



SunLong Biotech Co.,LTD
Tel: 0086-571- 56623320 Fax:0086-571- 56623318
E-mail:sales@sunlongbiotech.com
www.sunlongbiotech.com

[KD-Validated] Anti-Nuclear Mitotic Apparatus Protein 1 Rabbit Monoclonal Antibody

Cat No.: KD-10653

Aliases:

NUMA1; Nuclear Mitotic Apparatus Protein 1; NUMA; Nuclear Matrix Protein-22; SP-H Antigen; NMP-22; Centrophilin Stabilizes Mitotic Spindle In Mitotic Cells; Nuclear Mitotic Apparatus Protein; Structural Nuclear Protein; NuMA Protein; NMP22

Background:

UniProt Entry: [Q14980](#);NCBI Gene Entry: [4926](#)

Application Information

Molecular Weight: Predicted, 238 kDa, observed, 248 kDa Clonality: Rabbit monoclonal antibody Clone ID: 24GB1290 Species Reactivity: Human, Mouse, Rat Applications Tested: Western Blotting (WB), Flow Cytometry (FCM)

Immunogen

A synthesized peptide derived from human NUMA1

Isotype

Rabbit IgG

Storage Buffer

Supplied in PBS (pH 7.4) containing 50% glycerol, and 0.02% sodium azide.

Storage

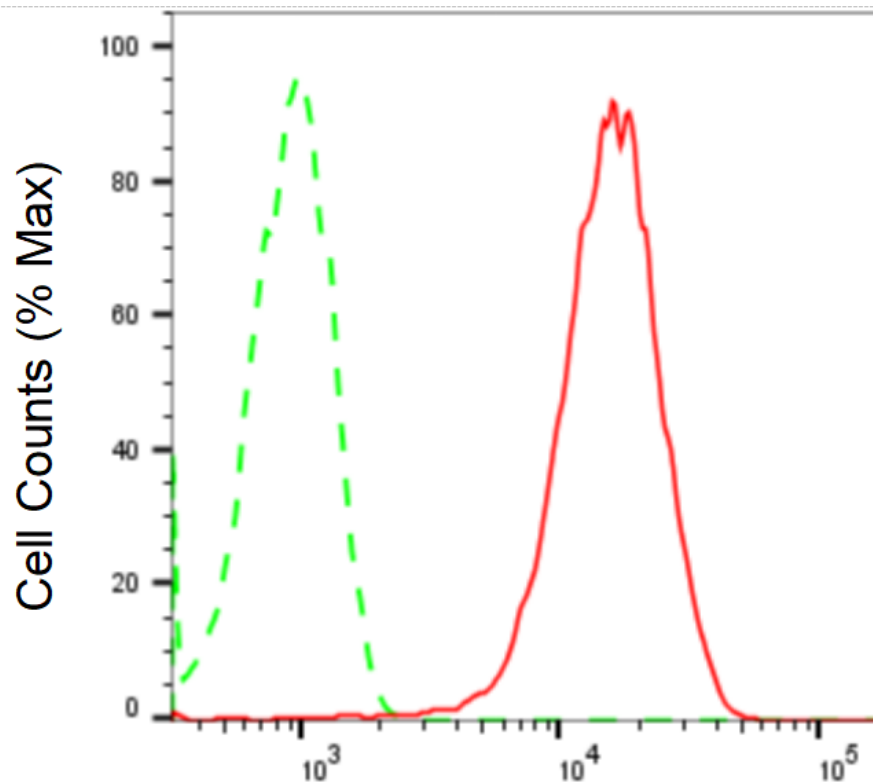
Store at -20 °C for one year.

Recommended Dilutions

Western Blotting (WB): 1:1,000-1:5,000 Flow Cytometry (FCM): 1:2,000

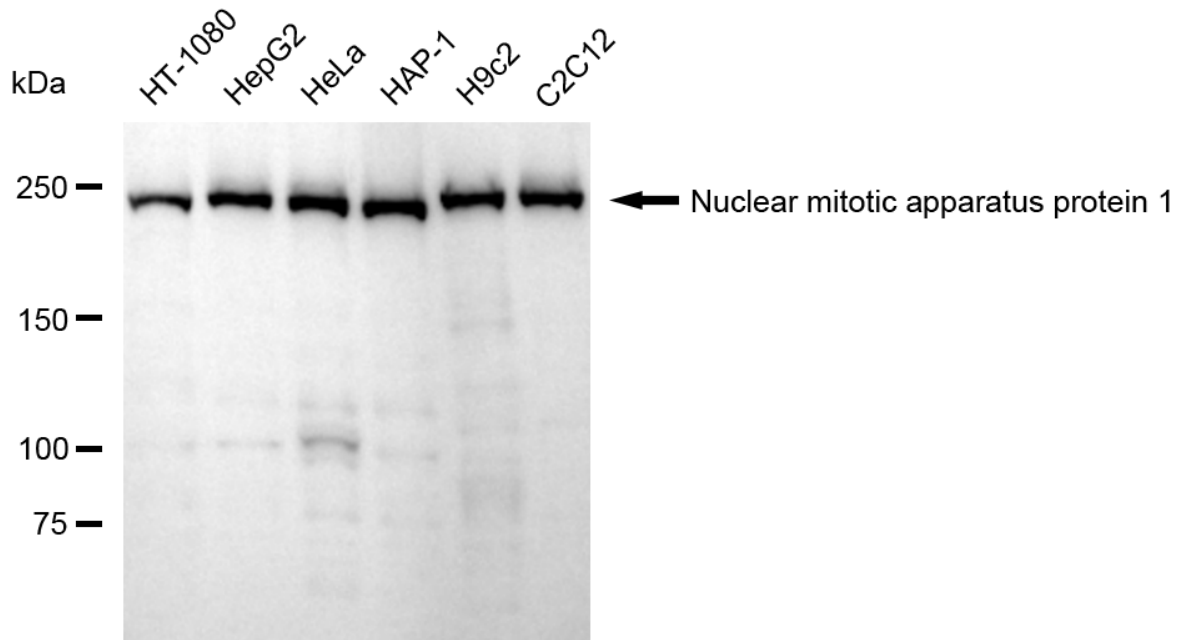
Protocols

For general and specific antibody protocols please visit our website. Read all instructions before using this product.



Nuclear mitotic apparatus protein 1-Alexa Fluor[®]
647

Flow cytometric analysis of Nuclear mitotic apparatus protein 1 expression in HepG2 cells using anti-Nuclear mitotic apparatus protein 1 antibody 1:2,000. Green, isotype control; red, Nuclear mitotic apparatus protein 1.



Western blotting analysis using anti-Nuclear mitotic apparatus protein 1 antibody 1:5,000 and HRP-conjugated goat anti-rabbit secondary antibody 1:20,000 respectively. Image was developed using NaQ™ ECL Substrate Kit 1:5,000 and HRP-conjugated goat anti-rabbit secondary antibody 1:20,000 respectively. Image was developed using NaQ™ ECL Substrate Kit .