



SunLong Biotech Co.,LTD  
Tel: 0086-571- 56623320 Fax:0086-571- 56623318  
E-mail:sales@sunlongbiotech.com  
www.sunlongbiotech.com

## **[KD-Validated] Anti-NSDHL Rabbit Monoclonal Antibody**

Cat No.: KD-10651

### **Aliases:**

NAD(P) Dependent Steroid Dehydrogenase-Like; SDR31E1; XAP104; H105e3; Sterol-4-Alpha-Carboxylate 3-Dehydrogenase, Decarboxylating; Short Chain Dehydrogenase/Reductase Family 31E, Member 1; Protein H105e3; EC 1.1.1.170; NAD(P) Dependent Steroid Dehydrogenase-Like Protein Transcript; Epididymis Secretory Sperm Binding Protein; H105E3

### **Background:**

UniProt Entry: [Q15738](#);NCBI Gene Entry: [50814](#)

### **Application Information**

Molecular Weight: Predicted, 42 kDa, observed, 38 kDa Clonality: Rabbit monoclonal antibody Clone ID: 24GB510 Species Reactivity: Human, Mouse, Rat Applications Tested: Western Blotting (WB), Flow Cytometry (FCM), Immunocytochemistry (IC)

### **Immunogen**

A synthesized peptide derived from human NSDHL

### **Isotype**

Rabbit IgG

### **Storage Buffer**

Supplied in PBS (pH 7.4) containing 50% glycerol, and 0.02% sodium azide.

#### Storage

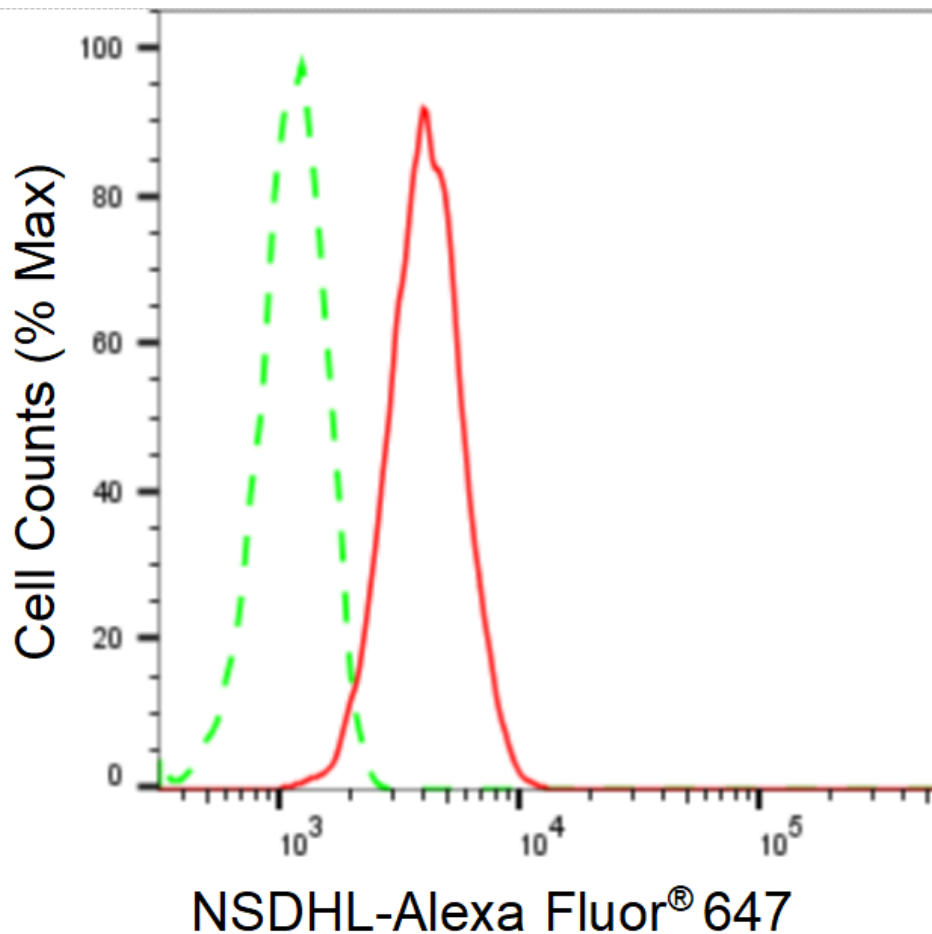
Store at -20 °C for one year.

#### Recommended Dilutions

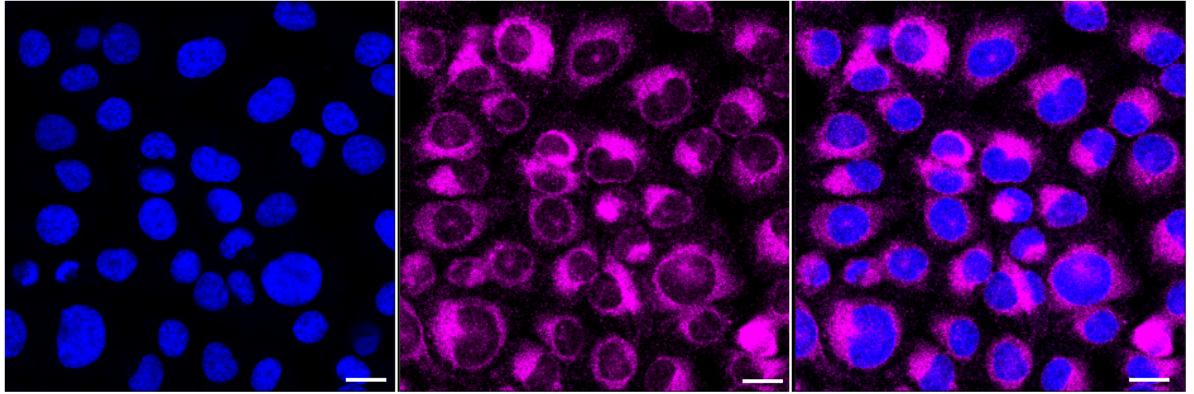
Western Blotting (WB): 1:1,000-1:5,000 Flow Cytometry (FCM): 1:2,000  
Immunocytochemistry (IC): 1:1,000

#### Protocols

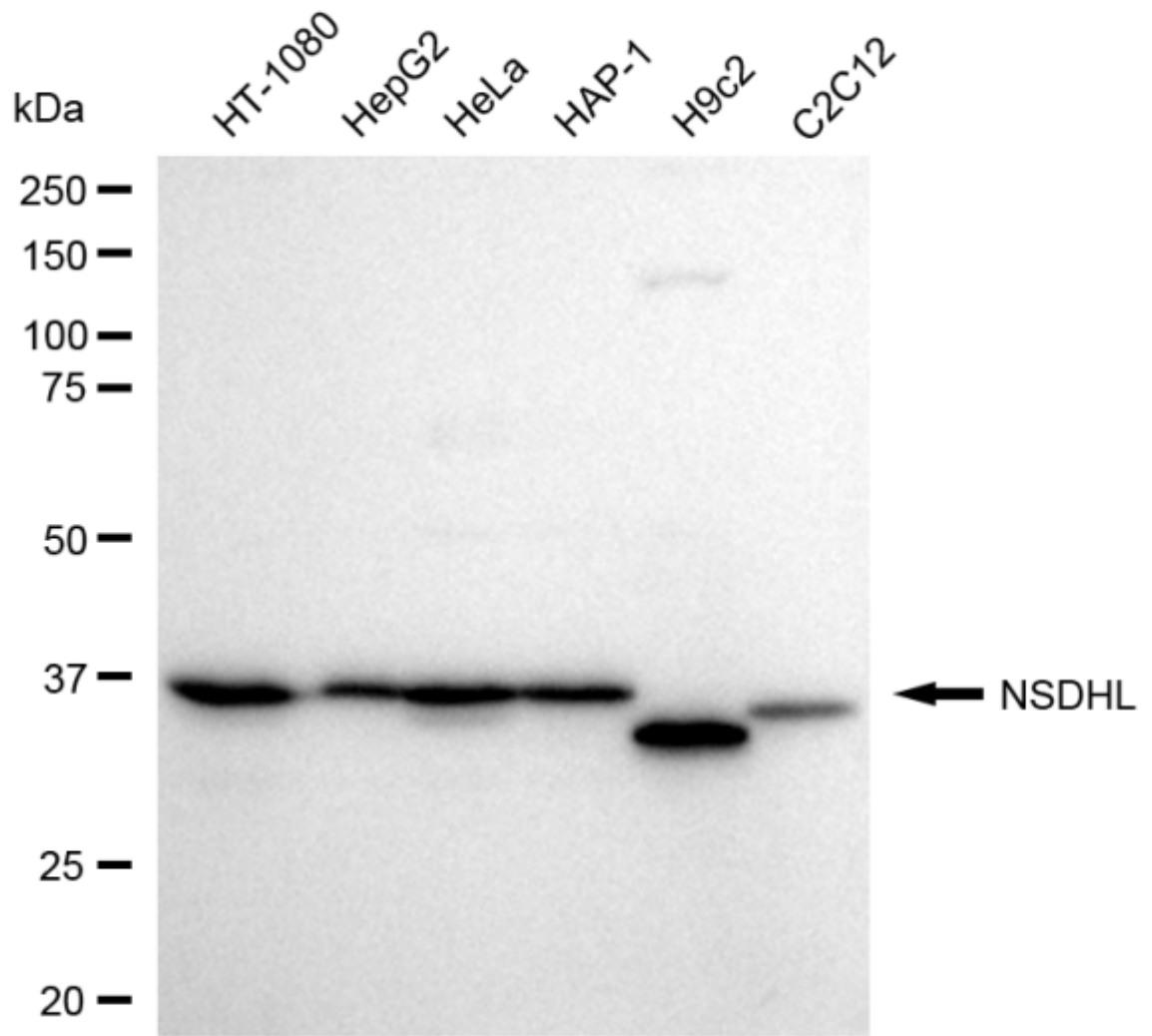
For general and specific antibody protocols please visit our website. Read all instructions before using this product.



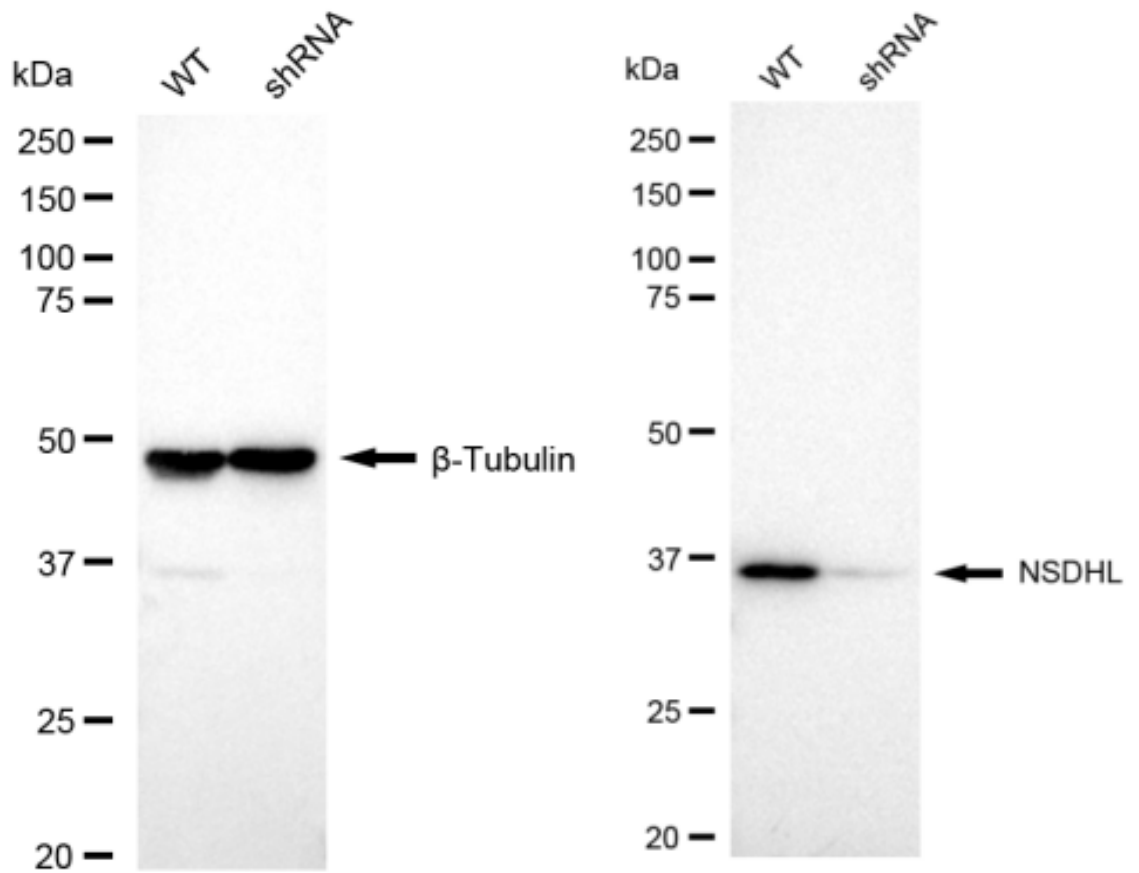
Flow cytometric analysis of NSDHL expression in HT-1080 cells using anti-NSDHL antibody 1:2,000. Green, isotype control; red, NSDHL.



Immunocytochemical staining of HT-1080 cells with anti-NSDHL antibody 1:1,000. Nuclei were stained blue with DAPI; NSDHL was stained magenta with Alexa Fluor® 647. Images were taken using Leica stellaris 5. Protein abundance based on laser Intensity and smart gain: Medium. Scale bar: 20  $\mu$ m.



Western blotting analysis using anti-NSDHL antibody 1:5,000 and HRP-conjugated goat anti-rabbit secondary antibody 1:20,000 respectively. Image was developed using FeQ™ ECL Substrate Kit .



Western blotting analysis using anti-NSDHL antibody 1:5,000 and HRP-conjugated goat anti-rabbit secondary antibody 1:20,000 respectively. Image was developed using NaQ™ ECL Substrate Kit .