



SunLong Biotech Co.,LTD
Tel: 0086-571- 56623320 Fax:0086-571- 56623318
E-mail:sales@sunlongbiotech.com
www.sunlongbiotech.com

[KD-Validated] Anti-NR2C2 Rabbit Rabbit Monoclonal Antibody

Cat No.: KD-10648

Aliases:

Nuclear Receptor Subfamily 2 Group C Member 2; TAK1; TR4; Orphan Nuclear Receptor TAK1; Orphan Nuclear Receptor TR4; TR2R1; HTAK1; Nuclear Receptor Subfamily 2, Group C, Member 2; Testicular Nuclear Receptor 4; Nuclear Hormone Receptor TR4; Testicular Receptor 4; Orphan Receptor TR4

Background:

UniProt Entry: [P49116](#);NCBI Gene Entry: [7182](#)

Application Information

Molecular Weight: Predicted, 65 kDa, observed, 65 kDa Clonality: Rabbit monoclonal antibody Clone ID: 24GB730 Species Reactivity: Human, Mouse, Rat Applications Tested: Western Blotting (WB), Flow Cytometry (FCM), Immunocytochemistry (IC)

Immunogen

A synthesized peptide derived from human NR2C2 / TR4

Isotype

Rabbit IgG

Storage Buffer

Supplied in PBS (pH 7.4) containing 50% glycerol, and 0.02% sodium azide.

Storage

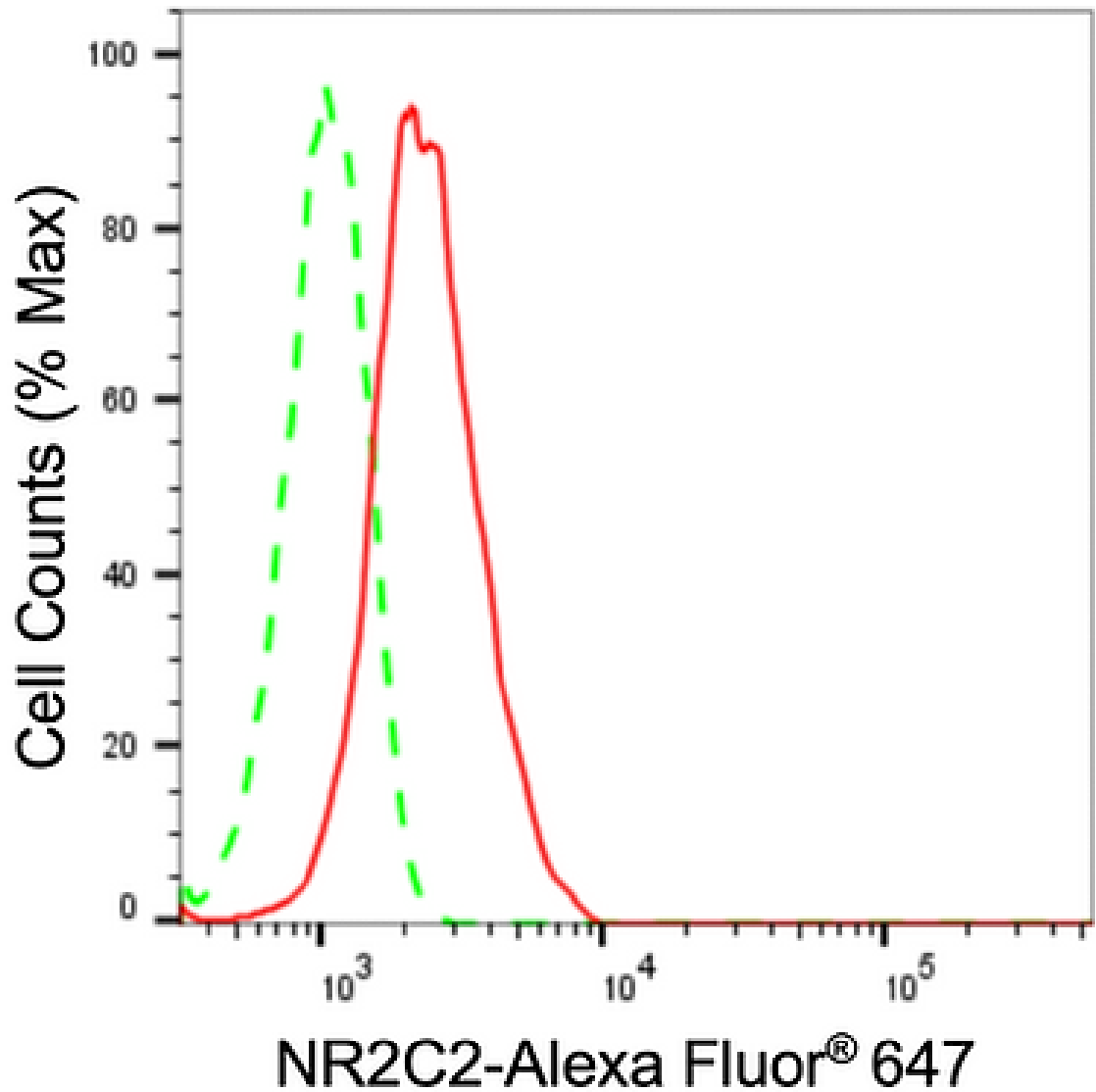
Store at -20 °C for one year.

Recommended Dilutions

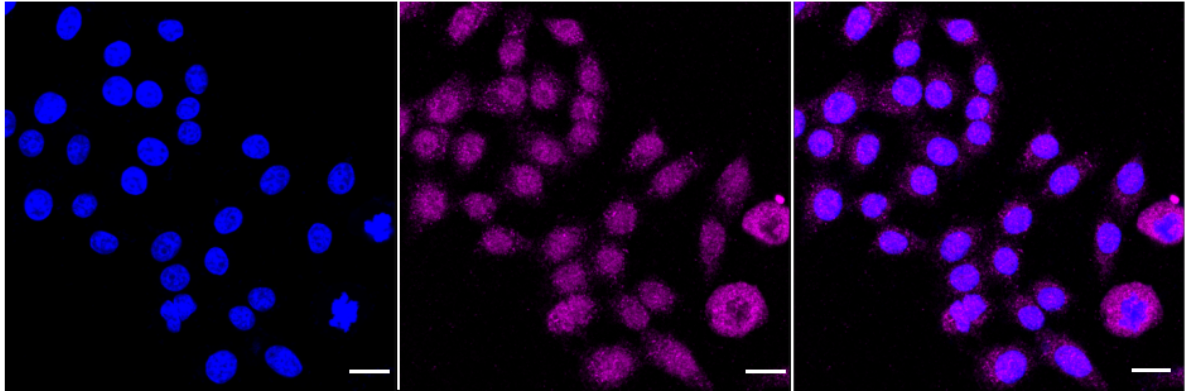
Western Blotting (WB): 1:1,000-1:5,000 Flow Cytometry (FCM): 1:2,000
Immunocytochemistry (IC): 1:1,000

Protocols

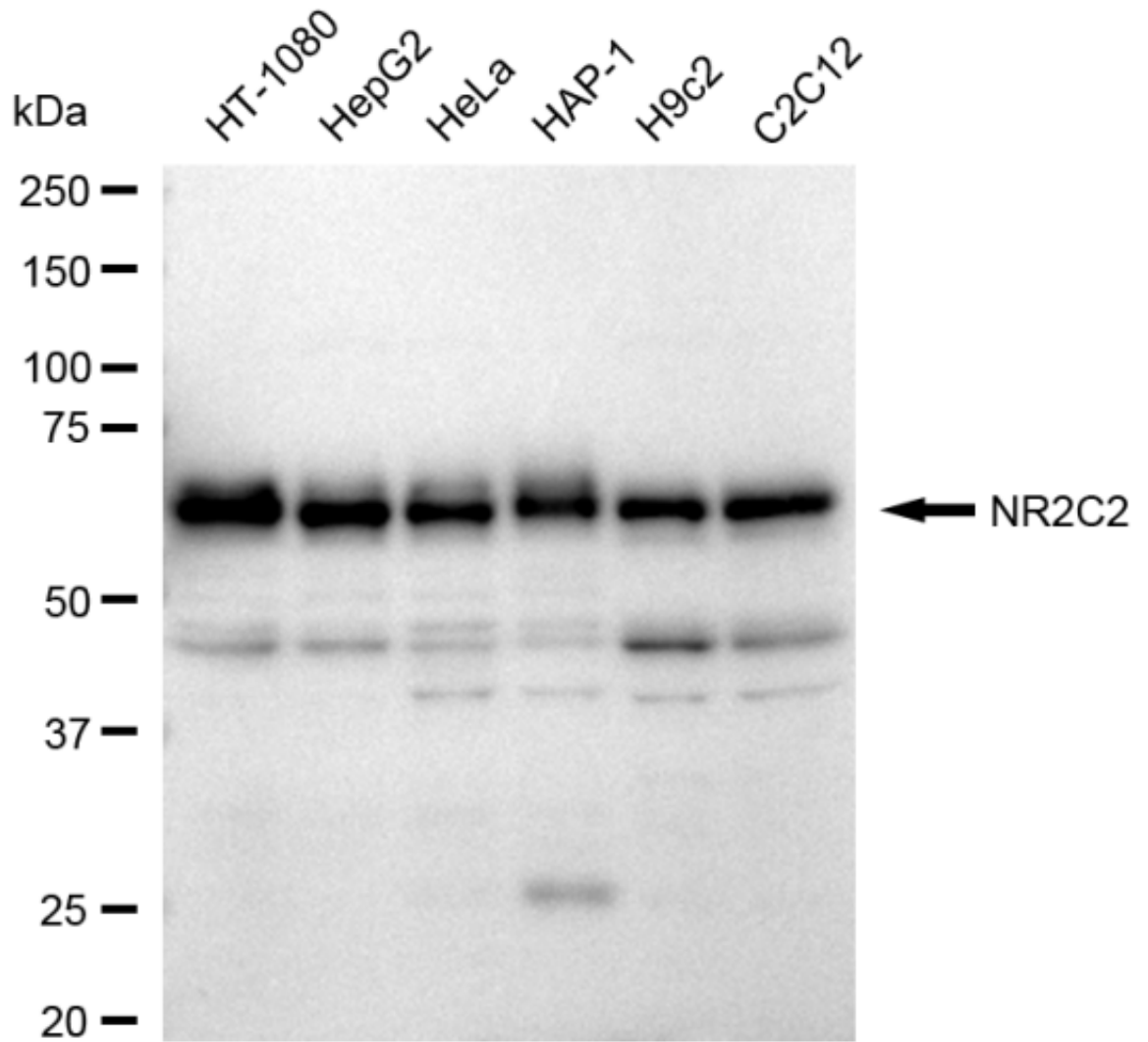
For general and specific antibody protocols please visit our website. Read all instructions before using this product.



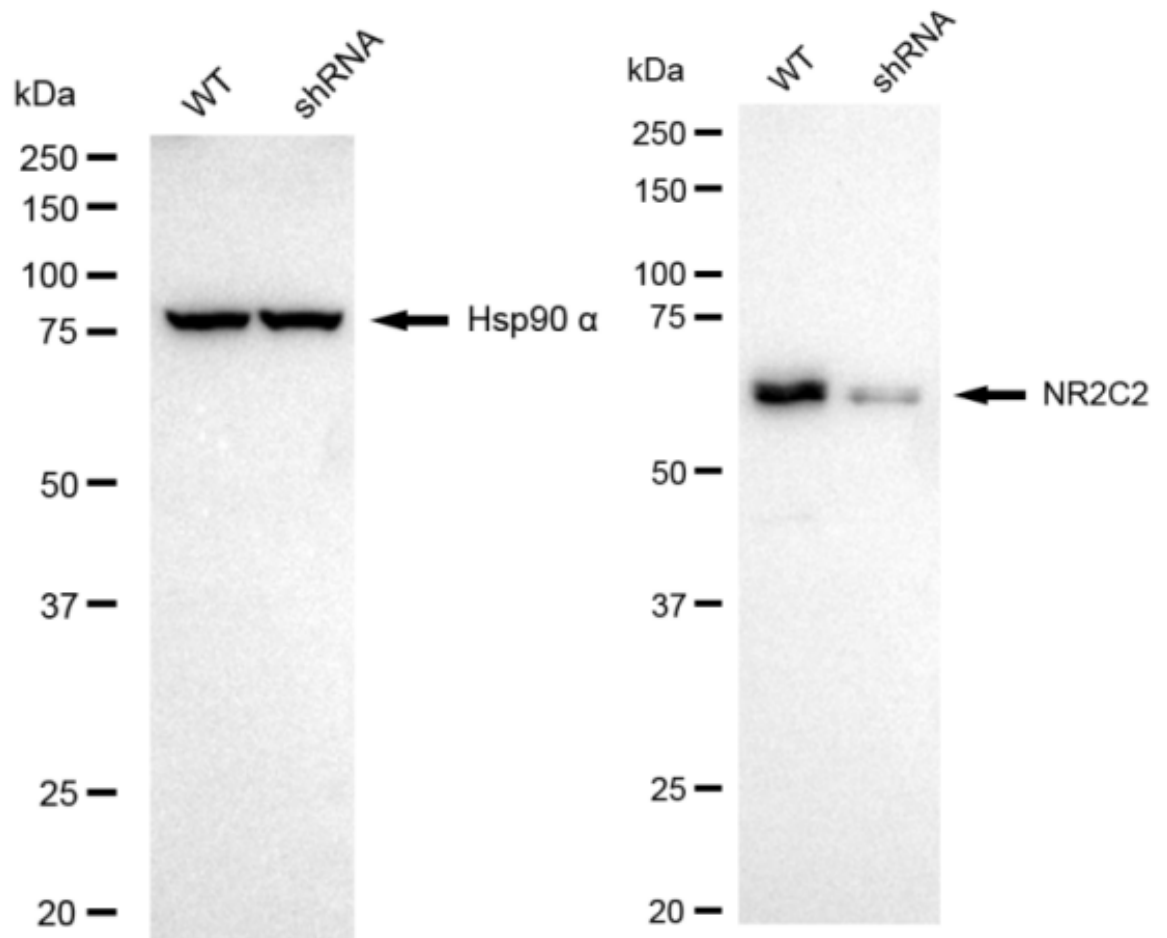
Flow cytometric analysis of NR2C2 expression in HepG2 cells using NR2C2 antibody 1:2,000. Green, isotype control; red, NR2C2.



Immunocytochemical staining of HepG2 cells with anti-NR2C2 antibody 1:1,000. Nuclei were stained blue with DAPI; NR2C2 was stained magenta with Alexa Fluor® 647. Images were taken using Leica stellaris 5. Protein abundance based on laser Intensity and smart gain: Medium. Scale bar: 20 μ m.



Western blotting analysis using anti-NR2C2 antibody 1:5,000 and HRP-conjugated goat anti-rabbit secondary antibody 1:20,000 respectively. Image was developed using FeQ™ ECL Substrate Kit .



Western blotting analysis using anti-NR2C2 antibody 1:5,000 and HRP-conjugated goat anti-rabbit secondary antibody 1:20,000 respectively. Image was developed using NaQ™ ECL Substrate Kit .