



SunLong Biotech Co.,LTD  
Tel: 0086-571- 56623320 Fax:0086-571- 56623318  
E-mail:sales@sunlongbiotech.com  
www.sunlongbiotech.com

## **[KD-Validated] Anti-NME1 Rabbit Monoclonal Antibody**

Cat No.: KD-10645

### **Aliases:**

NME1; NME/NM23 Nucleoside Diphosphate Kinase 1; NM23-H1; NDPKA; NM23; Non-Metastatic Cells 1, Protein (NM23A) Expressed In; Tumor Metastatic Process-Associated Protein; Metastasis Inhibition Factor Nm23; Nucleoside Diphosphate Kinase A; Granzyme A-Activated DNase; NDP Kinase A; EC 2.7.4.6; GAAD; Epididymis Secretory Sperm Binding Protein; NDPK-A; NDK A; NDKA; AWD; NBS; NB

### **Background:**

UniProt Entry: [P15531](#);NCBI Gene Entry: [4830](#)

### **Application Information**

Molecular Weight: Predicted, 17 kDa, observed, 17 kDa Clonality: Rabbit monoclonal antibody Clone ID: 23GB2195 Species Reactivity: Human Applications Used: Western Blotting (WB), Flow Cytometry (FCM), Immunocytochemistry (IC)

### **Immunogen**

A synthesized peptide derived from human NM23A

### **Isotype**

Rabbit IgG

### **Storage Buffer**

Supplied in PBS (pH 7.4) containing 50% glycerol, and 0.02% sodium azide.

### Storage

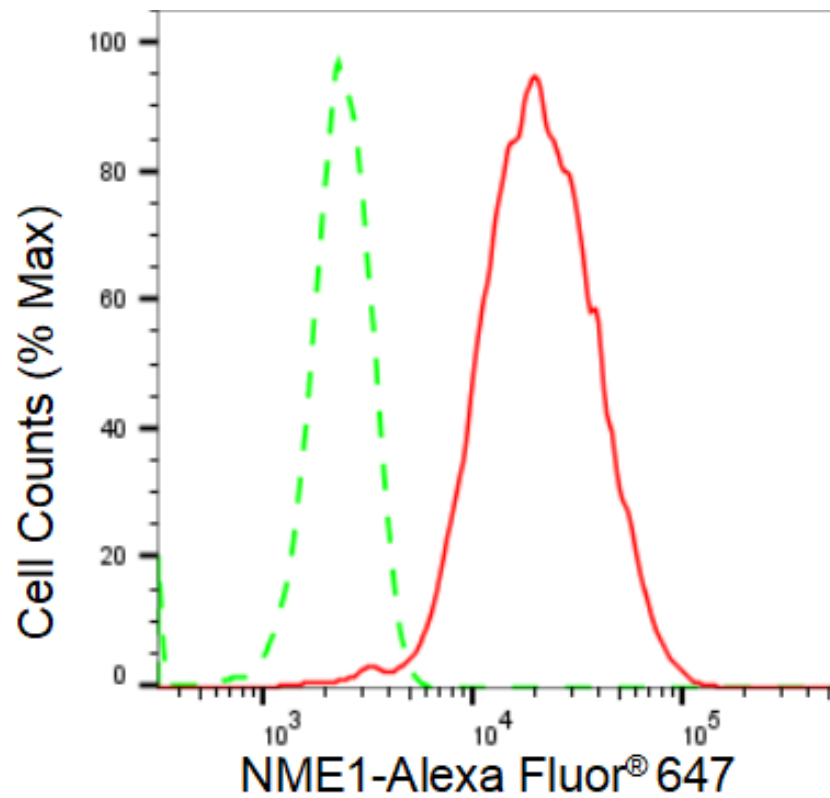
Store at -20 °C for one year.

### Recommended Dilutions

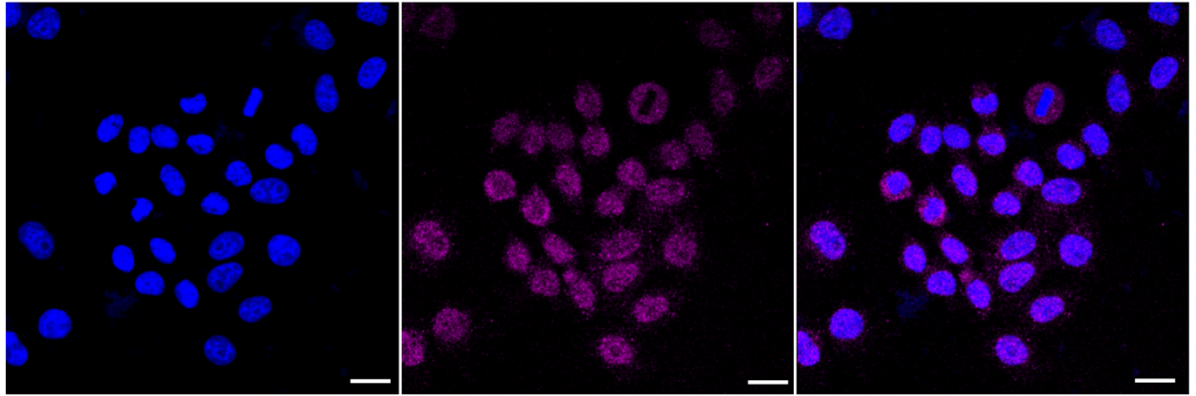
Western Blotting (WB): 1:1,000-1:5,000 Flow Cytometry (FCM): 1:2,000  
Immunocytochemistry (IC): 1:1,000

### Protocols

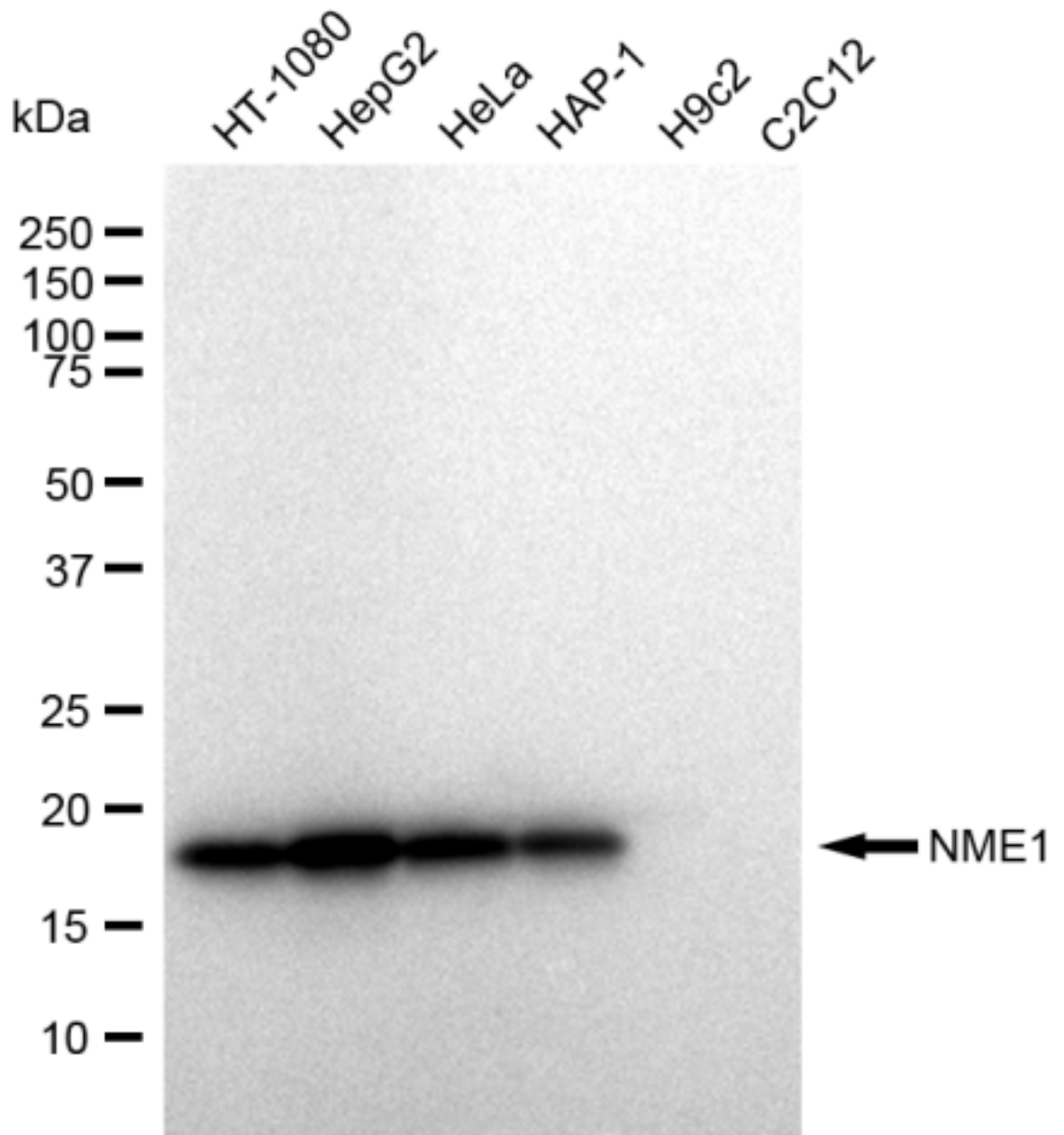
For general and specific antibody protocols please visit our website. Read all instructions before using this product.



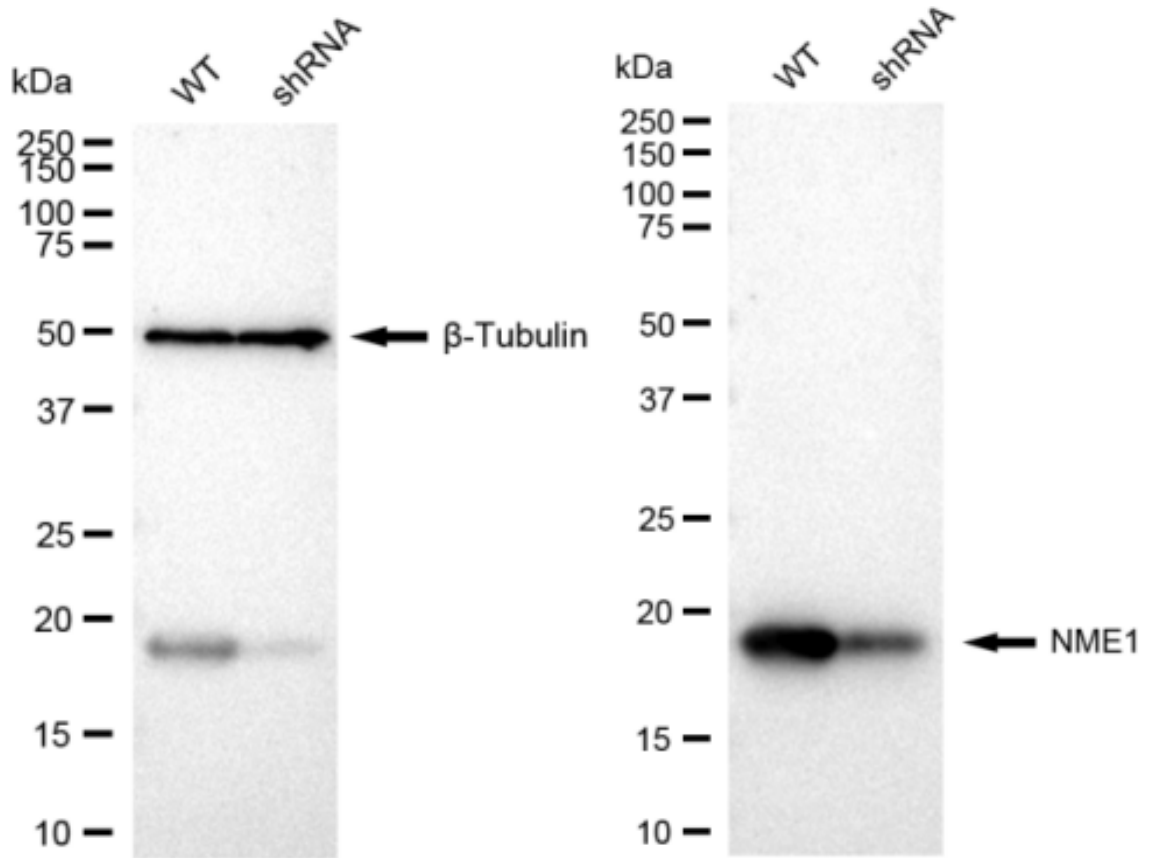
Flow cytometric analysis of NME1 expression in HepG2 cells using NME1 antibody 1:2,000. Green, isotype control; red, NME1.



Immunocytochemical staining of HepG2 cells with NME1 antibody 1:1,000. Nuclei were stained blue with DAPI; NME1 was stained magenta with Alexa Fluor® 647. Images were taken using Leica stellaris 5. Protein abundance based on laser Intensity and smart gain: Low. Scale bar: 20  $\mu\text{m}$ .



Western blotting analysis using anti-NME1 antibody 1:5,000 and HRP-conjugated goat anti-rabbit secondary antibody 1:20,000 respectively. Image was developed using FeQ™ ECL Substrate Kit .



Western blotting analysis using anti-NME1 antibody 1:5,000 and HRP-conjugated goat anti-rabbit secondary antibody 1:20,000 respectively. Image was developed using FeQ™ ECL Substrate Kit .