



SunLong Biotech Co.,LTD
Tel: 0086-571- 56623320 Fax:0086-571- 56623318
E-mail:sales@sunlongbiotech.com
www.sunlongbiotech.com

[KD-Validated] Anti-NME1 Rabbit Monoclonal Antibody

Cat No.: KD-10644

Aliases:

NME1; NME/NM23 Nucleoside Diphosphate Kinase 1; NM23-H1; NDPKA; NM23; Non-Metastatic Cells 1, Protein (NM23A) Expressed In; Tumor Metastatic Process-Associated Protein; Metastasis Inhibition Factor Nm23; Nucleoside Diphosphate Kinase A; Granzyme A-Activated DNase; NDP Kinase A; EC 2.7.4.6; GAAD; Epididymis Secretory Sperm Binding Protein; NDPK-A; NDK;NDKA; AWD; NBS; NB

Background:

UniProt Entry: [P15531](#);NCBI Gene Entry: [4830](#)

Application Information

Molecular Weight: Predicted, 17 kDa, observed, 17 kDa Clonality: Rabbit monoclonal antibody Clone ID: 23GB2180 Species Reactivity: Human Applications Used: Western Blotting (WB), Immunocytochemistry (IC)

Immunogen

A synthesized peptide derived from human NM23A

Isotype

Rabbit IgG

Storage Buffer

Supplied in PBS (pH 7.4) containing 50% glycerol, and 0.02% sodium azide.

Storage

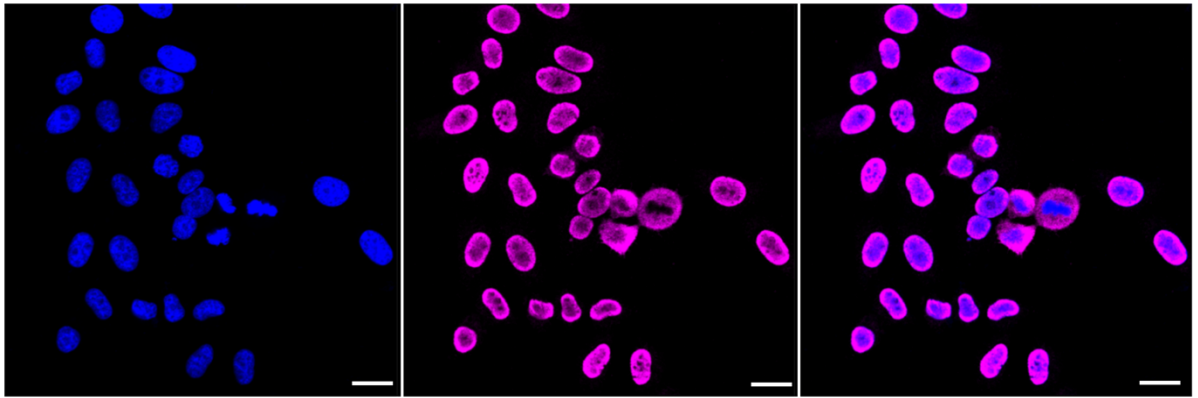
Store at -20 °C for one year.

Recommended Dilutions

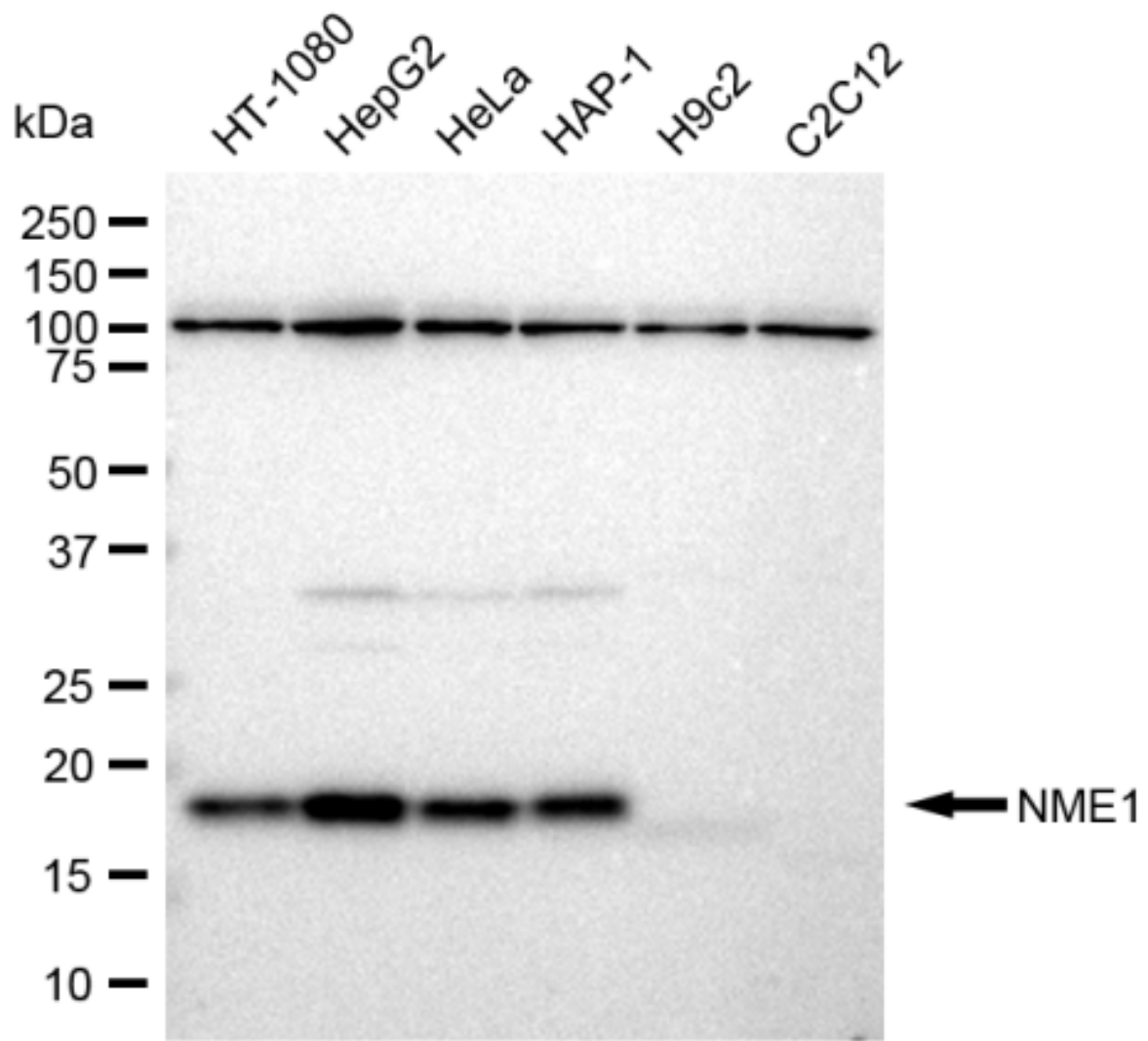
Western Blotting (WB): 1:1,000-1:5,000 Immunocytochemistry (IC): 1:1,000

Protocols

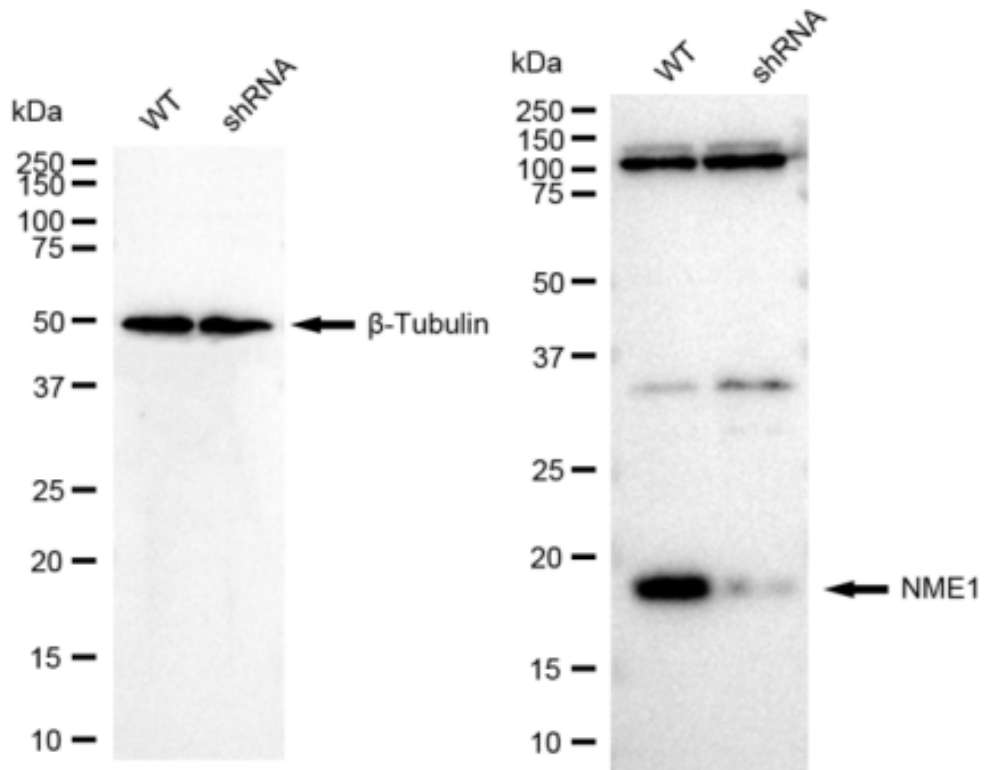
For general and specific antibody protocols please visit our website. Read all instructions before using this product.



Immunocytochemical staining of HepG2 cells with NME1 antibody 1:1,000. Nuclei were stained blue with DAPI; NME1 was stained magenta with Alexa Fluor® 647. Images were taken using Leica stellaris 5. Protein abundance based on laser Intensity and smart gain: Medium. Scale bar: 20 µm.



Western blotting analysis using anti-NME1 antibody 1:5,000 and HRP-conjugated goat anti-rabbit secondary antibody 1:20,000 respectively. Image was developed using FeQ™ ECL Substrate Kit .



Western blotting analysis using anti-NME1 antibody 1:5,000 and HRP-conjugated goat anti-rabbit secondary antibody 1:20,000 respectively. Image was developed using FeQ™ ECL Substrate Kit .