



SunLong Biotech Co.,LTD  
Tel: 0086-571- 56623320 Fax:0086-571- 56623318  
E-mail:sales@sunlongbiotech.com  
www.sunlongbiotech.com

## [KD-Validated] Anti-Nemo Like Kinase Rabbit Monoclonal Antibody

Cat No.: KD-10643

### Aliases:

Nemo Like Kinase; Serine/Threonine-Protein Kinase NLK; Nemo-Like Kinase; EC 2.7.11.24; Protein LAK1; EC 2.7.11; LAK1

### Background:

UniProt Entry: [Q9UBE8](#);NCBI Gene Entry: [51701](#)

### Application Information

Molecular Weight: Predicted, 58 kDa, observed, 58 kDa Clonality: Rabbit monoclonal antibody Clone ID: 24GB585 Species Reactivity: Human Applications Used: Western Blotting (WB), Flow Cytometry (FCM), Immunocytochemistry (IC)

### Immunogen

A synthesized peptide derived from human NLK

### Isotype

Rabbit IgG

### Storage Buffer

Supplied in PBS (pH 7.4) containing 50% glycerol, and 0.02% sodium azide.

### Storage

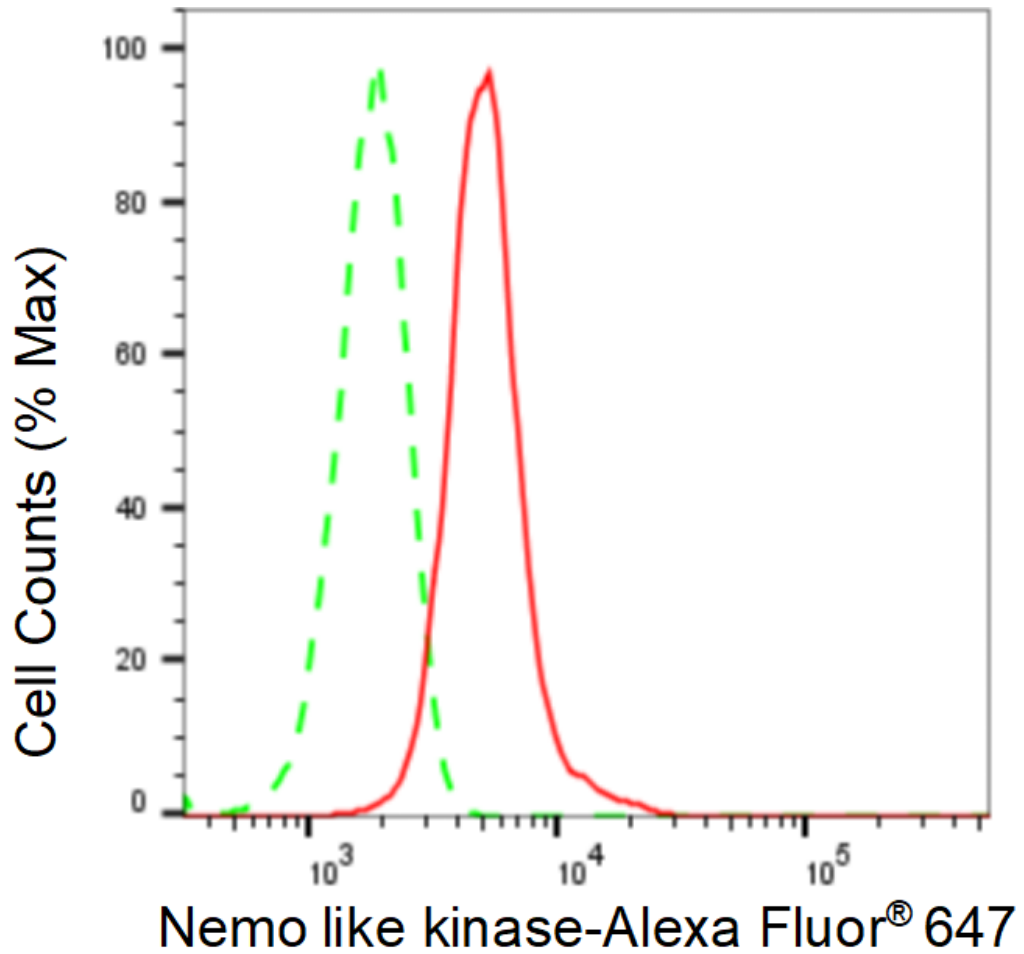
Store at -20 °C for one year.

#### Recommended Dilutions

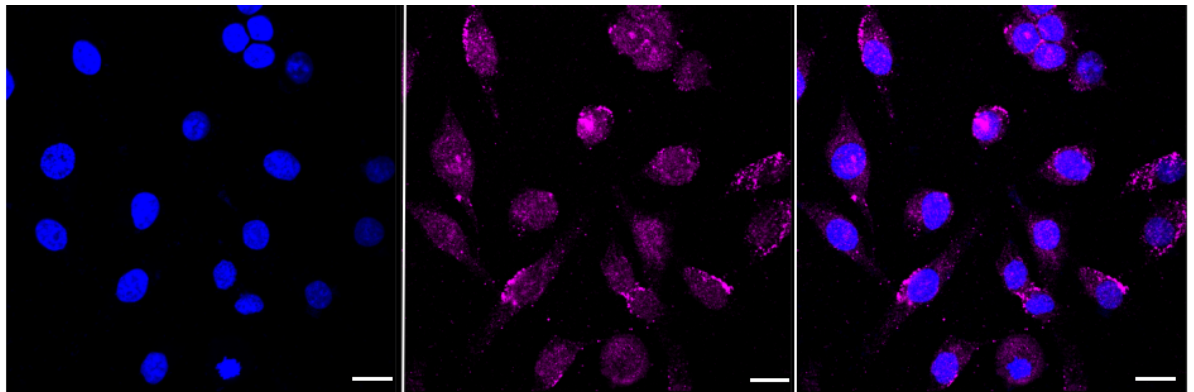
Western Blotting (WB): 1:1,000-1:5,000 Flow Cytometry (FCM): 1:2,000  
Immunocytochemistry (IC): 1:1,000

#### Protocols

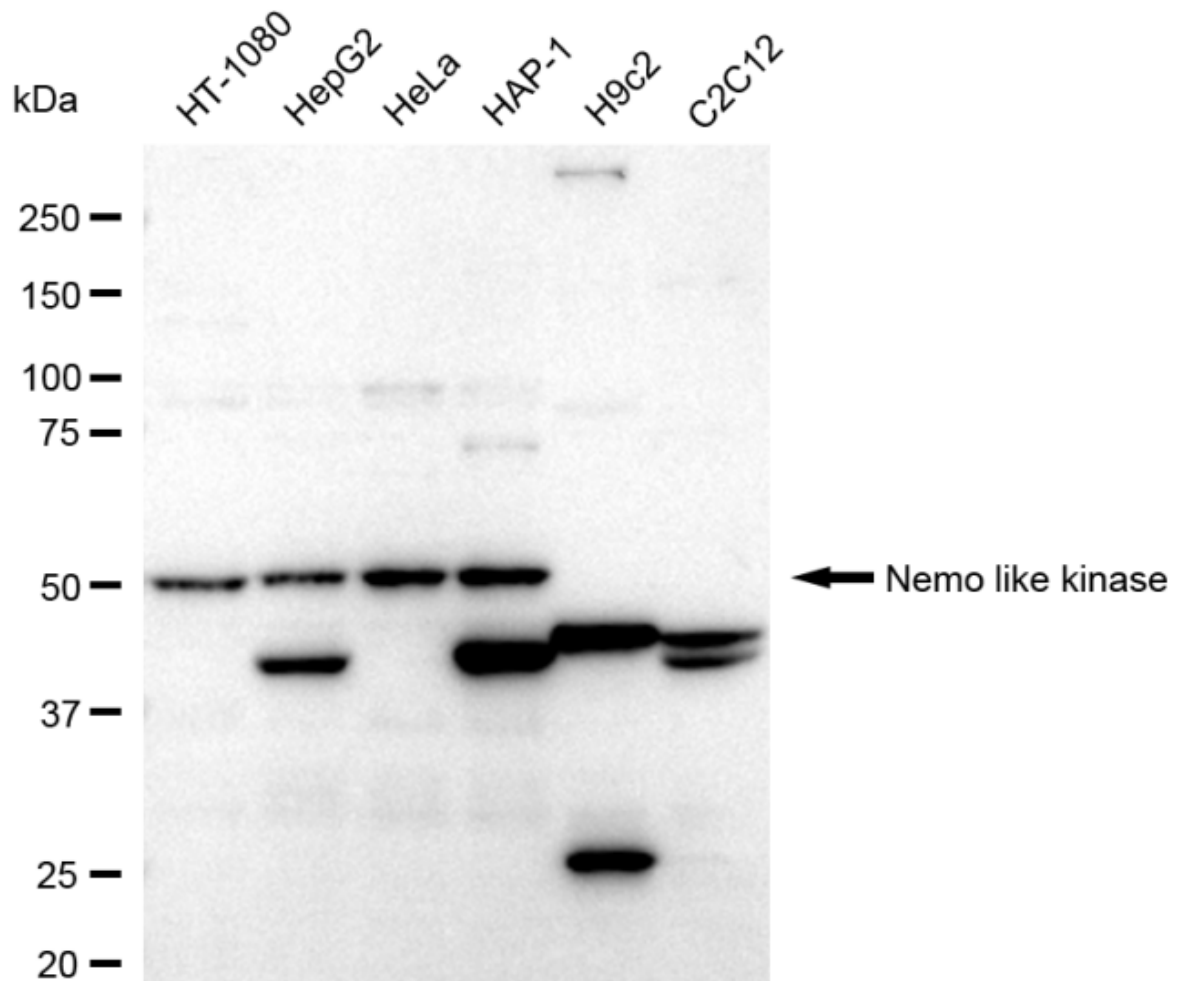
For general and specific antibody protocols please visit our website. Read all instructions before using this product.



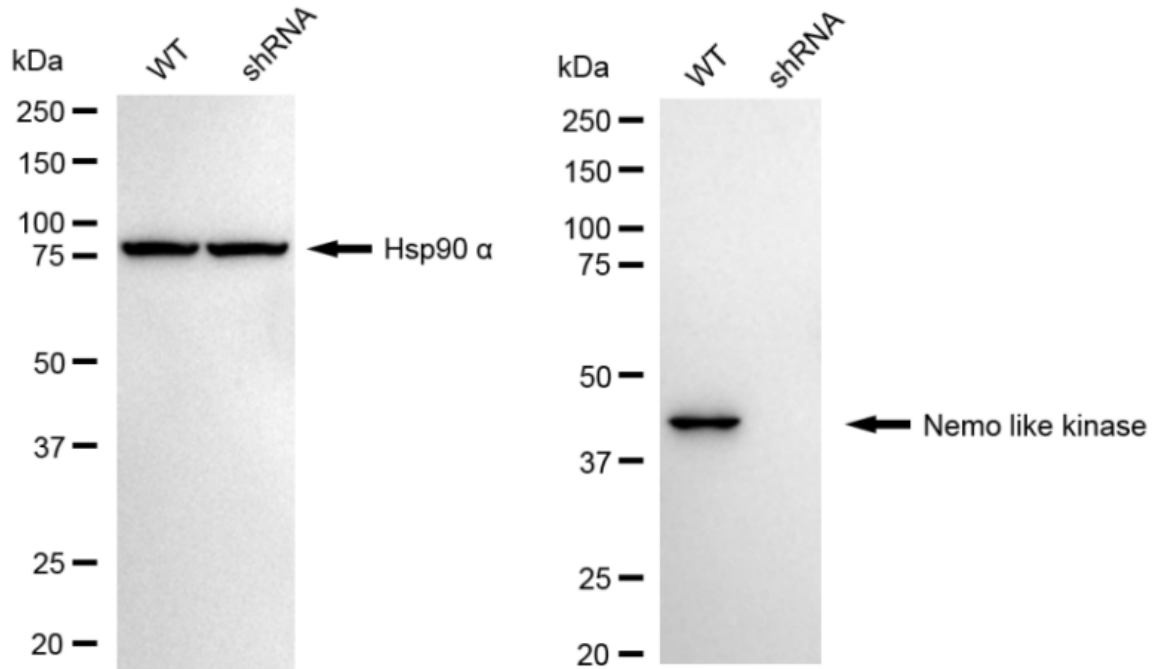
Flow cytometric analysis of Nemo like kinase expression in HeLa cells using Nemo like kinase antibody 1:2,000. Green, isotype control; red, Nemo like kinase.



Immunocytochemical staining of HeLa cells with anti-Nemo like kinase antibody 1:1,000. Nuclei were stained blue with DAPI; Nemo like kinase was stained magenta with Alexa Fluor® 647. Images were taken using Leica stellaris 5. Protein abundance based on laser Intensity and smart gain: Medium. Scale bar: 20  $\mu$ m.



Western blotting analysis using anti-Nemo like kinase antibody 1:5,000 and HRP-conjugated goat anti-rabbit secondary antibody 1:20,000 respectively. Image was developed using FeQ™ ECL Substrate Kit .



Western blotting analysis using anti-Nemo like kinase antibody 1:5,000 and HRP-conjugated goat anti-rabbit secondary antibody 1:20,000 respectively. Image was developed using NaQ™ ECL Substrate Kit .