



SunLong Biotech Co.,LTD
Tel: 0086-571- 56623320 Fax:0086-571- 56623318
E-mail:sales@sunlongbiotech.com
www.sunlongbiotech.com

[KD-Validated] Anti-NK2 Homeobox 1 Rabbit Monoclonal Antibody

Cat No.: KD-10642

Aliases:

NKX2-1; NK2 Homeobox 1; TTF-1; TTF1; Thyroid Transcription Factor 1; NKX2A; TITF1; Thyroid-Specific Enhancer-Binding Protein; Homeobox Protein NK-2 Homolog A; Homeobox Protein Nkx-2.1; Thyroid Nuclear Factor 1; T/EBP; BCH; NK-2 Homolog A; Benign Chorea; NKX2.1; NMTC1; NK-2; TEBP; BHC

Background:

UniProt Entry: [P43699](#);NCBI Gene Entry: [7080](#)

Application Information

Molecular Weight: Predicted, 39 kDa, observed, 42 kDa Clonality: Rabbit monoclonal antibody Clone ID: 24GB5440 Species Reactivity: Human Applications Used: Western Blotting (WB), Flow Cytometry (FCM)

Immunogen

A synthesized peptide derived from human TTF1

Isotype

Rabbit IgG

Storage Buffer

Supplied in PBS (pH 7.4) containing 50% glycerol, and 0.02% sodium azide.

Storage

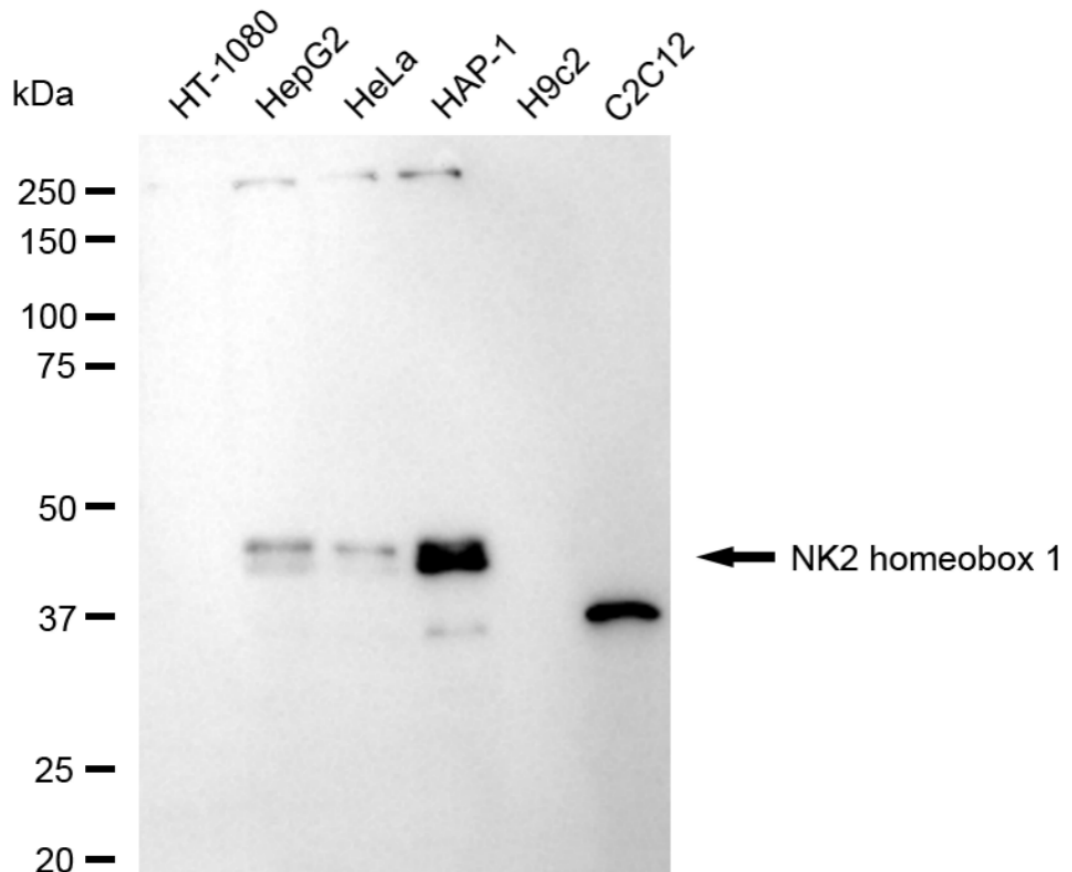
Store at -20 °C for one year.

Recommended Dilutions

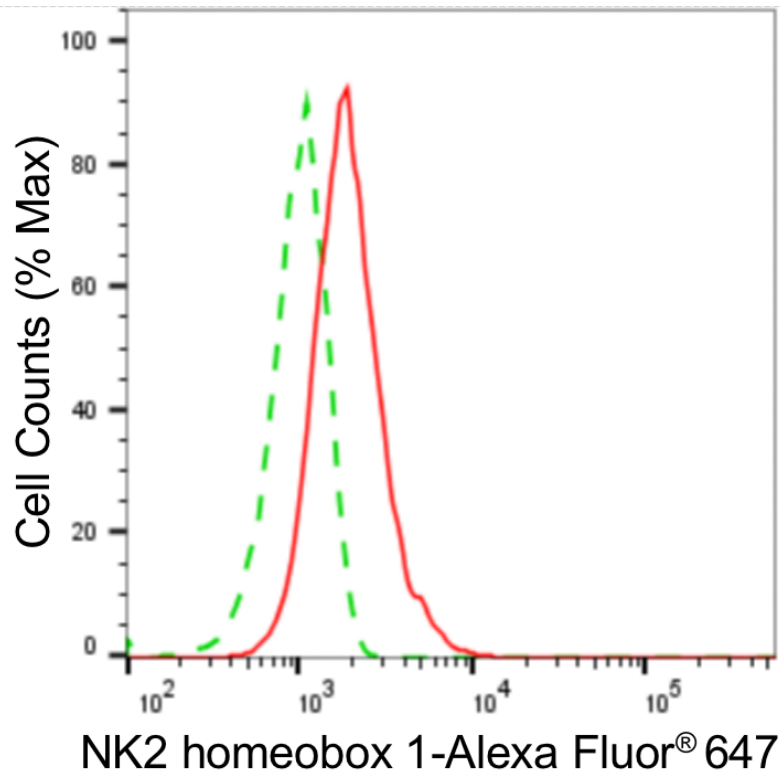
Western Blotting (WB): 1:1,000-1:5,000 Flow Cytometry (FCM): 1:2,000

Protocols

For general and specific antibody protocols please visit our website. Read all instructions before using this product.



Western blotting analysis using anti-NK2 homeobox 1 antibody 1:5,000 and HRP-conjugated goat anti-rabbit secondary antibody 1:20,000 respectively. Image was developed using NaQ™ ECL Substrate Kit 1:5,000 and HRP-conjugated goat anti-rabbit secondary antibody 1:20,000 respectively. Image was developed using FeQ™ ECL Substrate Kit .



Flow cytometric analysis of NK2 homeobox 1 expression in HAP-1 cells using anti-NK2 homeobox 1 antibody 1:2,000. Green, isotype control; red, NK2 homeobox 1.