



SunLong Biotech Co.,LTD
Tel: 0086-571- 56623320 Fax:0086-571- 56623318
E-mail:sales@sunlongbiotech.com
www.sunlongbiotech.com

[KD-Validated] Anti-NHERF1 Rabbit Rabbit Monoclonal Antibody

Cat No.: KD-10641

Aliases:

NHERF1; NHERF Family PDZ Scaffold Protein 1; NHERF-1; NHERF; EBP50; SLC9A3R1; NHE-RF; Solute Carrier Family 9, Subfamily A (NHE3, Cation Proton Antiporter 3), Member 3 Regulator 1; Na(+)/H(+) Exchange Regulatory Cofactor NHERF1; Ezrin-Radixin-Moesin-Binding Phosphoprotein 50; Regulatory Cofactor Of Na(+)/H(+) Exchanger; Na(+)/H(+) Exchange Regulatory Cofactor 1; SLC9A3 Regulator 1; Solute Carrier Family 9 (Sodium/Hydrogen Exchanger), Isoform 3 Regulatory Factor 1; Solute Carrier Family 9 (Sodium/Hydrogen Exchanger), Isoform 3 Regulator 1; Solute Carrier Family 9 (Sodium/Hydrogen Exchanger), Member 3 Regulator 1; Solute Carrier Family 9 Isoform A3 Regulatory Factor 1; Ezrin-Radixin-Moesin Binding Phosphoprotein-50; Sodium-Hydrogen Exchanger Regulatory Factor 1; Na+/H+ Exchange Regulatory Co-Factor; NPHLOP2

Background:

UniProt Entry: [O14745](#);NCBI Gene Entry: [9368](#)

Application Information

Molecular Weight: Predicted, 39 kDa, observed, 50 kDa Clonality: Rabbit monoclonal antibody Clone ID: 24GB1270 Spncies Reactivity: Human, Rat Applications Tested: Western Blotting (WB)

Immunogen

A synthesized peptide derived from human EBP50

Isotype

Rabbit IgG

Storage Buffer

Supplied in PBS (pH 7.4) containing 50% glycerol, and 0.02% sodium azide.

Storage

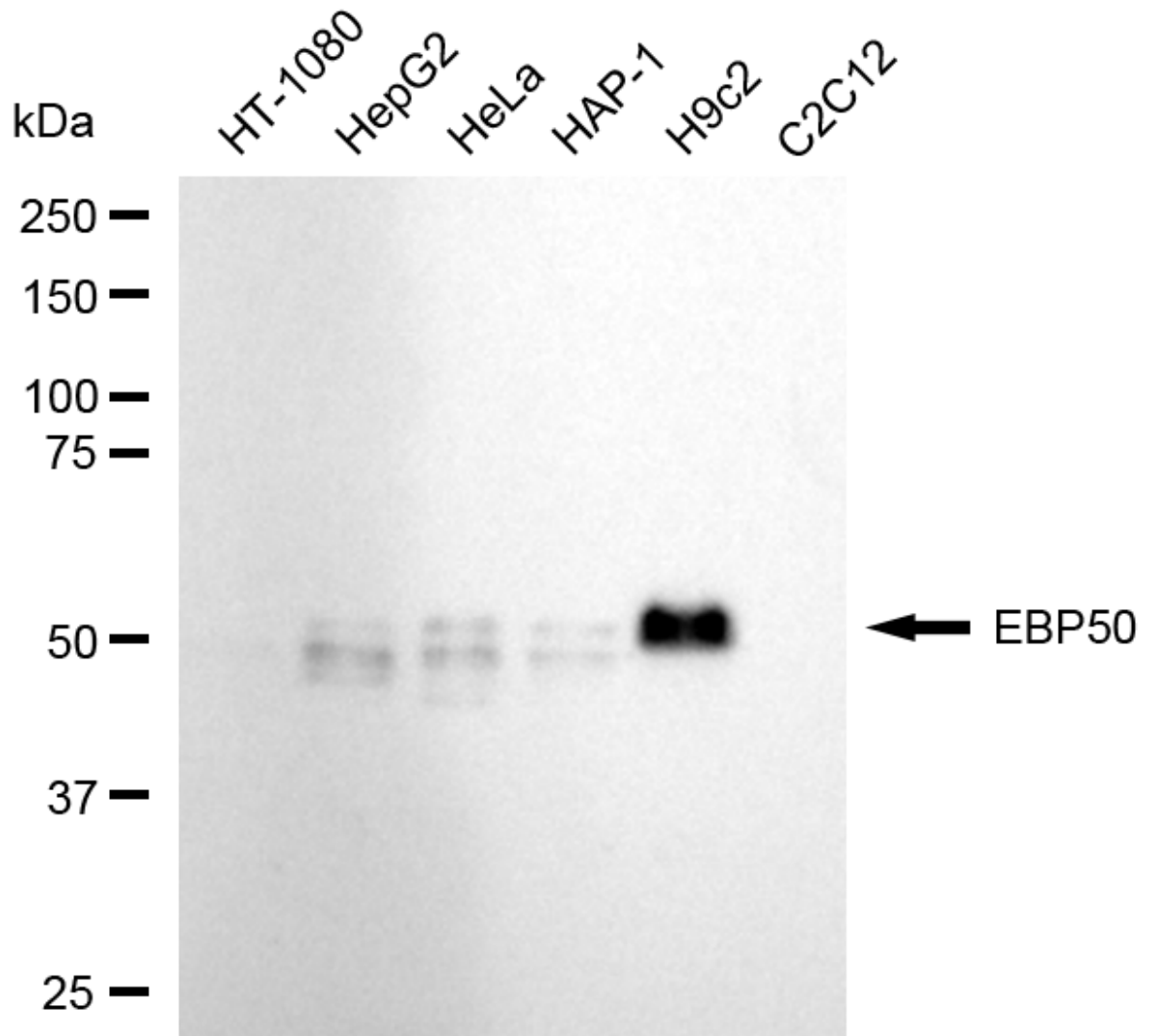
Store at -20 °C for one year.

Recommended Dilutions

Western Blotting (WB): 1:1,000-1:5,000

Protocols

For general and specific antibody protocols please visit our website. Read all instructions before using this product.



Western blotting analysis using anti-NHERF Family PDZ Scaffold Protein 1 antibody 1:5,000 and HRP-conjugated goat anti-rabbit secondary antibody 1:20,000 respectively. Image was developed using NaQ™ ECL Substrate Kit 1:5,000 and HRP-conjugated goat anti-rabbit secondary antibody 1:20,000 respectively. Image was developed using NaQ™ ECL Substrate Kit .