



SunLong Biotech Co.,LTD
Tel: 0086-571- 56623320 Fax:0086-571- 56623318
E-mail:sales@sunlongbiotech.com
www.sunlongbiotech.com

[KD-Validated] Anti-NFKB1 Rabbit Monoclonal Antibody

Cat No.: KD-10638

Aliases:

NFKB1; Nuclear Factor Kappa B Subunit 1; Nuclear Factor Of Kappa Light Polypeptide Gene Enhancer In B-Cells 1; Nuclear Factor NF-Kappa-B P105 Subunit; NFKB-P50; NF-KB1; KBF1; DNA-Binding Factor KBF1; NF-KappaB; NFkappaB; EBP-1; P105; P50; Nuclear Factor Kappa-B DNA Binding Subunit; Nuclear Factor NF-Kappa-B P50 Subunit; NF-Kappabeta; NF-Kappa-B1; NFKB-P105; NF-KAPPAB; NFKAPPAB; CVID12; NF-KB

Background:

UniProt Entry: [P19838](#);NCBI Gene Entry: [4790](#)

Application Information

Molecular Weight: Predicted, 105 kDa, observed, 50,105 kDa Clonality: Rabbit monoclonal antibody Clone ID: 23GB2710 Species Reactivity: Human, Mouse, Rat Applications Tested: Western Blotting (WB), Flow Cytometry (FCM), Immunocytochemistry (IC)

Immunogen

A synthesized peptide derived from human NF- κ B (p105/p50)

Isotype

Rabbit IgG

Storage Buffer

Supplied in PBS (pH 7.4) containing 50% glycerol, and 0.02% sodium azide.

Storage

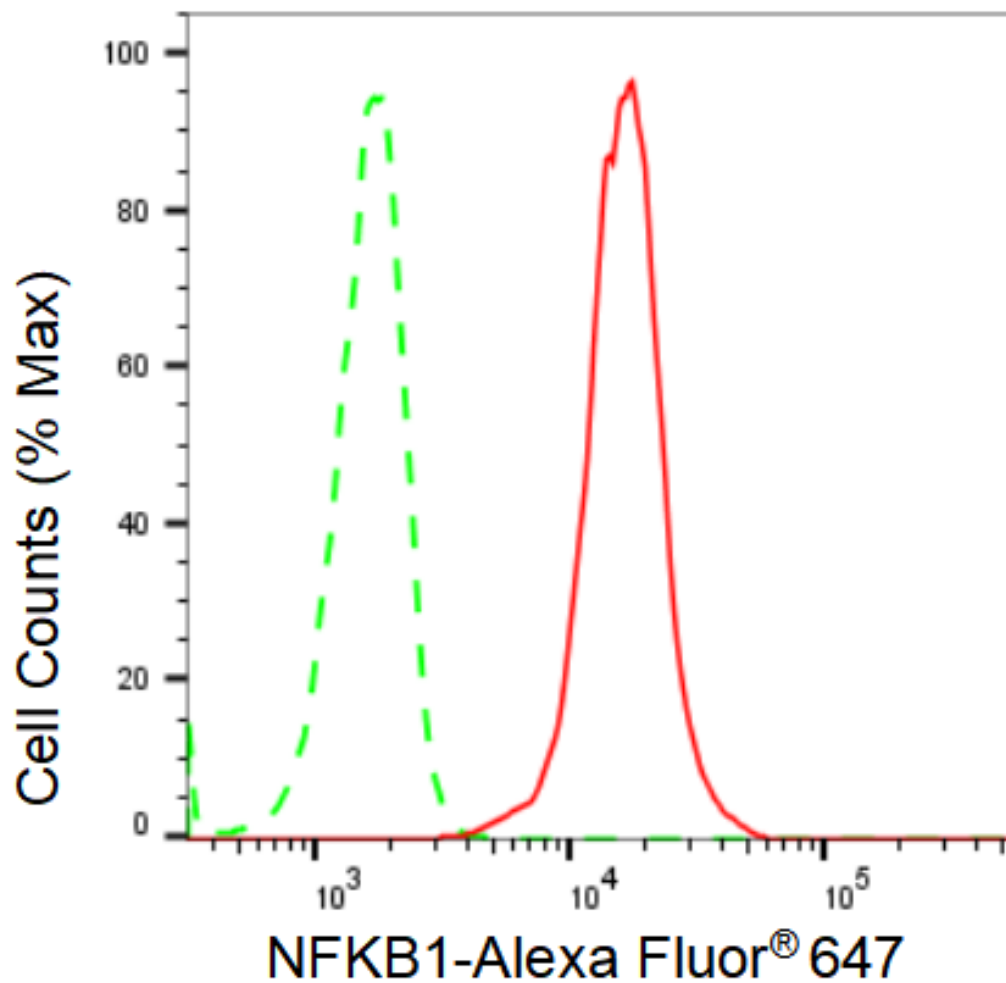
Store at -20 °C for one year.

Recommended Dilutions

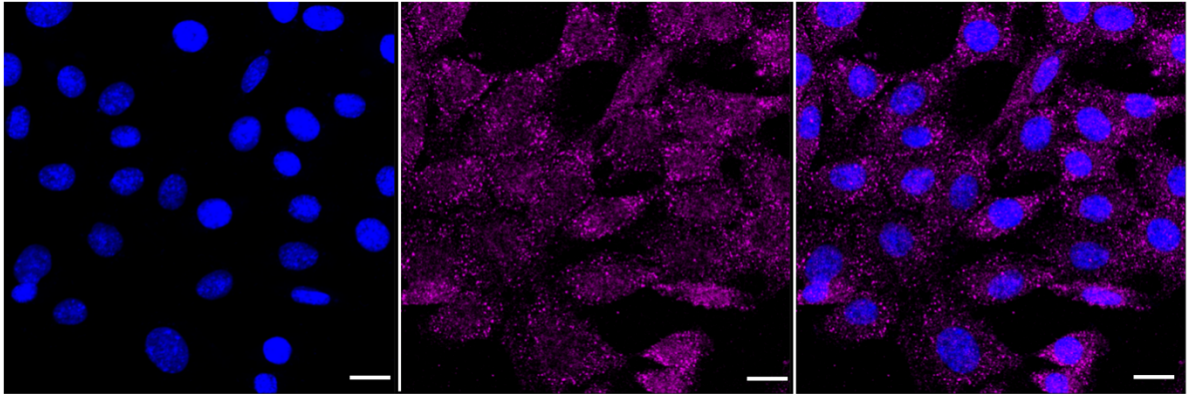
Western Blotting (WB): 1:1,000-1:5,000 Flow Cytometry (FCM): 1:2,000
Immunocytochemistry (IC): 1:1,000

Protocols

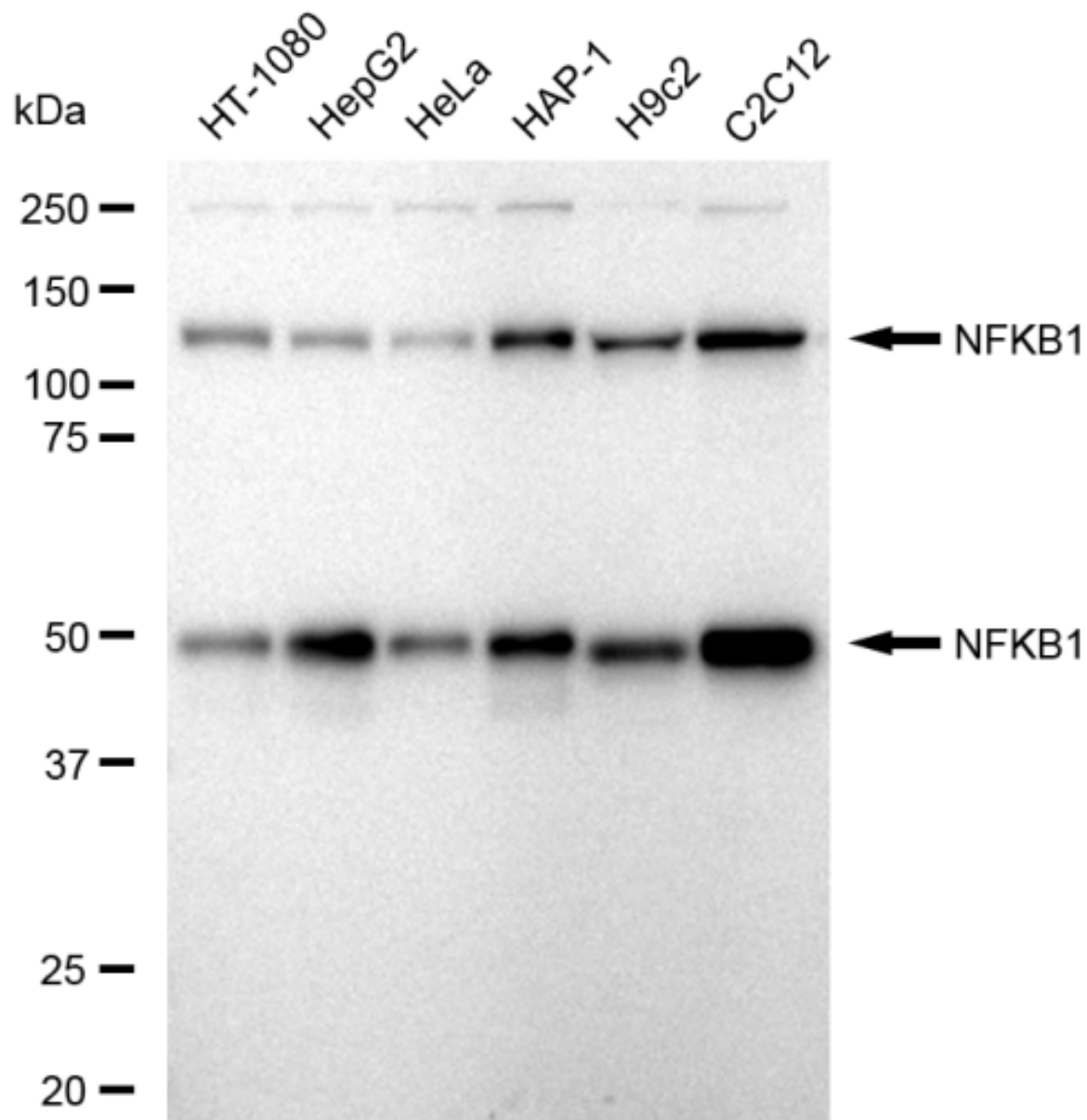
For general and specific antibody protocols please visit our website. Read all instructions before using this product.



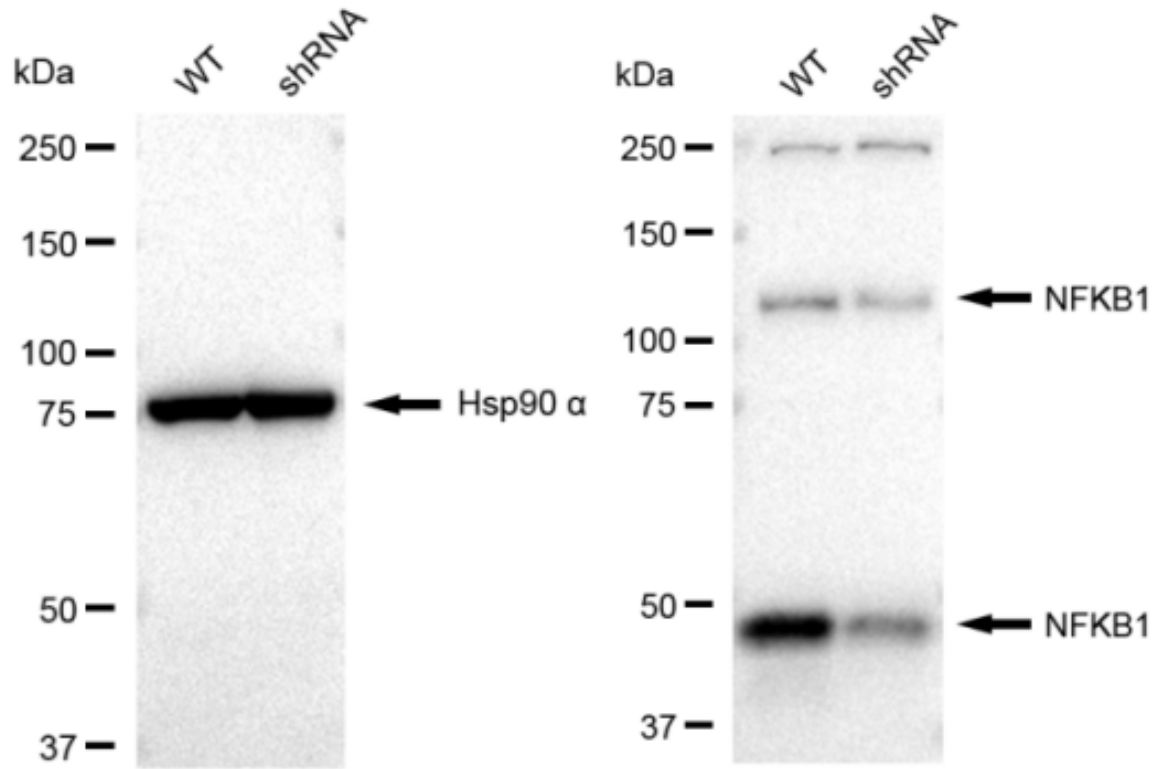
Flow cytometric analysis of NFkB1 expression in C2C12 cells using NFkB1 antibody 1:2,000. Green, isotype control; red, NFkB1.



Immunocytochemical staining of C2C12 cells with NFkB1 antibody 1:1,000. Nuclei were stained blue with DAPI; NFkB1 was stained magenta with Alexa Fluor® 647. Images were taken using Leica stellaris 5. Protein abundance based on laser Intensity and smart gain: Medium. Scale bar: 20 µm.



Western blotting analysis using anti-NFKB1 antibody 1:5,000 and HRP-conjugated goat anti-rabbit secondary antibody 1:20,000 respectively. Image was developed using FeQ™ ECL Substrate Kit .



Western blotting analysis using anti-NFKB1 antibody 1:5,000 and HRP-conjugated goat anti-rabbit secondary antibody 1:20,000 respectively. Image was developed using FeQ™ ECL Substrate Kit .