



SunLong Biotech Co.,LTD  
Tel: 0086-571- 56623320 Fax:0086-571- 56623318  
E-mail:sales@sunlongbiotech.com  
www.sunlongbiotech.com

## **[KD-Validated] Anti-NF2 / Merlin Rabbit Monoclonal Antibody**

Cat No.: KD-10637

### **Aliases:**

NF2; NF2, Moesin-Ezrin-Radixin Like (MERLIN) Tumor Suppressor; SCH; Schwannomin; Merlin; BANF; ACN; Neurofibromin 2 (Bilateral Acoustic Neuroma); Bilateral Acoustic Neurofibromatosis; Moesin-Ezrin-Radixin-Like Protein; Moesin-Ezrin-Radixin Like; Neurofibromin-2 ; Schwannomerlin; Merlin-1; Moesin-Ezrin-Radixin-Like Protein; Neurofibromin 2 (Merlin); MERLIN-1; MERLIN; SWNV

### **Background:**

UniProt Entry: [P35240](#);NCBI Gene Entry: [4771](#)

### **Application Information**

Molecular Weight: Predicted, 70 kDa, observed, 70 kDa Clonality: Rabbit monoclonal antibody Clone ID: 23GB2620 Species Reactivity: Human, Mouse, Rat Applications Tested: Western Blotting (WB), Flow Cytometry (FCM), Immunocytochemistry (IC)

### **Immunogen**

A synthesized peptide derived from human NF2 / Merlin

### **Isotype**

Rabbit IgG

### **Storage Buffer**

Supplied in PBS (pH 7.4) containing 50% glycerol, and 0.02% sodium azide.

#### Storage

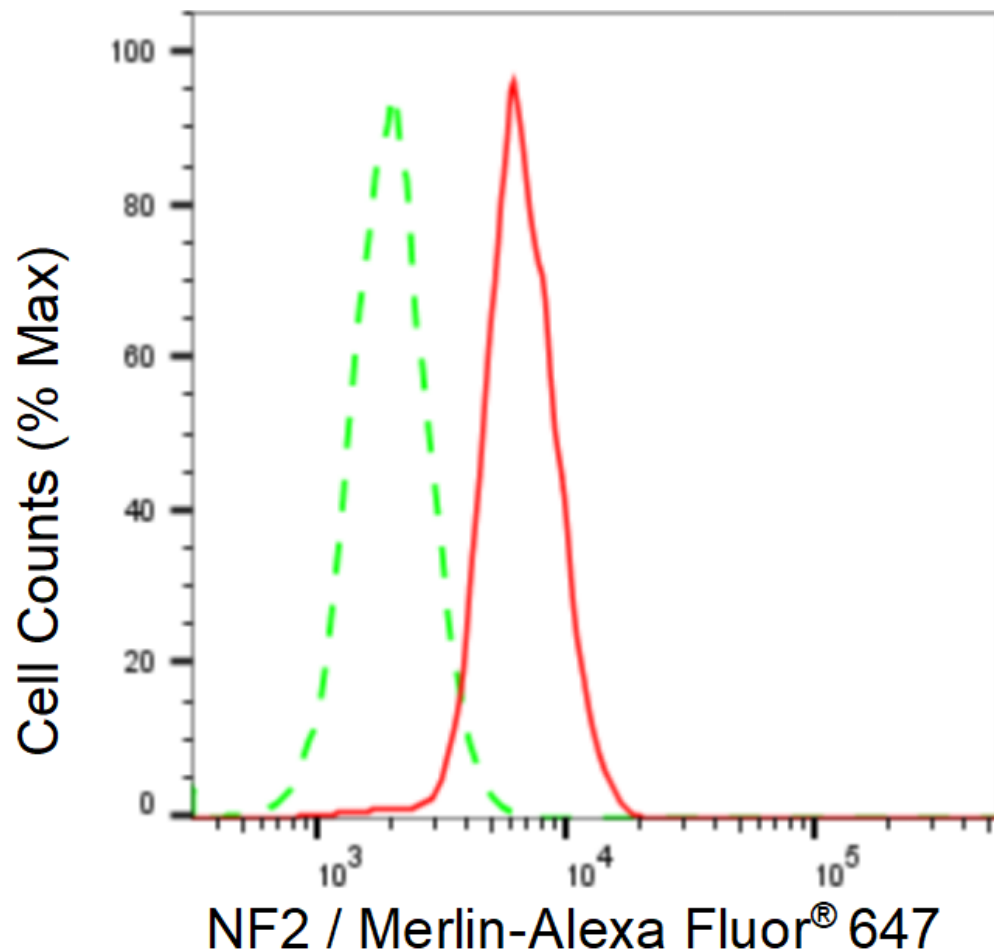
Store at -20 °C for one year.

#### Recommended Dilutions

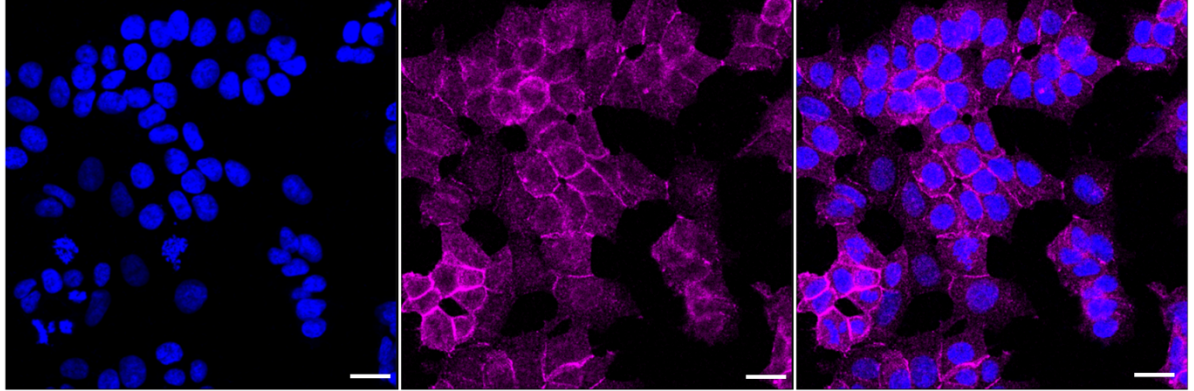
Western Blotting (WB): 1:1,000-1:5,000 Flow Cytometry (FCM): 1:2,000  
Immunocytochemistry (IC): 1:1,000

#### Protocols

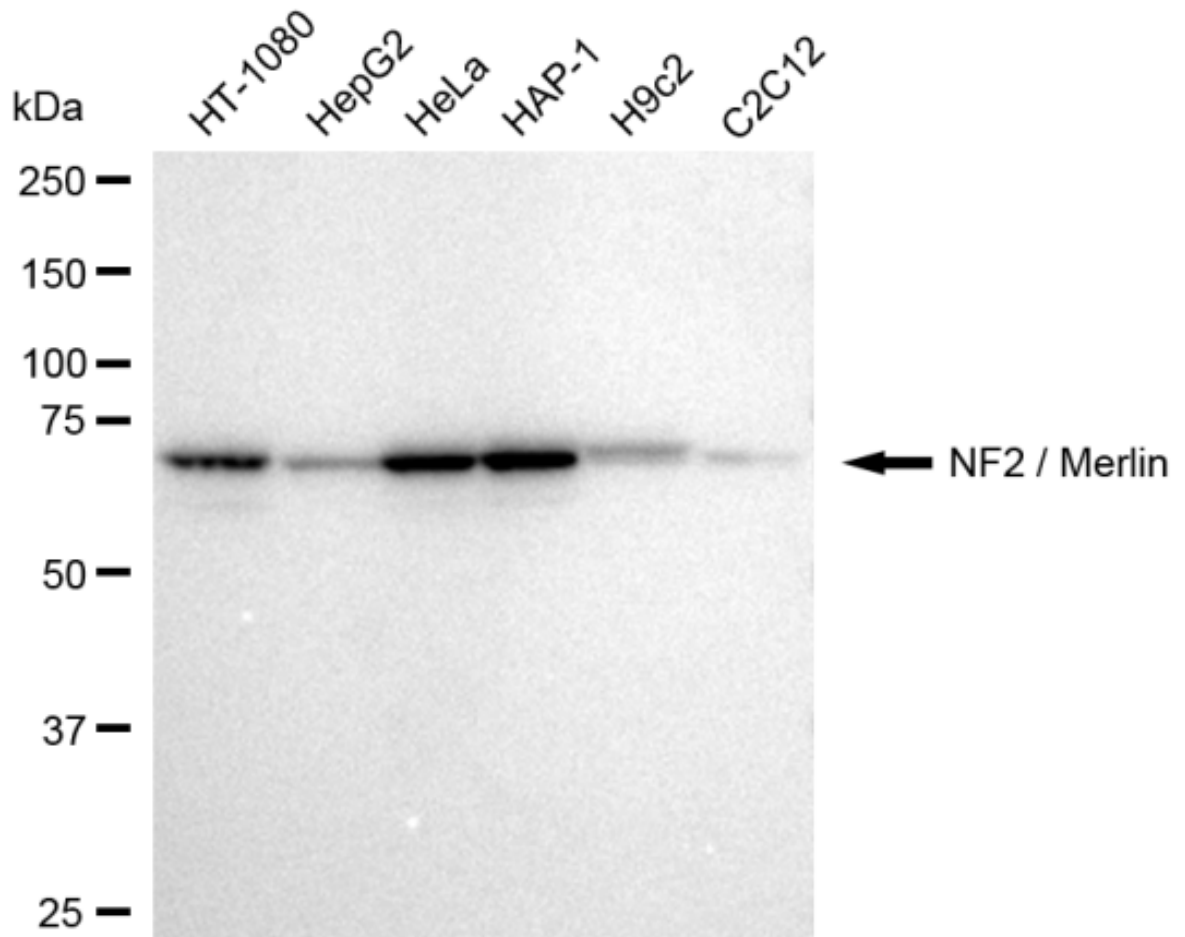
For general and specific antibody protocols please visit our website. Read all instructions before using this product.



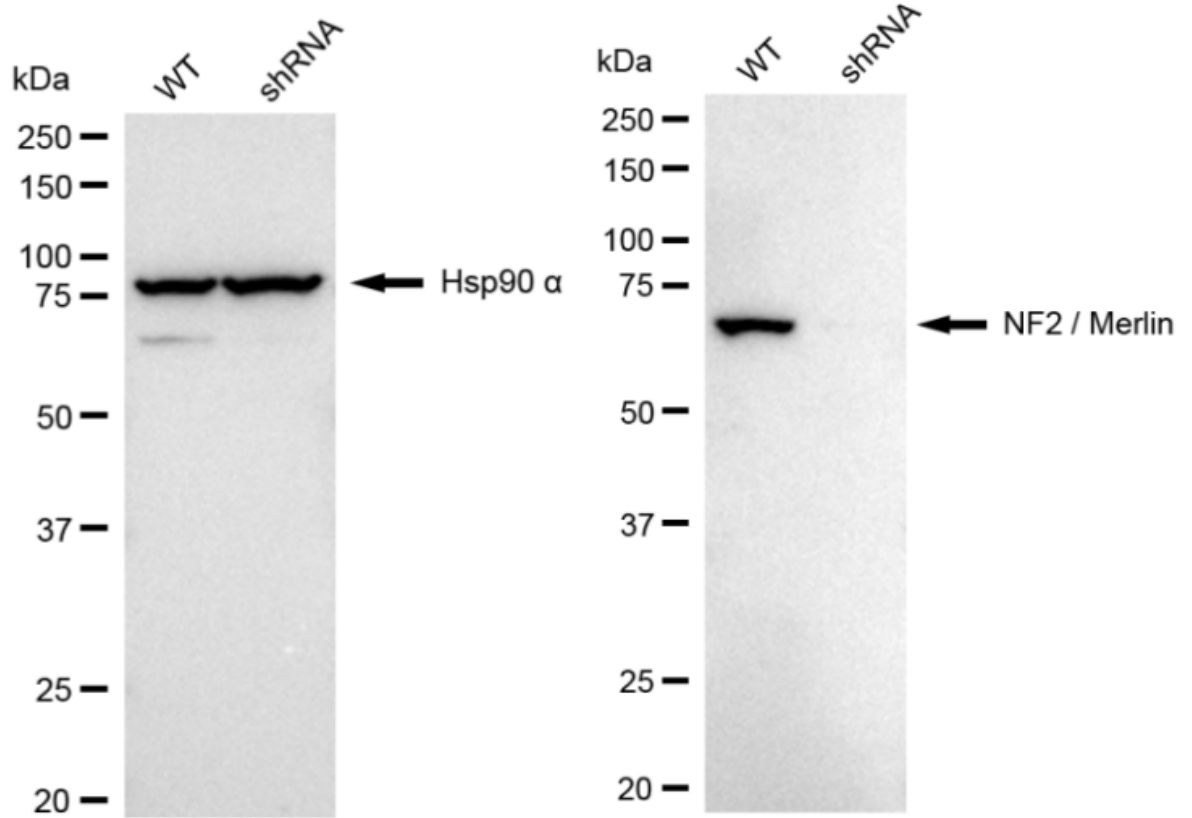
Flow cytometric analysis of NF2 / Merlin expression in HAP-1 cells using NF2 / Merlin antibody 1:2,000. Green, isotype control; red, NF2 / Merlin.



Immunocytochemical staining of HAP-1 cells with NF2 / Merlin antibody 1:1,000. Nuclei were stained blue with DAPI; NF2 / Merlin was stained magenta with Alexa Fluor® 647. Images were taken using Leica stellaris 5. Protein abundance based on laser Intensity and smart gain: Medium. Scale bar: 20  $\mu$ m.



Western blotting analysis using anti-NF2 / Merlin antibody 1:5,000 and HRP-conjugated goat anti-rabbit secondary antibody 1:20,000 respectively. Image was developed using FeQ™ ECL Substrate Kit .



Western blotting analysis using anti-NF2 / Merlin antibody 1:5,000 and HRP-conjugated goat anti-rabbit secondary antibody 1:20,000 respectively. Image was developed using NaQ™ ECL Substrate Kit .