



SunLong Biotech Co.,LTD
Tel: 0086-571- 56623320 Fax:0086-571- 56623318
E-mail:sales@sunlongbiotech.com
www.sunlongbiotech.com

[KD-Validated] Anti-NIMA Related Kinase 6 Rabbit Monoclonal Antibody

Cat No.: KD-10635

Aliases:

NIMA Related Kinase 6; SID6-1512; NIMA (Never In Mitosis Gene A)-Related Kinase 6; Putative Serine-Threonine Protein Kinase; Serine/Threonine-Protein Kinase Nek6; Never In Mitosis A-Related Kinase 6; NimA-Related Protein Kinase 6; Protein Kinase SID6-1512; EC 2.7.11.34; EC 2.7.11.1

Background:

UniProt Entry: [Q9HC98](#);NCBI Gene Entry: [10783](#)

Application Information

Molecular Weight: Predicted, 36 kDa, observed, 28 kDa Clonality: Rabbit monoclonal antibody Clone ID: 24GB755 Species Reactivity: Human, Mouse, Rat Applications Tested: Western Blotting (WB), Flow Cytometry (FCM), Immunocytochemistry (IC)

Immunogen

A synthesized peptide derived from human NEK6

Isotype

Rabbit IgG

Storage Buffer

Supplied in PBS (pH 7.4) containing 50% glycerol, and 0.02% sodium azide.

Storage

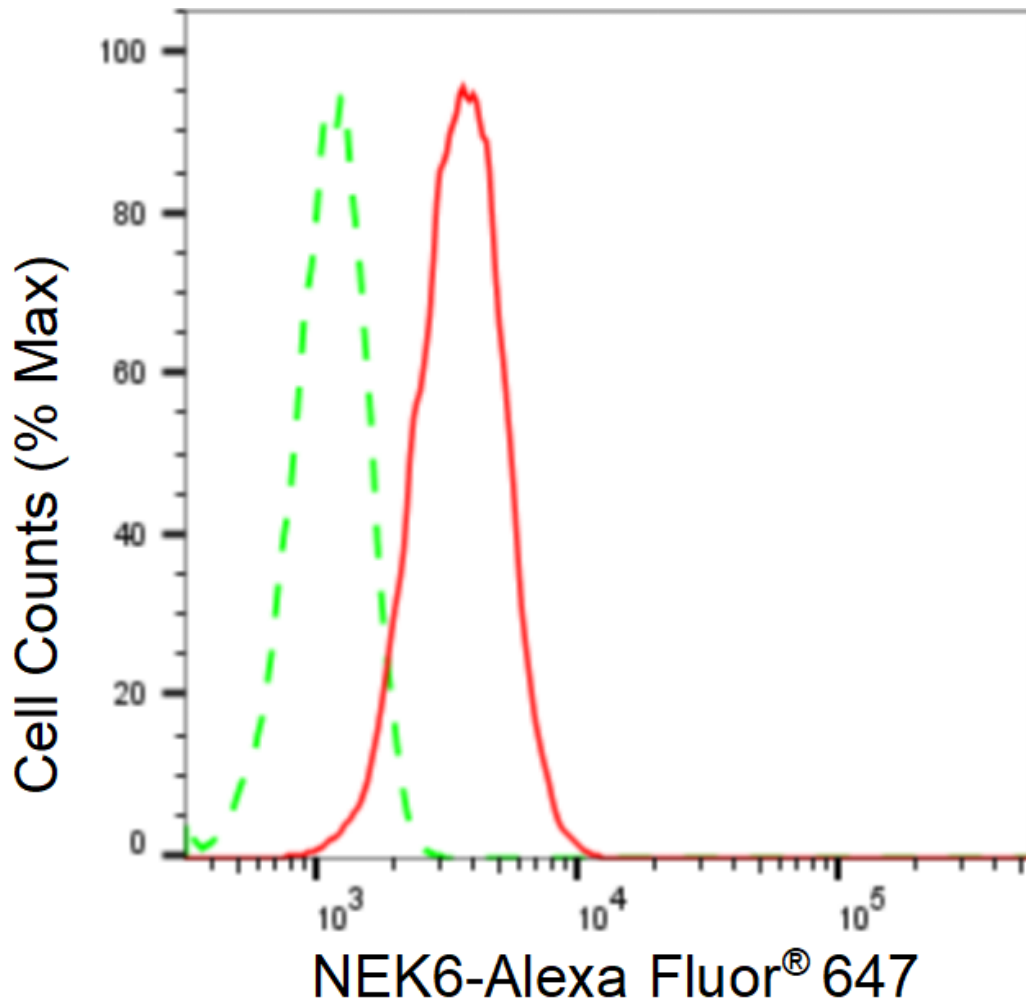
Store at -20 °C for one year.

Recommended Dilutions

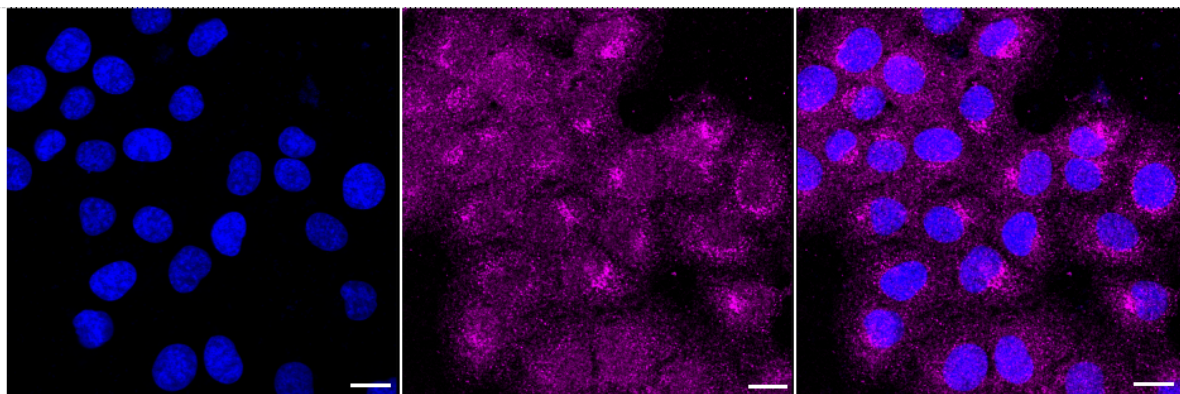
Western Blotting (WB): 1:1,000-1:5,000 Flow Cytometry (FCM): 1:2,000
Immunocytochemistry (IC): 1:1,000

Protocols

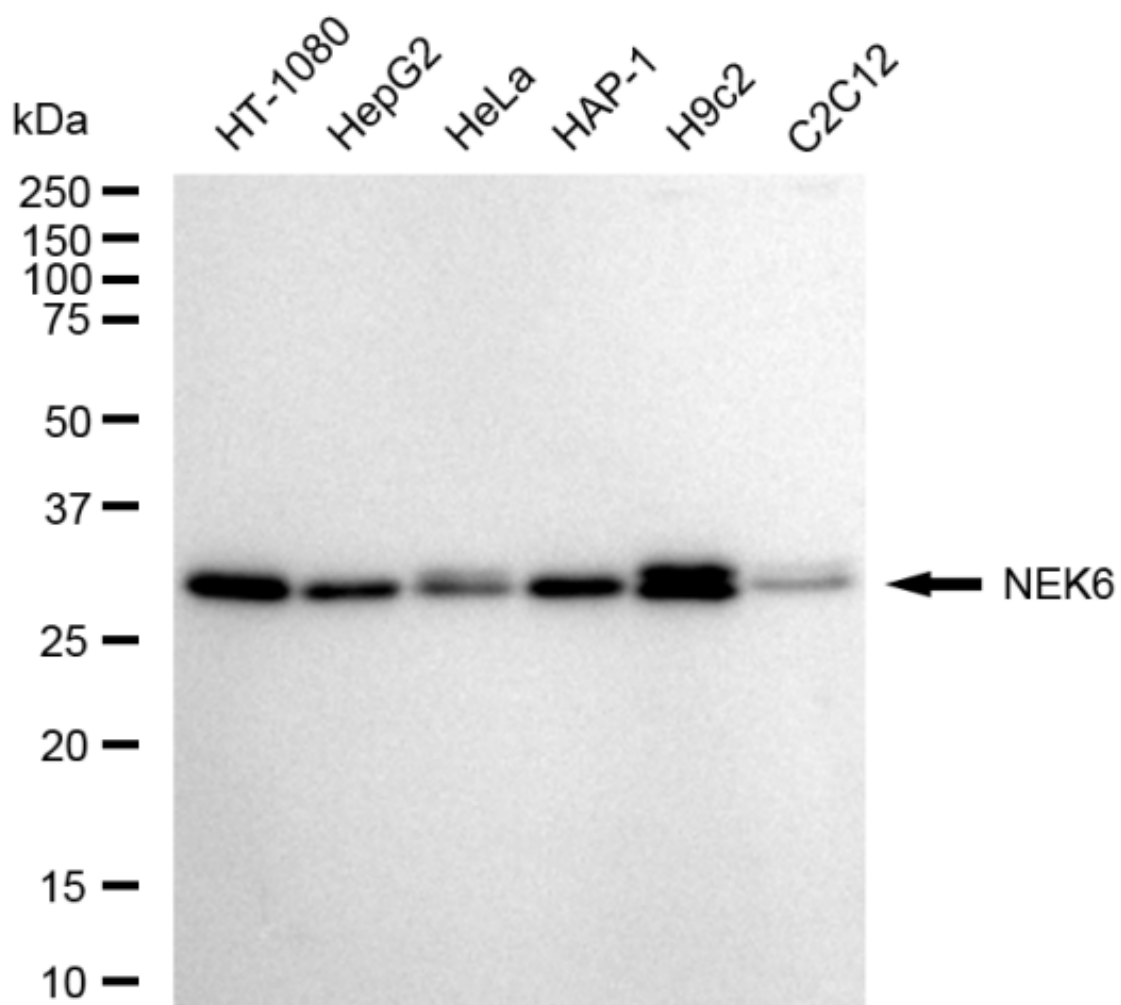
For general and specific antibody protocols please visit our website. Read all instructions before using this product.



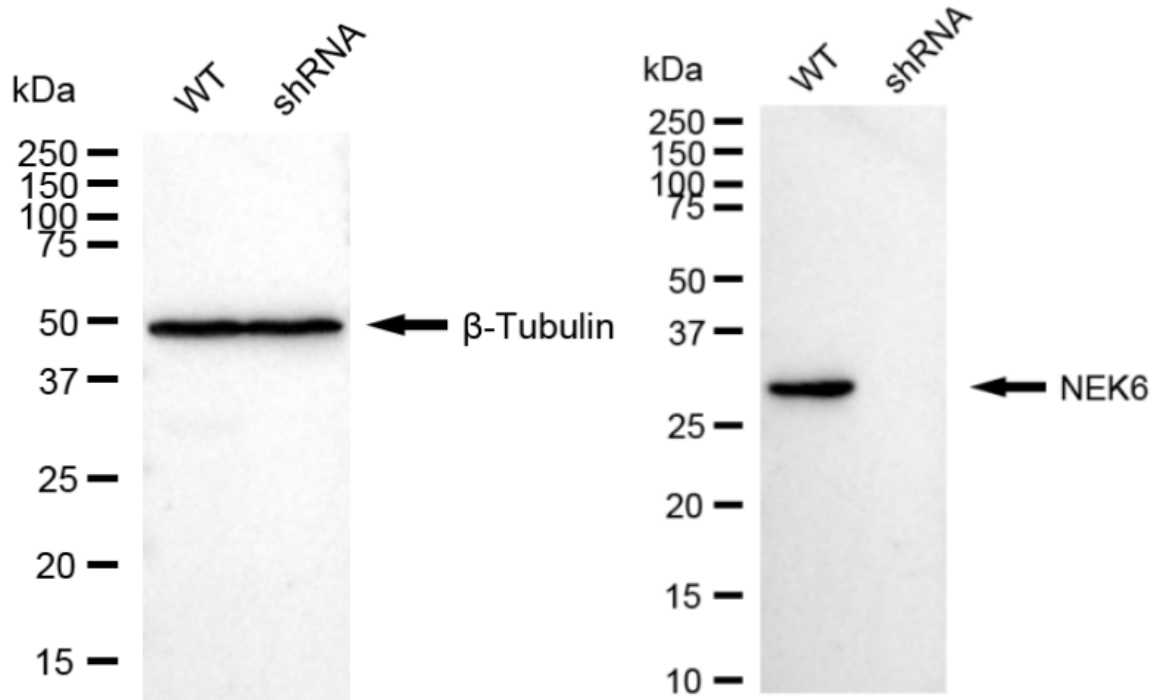
Flow cytometric analysis of NEK6 expression in HT-1080 cells using NEK6 antibody 1:2,000. Green, isotype control; red, NEK6.



Immunocytochemical staining of HT-1080 cells with anti-NEK6 antibody 1:1,000. Nuclei were stained blue with DAPI; NEK6 was stained magenta with Alexa Fluor® 647. Images were taken using Leica stellaris 5. Protein abundance based on laser Intensity and smart gain: Medium. Scale bar: 20 μ m.



Western blotting analysis using anti-NEK6 antibody 1:5,000 and HRP-conjugated goat anti-rabbit secondary antibody 1:20,000 respectively. Image was developed using FeQ™ ECL Substrate Kit .



Western blotting analysis using anti-NEK6 antibody 1:5,000 and HRP-conjugated goat anti-rabbit secondary antibody 1:20,000 respectively. Image was developed using NaQ™ ECL Substrate Kit .