



SunLong Biotech Co.,LTD
Tel: 0086-571- 56623320 Fax:0086-571- 56623318
E-mail:sales@sunlongbiotech.com
www.sunlongbiotech.com

[KD-Validated] Anti-NEK2 Rabbit Monoclonal Antibody

Cat No.: KD-10634

Aliases:

NEK2; NIMA Related Kinase 2; NEK2A; NLK1; PPP1R111; RP67; NIMA (Never In Mitosis Gene A)-Related Kinase 2; Protein Phosphatase 1, Regulatory Subunit 111; Serine/Threonine-Protein Kinase Nek2; NimA-Related Protein Kinase; NimA-Like Protein Kinase 1; EC 2.7.11.1; Never In Mitosis A-Related Kinase; EC 2.7.11; HsPK 21; HSPK 21; HsPK21

Background:

UniProt Entry: [P51955](#);NCBI Gene Entry: [4751](#)

Application Information

Molecular Weight: Predicted, 52 kDa, observed, 48 kDa Clonality: Rabbit monoclonal antibody Clone ID: 23GB2085 Species Reactivity: Human Applications Used: Western Blotting (WB), Flow Cytometry (FCM), Immunocytochemistry (IC)

Immunogen

A synthesized peptide derived from human NEK2

Isotype

Rabbit IgG

Storage Buffer

Supplied in PBS (pH 7.4) containing 50% glycerol, and 0.02% sodium azide.

Storage

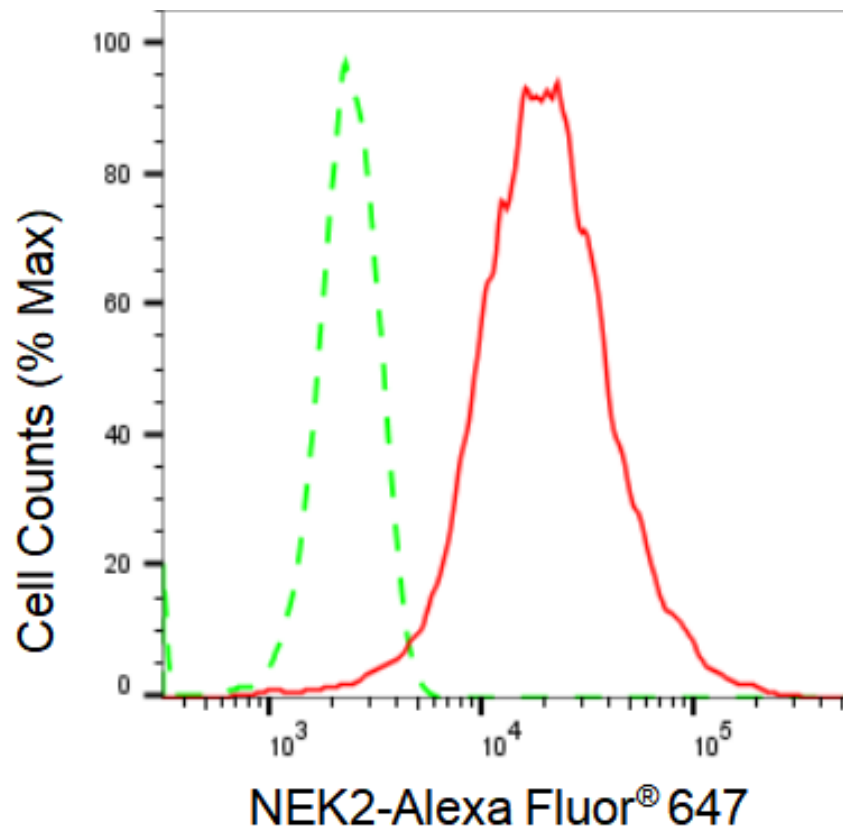
Store at -20 °C for one year.

Recommended Dilutions

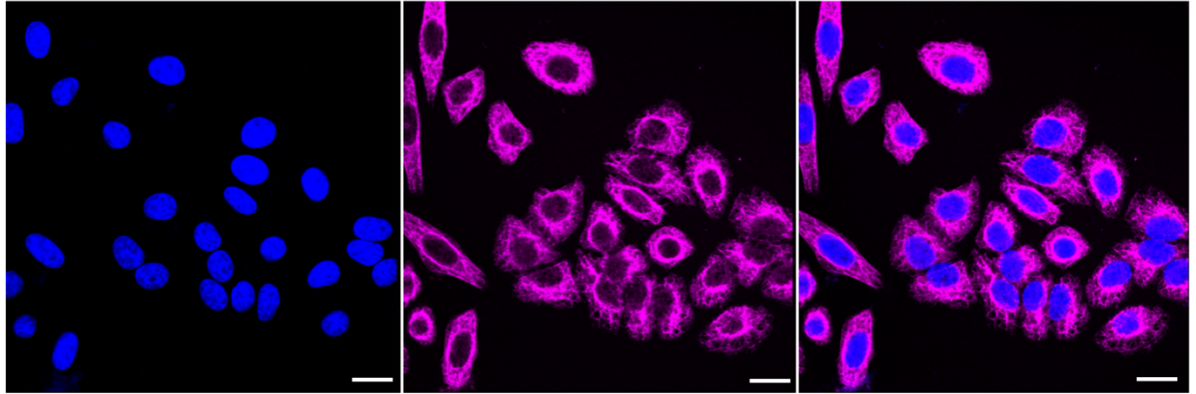
Western Blotting (WB): 1:1,000-1:5,000 Flow Cytometry (FCM): 1:2,000
Immunocytochemistry (IC): 1:1,000

Protocols

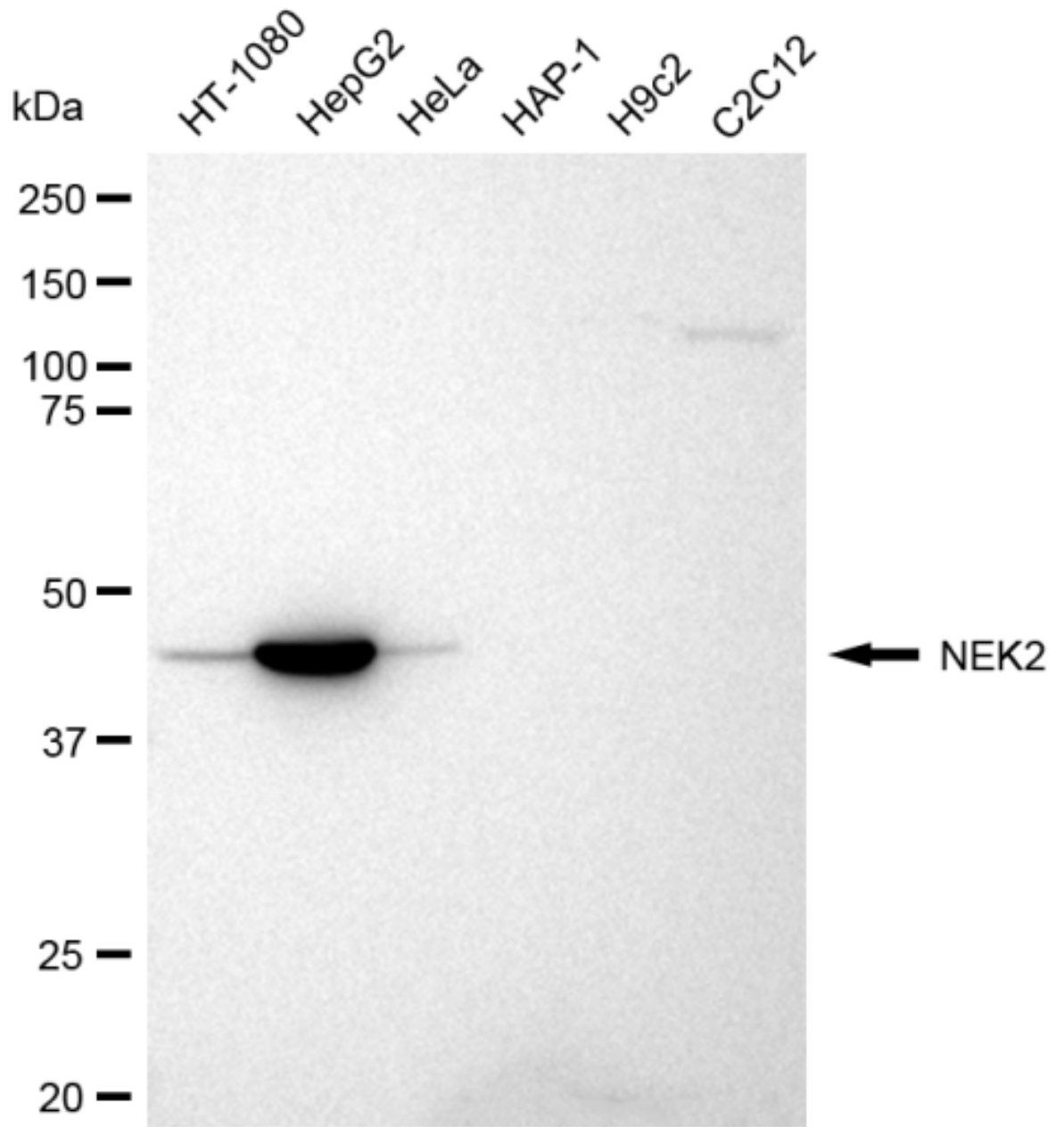
For general and specific antibody protocols please visit our website. Read all instructions before using this product.



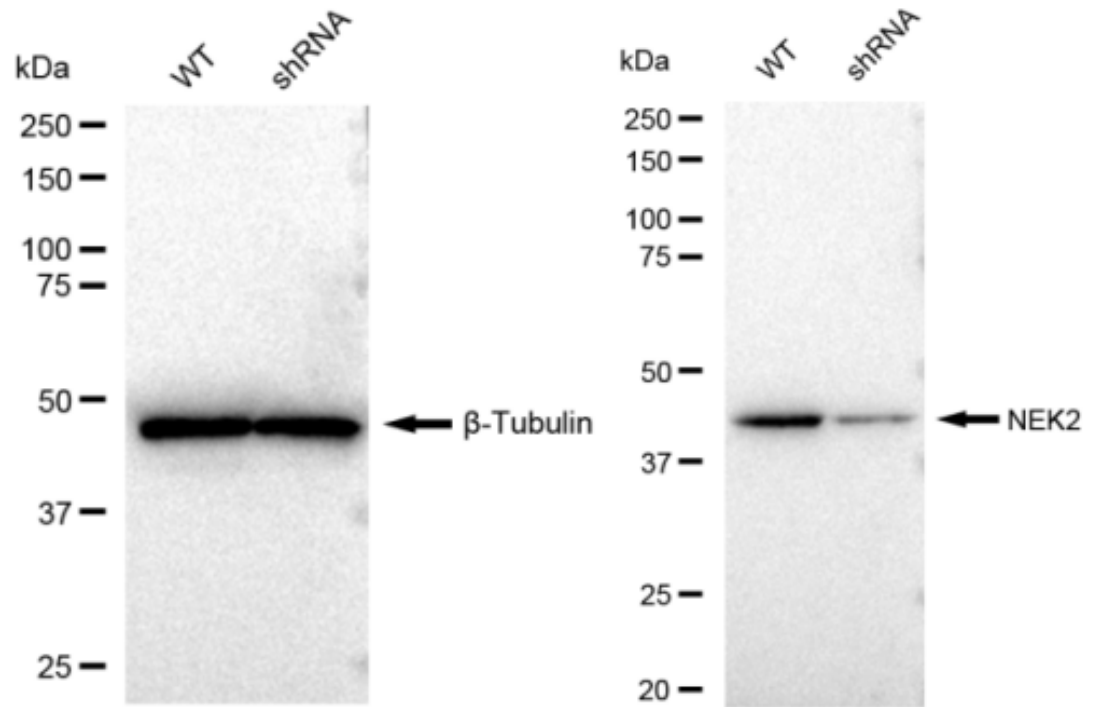
Flow cytometric analysis of NEK2 expression in HepG2 cells using NEK2 antibody 1:2,000. Green, isotype control; red, NEK2.



Immunocytochemical staining of HepG2 cells with NEK2 antibody 1:1,000. Nuclei were stained blue with DAPI; NEK2 was stained magenta with Alexa Fluor® 647. Images were taken using Leica stellaris 5. Protein abundance based on laser Intensity and smart gain: High. Scale bar: 20 μm .



Western blotting analysis using anti-NEK2 antibody 1:5,000 and HRP-conjugated goat anti-rabbit secondary antibody 1:20,000 respectively. Image was developed using FeQ™ ECL Substrate Kit .



Western blotting analysis using anti-NEK2 antibody 1:5,000 and HRP-conjugated goat anti-rabbit secondary antibody 1:20,000 respectively. Image was developed using FeQ™ ECL Substrate Kit .