



SunLong Biotech Co.,LTD
Tel: 0086-571- 56623320 Fax:0086-571- 56623318
E-mail:sales@sunlongbiotech.com
www.sunlongbiotech.com

[KD-Validated] Anti-NDEL1 Rabbit Monoclonal Antibody

Cat No.: KD-10628

Aliases:

NDEL1; NudE Neurodevelopment Protein 1 Like 1; MITAP1; NUDEL; NDE1L1; NDE2; Nuclear Distribution Protein NudE-Like 1; Mitosin-Associated Protein 1; Protein Nudel; EOPA; NudE Nuclear Distribution Gene E Homolog (A. Nidulans)-Like 1; NudE Nuclear Distribution E Homolog (A. Nidulans)-Like 1; NudE Nuclear Distribution Gene E Homolog-Like 1; NudE Nuclear Distribution E Homolog-Like 1; Mitosin-Associated Protein MITAP1; Endooligopeptidase A

Background:

UniProt Entry: [Q9GZM8](#);NCBI Gene Entry: [81565](#)

Application Information

Molecular Weight: Predicted, 38 kDa, observed, 40 kDa Clonality: Rabbit monoclonal antibody Clone ID: 23GB4565 Species Reactivity: Human, Mouse, Rat Applications Tested: Western Blotting (WB), Immunocytochemistry (IC)

Immunogen

A synthesized peptide derived from human NUDEL

Isotype

Rabbit IgG

Storage Buffer

Supplied in PBS (pH 7.4) containing 50% glycerol, and 0.02% sodium azide.

Storage

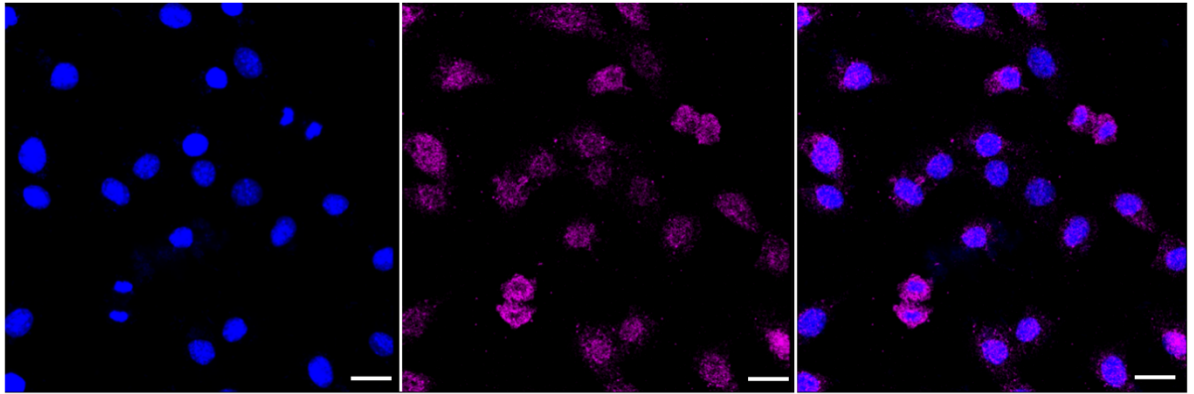
Store at -20 °C for one year.

Recommended Dilutions

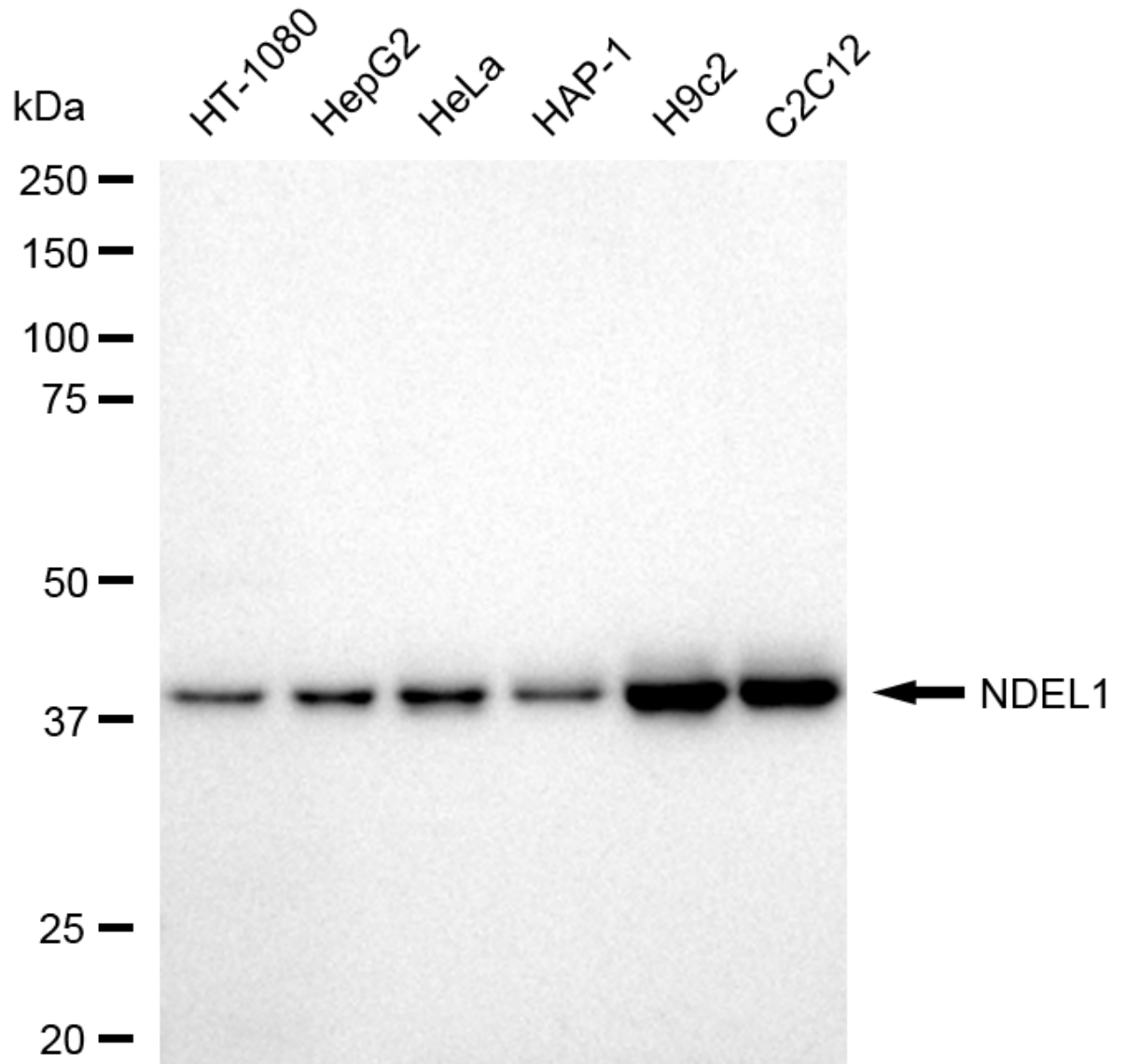
Western Blotting (WB): 1:1,000-1:5,000 Immunocytochemistry (IC): 1:1,000

Protocols

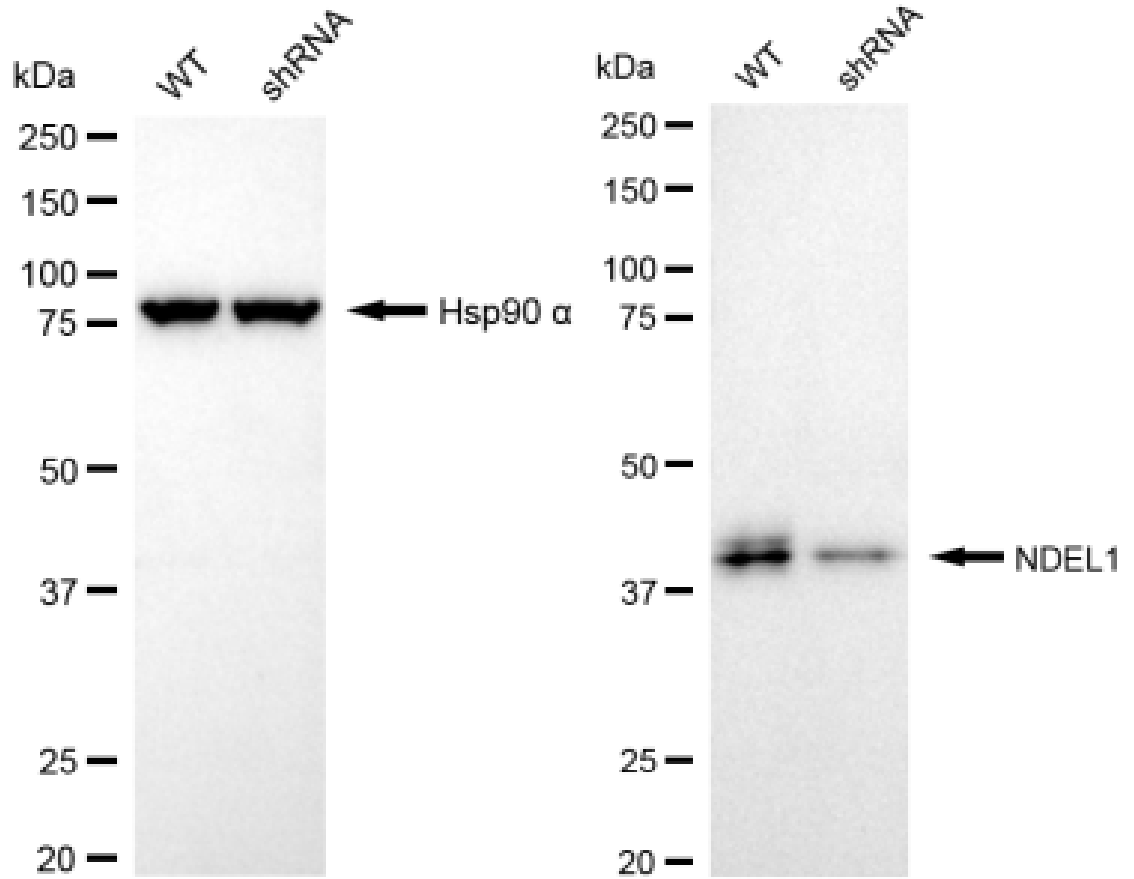
For general and specific antibody protocols please visit our website. Read all instructions before using this product.



Immunocytochemical staining of C2C12 cells with NDEL1 antibody 1:1,000. Nuclei were stained blue with DAPI; NDEL1 was stained magenta with Alexa Fluor® 647. Images were taken using Leica stellaris 5. Protein abundance based on laser Intensity and smart gain: Very low. Scale bar: 20 µm.



Western blotting analysis using anti-NDEL1 antibody 1:5,000 and HRP-conjugated goat anti-rabbit secondary antibody 1:20,000 respectively. Image was developed using FeQ™ ECL Substrate Kit .



Western blotting analysis using anti-NDEL1 antibody 1:5,000 and HRP-conjugated goat anti-rabbit secondary antibody 1:20,000 respectively. Image was developed using FeQ™ ECL Substrate Kit .