



SunLong Biotech Co.,LTD  
Tel: 0086-571- 56623320 Fax:0086-571- 56623318  
E-mail:sales@sunlongbiotech.com  
www.sunlongbiotech.com

## [KD-Validated] Anti-Nicastrin Rabbit Monoclonal Antibody

Cat No.: KD-10627

### Aliases:

Nicastrin; ATAG1874; Anterior Pharynx-Defective 2; KIAA0253

### Background:

UniProt Entry: [Q92542](#);NCBI Gene Entry: [23385](#)

### Application Information

Molecular Weight: Predicted, 78 kDa, observed, 110-120 kDa Clonality: Rabbit monoclonal antibody Clone ID: 23GB1040 Species Reactivity: Human, Mouse, Rat Applications Tested: Western Blotting (WB), Flow Cytometry (FCM), Immunocytochemistry (IC)

### Immunogen

A synthesized peptide derived from human Nicastrin

### Isotype

Rabbit IgG

### Storage Buffer

Supplied in PBS (pH 7.4) containing 50% glycerol, and 0.02% sodium azide.

### Storage

Store at -20 °C for one year.

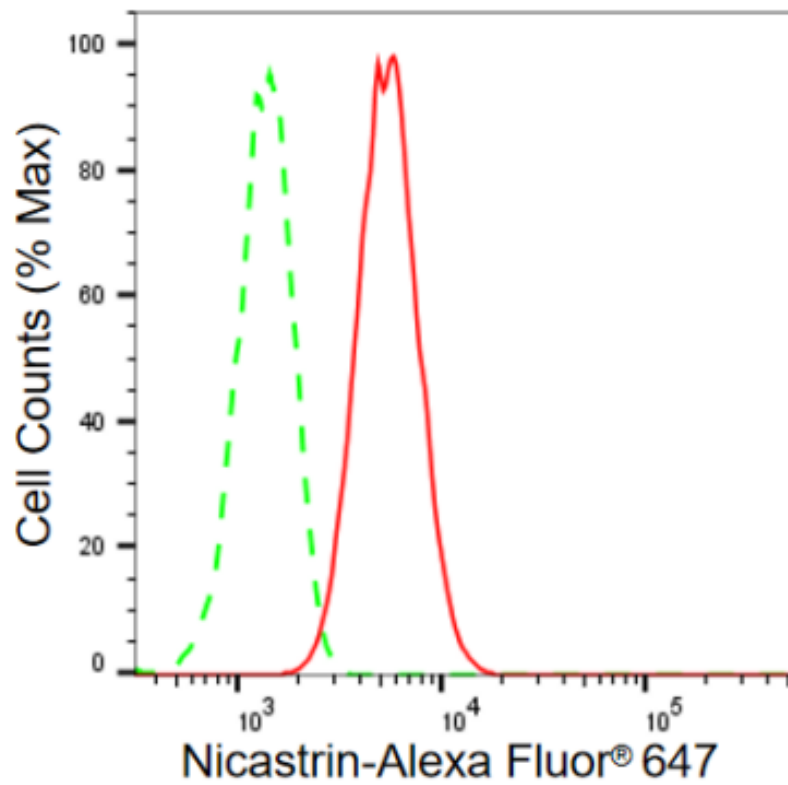
### Recommended Dilutions

Western Blotting (WB): 1:1,000-1:5,000 Flow Cytometry (FCM): 1:2,000

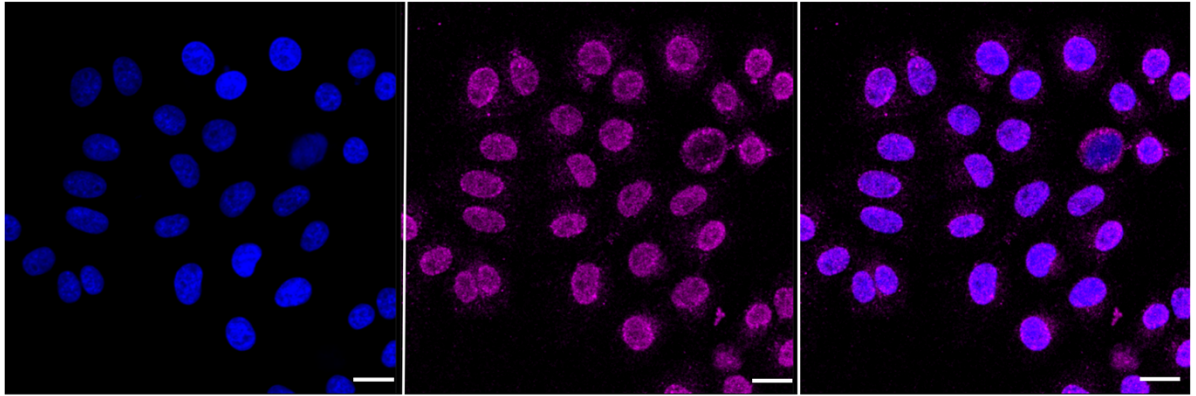
Immunocytochemistry (IC): 1:1,000

### Protocols

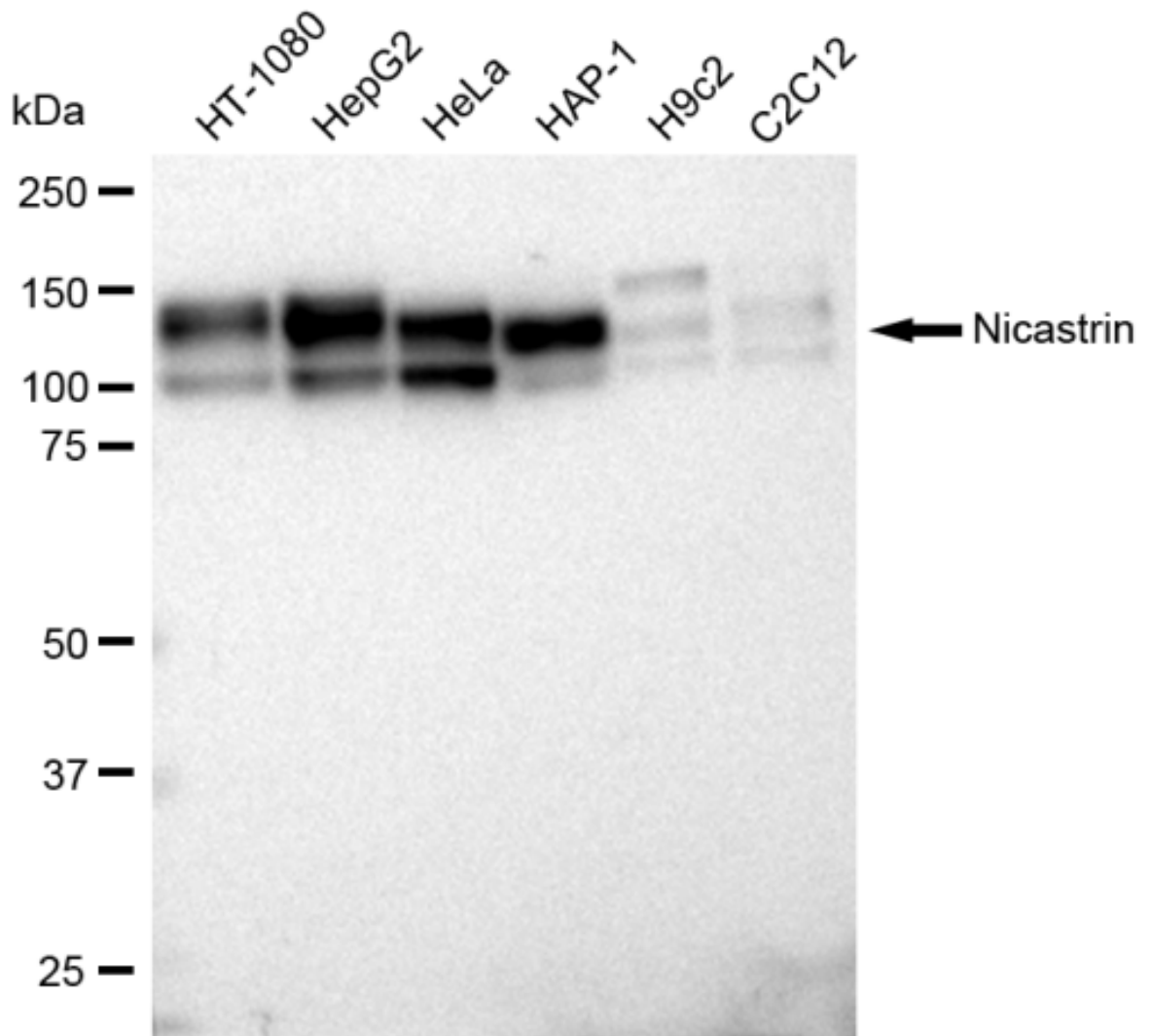
For general and specific antibody protocols please visit our website. Read all instructions before using this product.



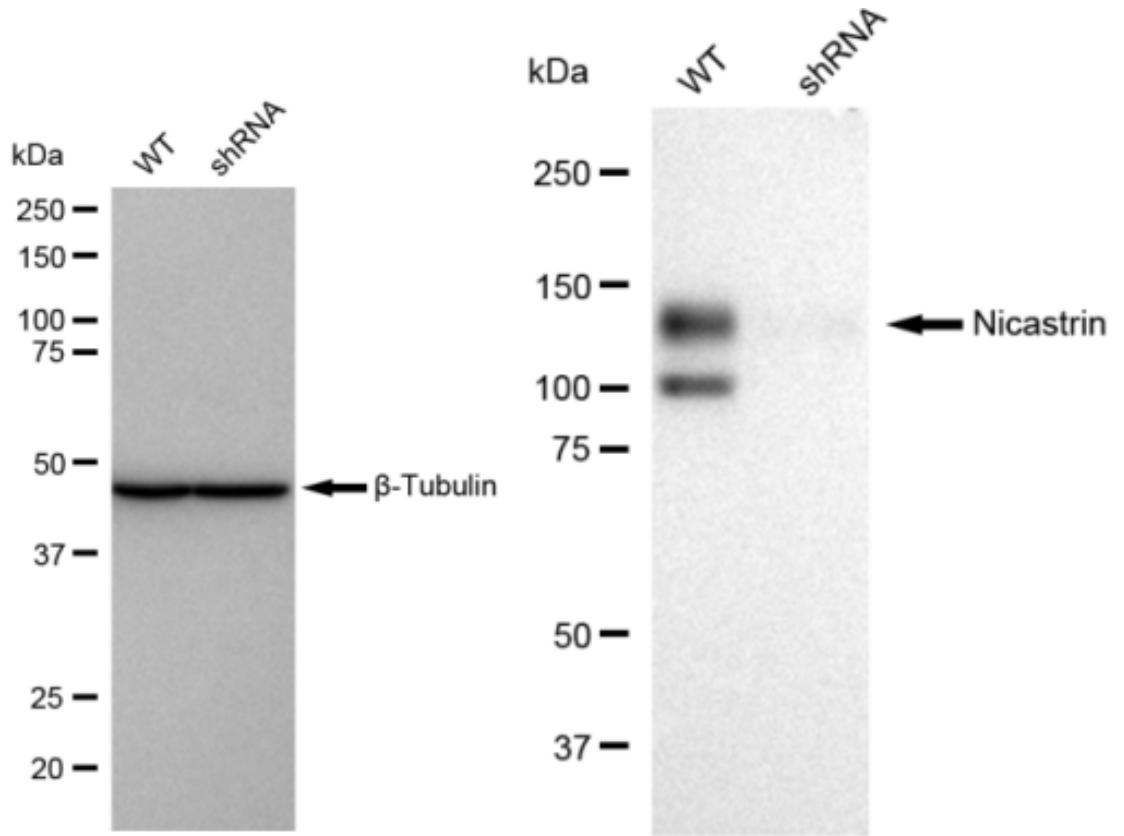
Flow cytometric analysis of Nicastrin expression in HepG2 cells using Nicastrin antibody 1:2,000. Green, isotype control; red, Nicastrin.



Immunocytochemical staining of HepG2 cells with Nicastrin antibody 1:1,000. Nuclei were stained blue with DAPI; Nicastrin was stained magenta with Alexa Fluor® 647. Images were taken using Leica stellaris 5. Protein abundance based on laser Intensity and smart gain: Medium. Scale bar: 20  $\mu$ m.



Western blotting analysis using anti-Nicastrin antibody 1:5,000 and HRP-conjugated goat anti-rabbit secondary antibody 1:20,000 respectively. Image was developed using FeQ™ ECL Substrate Kit .



Western blotting analysis using anti-Nicastrin antibody 1:5,000 and HRP-conjugated goat anti-rabbit secondary antibody 1:20,000 respectively. Image was developed using FeQ™ ECL Substrate Kit .