



SunLong Biotech Co.,LTD
Tel: 0086-571- 56623320 Fax:0086-571- 56623318
E-mail:sales@sunlongbiotech.com
www.sunlongbiotech.com

[KD-Validated] Anti-Neuronal Calcium Sensor 1 Rabbit Monoclonal Antibody

Cat No.: KD-10626

Aliases:

Neuronal Calcium Sensor 1; NCS-1; FREQ; Frequenin-Like Ubiquitous Protein;
Frequenin-Like Protein; Frequenin Homolog; FLUP; Frequenin (Drosophila) Homolog;
Frequenin Homolog (Drosophila)

Background:

UniProt Entry: [P62166](#);NCBI Gene Entry: [23413](#)

Application Information

Molecular Weight: Predicted, 22 kDa, observed, 21 kDa Clonality: Rabbit monoclonal
antibody Clone ID: 24GB25 Species Reactivity: Human, Mouse, Rat Applications
Tested: Western Blotting (WB), Flow Cytometry (FCM), Immunocytochemistry (IC)

Immunogen

A synthesized peptide derived from human NCS1

Isotype

Rabbit IgG

Storage Buffer

Supplied in PBS (pH 7.4) containing 50% glycerol, and 0.02% sodium azide.

Storage

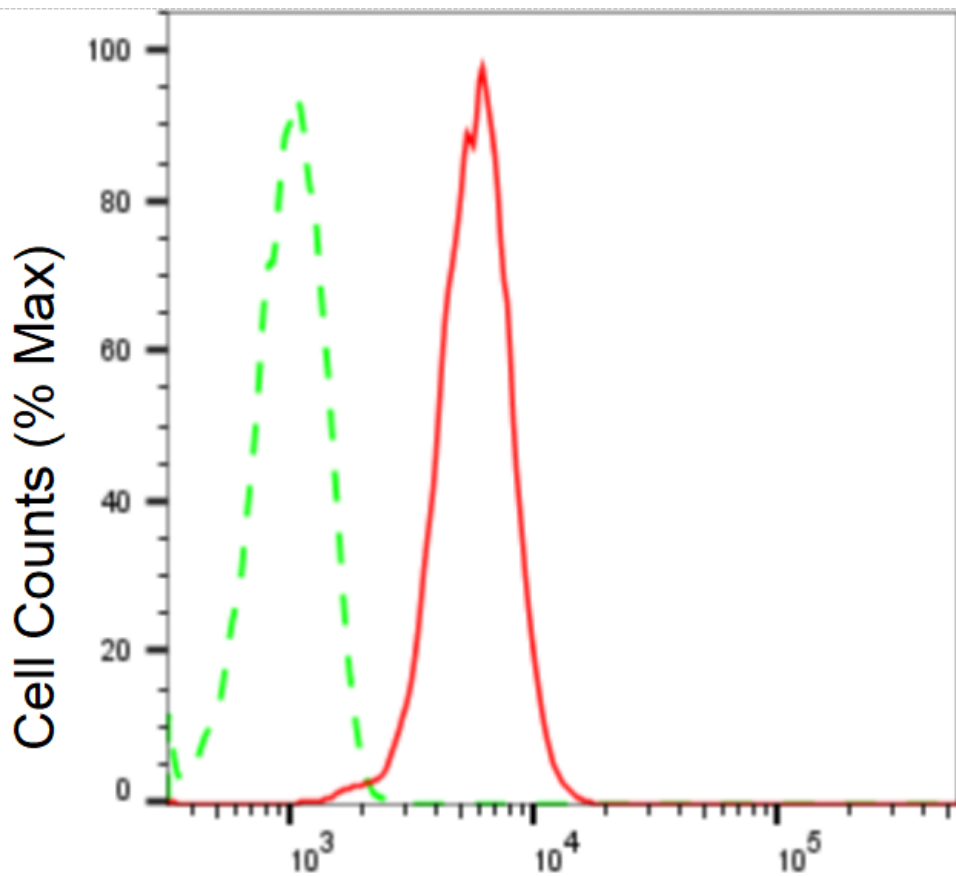
Store at -20 °C for one year.

Recommended Dilutions

Western Blotting (WB): 1:1,000-1:5,000 Flow Cytometry (FCM): 1:2,000
Immunocytochemistry (IC): 1:1,000

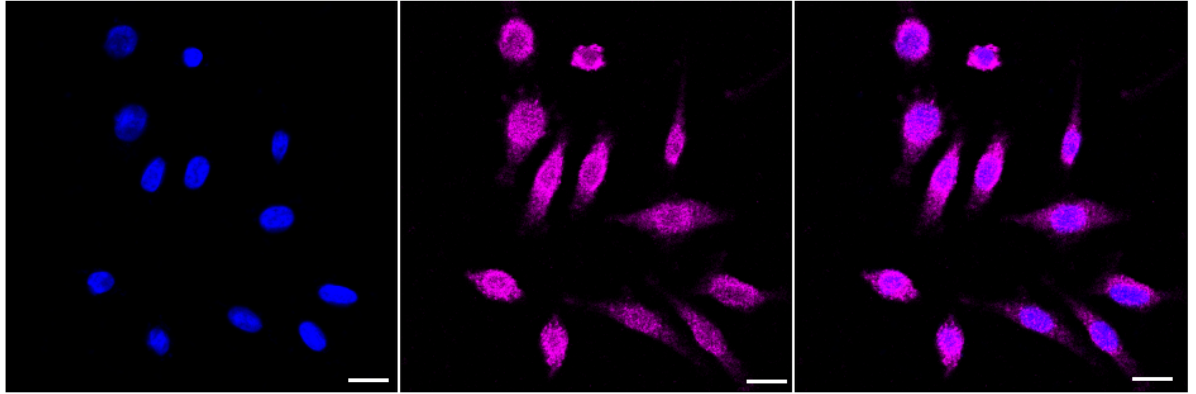
Protocols

For general and specific antibody protocols please visit our website. Read all instructions before using this product.

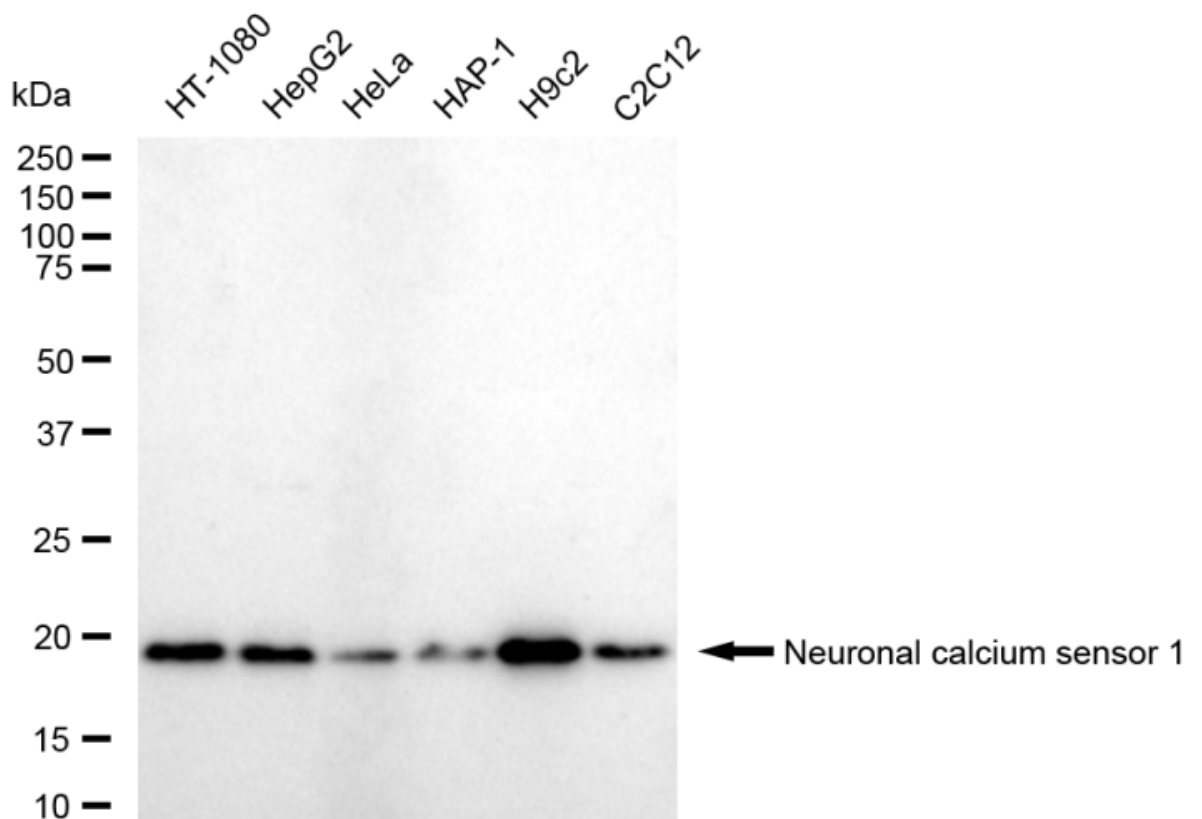


Neuronal calcium sensor 1-Alexa Fluor[®] 647

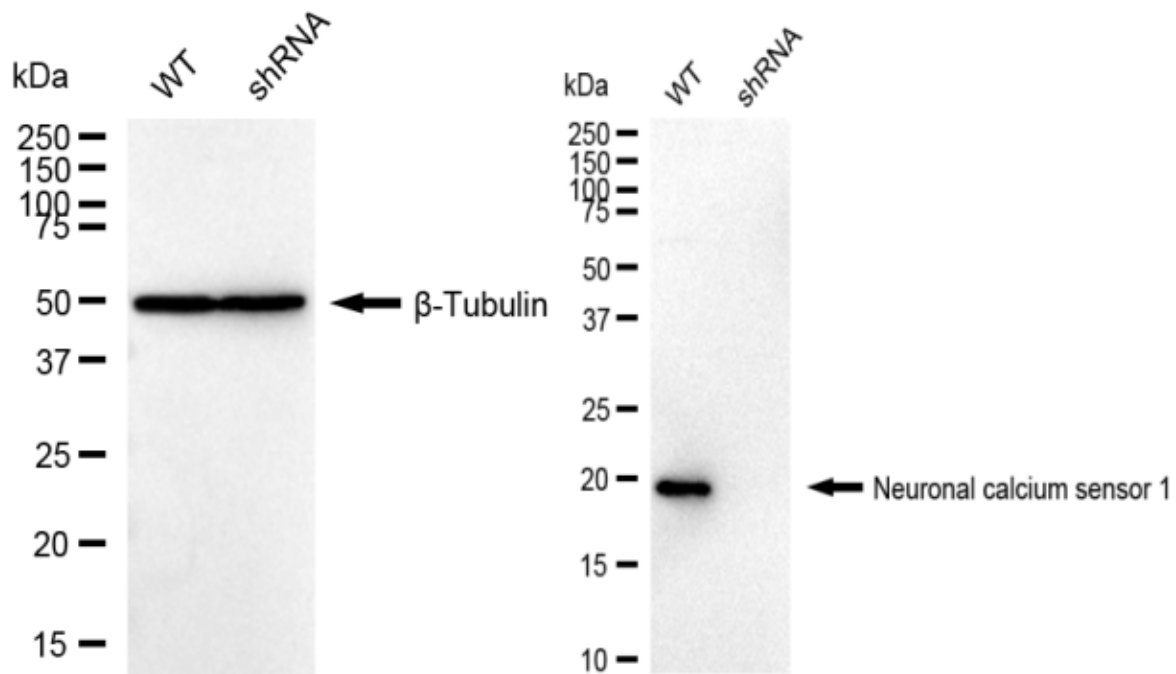
Flow cytometric analysis of Neuronal calcium sensor 1 expression in HepG2 cells using Neuronal calcium sensor 1 antibody 1:2,000. Green, isotype control; red, Neuronal calcium sensor 1.



Immunocytochemical staining of HepG2 cells with anti-Neuronal calcium sensor 1 antibody 1:1,000. Nuclei were stained blue with DAPI; Neuronal calcium sensor 1 was stained magenta with Alexa Fluor® 647. Images were taken using Leica stellaris 5. Protein abundance based on laser Intensity and smart gain: Low. Scale bar: 20 µm.



Western blotting analysis using anti-Neuronal calcium sensor 1 antibody 1:5,000 and HRP-conjugated goat anti-rabbit secondary antibody 1:20,000 respectively. Image was developed using FeQ™ ECL Substrate Kit .



Western blotting analysis using anti-Neuronal calcium sensor 1 antibody 1:5,000 and HRP-conjugated goat anti-rabbit secondary antibody 1:20,000 respectively. Image was developed using NaQ™ ECL Substrate Kit .