



SunLong Biotech Co.,LTD  
Tel: 0086-571- 56623320 Fax:0086-571- 56623318  
E-mail:sales@sunlongbiotech.com  
www.sunlongbiotech.com

## **[KD-Validated] Anti-Non-SMC Condensin I Complex Subunit D2 Rabbit Monoclonal Antibody**

Cat No.: KD-10625

### **Aliases:**

Non-SMC Condensin I Complex Subunit D2; HCAP-D2; CNAP1; KIAA0159; CAP-D2; Chromosome Condensation-Related SMC-Associated Protein 1; Chromosome-Associated Protein D2; Condensin Complex Subunit 1; XCAP-D2 Homolog; Chromosome Condensation Related SMC Associated Protein 1; Non-SMC Condensin I Complex, Subunit D2; MCPH21; CAPD2

### **Background:**

UniProt Entry: [Q15021](#);NCBI Gene Entry: [9918](#)

### **Application Information**

Molecular Weight: Predicted, 157 kDa, observed, 150 kDa Clonality: Rabbit monoclonal antibody Clone ID: 24GB75 Species Reactivity: Human, Mouse, Rat Applications Tested: Western Blotting (WB), Flow Cytometry (FCM), Immunocytochemistry (IC)

### **Immunogen**

A synthesized peptide derived from human CNAP1

### **Isotype**

Rabbit IgG

### **Storage Buffer**

Supplied in PBS (pH 7.4) containing 50% glycerol, and 0.02% sodium azide.

#### Storage

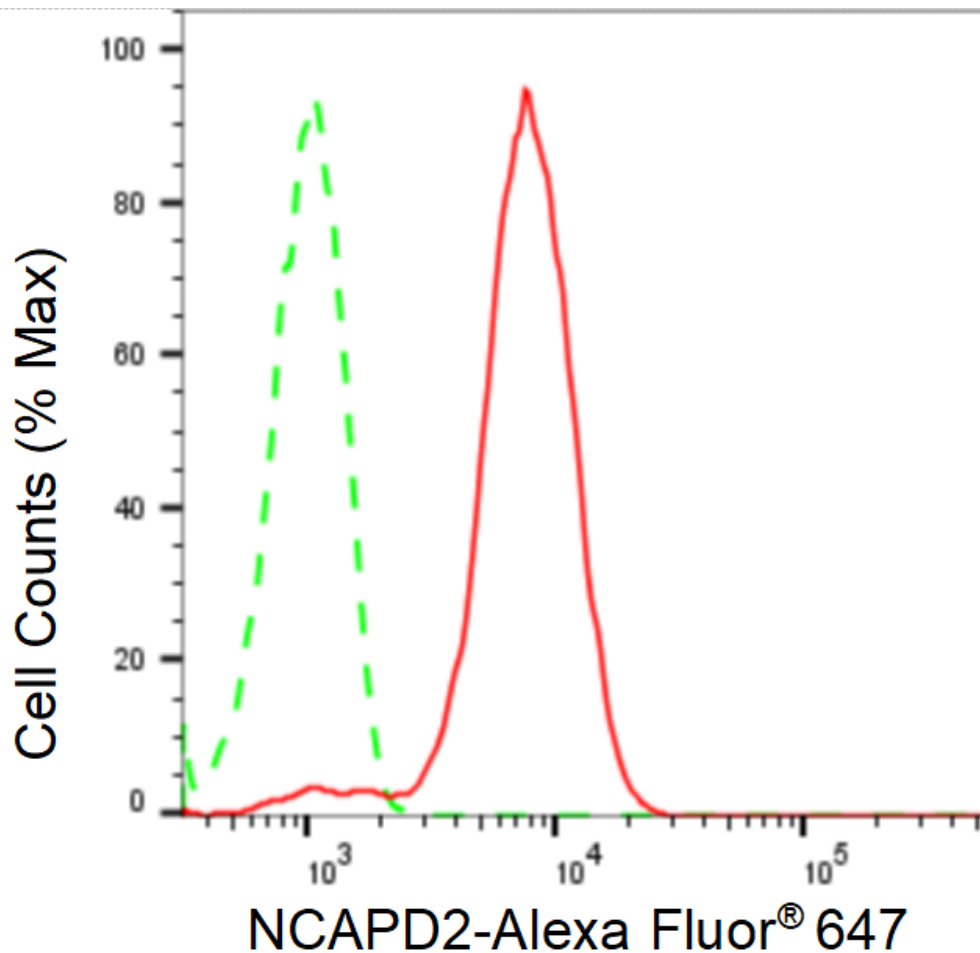
Store at -20 °C for one year.

#### Recommended Dilutions

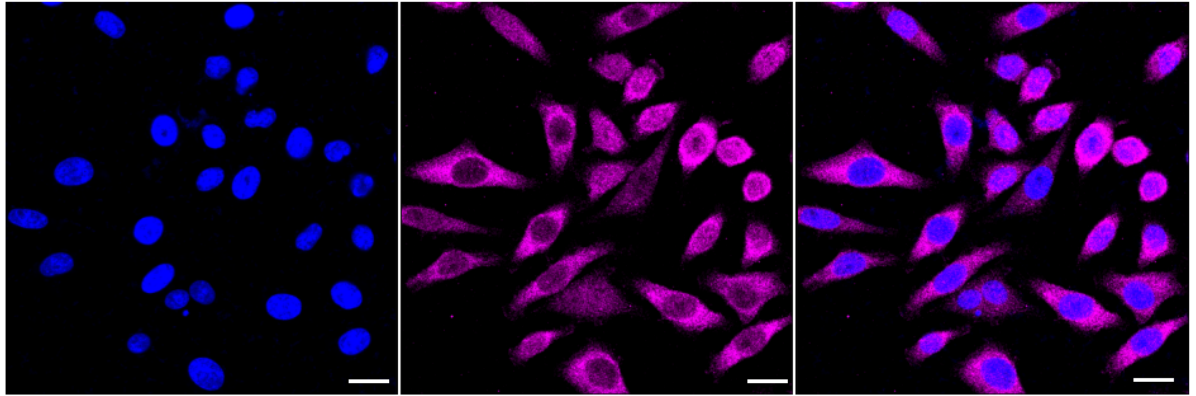
Western Blotting (WB): 1:1,000-1:5,000 Flow Cytometry (FCM): 1:2,000  
Immunocytochemistry (IC): 1:1,000

#### Protocols

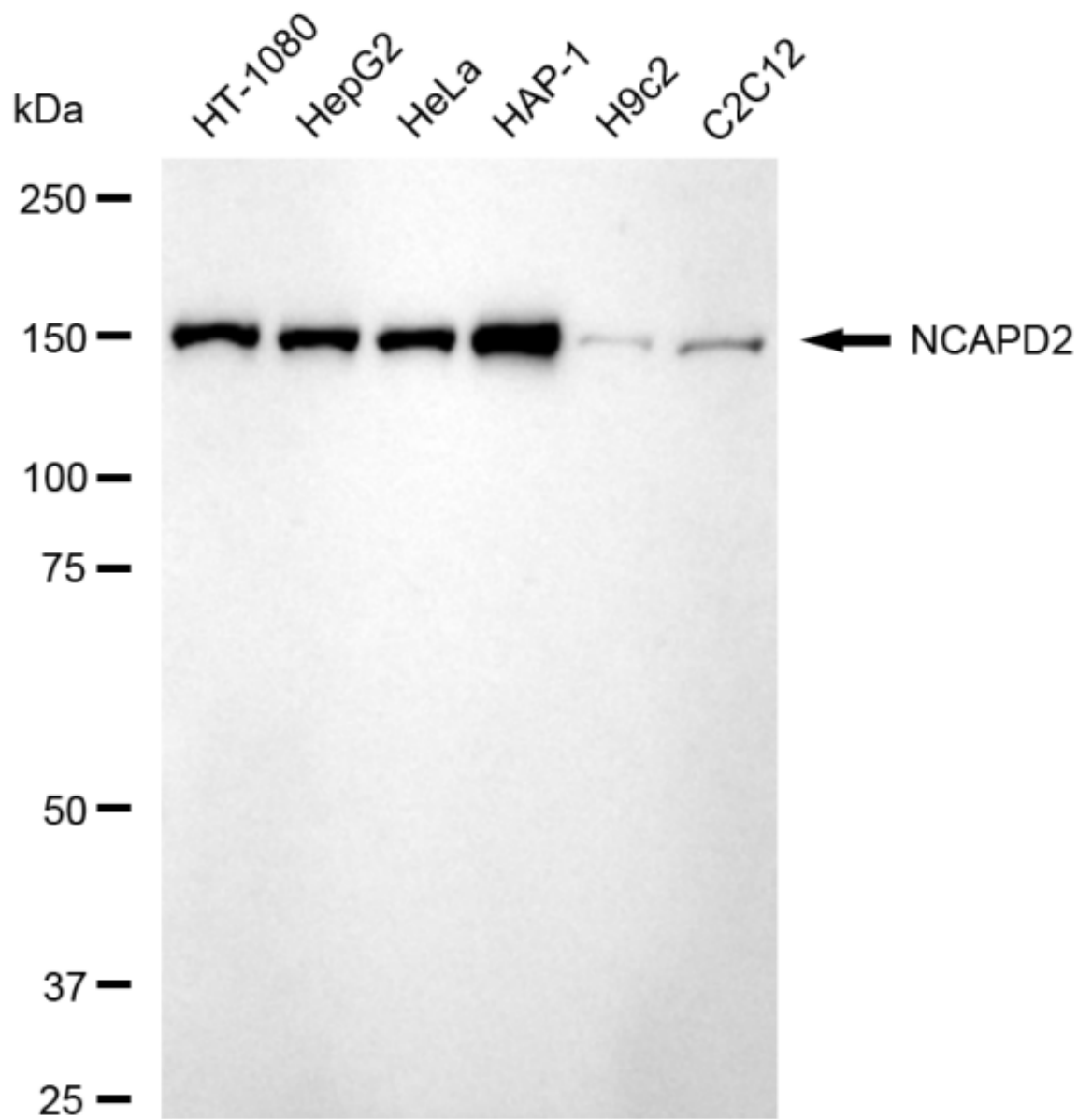
For general and specific antibody protocols please visit our website. Read all instructions before using this product.



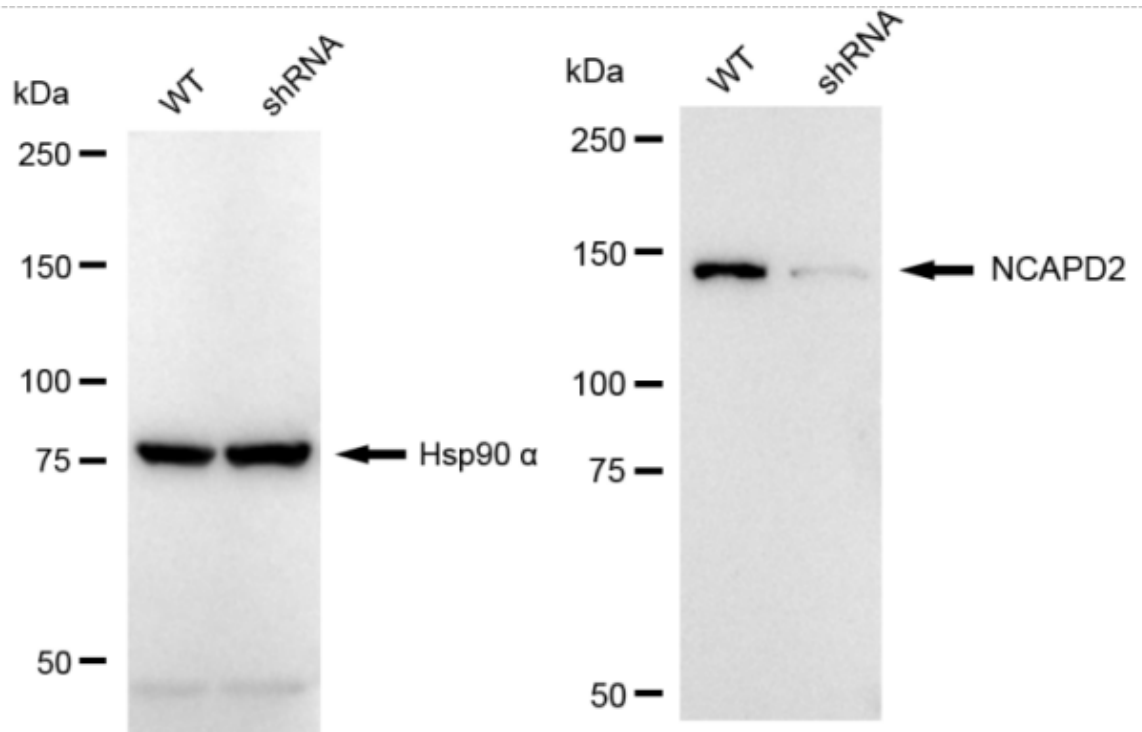
Flow cytometric analysis of NCAPD2 expression in HepG2 cells using NCAPD2 antibody 1:2,000. Green, isotype control; red, NCAPD2.



Immunocytochemical staining of HepG2 cells with anti-NCAPD2 antibody 1:1,000. Nuclei were stained blue with DAPI; NCAPD2 was stained magenta with Alexa Fluor® 647. Images were taken using Leica stellaris 5. Protein abundance based on laser Intensity and smart gain: Medium. Scale bar: 20  $\mu$ m.



Western blotting analysis using anti-NCAPD2 antibody 1:5,000 and HRP-conjugated goat anti-rabbit secondary antibody 1:20,000 respectively. Image was developed using FeQ™ ECL Substrate Kit .



Western blotting analysis using anti-NCAPD2 antibody 1:5,000 and HRP-conjugated goat anti-rabbit secondary antibody 1:20,000 respectively. Image was developed using NaQ™ ECL Substrate Kit .