



SunLong Biotech Co.,LTD  
Tel: 0086-571- 56623320 Fax:0086-571- 56623318  
E-mail:sales@sunlongbiotech.com  
www.sunlongbiotech.com

## **[KD-Validated] Anti-NAP1L1 Rabbit Monoclonal Antibody**

Cat No.: KD-10624

### **Aliases:**

Nucleosome Assembly Protein 1 Like 1; NRP; Nucleosome Assembly Protein 1-Like 1; NAP1L; NAP1; NAP-1-Related Protein; MGC23410; MGC8688; HSP22-Like Protein Interacting Protein; HNRP

### **Background:**

UniProt Entry: [P55209](#);NCBI Gene Entry: [4673](#)

### **Application Information**

Molecular Weight: Predicted, 45 kDa, observed, 52 kDa Clonality: Rabbit monoclonal antibody Clone ID: 24GB550 Species Reactivity: Human, Mouse, Rat Applications Tested: Western Blotting (WB), Flow Cytometry (FCM), Immunocytochemistry (IC)

### **Immunogen**

A synthesized peptide derived from human NAP1L1

### **Isotype**

Rabbit IgG

### **Storage Buffer**

Supplied in PBS (pH 7.4) containing 50% glycerol, and 0.02% sodium azide.

### Storage

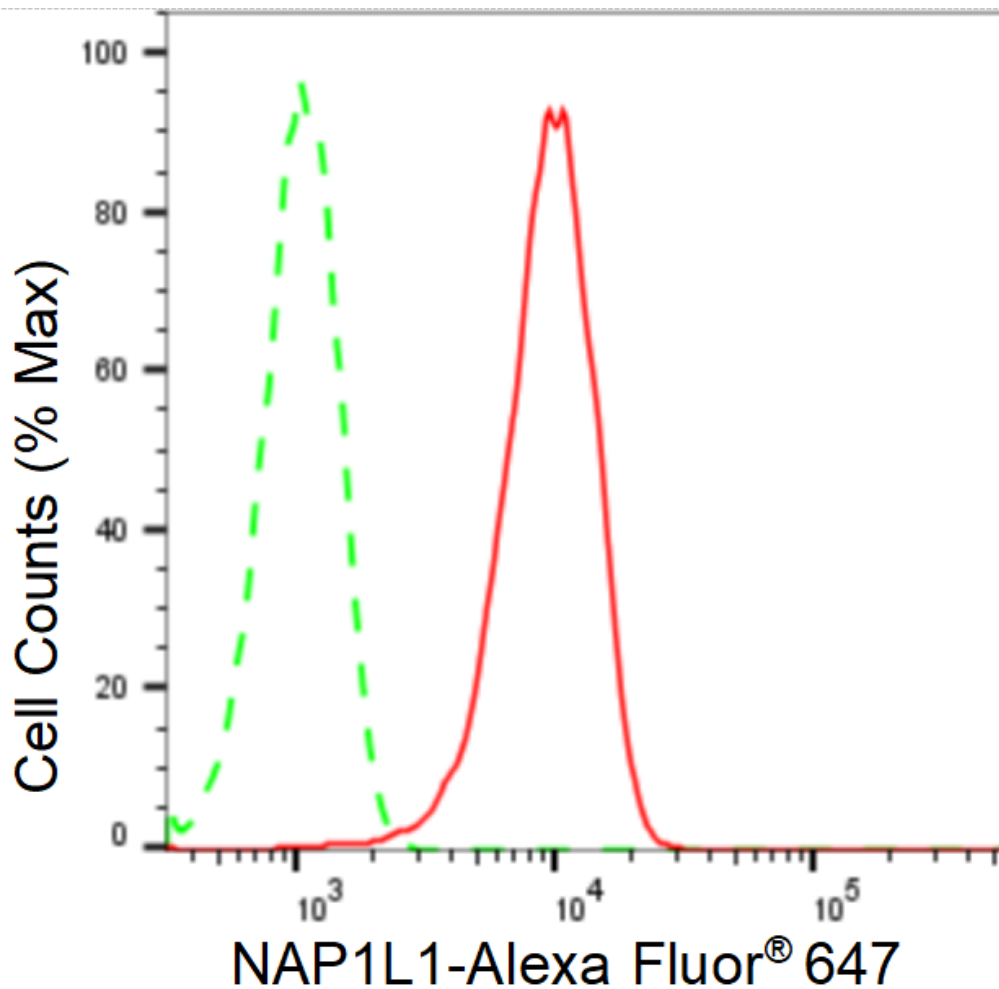
Store at -20 °C for one year.

### Recommended Dilutions

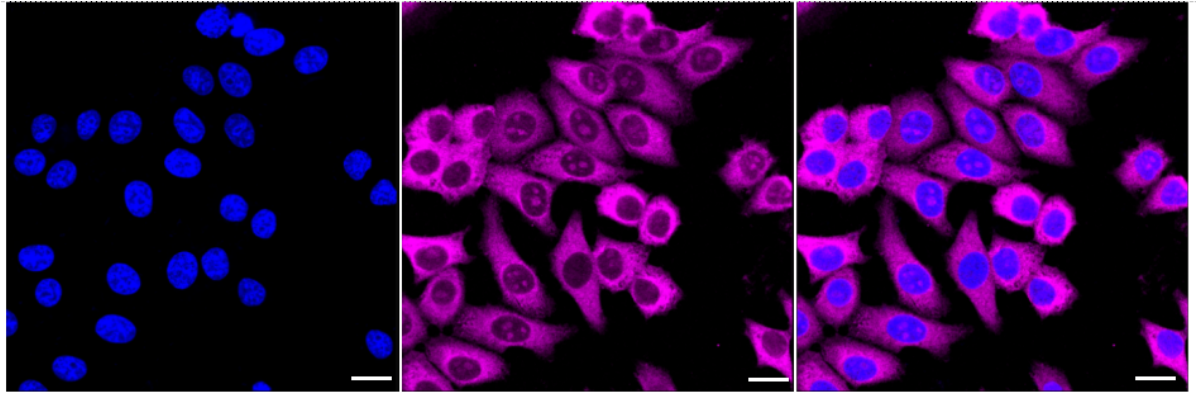
Western Blotting (WB): 1:1,000-1:5,000 Flow Cytometry (FCM): 1:2,000  
Immunocytochemistry (IC): 1:1,000

### Protocols

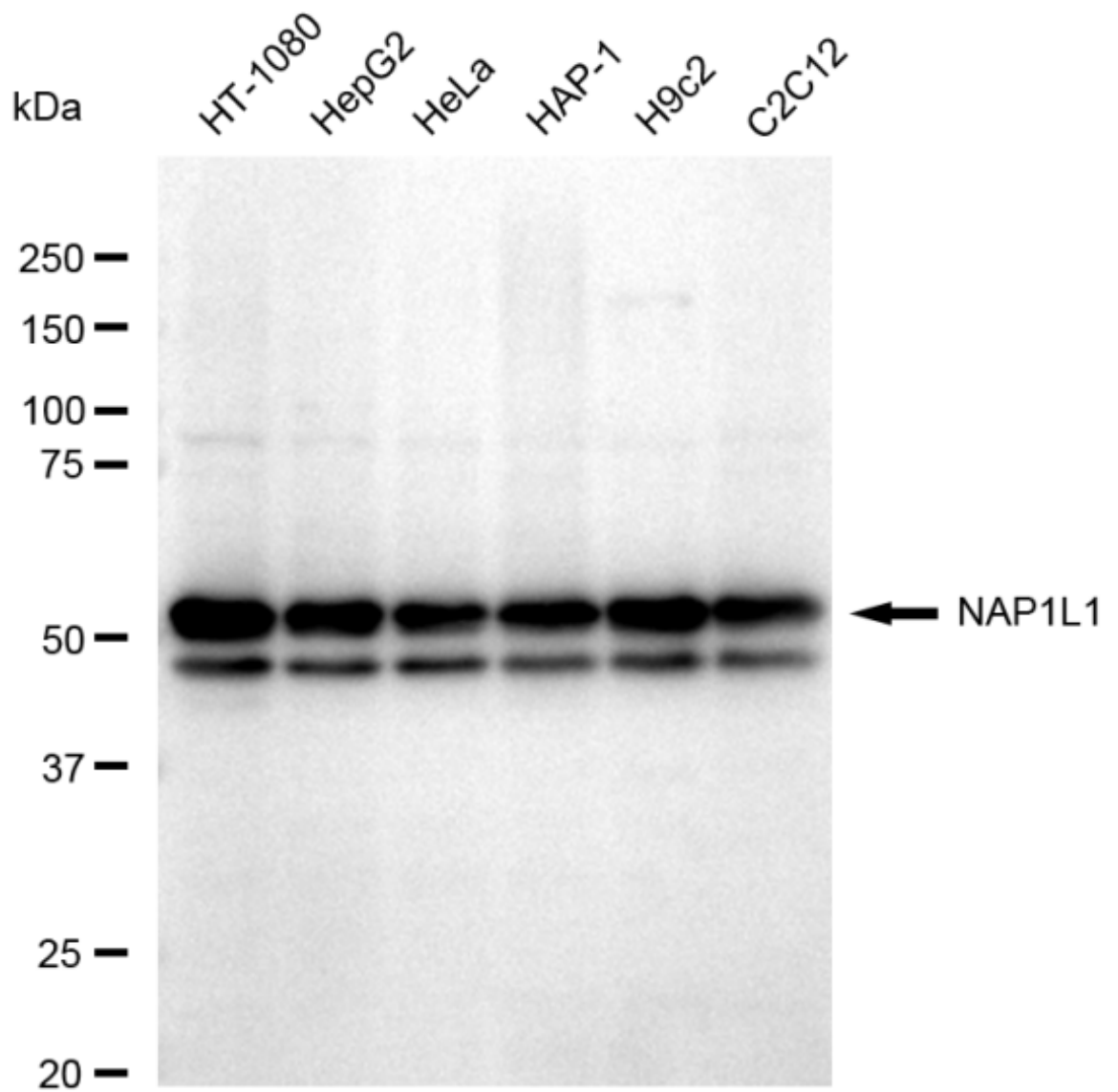
For general and specific antibody protocols please visit our website. Read all instructions before using this product.



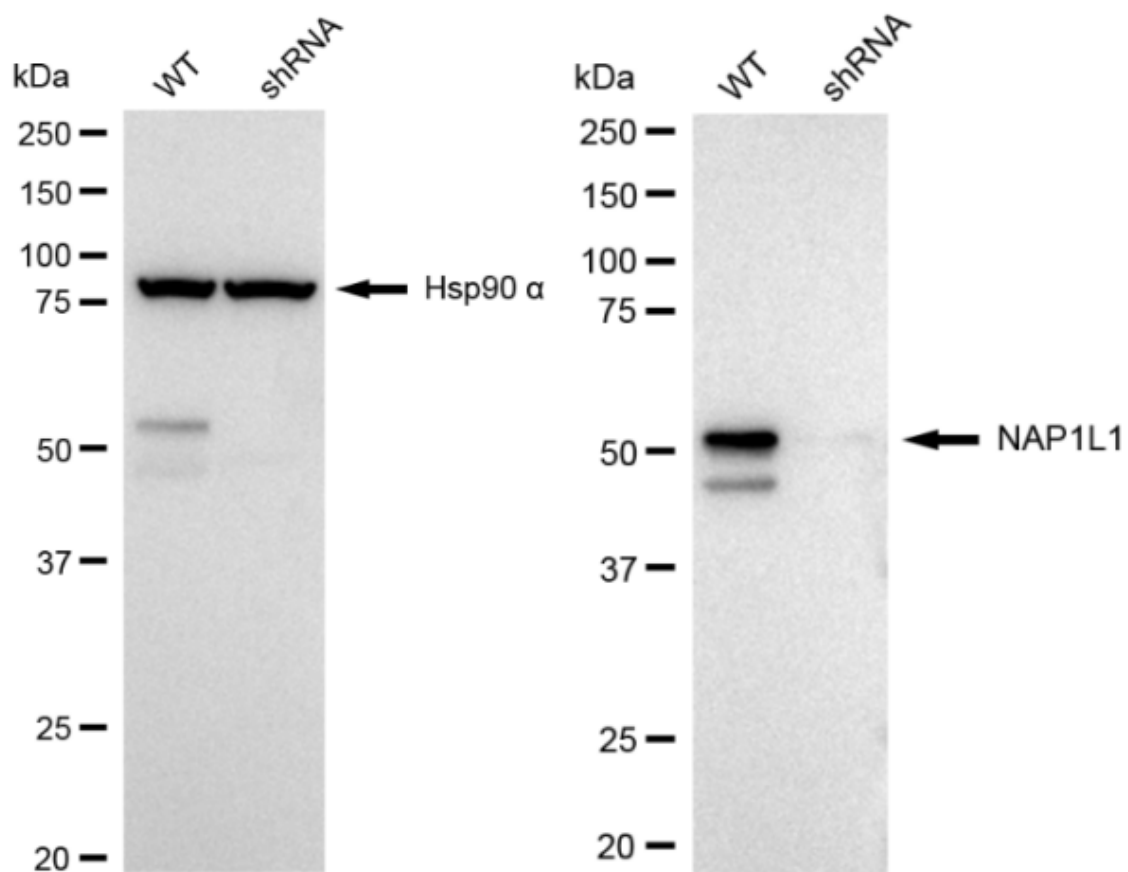
Flow cytometric analysis of NAP1L1 expression in HepG2 cells using NAP1L1 antibody 1:2,000. Green, isotype control; red, NAP1L1.



Immunocytochemical staining of HepG2 cells with anti-NAP1L1 antibody 1:1,000. Nuclei were stained blue with DAPI; NAP1L1 was stained magenta with Alexa Fluor® 647. Images were taken using Leica stellaris 5. Protein abundance based on laser Intensity and smart gain: High. Scale bar: 20  $\mu\text{m}$ .



Western blotting analysis using anti-NAP1L1 antibody 1:5,000 and HRP-conjugated goat anti-rabbit secondary antibody 1:20,000 respectively. Image was developed using FeQ™ ECL Substrate Kit .



Western blotting analysis using anti-NAP1L1 antibody 1:5,000 and HRP-conjugated goat anti-rabbit secondary antibody 1:20,000 respectively. Image was developed using NaQ™ ECL Substrate Kit .