



SunLong Biotech Co.,LTD
Tel: 0086-571- 56623320 Fax:0086-571- 56623318
E-mail:sales@sunlongbiotech.com
www.sunlongbiotech.com

[KD-Validated] Anti-Major Vault Protein Rabbit Monoclonal Antibody

Cat No.: KD-10623

Aliases:

Major Vault Protein; LRP; Lung Resistance-Related Protein; VAULT1; Testicular Secretory Protein Li 30

Background:

UniProt Entry: [Q14764](#);NCBI Gene Entry: [9961](#)

Application Information

Molecular Weight: Predicted, 99 kDa, observed, 110 kDa Clonality: Rabbit monoclonal antibody Clone ID: 24GB465 Species Reactivity: Human, Mouse, Rat Applications Tested: Western Blotting (WB), Flow Cytometry (FCM), Immunocytochemistry (IC)

Immunogen

A synthesized peptide derived from human MVP

Isotype

Rabbit IgG

Storage Buffer

Supplied in PBS (pH 7.4) containing 50% glycerol, and 0.02% sodium azide.

Storage

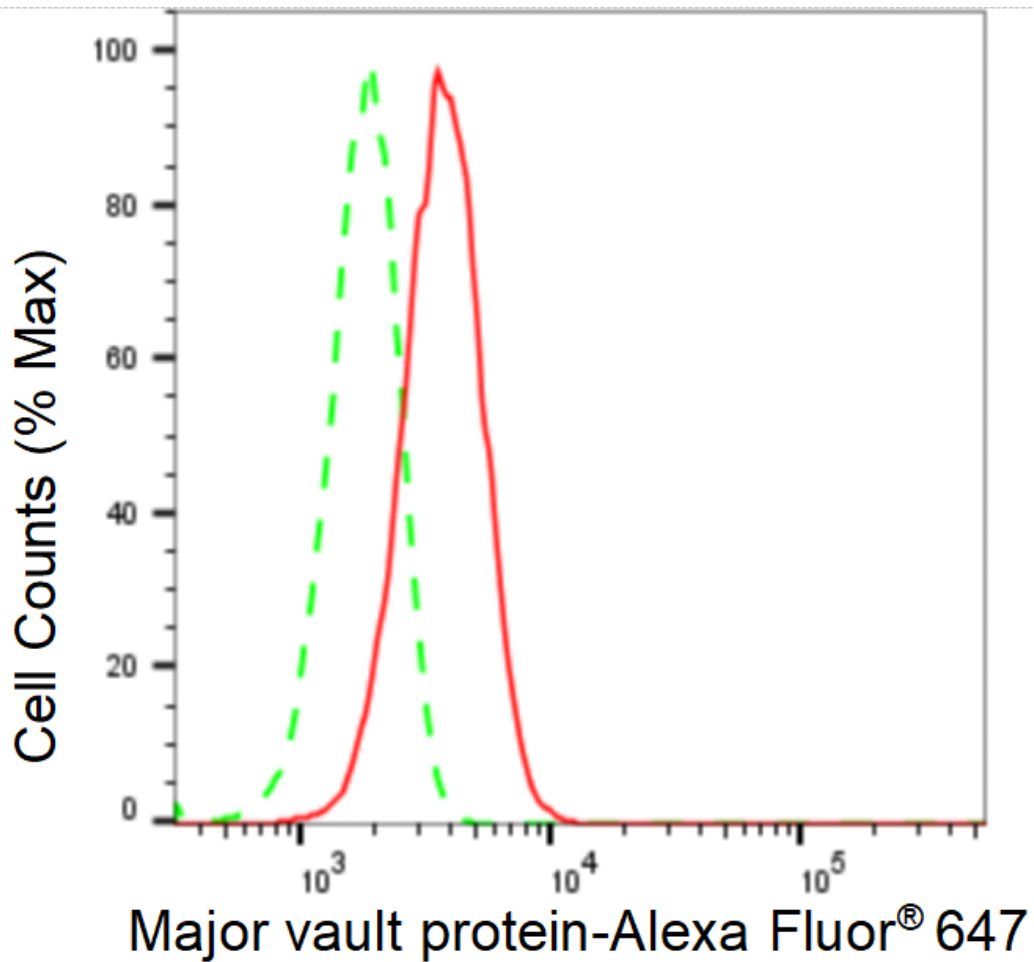
Store at -20 °C for one year.

Recommended Dilutions

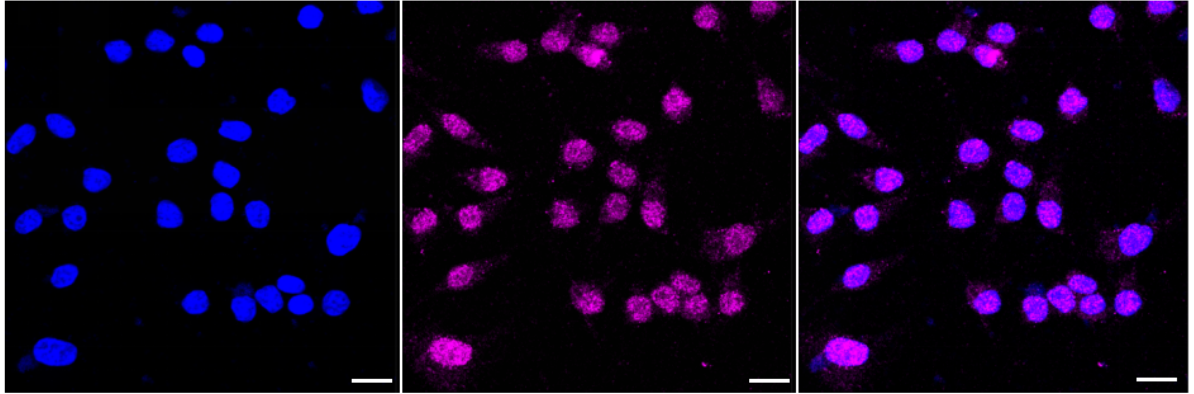
Western Blotting (WB): 1:1,000-1:5,000 Flow Cytometry (FCM): 1:2,000
Immunocytochemistry (IC): 1:1,000

Protocols

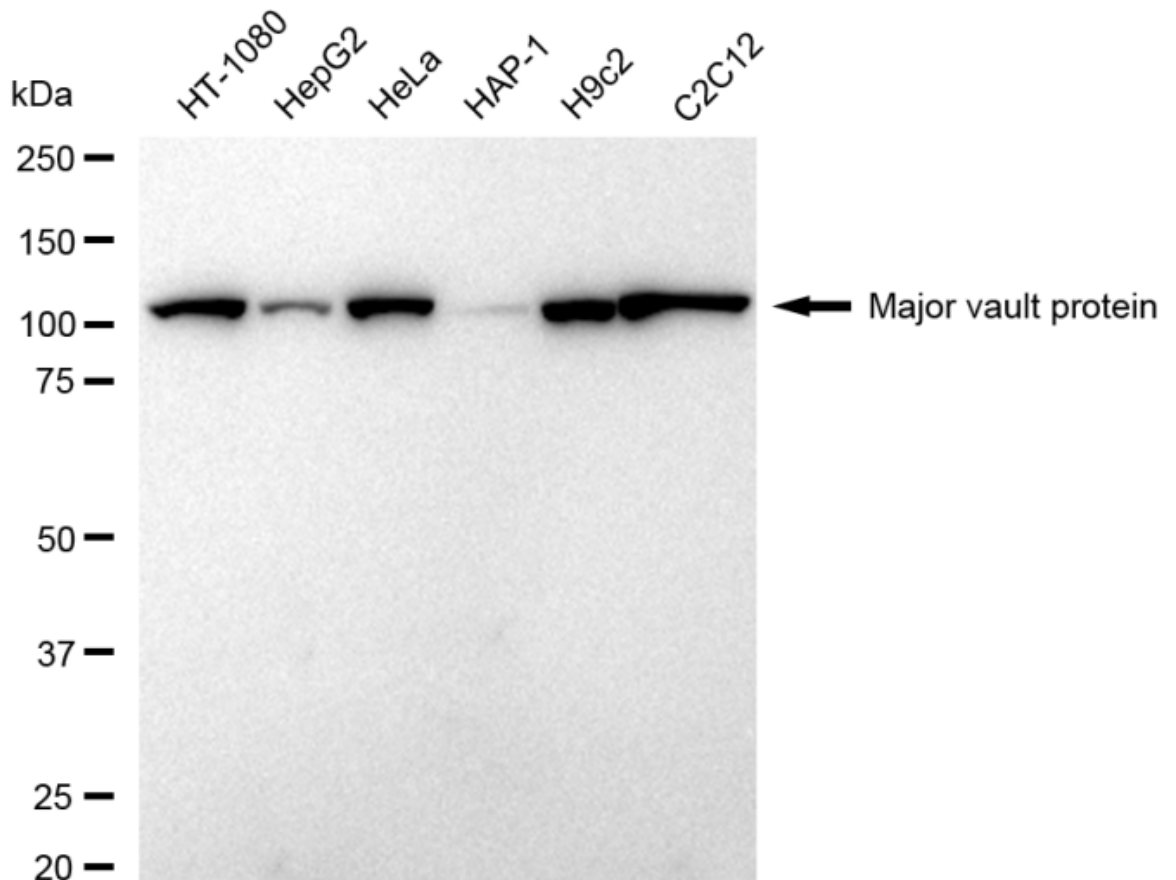
For general and specific antibody protocols please visit our website. Read all instructions before using this product.



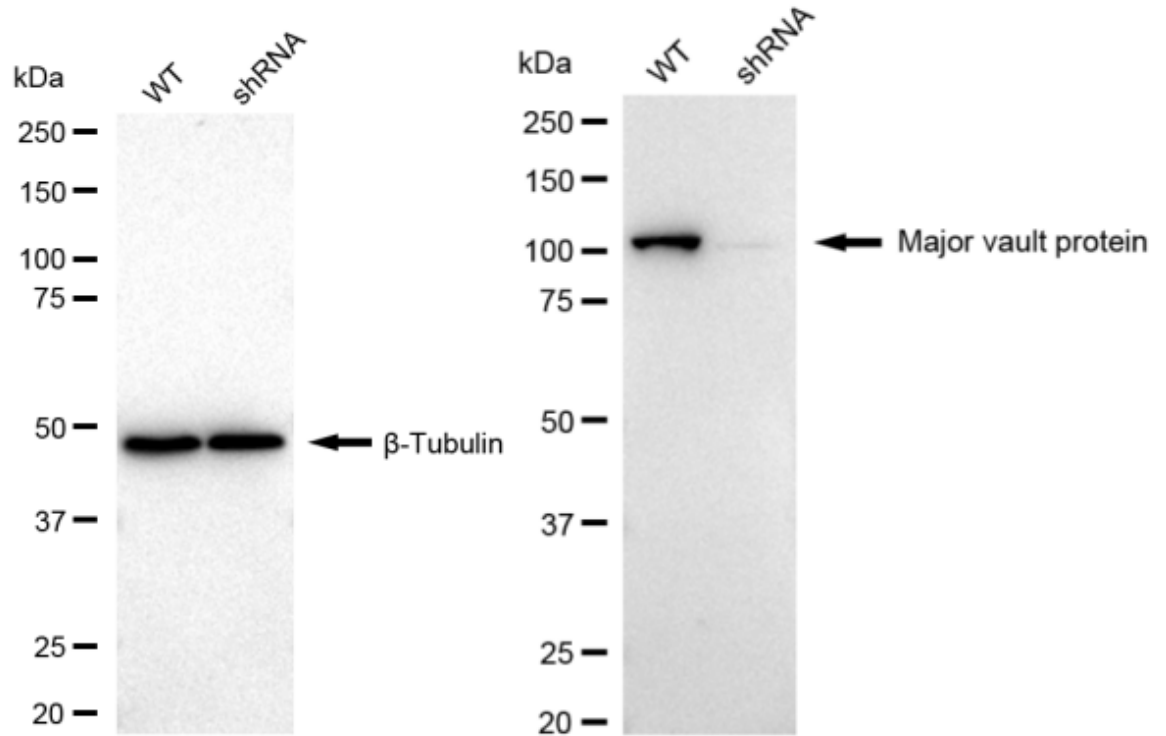
Flow cytometric analysis of Major vault protein expression in HeLa cells using Major vault protein antibody 1:2,000. Green, isotype control; red, Major vault protein.



Immunocytochemical staining of HeLa cells with anti-Major vault protein antibody 1:1,000. Nuclei were stained blue with DAPI; Major vault protein was stained magenta with Alexa Fluor® 647. Images were taken using Leica stellaris 5. Protein abundance based on laser Intensity and smart gain: Medium. Scale bar: 20 μ m.



Western blotting analysis using anti-Major vault protein antibody 1:5,000 and HRP-conjugated goat anti-rabbit secondary antibody 1:20,000 respectively. Image was developed using FeQ™ ECL Substrate Kit .



Western blotting analysis using anti-Major Vault Protein antibody 1:5,000 and HRP-conjugated goat anti-rabbit secondary antibody 1:20,000 respectively. Image was developed using NaQ™ ECL Substrate Kit .