



SunLong Biotech Co.,LTD  
Tel: 0086-571- 56623320 Fax:0086-571- 56623318  
E-mail:sales@sunlongbiotech.com  
www.sunlongbiotech.com

## **[KD-Validated] Anti-Phospho-mTOR (S2448) Rabbit Monoclonal Antibody**

Cat No.: KD-10620

### **Aliases:**

Mechanistic Target Of Rapamycin Kinase; RAFT1; RAPT1; Rapamycin And FKBP12 Target 1; Mammalian Target Of Rapamycin; FRAP1; FRAP2; FRAP; FK506-Binding Protein 12-Rapamycin Complex-Associated Protein 1; Mechanistic Target Of Rapamycin (Serine/Threonine Kinase); FK506 Binding Protein 12-Rapamycin Associated Protein 2; FKBP12-Rapamycin Complex-Associated Protein 1; Serine/Threonine-Protein Kinase MTOR; Rapamycin Associated Protein FRAP2; FKBP-Rapamycin Associated Protein; Mechanistic Target Of Rapamycin; Rapamycin Target Protein 1; FLJ44809; DJ576K7.1 (FK506 Binding Protein 12-Rapamycin Associated Protein 1); FK506 Binding Protein 12-Rapamycin Associated Protein 1; FKBP12-Rapamycin Complex-Associated Protein; Rapamycin Target Protein; EC 2.7.11.1; MTOR; SKS

### **Background:**

UniProt Entry: [P42345](#);NCBI Gene Entry: [2475](#)

### **Application Information**

Molecular Weight: Predicted, 289 kDa, observed, 289 kDa Clonality: Rabbit monoclonal antibody Clone ID: 24GB330 Species Reactivity: Human, Mouse, Rat Applications Tested: Western Blotting (WB), Flow Cytometry (FCM), Immunocytochemistry (IC)

### **Immunogen**

A synthesized peptide derived from human Phospho-mTOR (S2448)

### **Isotype**

Rabbit IgG

**Storage Buffer**

Supplied in PBS (pH 7.4) containing 50% glycerol, and 0.02% sodium azide.

**Storage**

Store at -20 °C for one year.

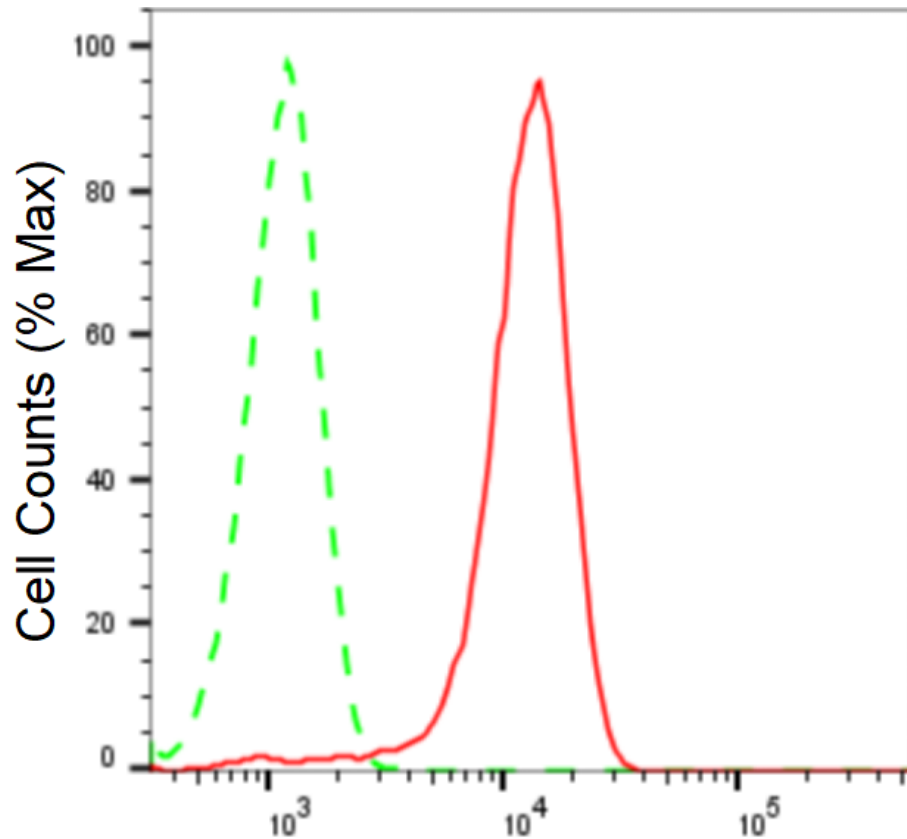
**Recommended Dilutions**

Western Blotting (WB): 1:1,000-1:5,000 Flow Cytometry (FCM): 1:2,000

Immunocytochemistry (IC): 1:1,000

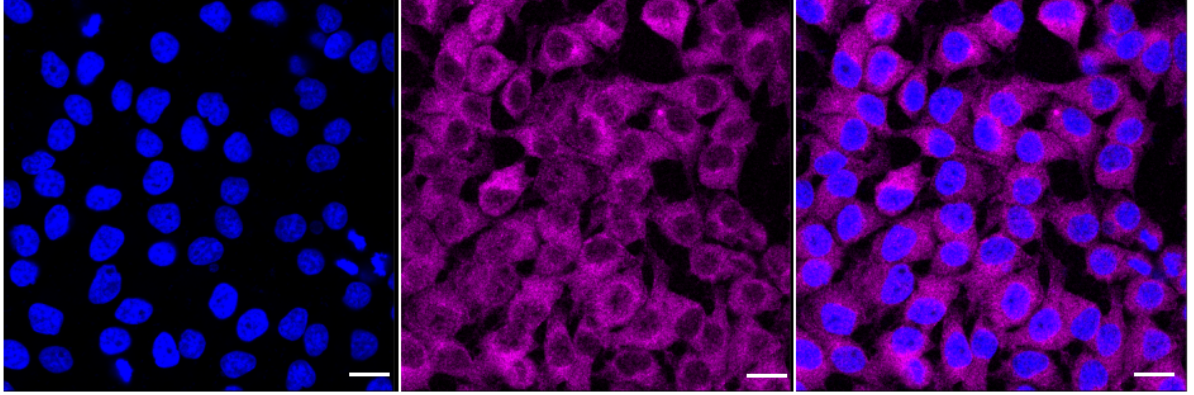
**Protocols**

For general and specific antibody protocols please visit our website. Read all instructions before using this product.

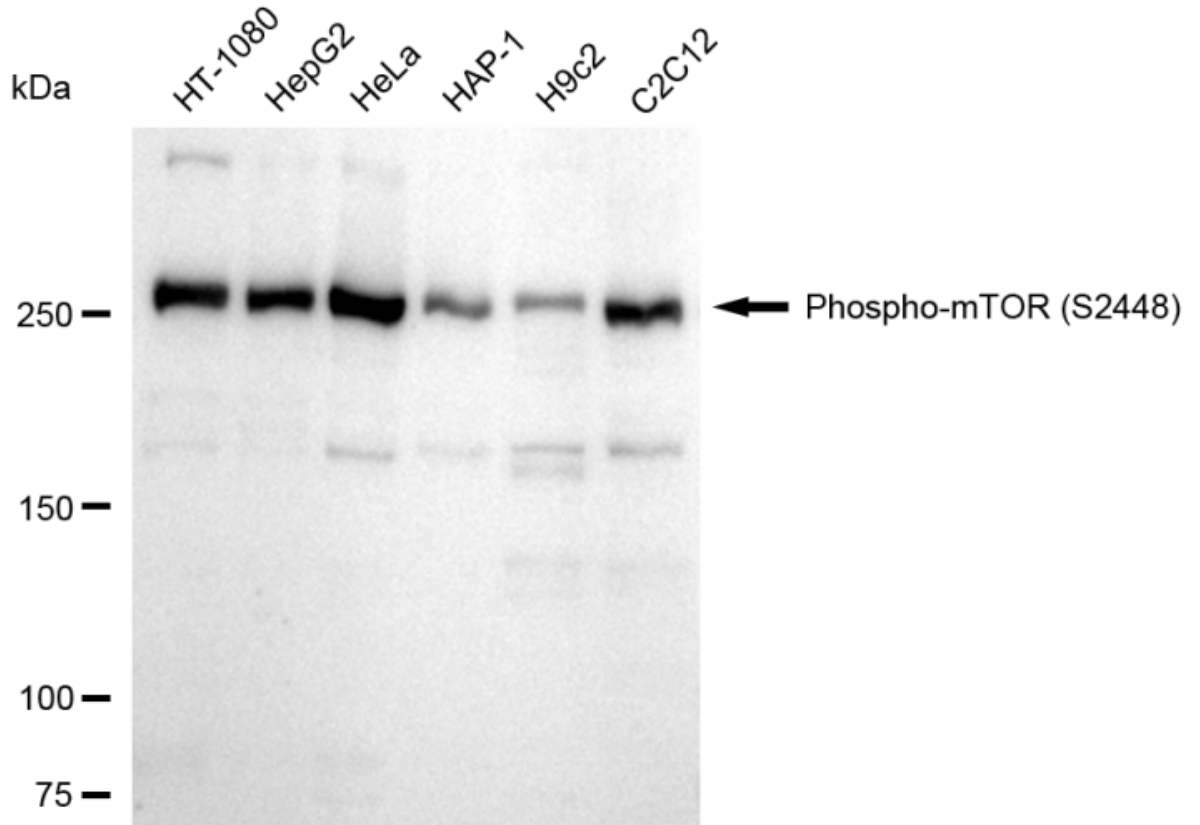


Phospho-mTOR (S2448)-Alexa Fluor<sup>®</sup> 647

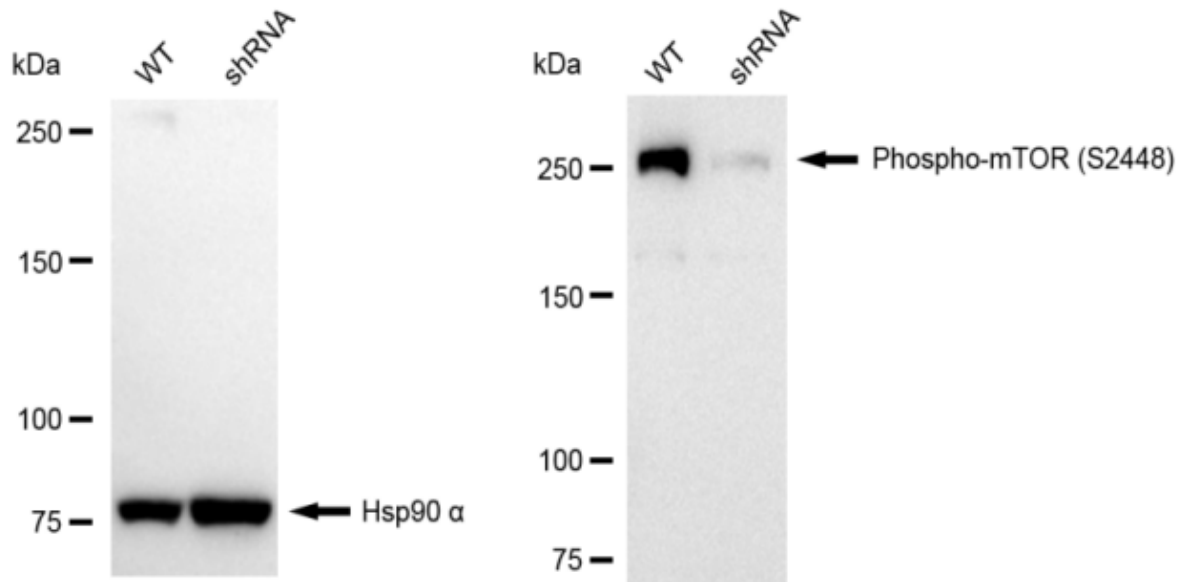
Flow cytometric analysis of Phospho-mTOR (S2448) expression in HeLa cells using Phospho-mTOR (S2448) antibody 1:2,000. Green, isotype control; red, Phospho-mTOR (S2448).



Immunocytochemical staining of HeLa cells with anti-Phospho-mTOR (S2448) antibody 1:1,000. Nuclei were stained blue with DAPI; Phospho-mTOR (S2448) was stained magenta with Alexa Fluor® 647. Images were taken using Leica stellaris 5. Protein abundance based on laser Intensity and smart gain: Medium. Scale bar: 20  $\mu$ m.



Western blotting analysis using anti-Phospho-mTOR (S2448) antibody 1:5,000 and HRP-conjugated goat anti-rabbit secondary antibody 1:20,000 respectively. Image was developed using FeQ™ ECL Substrate Kit .



Western blotting analysis using anti-Phospho-mTOR (S2448) antibody 1:5,000 and HRP-conjugated goat anti-rabbit secondary antibody 1:20,000 respectively. Image was developed using NaQ™ ECL Substrate Kit .