



SunLong Biotech Co.,LTD
Tel: 0086-571- 56623320 Fax:0086-571- 56623318
E-mail:sales@sunlongbiotech.com
www.sunlongbiotech.com

[KD-Validated] Anti-Methylthioadenosine phosphorylase Rabbit Monoclonal Antibody

Cat No.: KD-10617

Aliases:

MTAP; Methylthioadenosine Phosphorylase; MSAP; S-Methyl-5'-Thioadenosine Phosphorylase; 5'-Methylthioadenosine Phosphorylase; MTA Phosphorylase; MTAPase; C86fus; Epididymis Secretory Sperm Binding Protein; Epididymis Luminal Protein 249; MeSAAdo Phosphorylase; EC 2.4.2.28; HEL-249; DMSMFH; C86FUS; DMSFH; LGMBF; BDMF

Background:

UniProt Entry: [Q13126](#);NCBI Gene Entry: [4507](#)

Application Information

Molecular Weight: Predicted, 31 kDa, observed, 29 kDa Clonality: Rabbit monoclonal antibody Clone ID: 23GB4560 Species Reactivity: Human, Mouse, Rat Applications Tested: Western Blotting (WB), Flow Cytometry (FCM), Immunocytochemistry (IC)

Immunogen

A synthesized peptide derived from human MTAP

Isotype

Rabbit IgG

Storage Buffer

Supplied in PBS (pH 7.4) containing 50% glycerol, and 0.02% sodium azide.

Storage

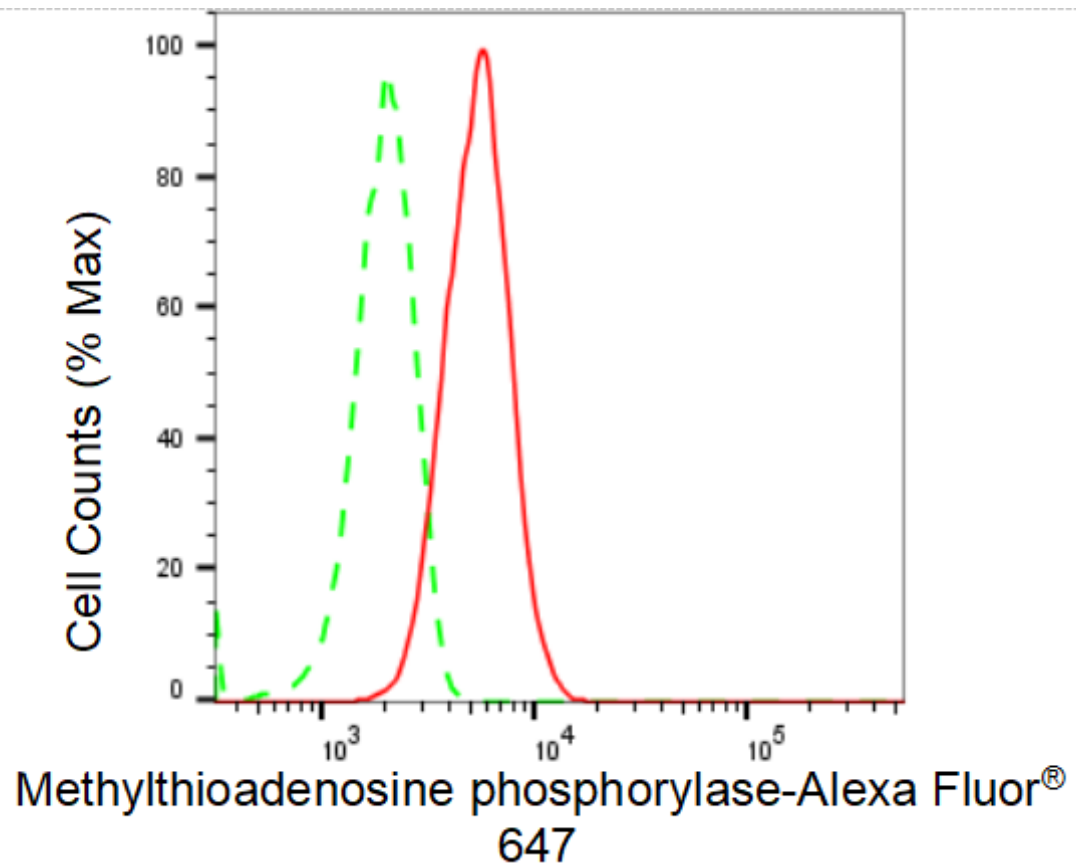
Store at -20 °C for one year.

Recommended Dilutions

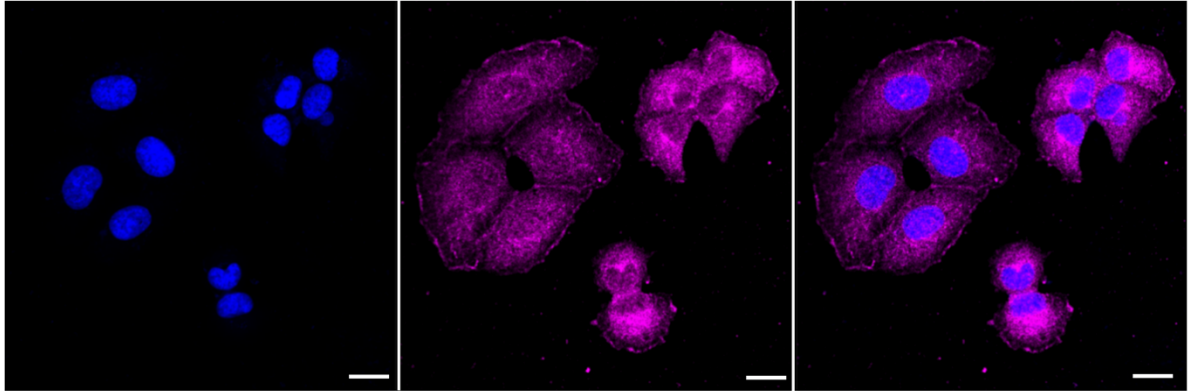
Western Blotting (WB): 1:1,000-1:5,000 Flow Cytometry (FCM): 1:2,000
Immunocytochemistry (IC): 1:1,000

Protocols

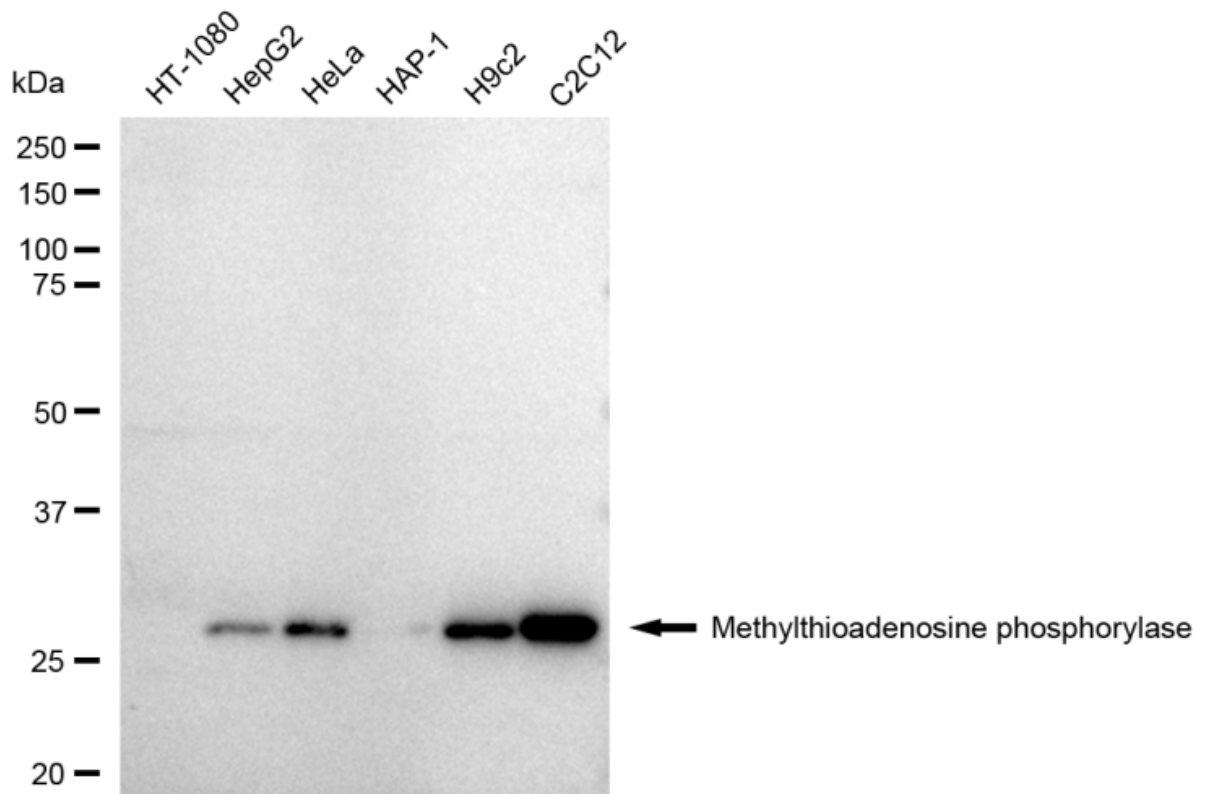
For general and specific antibody protocols please visit our website. Read all instructions before using this product.



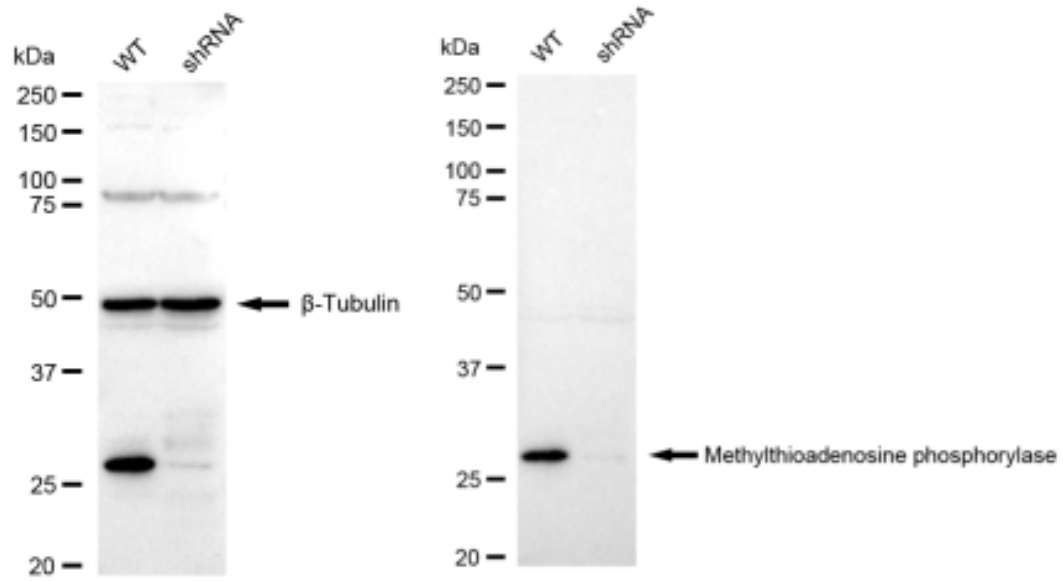
Flow cytometric analysis of Methylthioadenosine phosphorylase expression in HT-1080 cells using Methylthioadenosine phosphorylase antibody 1:2,000. Green, isotype control; red, Methylthioadenosine phosphorylase.



Immunocytochemical staining of HT-1080 cells with Methylthioadenosine phosphorylase antibody 1:1,000. Nuclei were stained blue with DAPI; Methylthioadenosine phosphorylase was stained magenta with Alexa Fluor® 647. Images were taken using Leica stellaris 5. Protein abundance based on laser Intensity and smart gain: Medium. Scale bar: 20 μ m.



Western blotting analysis using anti-Methylthioadenosine phosphorylase antibody 1:5,000 and HRP-conjugated goat anti-rabbit secondary antibody 1:20,000 respectively. Image was developed using FeQ™ ECL Substrate Kit .



Western blotting analysis using anti-Methylthioadenosine phosphorylase antibody 1:5,000 and HRP-conjugated goat anti-rabbit secondary antibody 1:20,000 respectively. Image was developed using FeQ™ ECL Substrate Kit .