



SunLong Biotech Co.,LTD  
Tel: 0086-571- 56623320 Fax:0086-571- 56623318  
E-mail:sales@sunlongbiotech.com  
www.sunlongbiotech.com

## **[KD-Validated] Anti-Metastasis Associated 1 Family Member 2 Rabbit Monoclonal Antibody**

Cat No.: KD-10616

### **Aliases:**

Metastasis Associated 1 Family Member 2; MTA1L1; Metastasis Associated Gene Family, Member 2; P53 Target Protein In Deacetylase Complex; Metastasis-Associated Protein MTA2; Metastasis-Associated 1-Like 1; MTA1-L1 Protein; MTA1-L1; PID; Metastasis -Associated Gene 1-Like 1; Metastasis-Associated Protein 2

### **Background:**

UniProt Entry: [O94776](#);NCBI Gene Entry: [9219](#)

### **Application Information**

Molecular Weight: Predicted, 75 kDa, observed, 73 kDa Clonality: Rabbit monoclonal antibody Clone ID: 24GB400 Species Reactivity: Human Applications Used: Western Blotting (WB), Flow Cytometry (FCM)

### **Immunogen**

A synthesized peptide derived from human MTA2

### **Isotype**

Rabbit IgG

### **Storage Buffer**

Supplied in PBS (pH 7.4) containing 50% glycerol, and 0.02% sodium azide.

### Storage

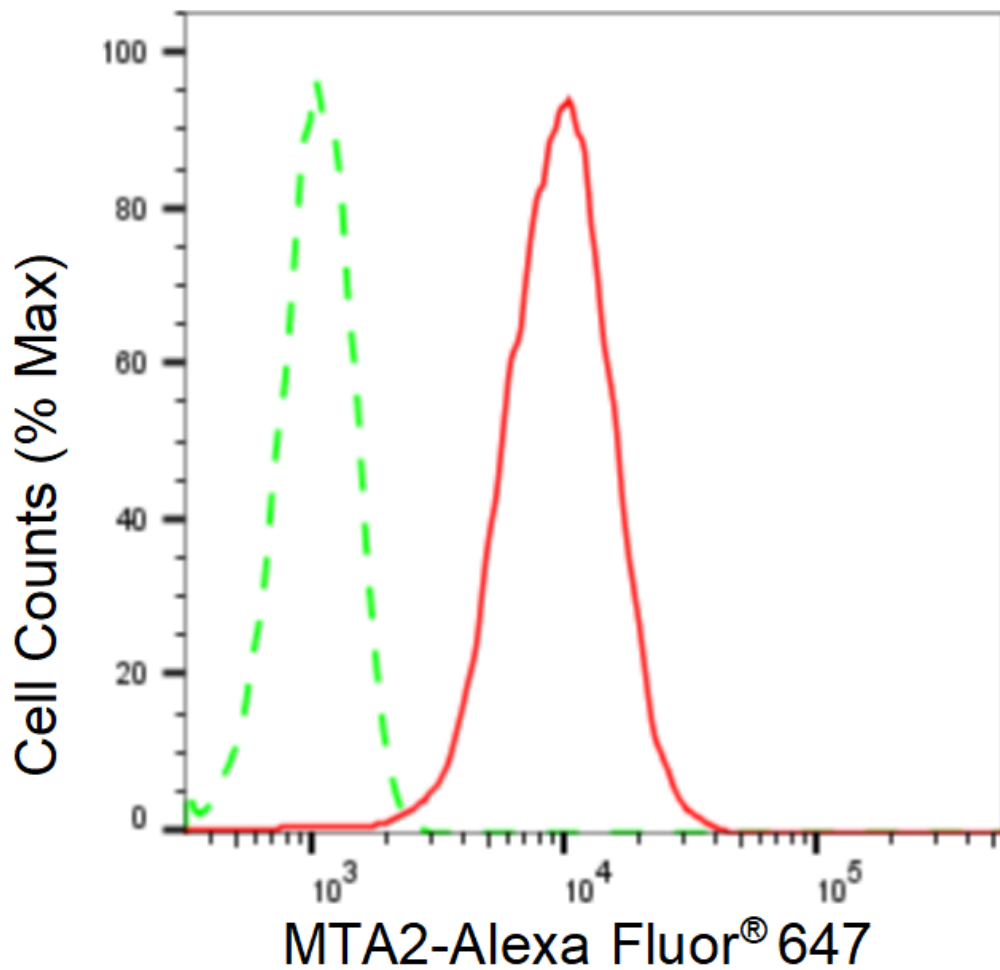
Store at -20 °C for one year.

### Recommended Dilutions

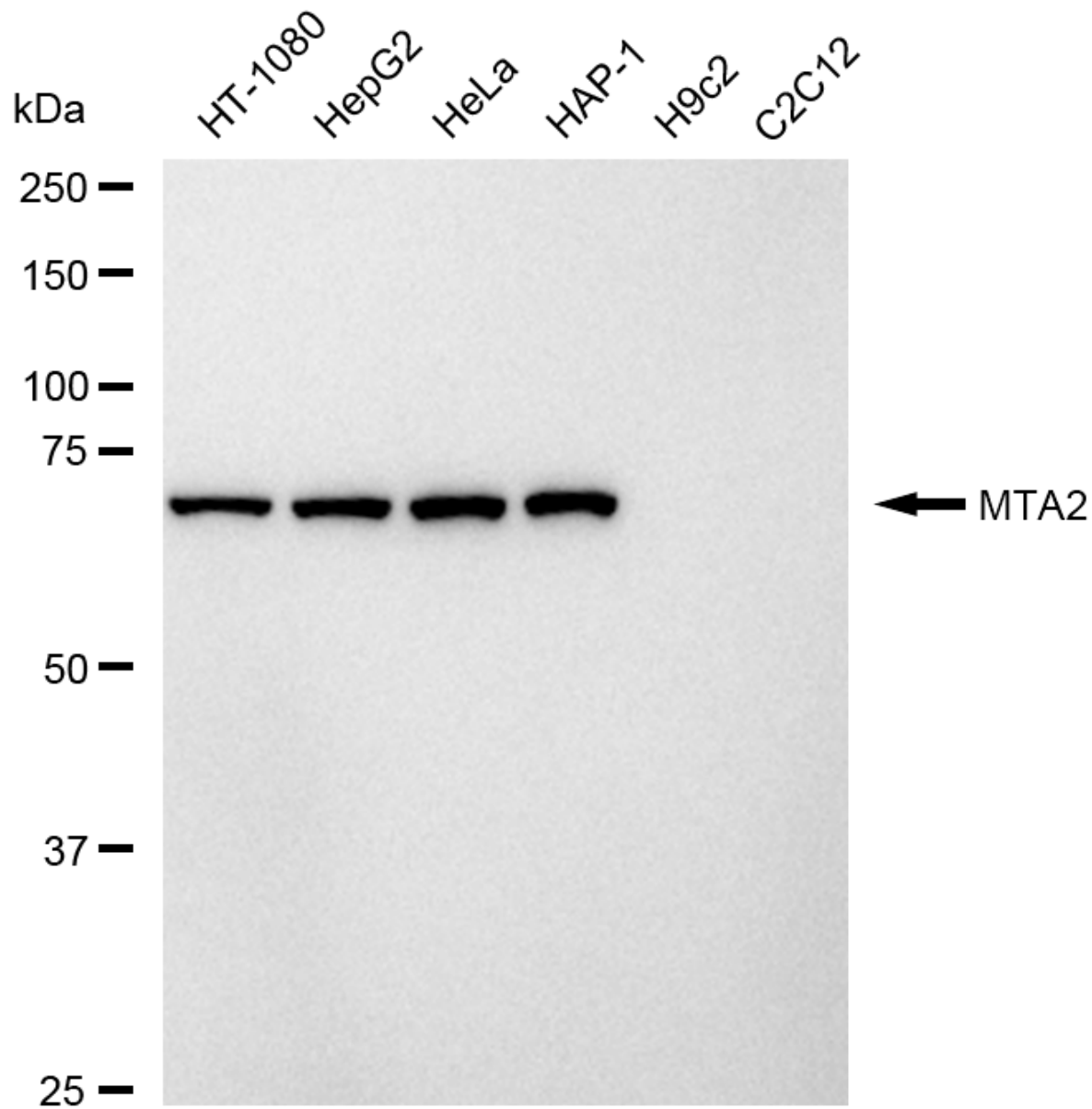
Western Blotting (WB): 1:1,000-1:5,000 Flow Cytometry (FCM): 1:2,000

### Protocols

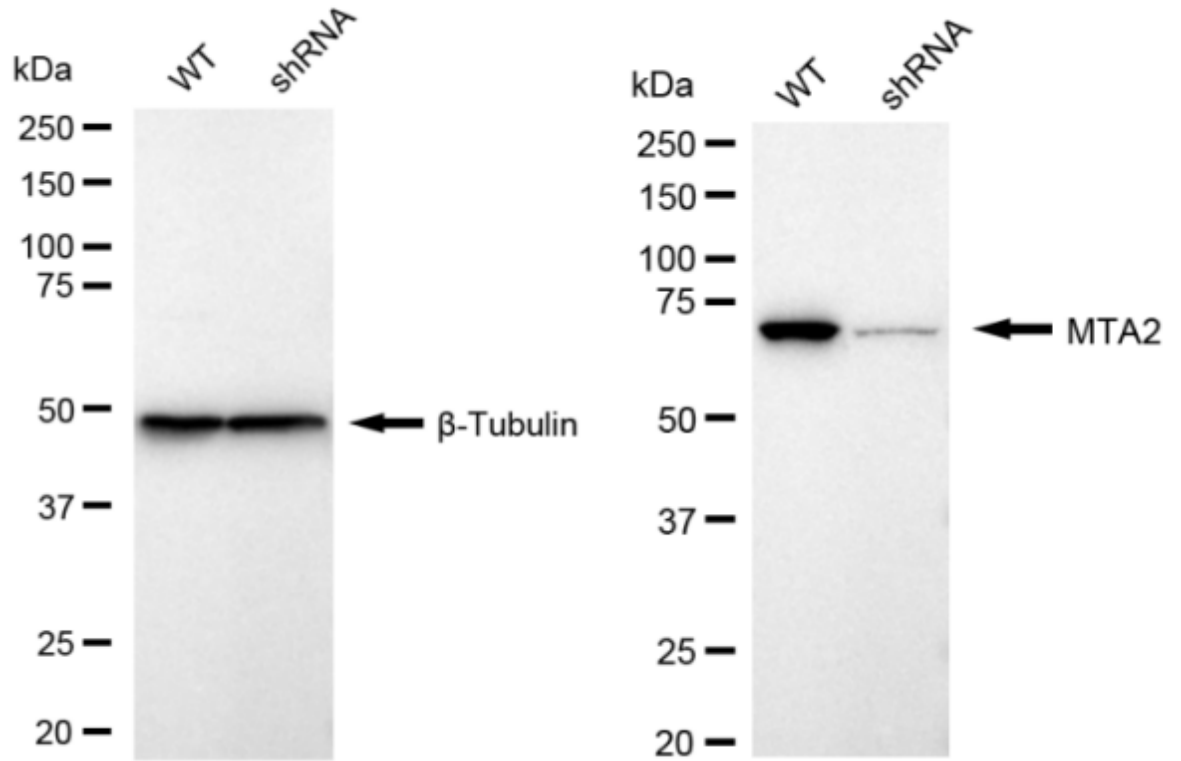
For general and specific antibody protocols please visit our website. Read all instructions before using this product.



Flow cytometric analysis of MTA2 expression in HepG2 cells using MTA2 antibody 1:2,000. Green, isotype control; red, MTA2.



Western blotting analysis using anti-MTA2 antibody 1:5,000 and HRP-conjugated goat anti-rabbit secondary antibody 1:20,000 respectively. Image was developed using FeQ™ ECL Substrate Kit .



Western blotting analysis using anti-MTA2 antibody 1:5,000 and HRP-conjugated goat anti-rabbit secondary antibody 1:20,000 respectively. Image was developed using NaQ™ ECL Substrate Kit .