



SunLong Biotech Co.,LTD  
Tel: 0086-571- 56623320 Fax:0086-571- 56623318  
E-mail:sales@sunlongbiotech.com  
www.sunlongbiotech.com

## **[KD-Validated] Anti-Mitochondrial Ribosomal Protein S15 Rabbit Monoclonal Antibody**

Cat No.: KD-10613

### **Aliases:**

Mitochondrial Ribosomal Protein S15; 28S Ribosomal Protein S15, Mitochondrial; Small Ribosomal Subunit Protein US15m; FLJ11564; MRP-S15; RPMS15; US15m; S15mt; Mitochondrial Small Ribosomal Subunit Protein US15m; MPR-S15; DC37

### **Background:**

UniProt Entry: [P82914](#);NCBI Gene Entry: [64960](#)

### **Application Information**

Molecular Weight: Predicted, 30 kDa, observed, 22 kDa Clonality: Rabbit monoclonal antibody Clone ID: 24GB70 Species Reactivity: Human Applications: Western Blotting (WB), Flow Cytometry (FCM), Immunocytochemistry (IC)

### **Immunogen**

A synthesized peptide derived from human MRPS15

### **Isotype**

Rabbit IgG

### **Storage Buffer**

Supplied in PBS (pH 7.4) containing 50% glycerol, and 0.02% sodium azide.

### Storage

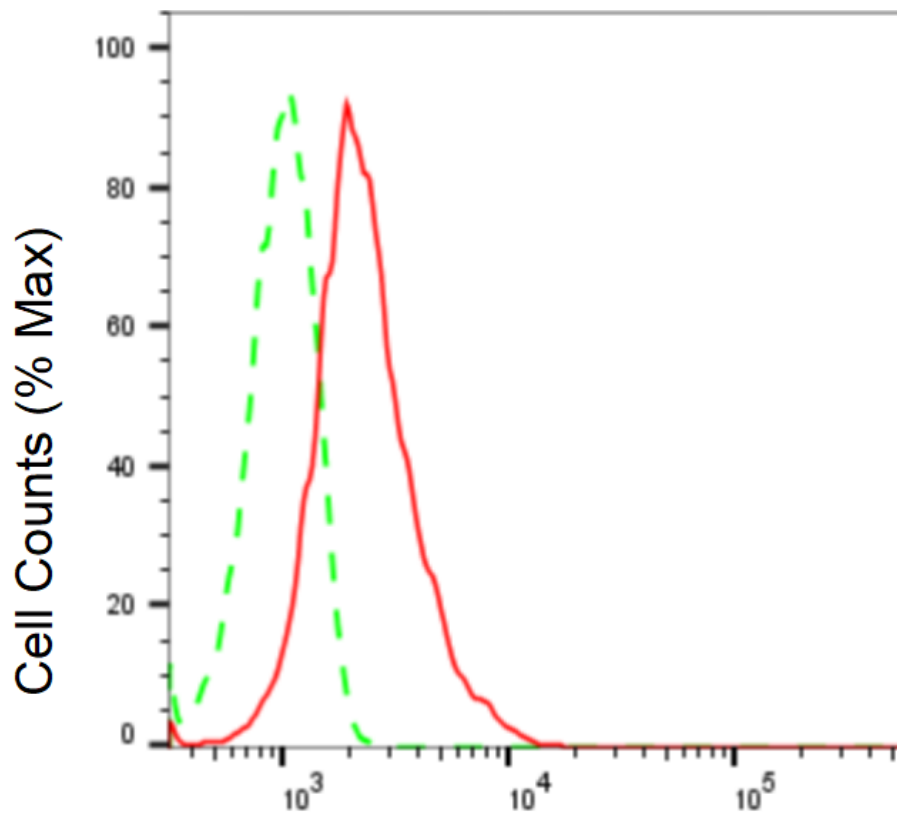
Store at -20 °C for one year.

### Recommended Dilutions

Western Blotting (WB): 1:1,000-1:5,000 Flow Cytometry (FCM): 1:2,000  
Immunocytochemistry (IC): 1:1,000

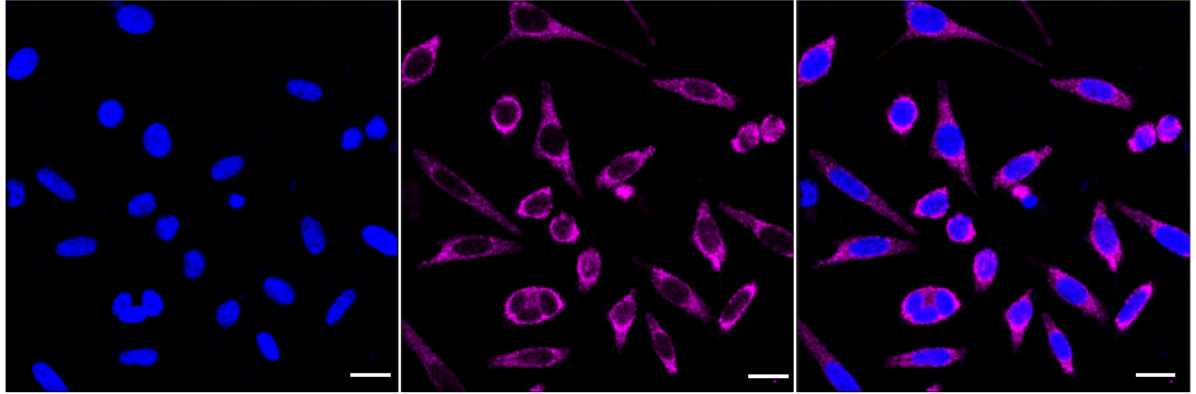
### Protocols

For general and specific antibody protocols please visit our website. Read all instructions before using this product.

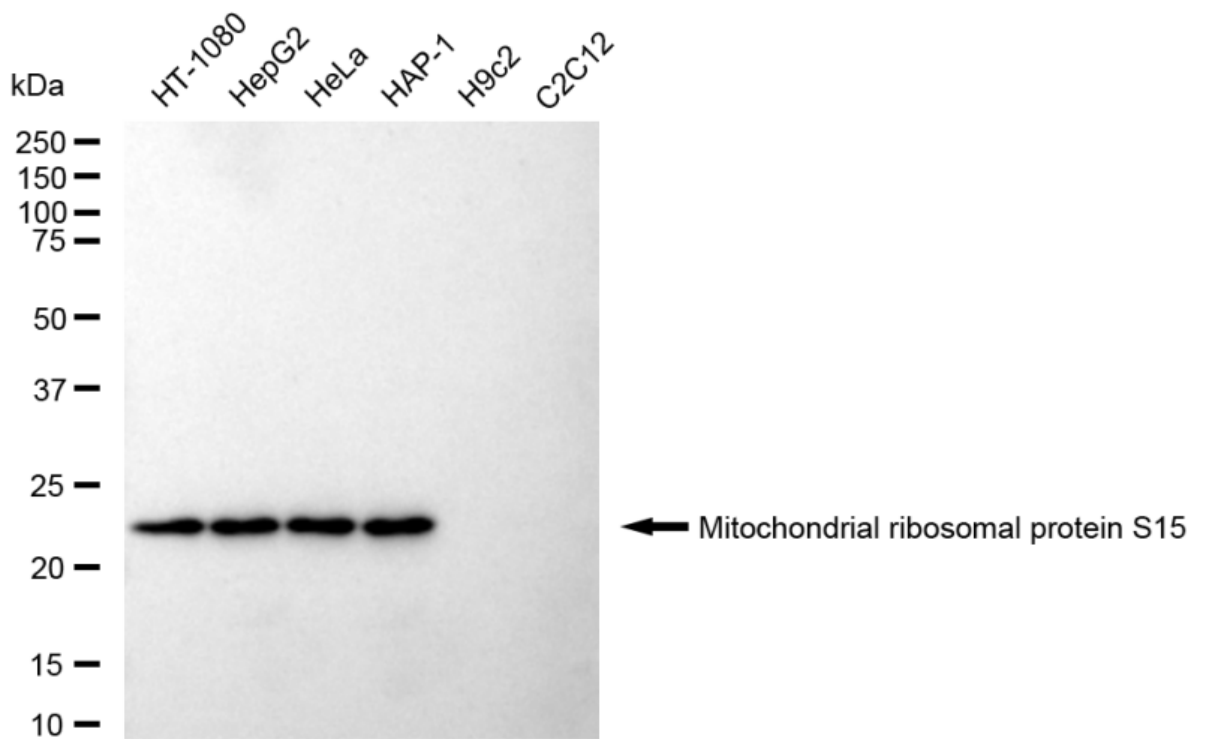


Mitochondrial ribosomal protein S15-Alexa Fluor®  
647

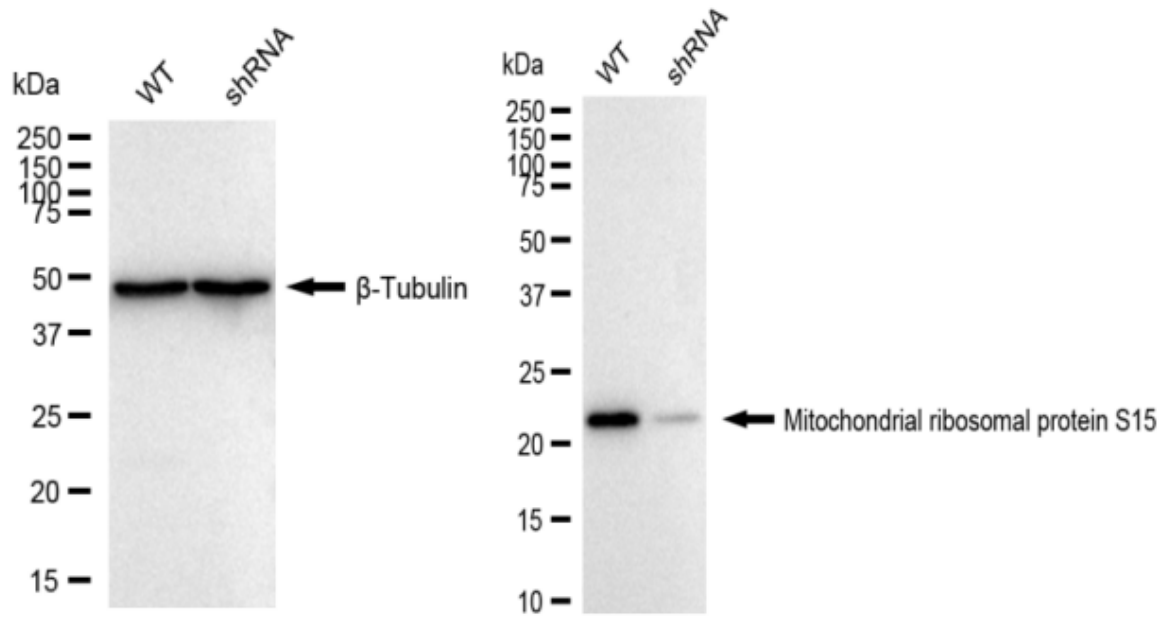
Flow cytometric analysis of Mitochondrial ribosomal protein S15 expression in HepG2 cells using Mitochondrial ribosomal protein S15 antibody 1:2,000. Green, isotype control; red, Mitochondrial ribosomal protein S15.



Immunocytochemical staining of HepG2 cells with anti-Mitochondrial ribosomal protein S15 antibody 1:1,000. Nuclei were stained blue with DAPI; Mitochondrial ribosomal protein S15 was stained magenta with Alexa Fluor® 647. Images were taken using Leica stellaris 5. Protein abundance based on laser Intensity and smart gain: Medium. Scale bar: 20  $\mu$ m.



Western blotting analysis using anti-Mitochondrial ribosomal protein S15 antibody 1:5,000 and HRP-conjugated goat anti-rabbit secondary antibody 1:20,000 respectively. Image was developed using FeQ™ ECL Substrate Kit .



Western blotting analysis using anti-Mitochondrial ribosomal protein S15 antibody 1:5,000 and HRP-conjugated goat anti-rabbit secondary antibody 1:20,000 respectively. Image was developed using NaQ™ ECL Substrate Kit .