



SunLong Biotech Co.,LTD
Tel: 0086-571- 56623320 Fax:0086-571- 56623318
E-mail:sales@sunlongbiotech.com
www.sunlongbiotech.com

[KD-Validated] Anti-Mov10 RNA Helicase Rabbit Monoclonal Antibody

Cat No.: KD-10611

Aliases:

Mov10 RNA Helicase; Mov10 RISC Complex RNA Helicase; FSAP113; Gb110; Functional Spliceosome-Associated Protein 113; Moloney Leukemia Virus 10 Protein; Armitage Homolog; Helicase MOV-10; MGC2948; Mov10, Moloney Leukemia Virus 10, Homolog (Mouse); Mov10 (Moloney Leukemia Virus 10, Mouse) Homolog; Mov10, Moloney Leukemia Virus 10, Homolog; Putative Helicase MOV-10; EC 3.6.4.13; KIAA1631; EC 3.6.1

Background:

UniProt Entry: [Q9HCE1](#);NCBI Gene Entry: [4343](#)

Application Information

Molecular Weight: Predicted, 114 kDa, observed, 114 kDa Clonality: Rabbit monoclonal antibody Clone ID: 24GB575 Species Reactivity: Human, Mouse, Rat Applications Tested: Western Blotting (WB), Flow Cytometry (FCM), Immunocytochemistry (IC)

Immunogen

A synthesized peptide derived from human Mov10

Isotype

Rabbit IgG

Storage Buffer

Supplied in PBS (pH 7.4) containing 50% glycerol, and 0.02% sodium azide.

Storage

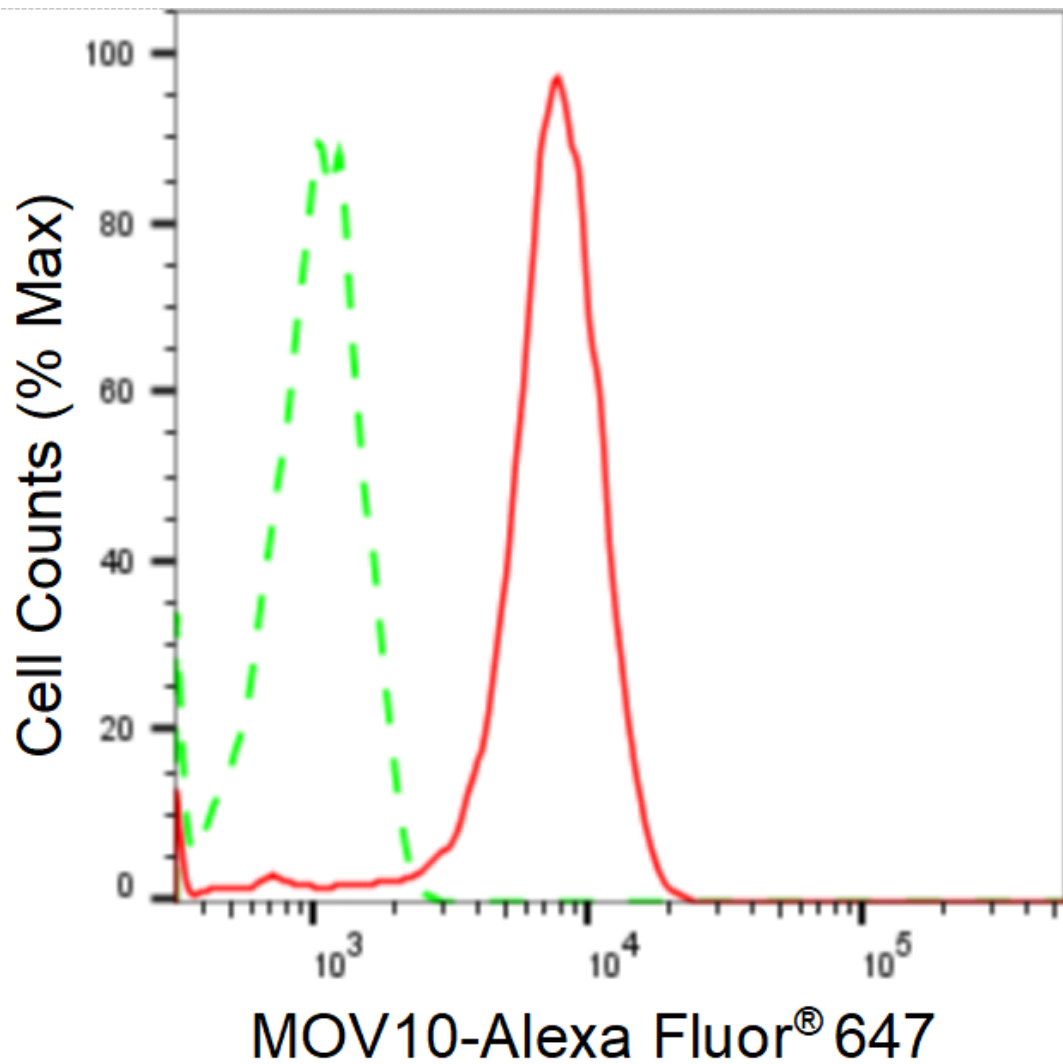
Store at -20 °C for one year.

Recommended Dilutions

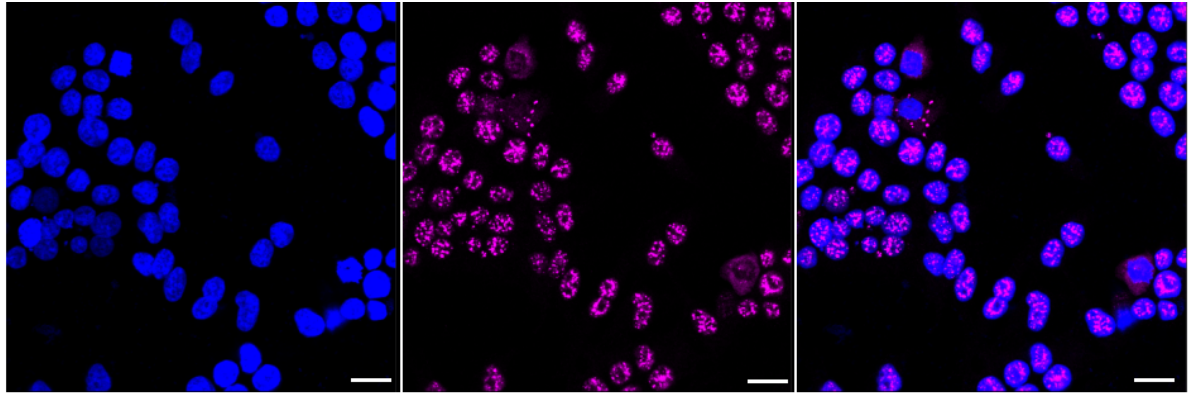
Western Blotting (WB): 1:1,000-1:5,000 Flow Cytometry (FCM): 1:2,000
Immunocytochemistry (IC): 1:1,000

Protocols

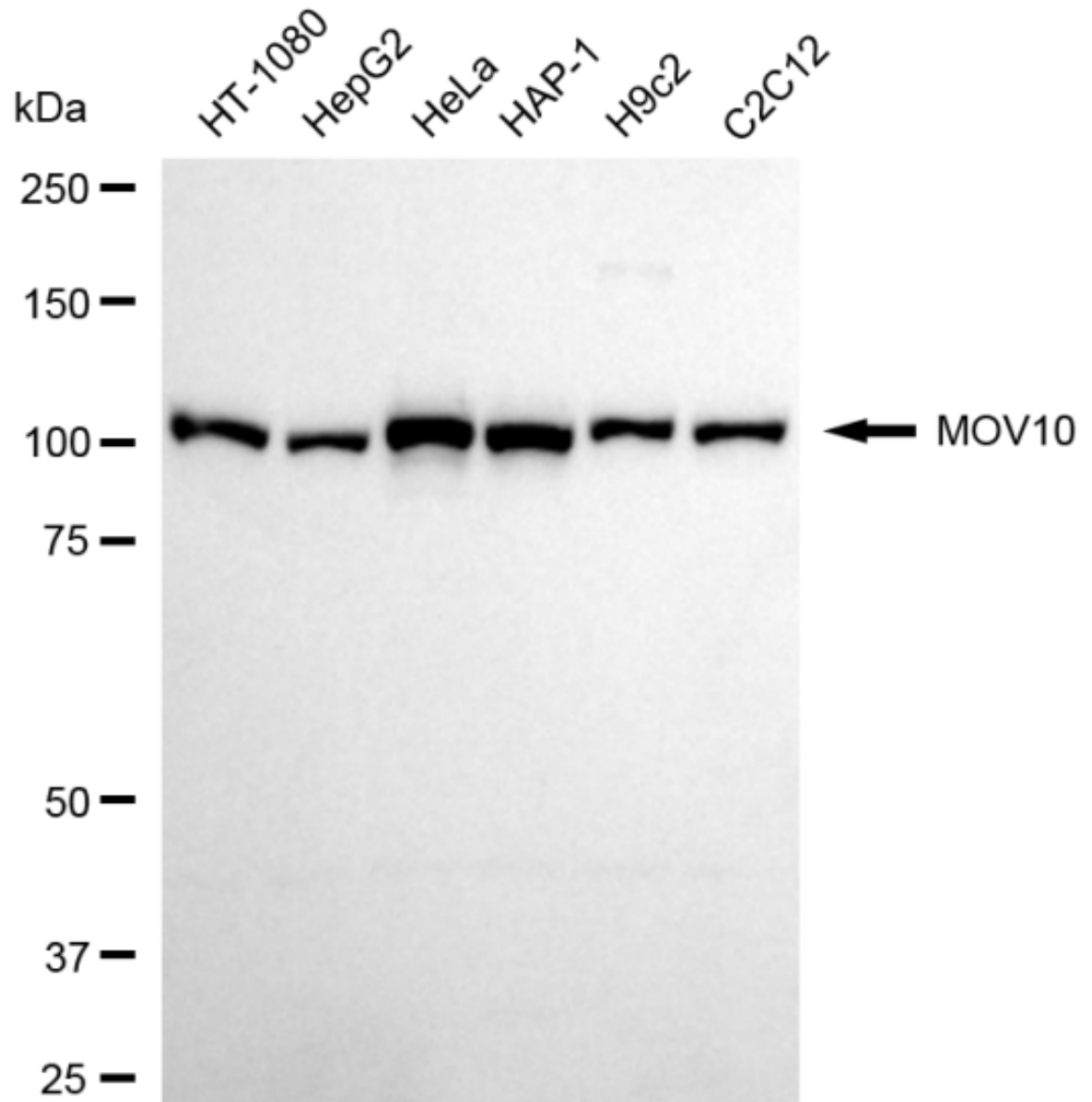
For general and specific antibody protocols please visit our website. Read all instructions before using this product.



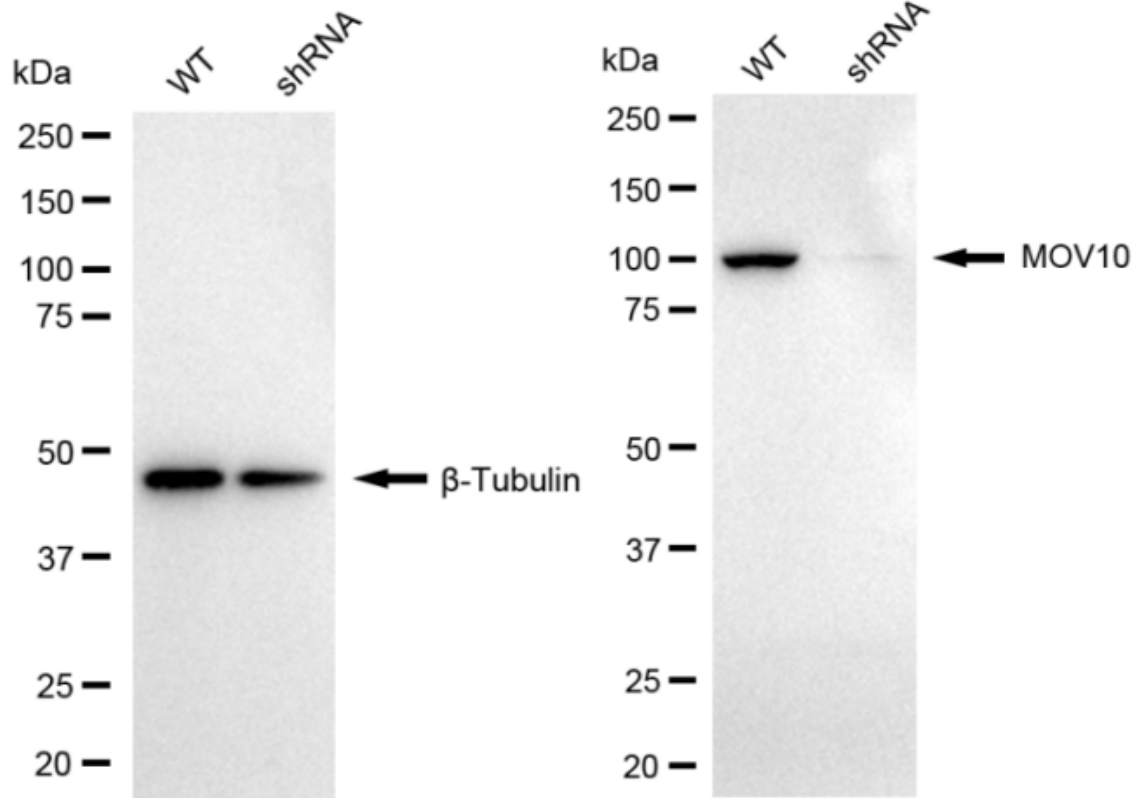
Flow cytometric analysis of MOV10 expression in HeLa cells using anti-MOV10 antibody 1:2,000. Green, isotype control; red, MOV10.



Immunocytochemical staining of HeLa cells with anti-MOV10 antibody 1:1,000. Nuclei were stained blue with DAPI; MOV10 was stained magenta with Alexa Fluor® 647. Images were taken using Leica stellaris 5. Protein abundance based on laser Intensity and smart gain: High. Scale bar: 20 μ m.



Western blotting analysis using anti-MOV10 antibody 1:5,000 and HRP-conjugated goat anti-rabbit secondary antibody 1:20,000 respectively. Image was developed using FeQ™ ECL Substrate Kit .



Western blotting analysis using anti-Mov10 antibody 1:5,000 and HRP-conjugated goat anti-rabbit secondary antibody 1:20,000 respectively. Image was developed using NaQ™ ECL Substrate Kit .