



SunLong Biotech Co.,LTD
Tel: 0086-571- 56623320 Fax:0086-571- 56623318
E-mail:sales@sunlongbiotech.com
www.sunlongbiotech.com

[KD-Validated] Anti-Methylmalonyl-CoA mutase Rabbit Monoclonal Antibody

Cat No.: KD-10610

Aliases:

MMUT; Methylmalonyl-CoA Mutase; MCM; MUT; Methylmalonyl-CoA Mutase, Mitochondrial; Methylmalonyl Coenzyme A Mutase; Methylmalonyl-CoA Isomerase; EC 5.4.99.2; Methylmalonyl-CoA Mutase Variant C.613_615delGAA; Methylmalonyl-CoA Mutase Variant C.1495G>A; Methylmalonyl-CoA Mutase Variant C.2011A>G; Methylmalonyl-CoA Mutase Variant C.2150G>T; Methylmalonyl-CoA Mutase Variant C.322C>T; Methylmalonyl-CoA Mutase Variant C.636G>A; Methylmalonyl-CoA Mutase Variant C.643G>A; Methylmalonyl-CoA Mutase C.*192delA; Methylmalonyl-CoA Mutase C.*51C>G; Mutant Methylmalonyl CoA Mutase

Background:

UniProt Entry: [P22033](#);NCBI Gene Entry: [4594](#)

Application Information

Molecular Weight: Predicted, 83 kDa, observed, 78 kDa Clonality: Rabbit monoclonal antibody Clone ID: 23GB4555 Species Reactivity: Human, Mouse, Rat Applications Tested: Western Blotting (WB), Flow Cytometry (FCM), Immunocytochemistry (IC)

Immunogen

A synthesized peptide derived from human MMUT

Isotype

Rabbit IgG

Storage Buffer

Supplied in PBS (pH 7.4) containing 50% glycerol, and 0.02% sodium azide.

Storage

Store at -20 °C for one year.

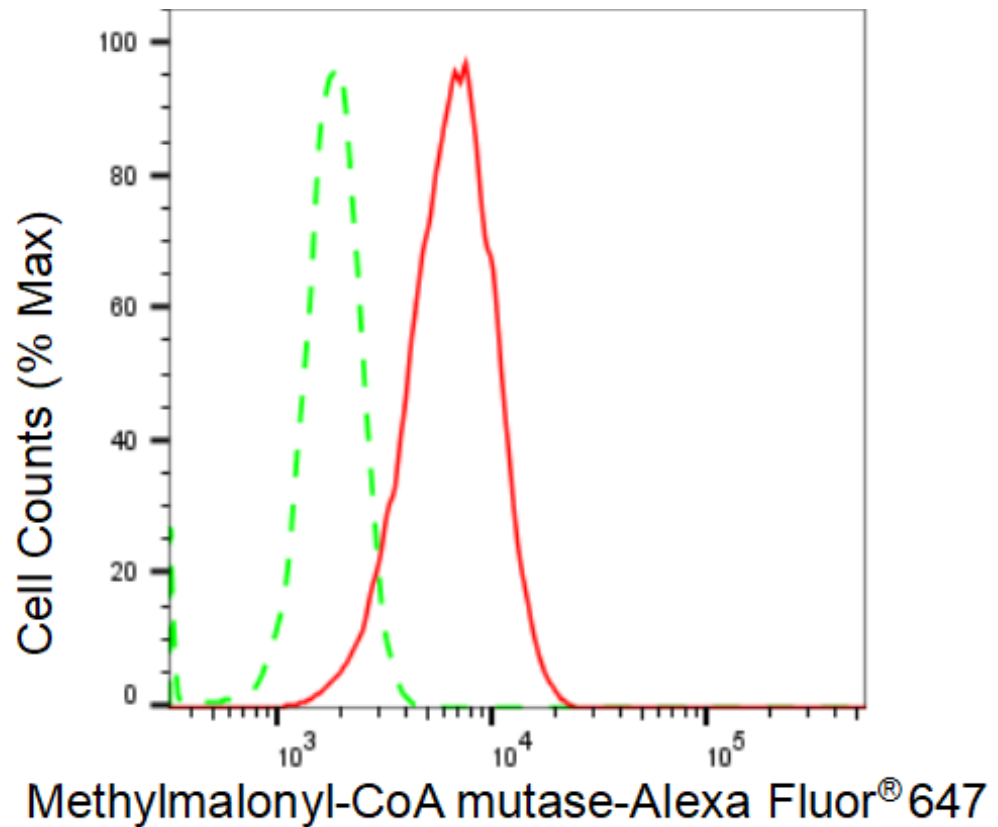
Recommended Dilutions

Western Blotting (WB): 1:1,000-1:5,000 Flow Cytometry (FCM): 1:2,000

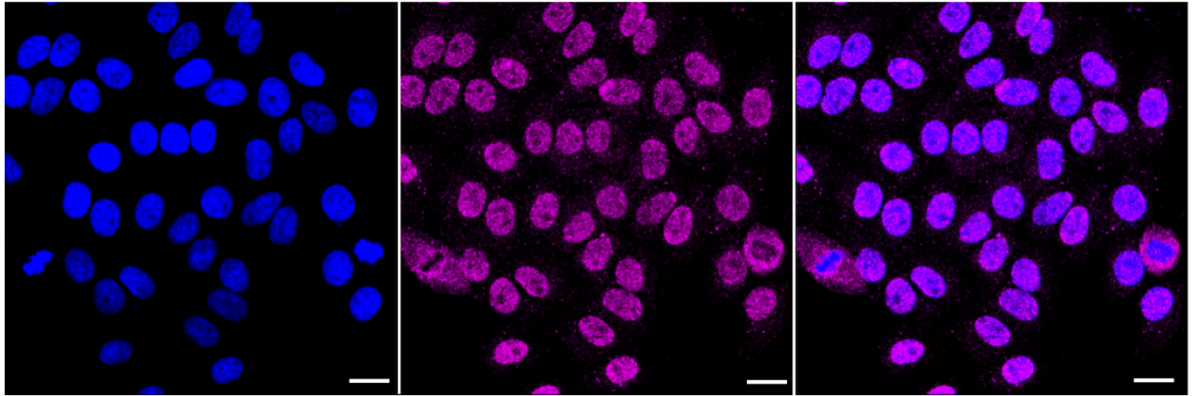
Immunocytochemistry (IC): 1:1,000

Protocols

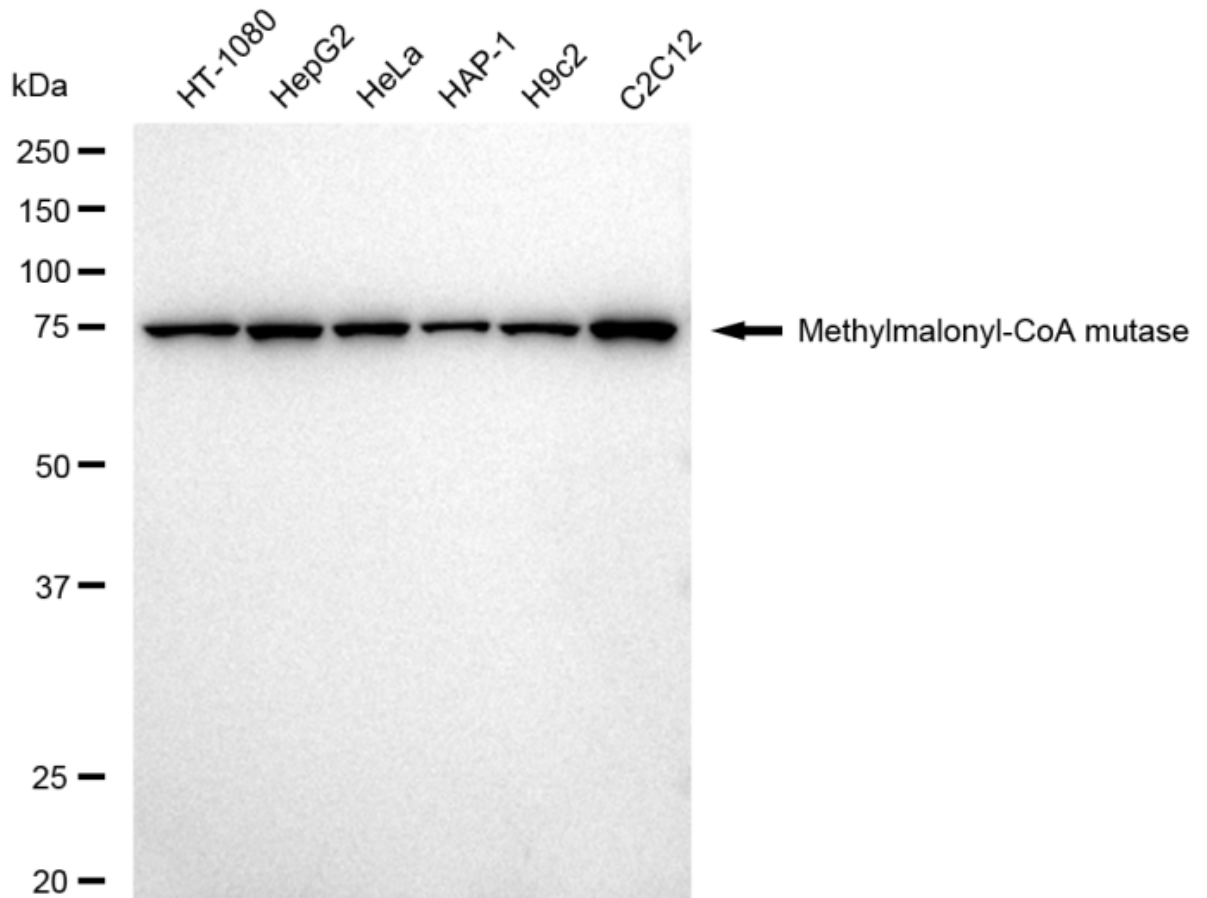
For general and specific antibody protocols please visit our website. Read all instructions before using this product.



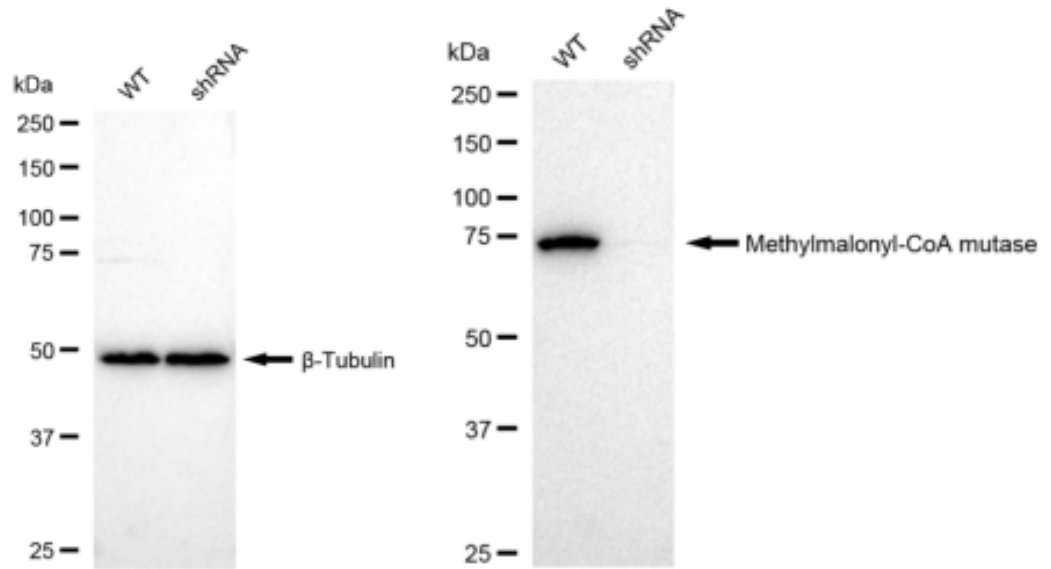
Flow cytometric analysis of Methyalmalonyl-CoA mutase expression in HepG2 cells using Methyalmalonyl-CoA mutase antibody 1:2,000. Green, isotype control; red, Methyalmalonyl-CoA mutase.



Immunocytochemical staining of HepG2 cells with Methylmalonyl-CoA mutase antibody 1:1,000. Nuclei were stained blue with DAPI; Methylmalonyl-CoA mutase was stained magenta with Alexa Fluor® 647. Images were taken using Leica stellaris 5. Protein abundance based on laser Intensity and smart gain: Very Low. Scale bar: 20 μ m.



Western blotting analysis using anti-Methylmalonyl-CoA mutase antibody 1:5,000 and HRP-conjugated goat anti-rabbit secondary antibody 1:20,000 respectively. Image was developed using FeQ™ ECL Substrate Kit .



Western blotting analysis using anti-Methylmalonyl-CoA mutase antibody 1:5,000 and HRP-conjugated goat anti-rabbit secondary antibody 1:20,000 respectively. Image was developed using FeQ™ ECL Substrate Kit .