



SunLong Biotech Co.,LTD  
Tel: 0086-571- 56623320 Fax:0086-571- 56623318  
E-mail:sales@sunlongbiotech.com  
www.sunlongbiotech.com

## **[KD-Validated] Anti-Methylmalonyl-CoA mutase Rabbit Monoclonal Antibody**

Cat No.: KD-10609

### **Aliases:**

MMUT; Methylmalonyl-CoA Mutase; MCM; MUT; Methylmalonyl-CoA Mutase, Mitochondrial; Methylmalonyl Coenzyme A Mutase; Methylmalonyl-CoA Isomerase; EC 5.4.99.2; Methylmalonyl-CoA Mutase Variant C.613\_615delGAA; Methylmalonyl-CoA Mutase Variant C.1495G>A; Methylmalonyl-CoA Mutase Variant C.2011A>G; Methylmalonyl-CoA Mutase Variant C.2150G>T; Methylmalonyl-CoA Mutase Variant C.322C>T; Methylmalonyl-CoA Mutase Variant C.636G>A; Methylmalonyl-CoA Mutase Variant C.643G>A; Methylmalonyl-CoA Mutase C.\*192delA; Methylmalonyl-CoA Mutase C.\*51C>G; Mutant Methylmalonyl CoA Mutase

### **Background:**

UniProt Entry: [P22033](#);NCBI Gene Entry: [4594](#)

### **Application Information**

Molecular Weight: Predicted, 83 kDa, observed, 74 kDa Clonality: Rabbit monoclonal antibody Clone ID: 23GB4550 Species Reactivity: Human, Mouse, Rat Applications Tested: Western Blotting (WB), Immunocytochemistry (IC)

### **Immunogen**

A synthesized peptide derived from human MUTA

### **Isotype**

Rabbit IgG

### **Storage Buffer**

Supplied in PBS (pH 7.4) containing 50% glycerol, and 0.02% sodium azide.

### **Storage**

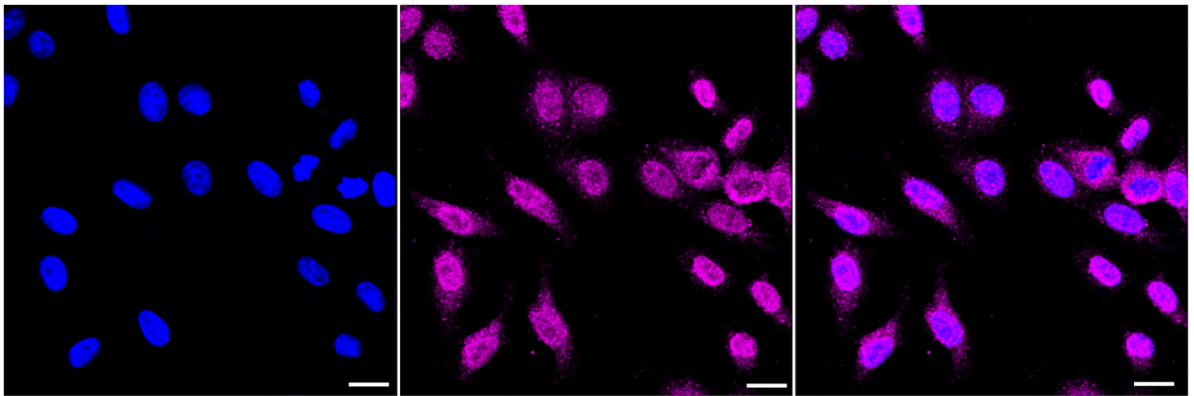
Store at -20 °C for one year.

### **Recommended Dilutions**

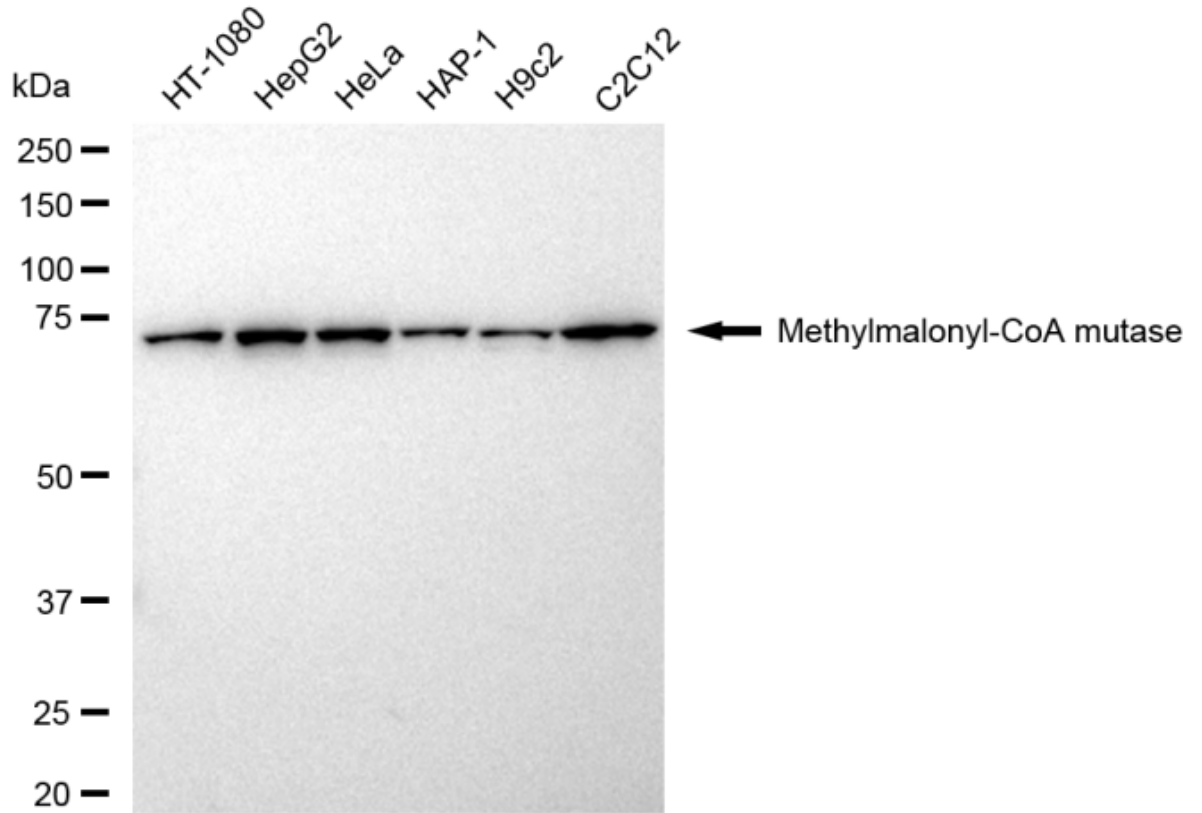
Western Blotting (WB): 1:1,000-1:5,000 Immunocytochemistry (IC): 1:1,000

### **Protocols**

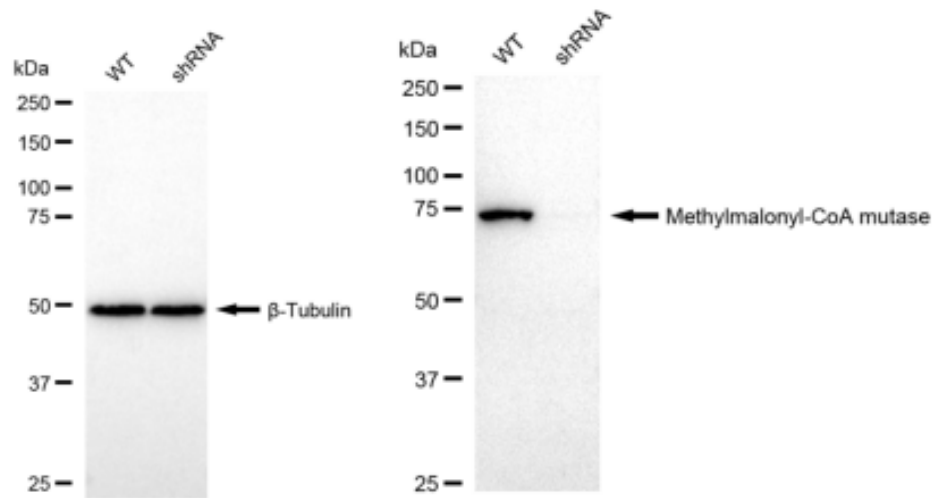
For general and specific antibody protocols please visit our website. Read all instructions before using this product.



Immunocytochemical staining of HepG2 cells with Methylmalonyl-CoA mutase antibody 1:1,000. Nuclei were stained blue with DAPI; Methylmalonyl-CoA mutase was stained magenta with Alexa Fluor® 647. Images were taken using Leica stellaris 5. Protein abundance based on laser Intensity and smart gain: Low. Scale bar: 20 µm.



Western blotting analysis using anti-Methylmalonyl-CoA mutase antibody 1:5,000 and HRP-conjugated goat anti-rabbit secondary antibody 1:20,000 respectively. Image was developed using FeQ™ ECL Substrate Kit .



Western blotting analysis using anti-Methylmalonyl-CoA mutase antibody 1:5,000 and HRP-conjugated goat anti-rabbit secondary antibody 1:20,000 respectively. Image was developed using FeQ™ ECL Substrate Kit .