



SunLong Biotech Co.,LTD
Tel: 0086-571- 56623320 Fax:0086-571- 56623318
E-mail:sales@sunlongbiotech.com
www.sunlongbiotech.com

[KD-Validated] Anti-MLKL Rabbit Monoclonal Antibody

Cat No.: KD-10606

Aliases:

MLKL; Mixed Lineage Kinase Domain-Like Protein; FLJ34389; HMLKL; Mixed Lineage Kinase Domain-Like

Background:

UniProt Entry: [Q8NB16](#);NCBI Gene Entry: [197259](#)

Application Information

Molecular Weight: Predicted, 54 kDa, observed, 54 kDa Clonality: Rabbit monoclonal antibody Clone ID: 24GB4615 Species Reaceivity: Human, Mouse Applicseions Tsted: Western Blotting (WB), Flow Cytometry (FCM)

Immunogen

Recombinant protein of human MLKL

Isotype

Rabbit IgG

Storage Buffer

Supplied in PBS (pH 7.4) containing 50% glycerol, and 0.02% sodium azide.

Storage

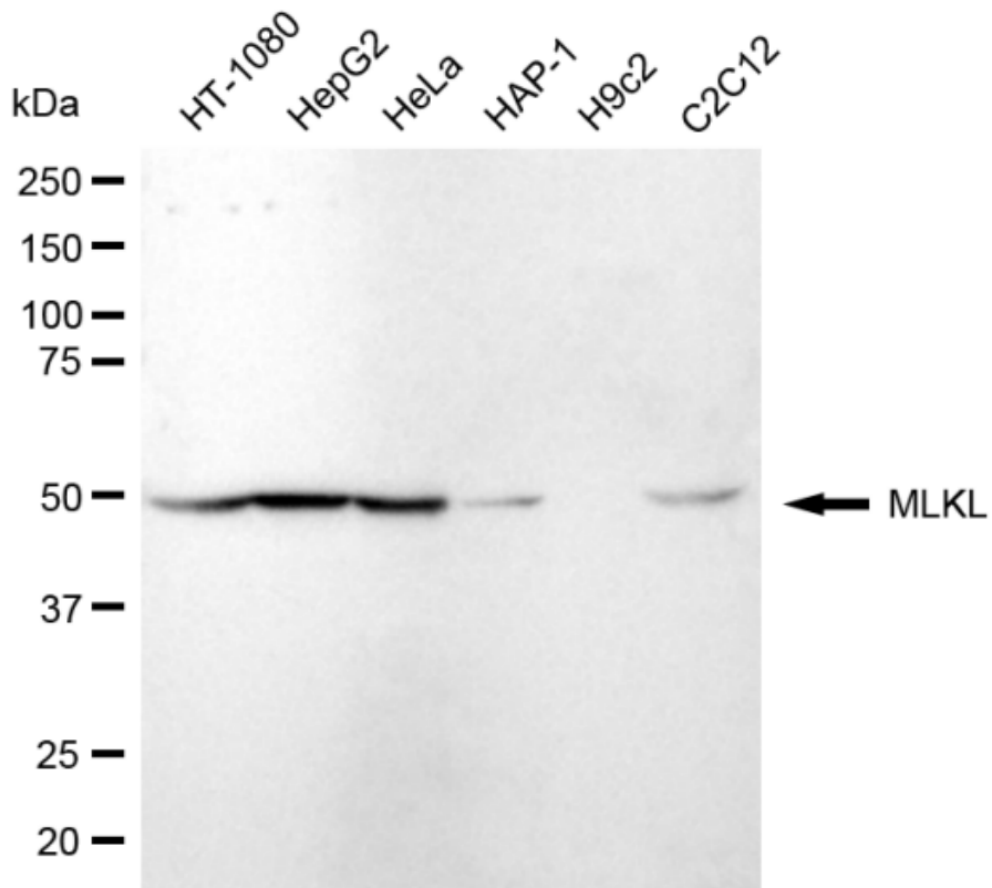
Store at -20 °C for one year.

Recommended Dilutions

Western Blotting (WB): 1:1,000-1:5,000 Flow Cytometry (FCM): 1:2,000

Protocols

For general and specific antibody protocols please visit our website. Read all instructions before using this product.



Western blotting analysis using anti-MLKL antibody 1:5,000 and HRP-conjugated goat anti-rabbit secondary antibody 1:20,000 respectively. Image was developed using NaQ™ ECL Substrate Kit 1:5,000 and HRP-conjugated goat anti-rabbit secondary antibody 1:20,000 respectively. Image was developed using NaQ™ ECL Substrate Kit 1:2,000. Green, isotype control; red, MLKL.