



SunLong Biotech Co.,LTD
Tel: 0086-571- 56623320 Fax:0086-571- 56623318
E-mail:sales@sunlongbiotech.com
www.sunlongbiotech.com

[KD-Validated] Anti-MLKL Rabbit Monoclonal Antibody

Cat No.: KD-10604

Aliases:

Mixed Lineage Kinase Domain-Like Protein; FLJ34389; HMLKL; Mixed Lineage Kinase Domain-Like

Background:

UniProt Entry: [Q8NB16](#);NCBI Gene Entry: [197259](#)

Application Information

Molecular Weight: Predicted, 54 kDa, observed, 54 kDa Clonality: Rabbit monoclonal antibody Clone ID: 23GB2895 Species Reaceivity: Human, Mouse Applicseions Tsted: Western Blotting (WB), Flow Cytometry (FCM), Immunocytochemistry (IC)

Immunogen

A synthesized peptide derived from human MLKL

Isotype

Rabbit IgG

Storage Buffer

Supplied in PBS (pH 7.4) containing 50% glycerol, and 0.02% sodium azide.

Storage

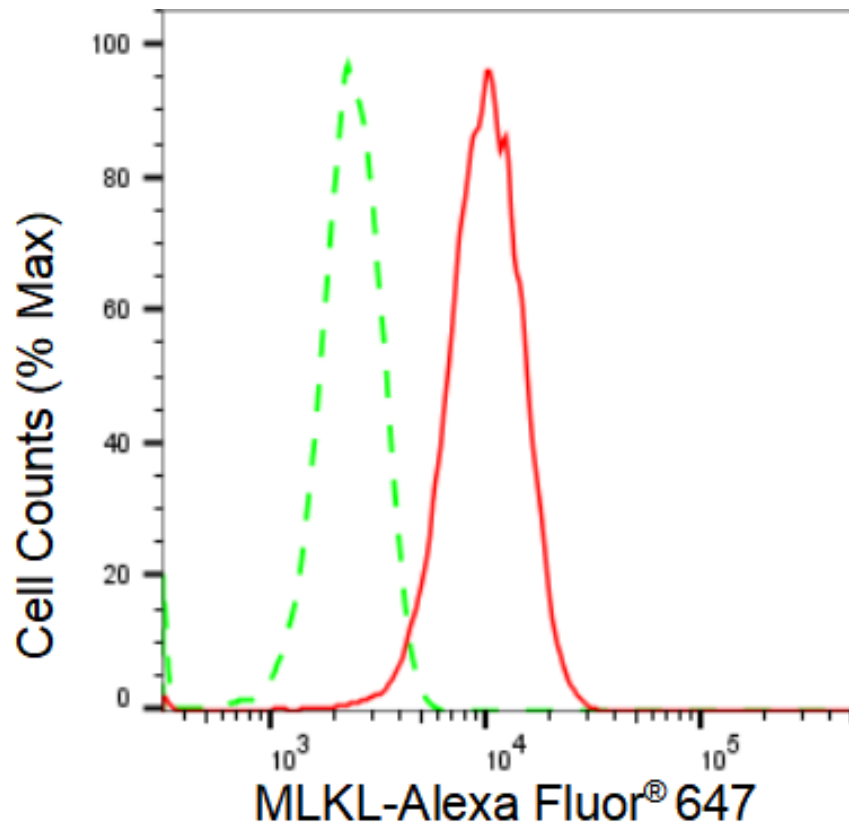
Store at -20 °C for one year.

Recommended Dilutions

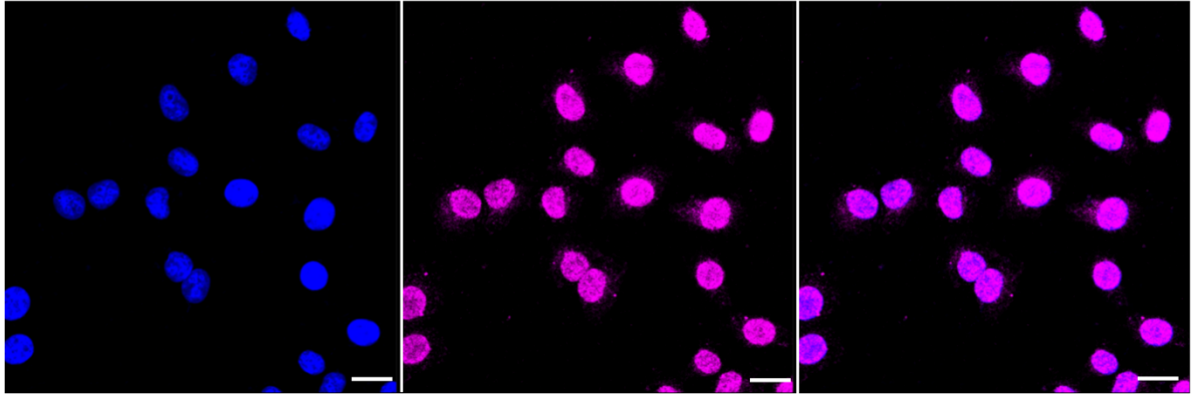
Western Blotting (WB): 1:1,000-1:5,000 Flow Cytometry (FCM): 1:2,000
Immunocytochemistry (IC): 1:1,000

Protocols

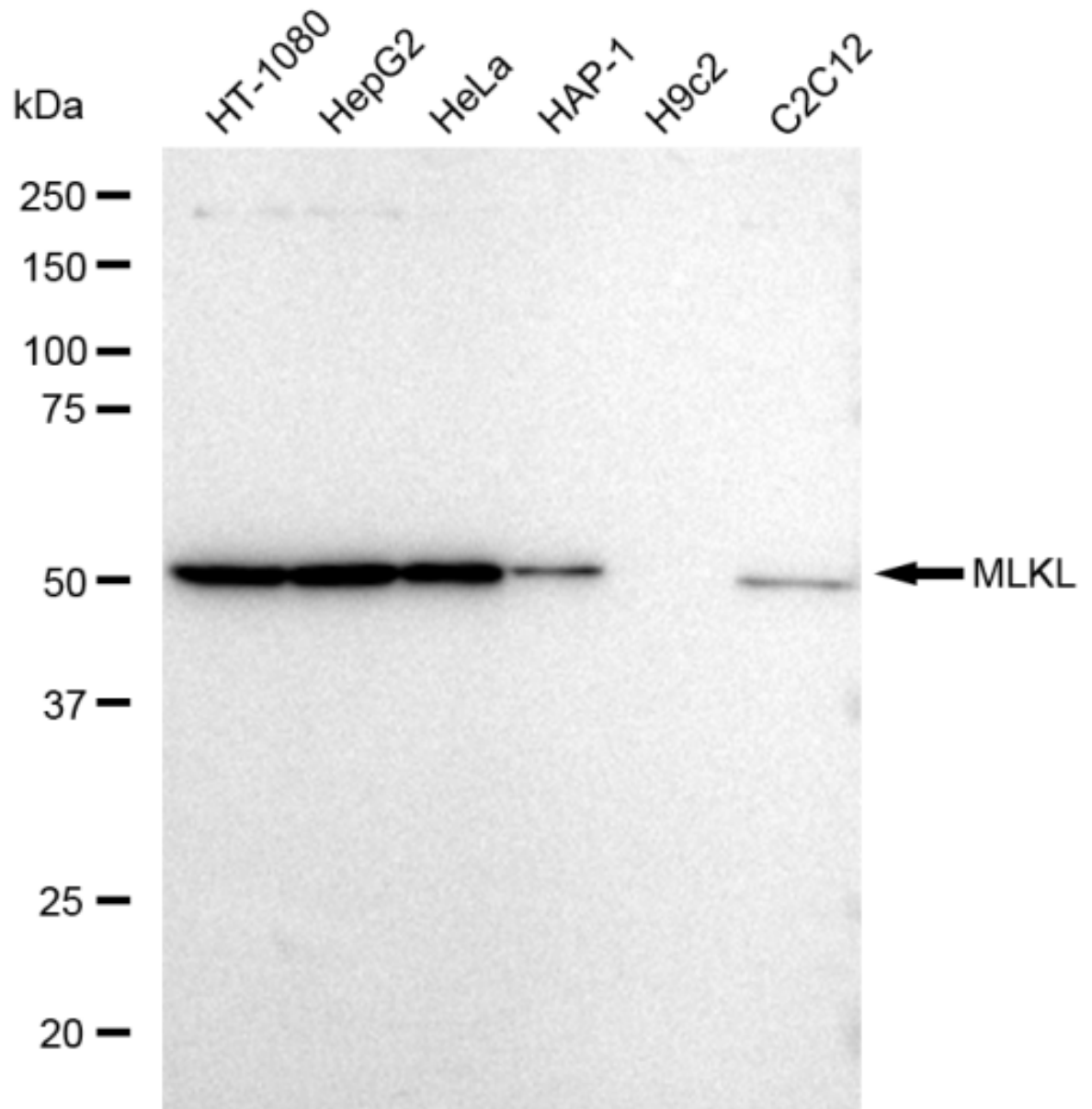
For general and specific antibody protocols please visit our website. Read all instructions before using this product.



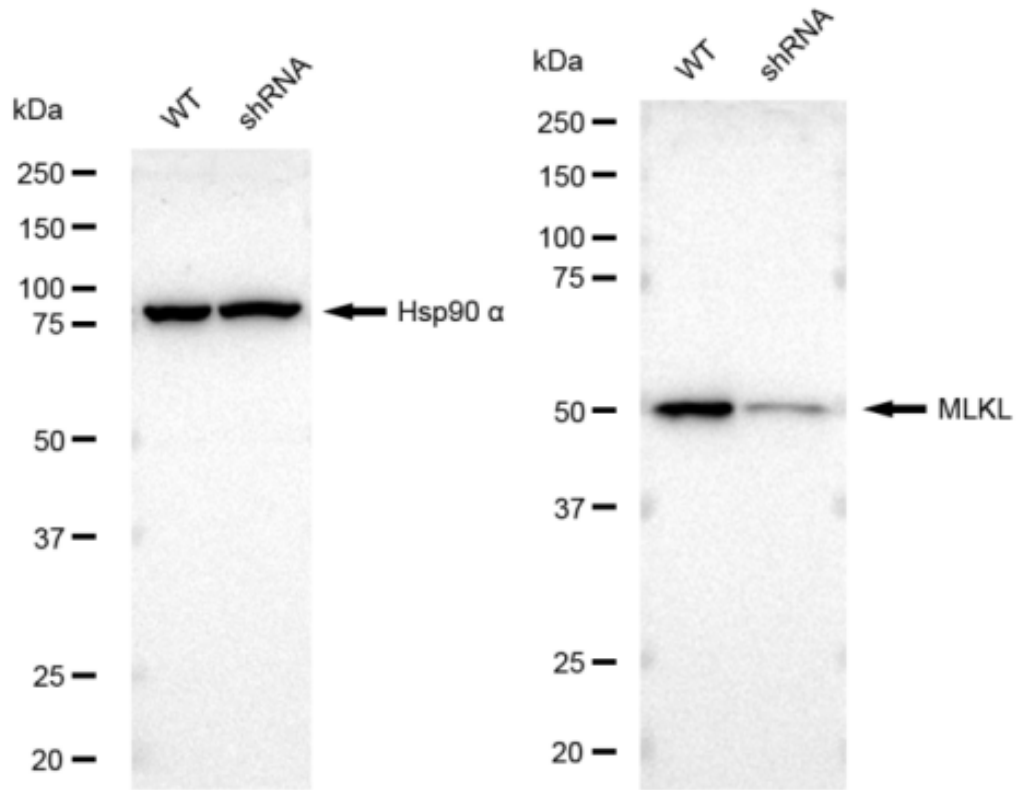
Flow cytometric analysis of MLKL expression in HepG2 cells using MLKL antibody 1:2,000. Green, isotype control; red, MLKL.



Immunocytochemical staining of HepG2 cells with MLKL antibody 1:1,000. Nuclei were stained blue with DAPI; MLKL was stained magenta with Alexa Fluor® 647. Images were taken using Leica stellaris 5. Protein abundance based on laser Intensity and smart gain: Medium. Scale bar: 20 μ m.



Western blotting analysis using anti-MLKL antibody 1:5,000 and HRP-conjugated goat anti-rabbit secondary antibody 1:20,000 respectively. Image was developed using FeQ™ ECL Substrate Kit . MLKL, Rho associated coiled-coil containing protein kinase 1.



Western blotting analysis using anti-MLKL antibody 1:5,000 and HRP-conjugated goat anti-rabbit secondary antibody 1:20,000 respectively. Image was developed using FeQ™ ECL Substrate Kit . MLKL, Rho associated coiled-coil containing protein kinase 1.