



SunLong Biotech Co.,LTD
Tel: 0086-571- 56623320 Fax:0086-571- 56623318
E-mail:sales@sunlongbiotech.com
www.sunlongbiotech.com

[KD-Validated] Anti-MFN1 Rabbit Monoclonal Antibody

Cat No.: KD-10603

Aliases:

MFN1; Mitofusin 1; Transmembrane GTPase MFN1; Mitofusin-1; Fzo Homolog; FLJ20693; Mitochondrial Transmembrane GTPase FZO-2; Mitochondrial Transmembrane GTPaseFzo-1; Putative Transmembrane GTPase; EC 3.6.5.-; EC 3.6.5; Hfzo1; Hfzo2

Background:

UniProt Entry: [Q8IWA4](#);NCBI Gene Entry: [55669](#)

Application Information

Molecular Weight: Predicted, 84 kDa, observed, 75 kDa Clonality: Rabbit monoclonal antibody Clone ID: 24GB4970 Species Reactivity: Human, Mouse, Rat Applications Tested: Western Blotting (WB), Flow Cytometry (FCM)

Immunogen

A synthesized peptide derived from rat Mitofusin 1

Isotype

Rabbit IgG

Storage Buffer

Supplied in PBS (pH 7.4) containing 50% glycerol, and 0.02% sodium azide.

Storage

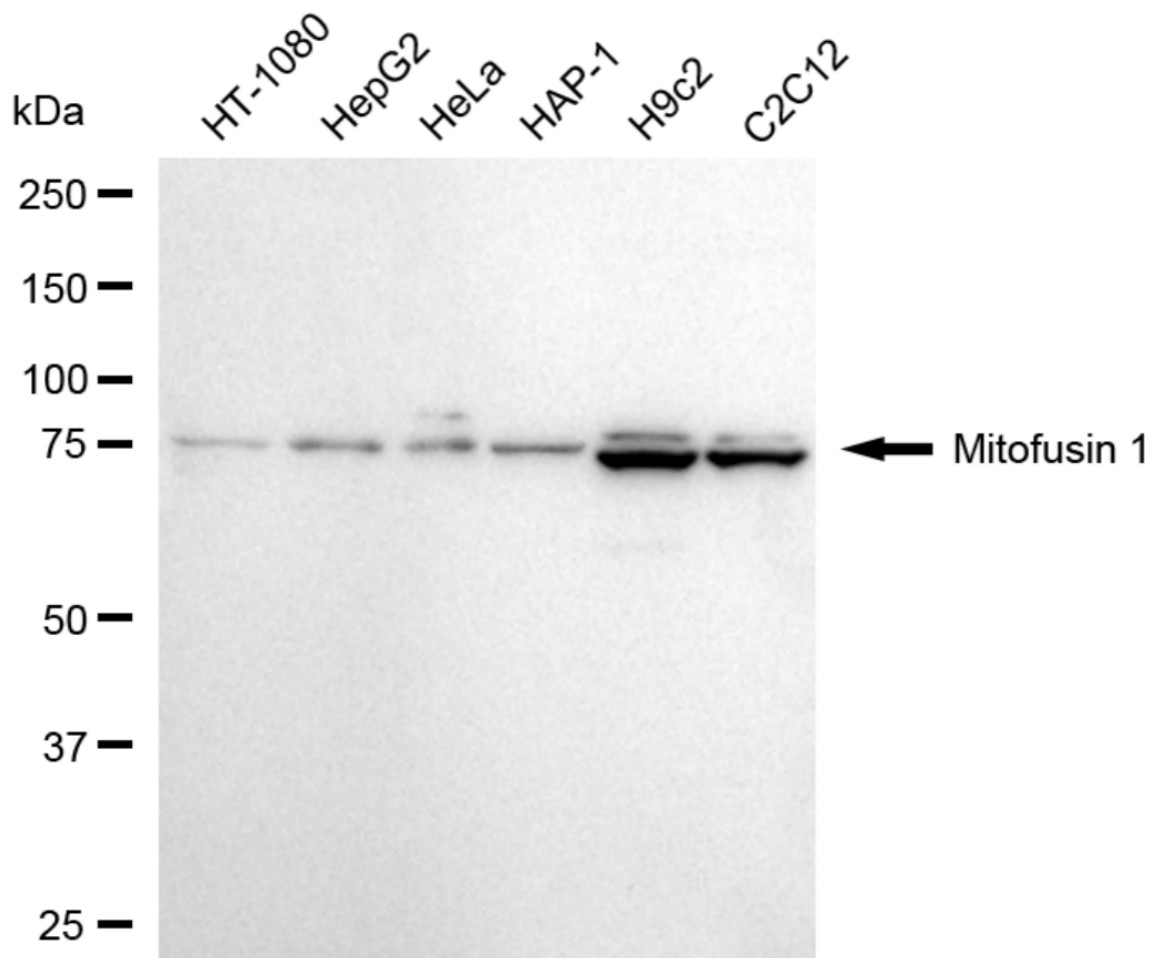
Store at -20 °C for one year.

Recommended Dilutions

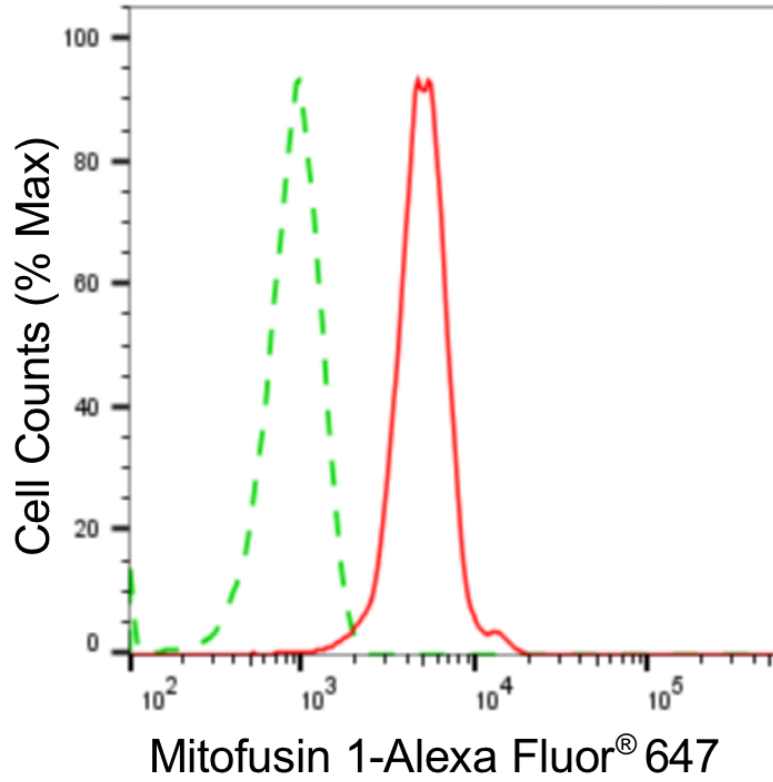
Western Blotting (WB): 1:1,000-1:5,000 Flow Cytometry (FCM): 1:2,000

Protocols

For general and specific antibody protocols please visit our website. Read all instructions before using this product.



Western blotting analysis using anti-mitofusin 1 antibody 1:5,000 and HRP-conjugated goat anti-rabbit secondary antibody 1:20,000 respectively. Image was developed using NaQ™ ECL Substrate Kit 1:5,000 and HRP-conjugated goat anti-rabbit secondary antibody 1:20,000 respectively. Image was developed using FeQ™ ECL Substrate Kit .



Flow cytometric analysis of Mitofusin 1 expression in C2C12 cells using anti-Mitofusin 1 antibody 1:2,000. Green, isotype control; red, Mitofusin 1.