



SunLong Biotech Co.,LTD
Tel: 0086-571- 56623320 Fax:0086-571- 56623318
E-mail:sales@sunlongbiotech.com
www.sunlongbiotech.com

[KD-Validated] Anti-Methionyl aminopeptidase 2 Rabbit Monoclonal Antibody

Cat No.: KD-10602

Aliases:

METAP2; Methionyl Aminopeptidase 2; MNPEP; MAP2; P67; Initiation Factor 2-Associated 67 KDa Glycoprotein; Methionine Aminopeptidase 2; Peptidase M; P67eIF2; Testicular Tissue Protein Li 17; EIF-2-Associated P67 Homolog; Peptidase M 2; EC 3.4.11.18; P67EIF2; MetAP 2; MAP 2

Background:

UniProt Entry: [P50579](#);NCBI Gene Entry: [10988](#)

Application Information

Molecular Weight: Predicted, 53 kDa, observed, 67 kDa Clonality: Rabbit monoclonal antibody Clone ID: 23GB2565 Species Reactivity: Human, Mouse, Rat Applications Tested: Western Blotting (WB), Flow Cytometry (FCM), Immunocytochemistry (IC)

Immunogen

A synthesized peptide derived from human Methionine Aminopeptidase 2

Isotype

Rabbit IgG

Storage Buffer

Supplied in PBS (pH 7.4) containing 50% glycerol, and 0.02% sodium azide.

Storage

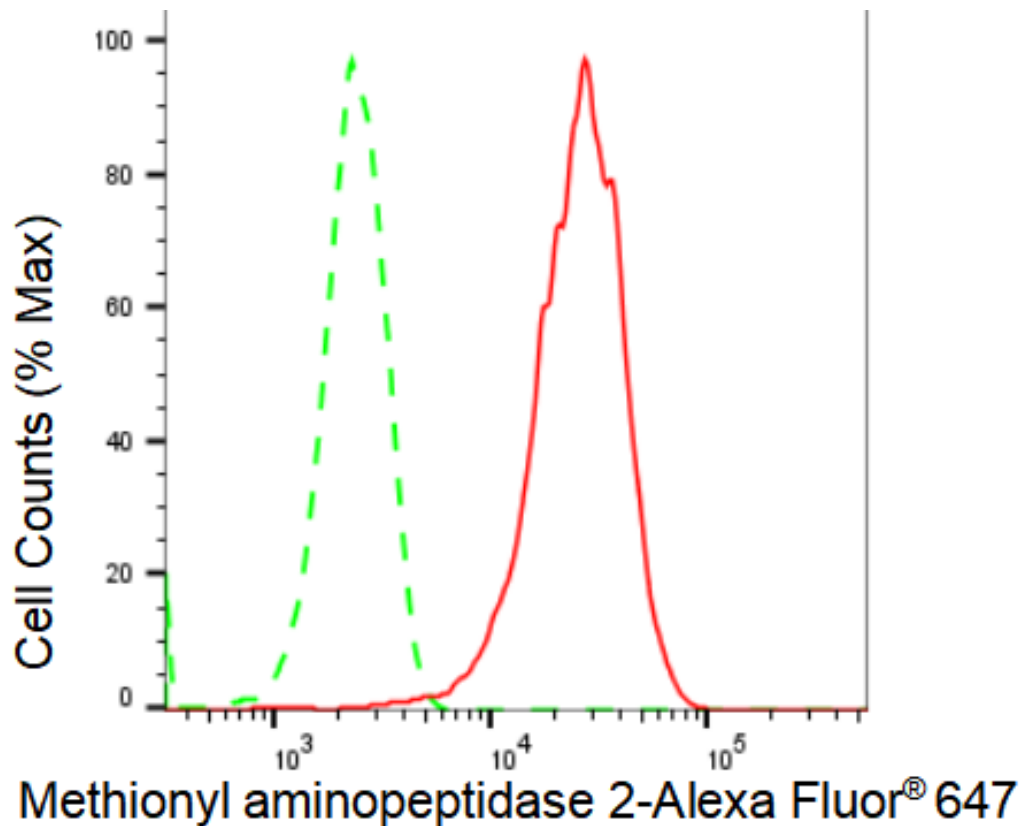
Store at -20 °C for one year.

Recommended Dilutions

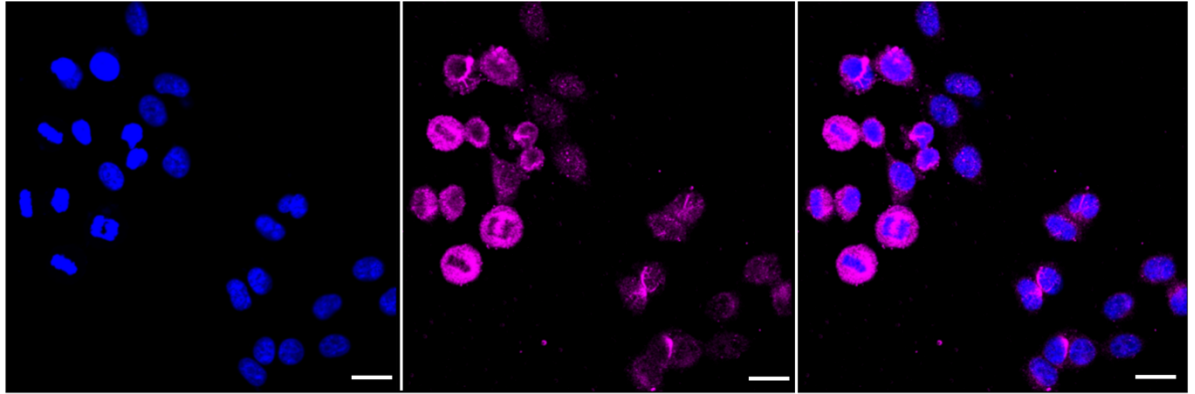
Western Blotting (WB): 1:1,000-1:5,000 Flow Cytometry (FCM): 1:2,000
Immunocytochemistry (IC): 1:1,000

Protocols

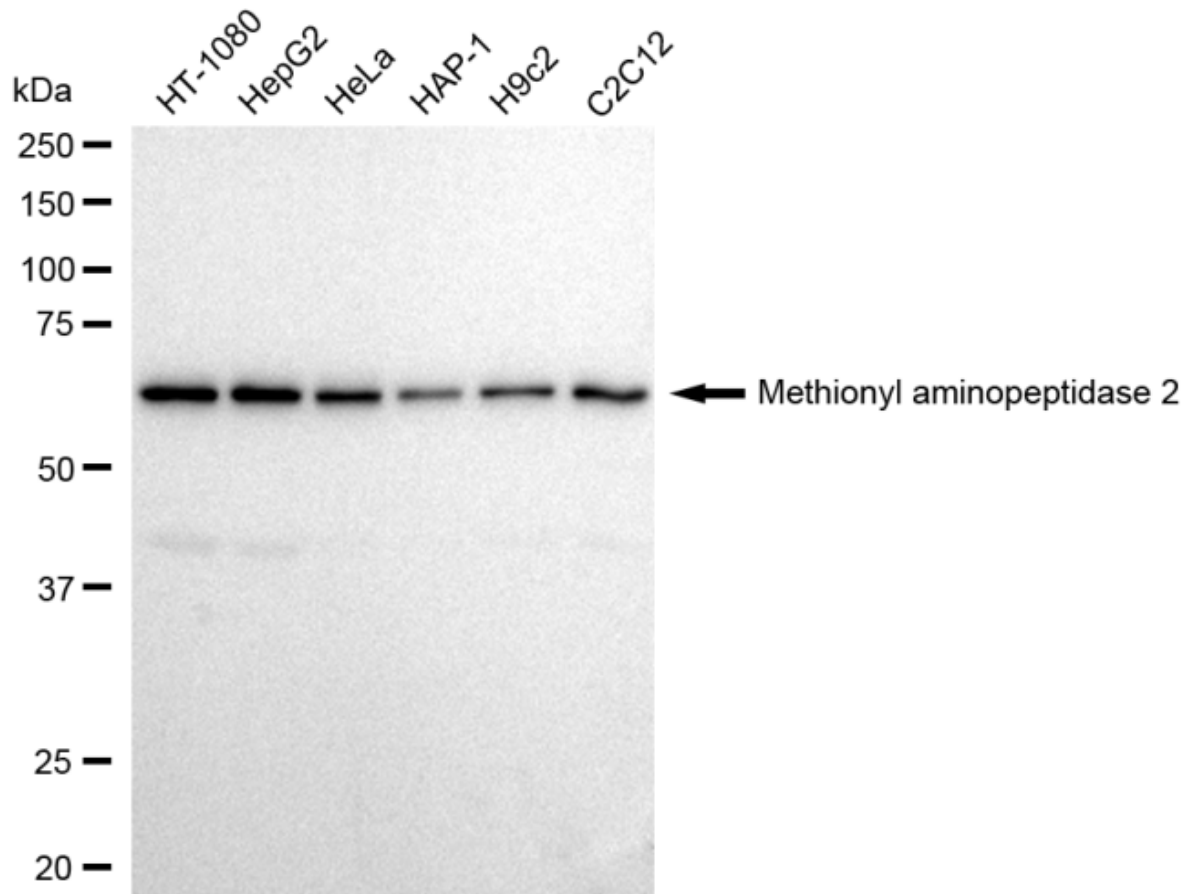
For general and specific antibody protocols please visit our website. Read all instructions before using this product.



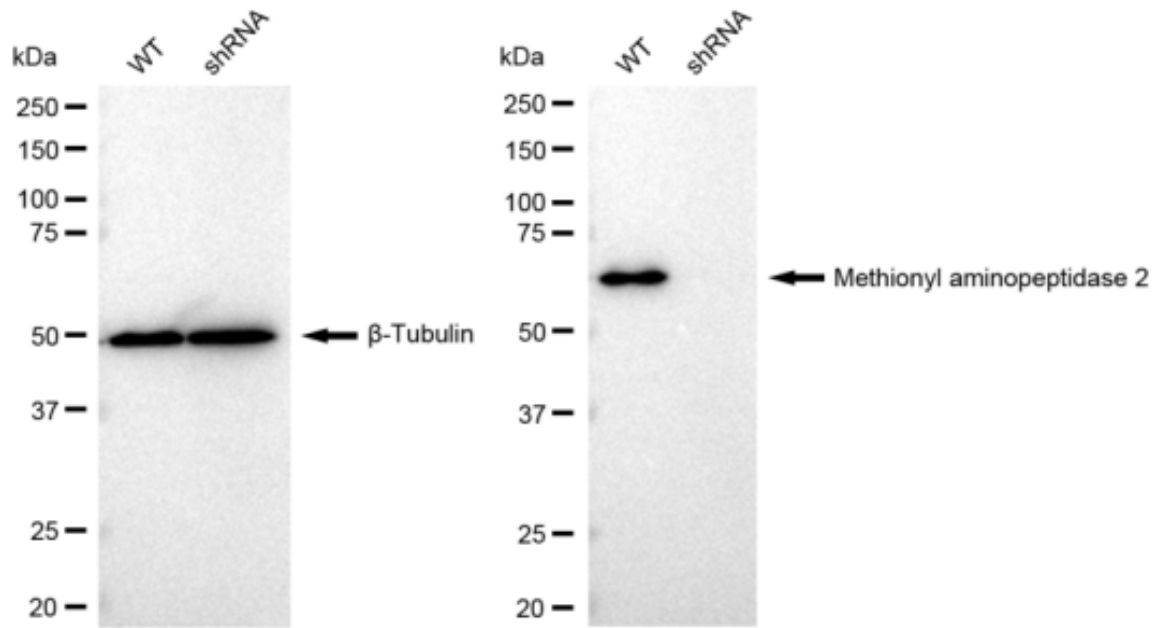
Flow cytometric analysis of Methionyl aminopeptidase 2 expression in HepG2 cells using Methionyl aminopeptidase 2 antibody 1:2,000. Green, isotype control; red, Methionyl aminopeptidase 2.



Immunocytochemical staining of HepG2 cells with Methionyl aminopeptidase 2 antibody 1:1,000. Nuclei were stained blue with DAPI; Methionyl aminopeptidase 2 was stained magenta with Alexa Fluor® 647. Images were taken using Leica stellaris 5. Protein abundance based on laser Intensity and smart gain: High. Scale bar: 20 μ m.



Western blotting analysis using anti-Methionyl aminopeptidase 2 antibody 1:5,000 and HRP-conjugated goat anti-rabbit secondary antibody 1:20,000 respectively. Image was developed using FeQ™ ECL Substrate Kit .



Western blotting analysis using anti-Methionyl aminopeptidase 2 antibody 1:5000 and HRP-conjugated goat anti-rabbit secondary antibody 1:20000 respectively. Image was developed using FeQ™ ECL Substrate Kit .