



SunLong Biotech Co.,LTD
Tel: 0086-571- 56623320 Fax:0086-571- 56623318
E-mail:sales@sunlongbiotech.com
www.sunlongbiotech.com

[KD-Validated] Anti-Malate dehydrogenase 2 Rabbit Monoclonal Antibody

Cat No.: KD-10600

Aliases:

MDH2; Malate Dehydrogenase 2; Malate Dehydrogenase 2, NAD (Mitochondrial); Malate Dehydrogenase, Mitochondrial; EC 1.1.1.37; Testicular Tissue Protein Li 120; MGC:3559; EC 1.1.1; EIEE51; DEE51; M-MDH; MOR1; MDH

Background:

UniProt Entry: [P40926](#);NCBI Gene Entry: [4191](#)

Application Information

Molecular Weight: Predicted, 36 kDa, observed, 36 kDa Clonality: Rabbit monoclonal antibody Clone ID: 23GB2325 Species Reactivity: Human, Mouse, Rat Applications Tested: Western Blotting (WB), Flow Cytometry (FCM), Immunocytochemistry (IC)

Immunogen

A synthesized peptide derived from human MDH2

Isotype

Rabbit IgG

Storage Buffer

Supplied in PBS (pH 7.4) containing 50% glycerol, and 0.02% sodium azide.

Storage

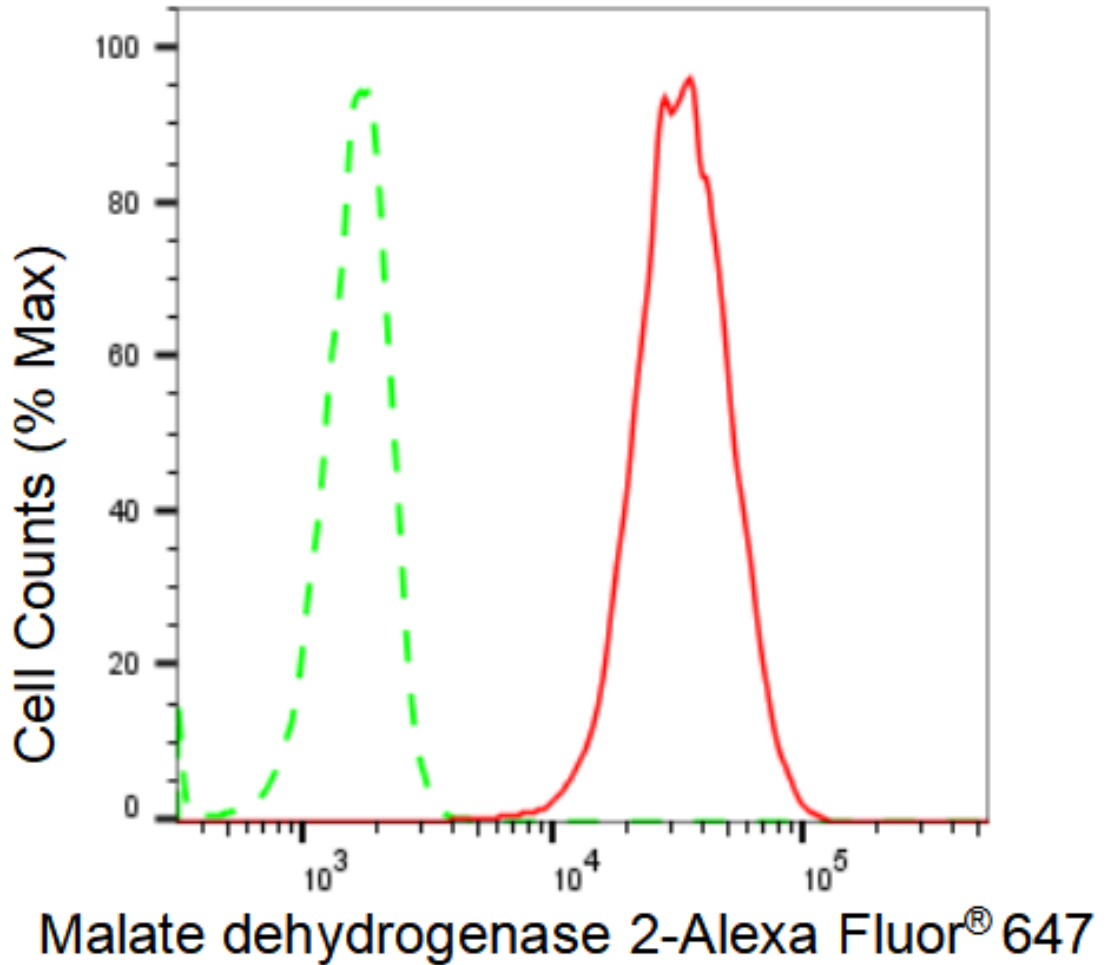
Store at -20 °C for one year.

Recommended Dilutions

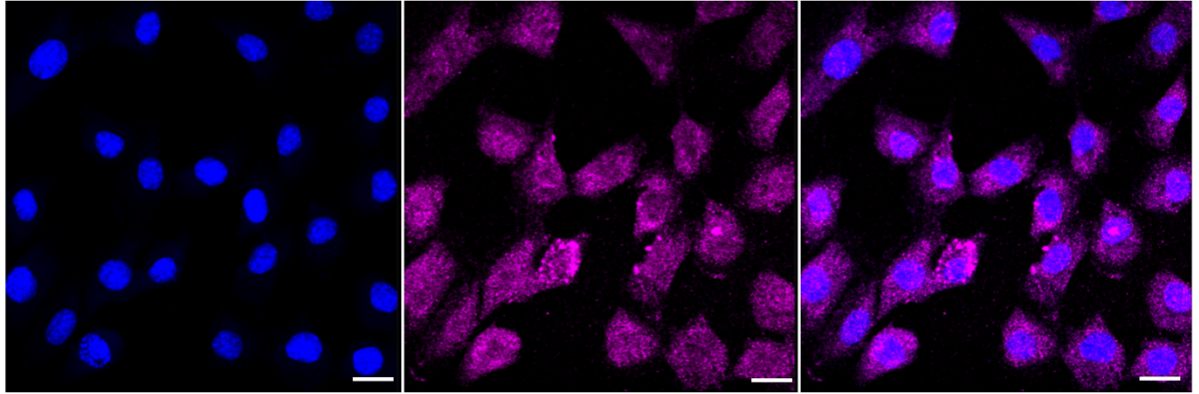
Western Blotting (WB): 1:1,000-1:5,000 Flow Cytometry (FCM): 1:2,000
Immunocytochemistry (IC): 1:1,000

Protocols

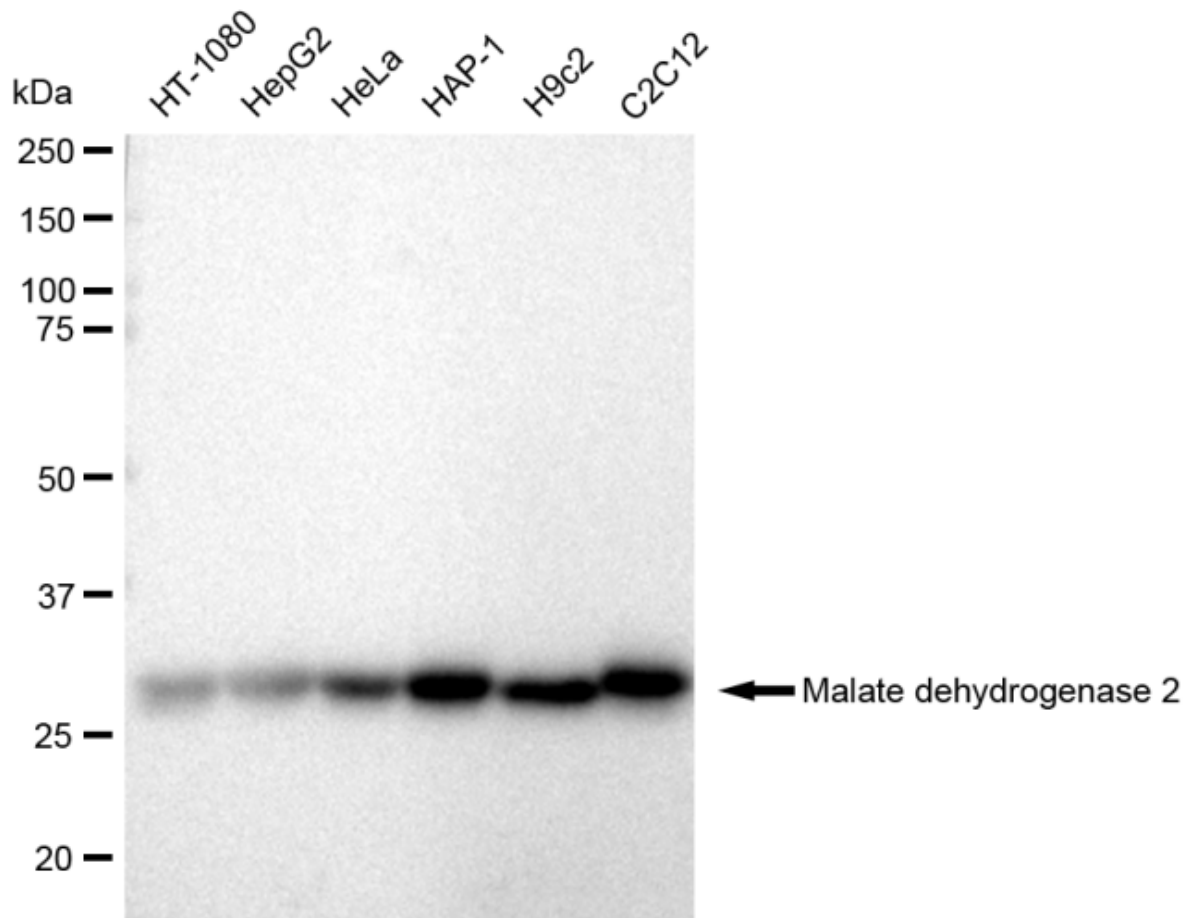
For general and specific antibody protocols please visit our website. Read all instructions before using this product.



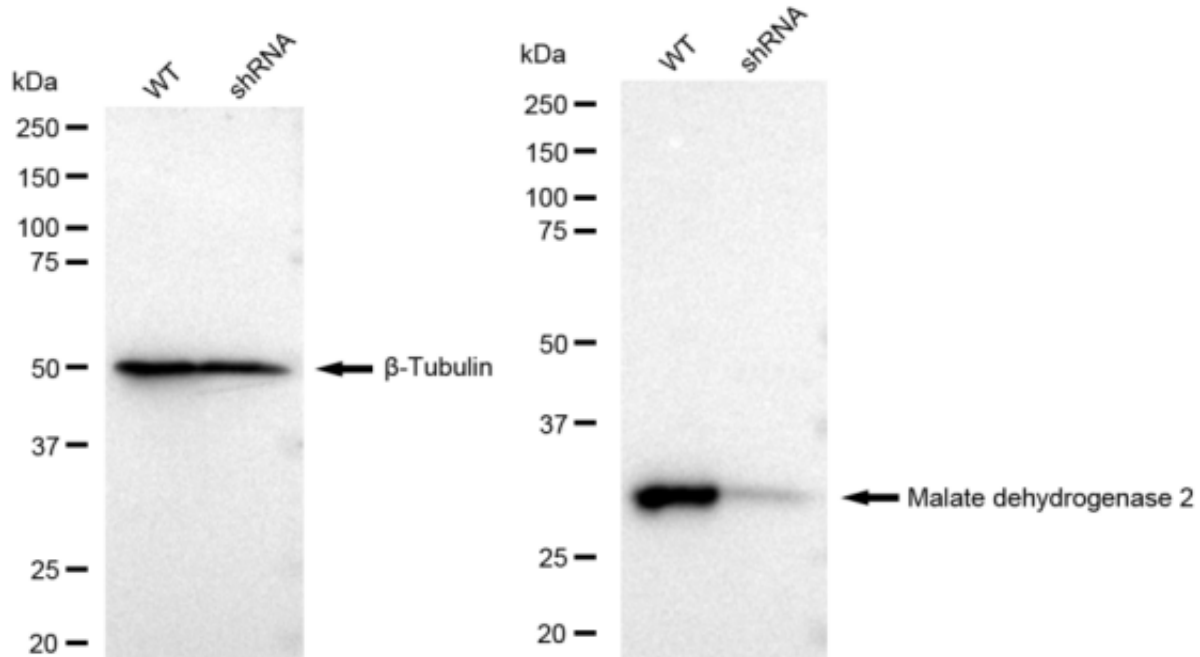
Flow cytometric analysis of Malate dehydrogenase 2 expression in C2C12 cells using Malate dehydrogenase 2 antibody 1:2,000. Green, isotype control; red, Malate dehydrogenase 2.



Immunocytochemical staining of C2C12 cells with Malate dehydrogenase 2 antibody 1:1,000. Nuclei were stained blue with DAPI; Malate dehydrogenase 2 was stained magenta with Alexa Fluor® 647. Images were taken using Leica stellaris 5. Protein abundance based on laser Intensity and smart gain: Low. Scale bar: 20 µm.



Western blotting analysis using anti-Malate dehydrogenase 2 antibody 1:5,000 and HRP-conjugated goat anti-rabbit secondary antibody 1:20,000 respectively. Image was developed using FeQ™ ECL Substrate Kit .



Western blotting analysis using anti-Malate dehydrogenase 2 antibody 1:5,000 and HRP-conjugated goat anti-rabbit secondary antibody 1:20,000 respectively. Image was developed using FeQ™ ECL Substrate Kit .