



SunLong Biotech Co.,LTD  
Tel: 0086-571- 56623320 Fax:0086-571- 56623318  
E-mail:sales@sunlongbiotech.com  
www.sunlongbiotech.com

## **[KD-Validated] Anti-Malate Dehydrogenase 1 Rabbit Rabbit Monoclonal Antibody**

Cat No.: KD-10599

### **Aliases:**

MDH1; Malate Dehydrogenase 1; Malate Dehydrogenase 1, NAD (Soluble); Aromatic Alpha-Keto Acid Reductase; Malate Dehydrogenase, Cytoplasmic; Cytosolic Malate Dehydrogenase; EC 1.1.1.37; MDHA; KAR; Epididymis Secretory Protein Li 32; Malate Dehydrogenase, Peroxisomal; Diiodophenylpyruvate Reductase; Soluble Malate Dehydrogenase; EC 1.1.1.96; HEL-S-32; MGC:1375; EIEE88; DEE88; MDH-S; MOR2

### **Background:**

UniProt Entry: [P40925](#);NCBI Gene Entry: [4190](#)

### **Application Information**

Molecular Weight: Predicted, 36 kDa, observed, 36 kDa Clonality: Rabbit monoclonal antibody Clone ID: 24GB1295 Species Reactivity: Human, Mouse, Rat Applications Tested: Western Blotting (WB), Flow Cytometry (FCM)

### **Immunogen**

A synthesized peptide derived from human MDH1

### **Isotype**

Rabbit IgG

### **Storage Buffer**

Supplied in PBS (pH 7.4) containing 50% glycerol, and 0.02% sodium azide.

**Storage**

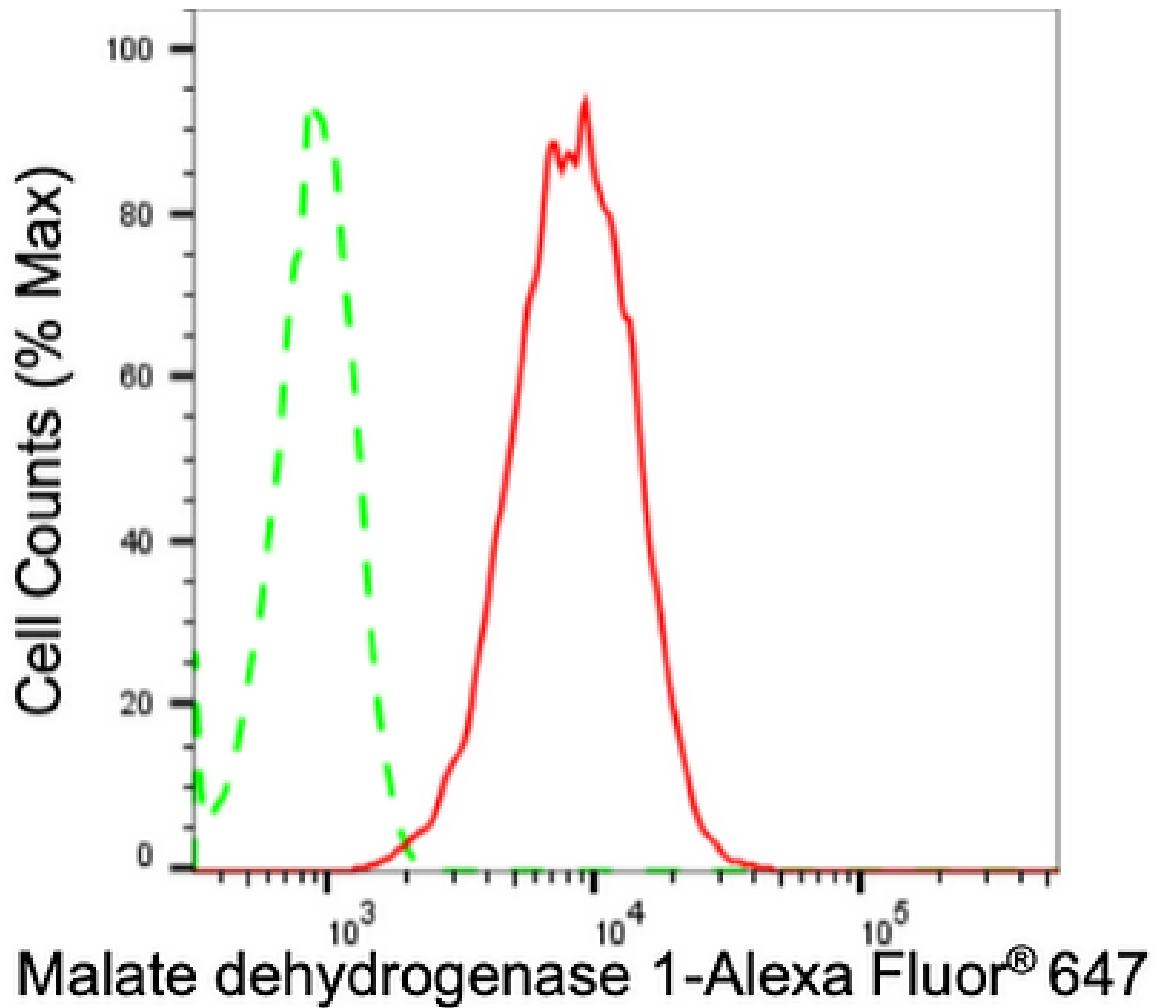
Store at -20 °C for one year.

**Recommended Dilutions**

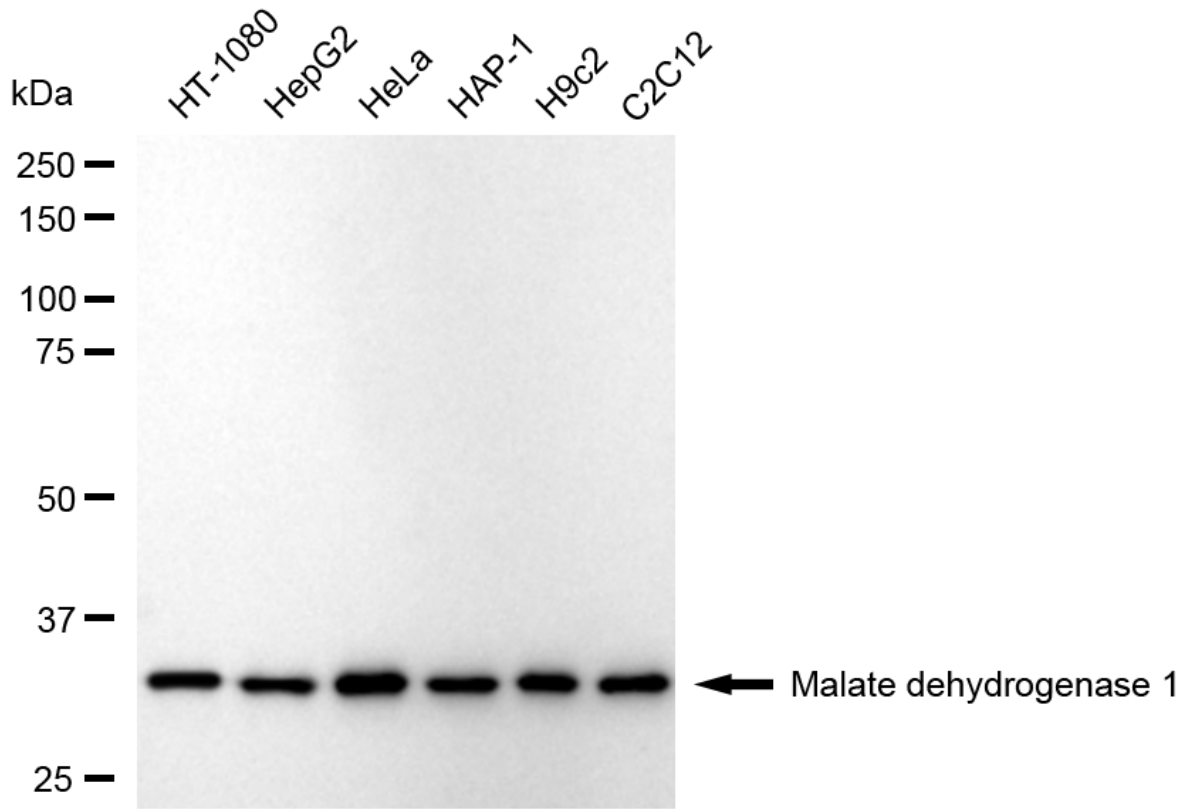
Western Blotting (WB): 1:1,000-1:5,000 Flow Cytometry (FCM): 1:2,000

**Protocols**

For general and specific antibody protocols please visit our website. Read all instructions before using this product.



Flow cytometric analysis of Malate dehydrogenase 1 expression in HepG2 cells using anti-Malate dehydrogenase 1 antibody 1:2,000. Green, isotype control; red, Malate dehydrogenase 1.



Western blotting analysis using anti-Malate dehydrogenase 1 antibody 1:5,000 and HRP-conjugated goat anti-rabbit secondary antibody 1:20,000 respectively. Image was developed using NaQ™ ECL Substrate Kit 1:5,000 and HRP-conjugated goat anti-rabbit secondary antibody 1:20,000 respectively. Image was developed using NaQ™ ECL Substrate Kit .