



SunLong Biotech Co.,LTD  
Tel: 0086-571- 56623320 Fax:0086-571- 56623318  
E-mail:sales@sunlongbiotech.com  
www.sunlongbiotech.com

## **[KD-Validated] Anti-MCM7 Rabbit Monoclonal Antibody**

Cat No.: KD-10597

### **Aliases:**

Minichromosome Maintenance Complex Component 7; CDC47; PPP1R104; MCM2; Protein Phosphatase 1, Regulatory Subunit 104; DNA Replication Licensing Factor MCM7; CDC47 Homolog; P1.1-MCM3; MCM7 Minichromosome Maintenance Deficient 7 (*S. Cerevisiae*); Minichromosome Maintenance Deficient (*S. Cerevisiae*) 7; Minichromosome Maintenance Deficient 7; Homolog Of *S. Cerevisiae* Cdc47; EC 3.6.4.12; P1CDC47; PNAS146; P85MCM

### **Background:**

UniProt Entry: [P33993](#);NCBI Gene Entry: [4176](#)

### **Application Information**

Molecular Weight: Predicted, 81 kDa, observed, 81 kDa Clonality: Rabbit monoclonal antibody Clone ID: 23GB930 Spncies Reactivity: Human, Rat Applications Tested: Western Blotting (WB), Flow Cytometry (FCM), Immunocytochemistry (IC)

### **Immunogen**

A synthesized peptide derived from human MCM7

### **Isotype**

Rabbit IgG

### **Storage Buffer**

Supplied in PBS (pH 7.4) containing 50% glycerol, and 0.02% sodium azide.

#### Storage

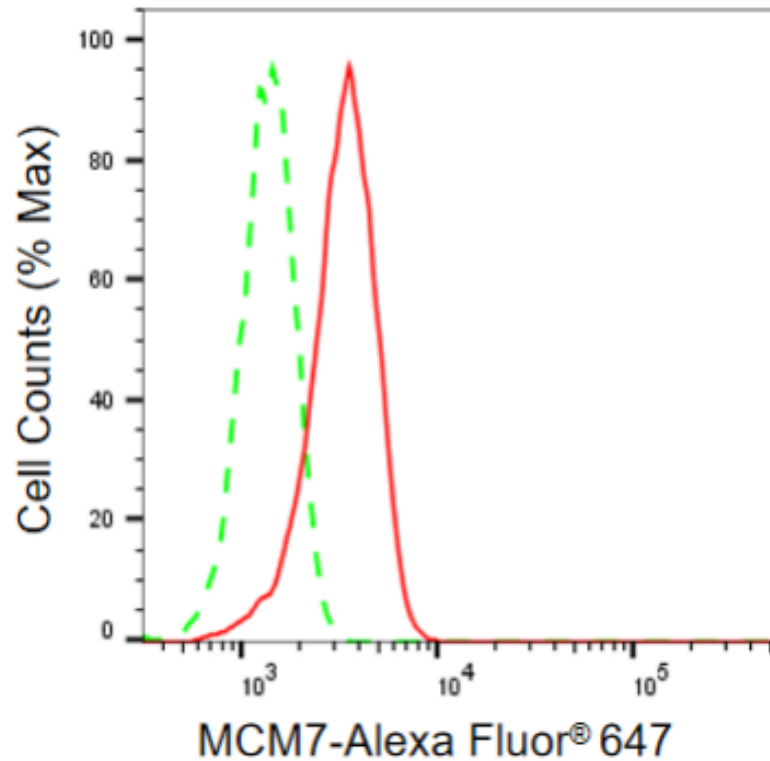
Store at -20 °C for one year.

#### Recommended Dilutions

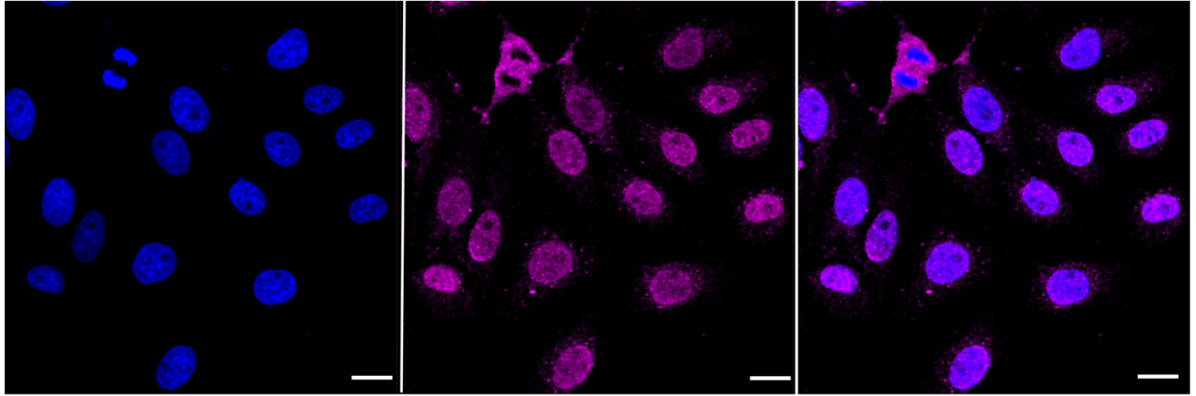
Western Blotting (WB): 1:1,000-1:5,000 Flow Cytometry (FCM): 1:2,000  
Immunocytochemistry (IC): 1:1,000

#### Protocols

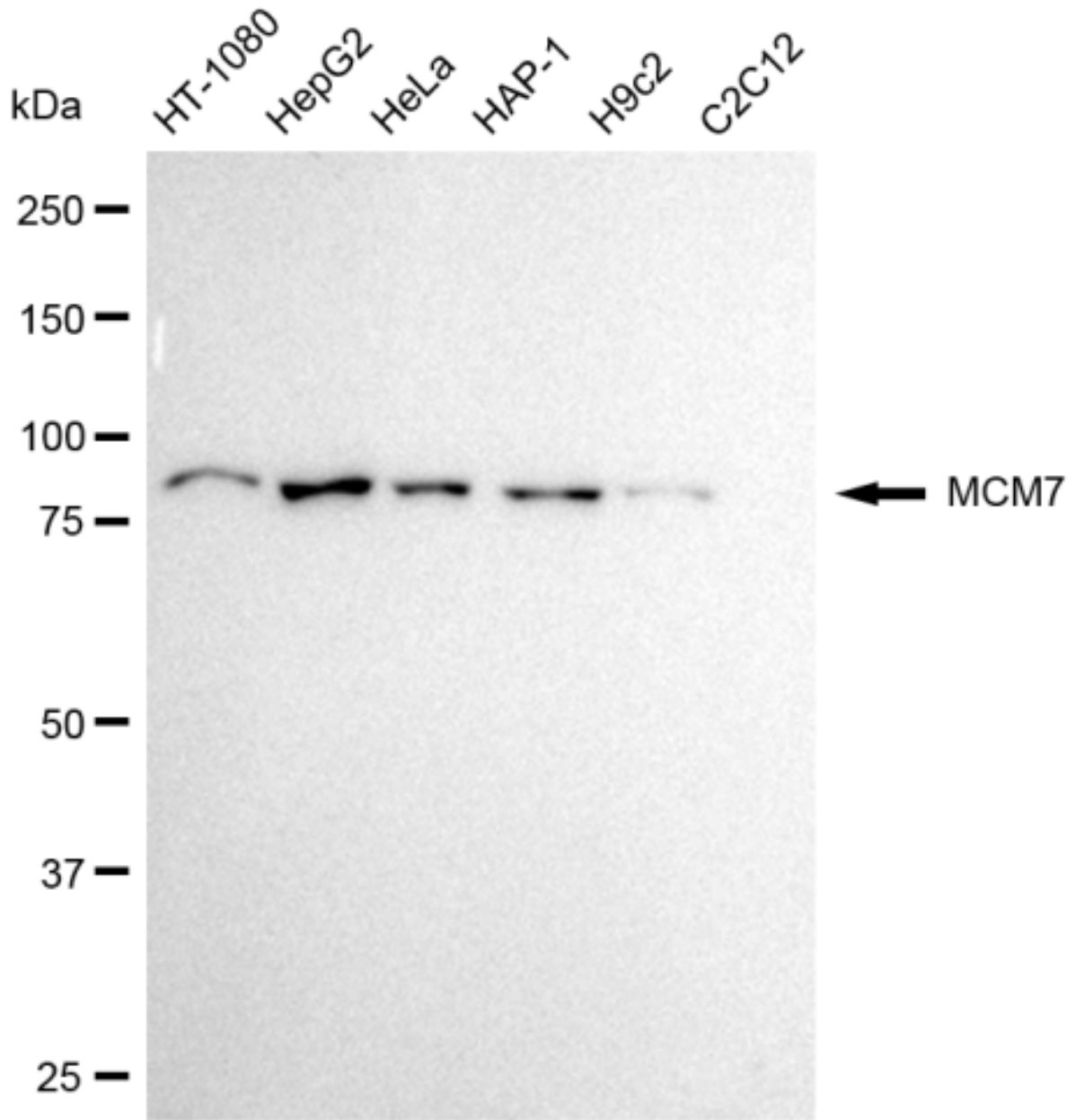
For general and specific antibody protocols please visit our website. Read all instructions before using this product.



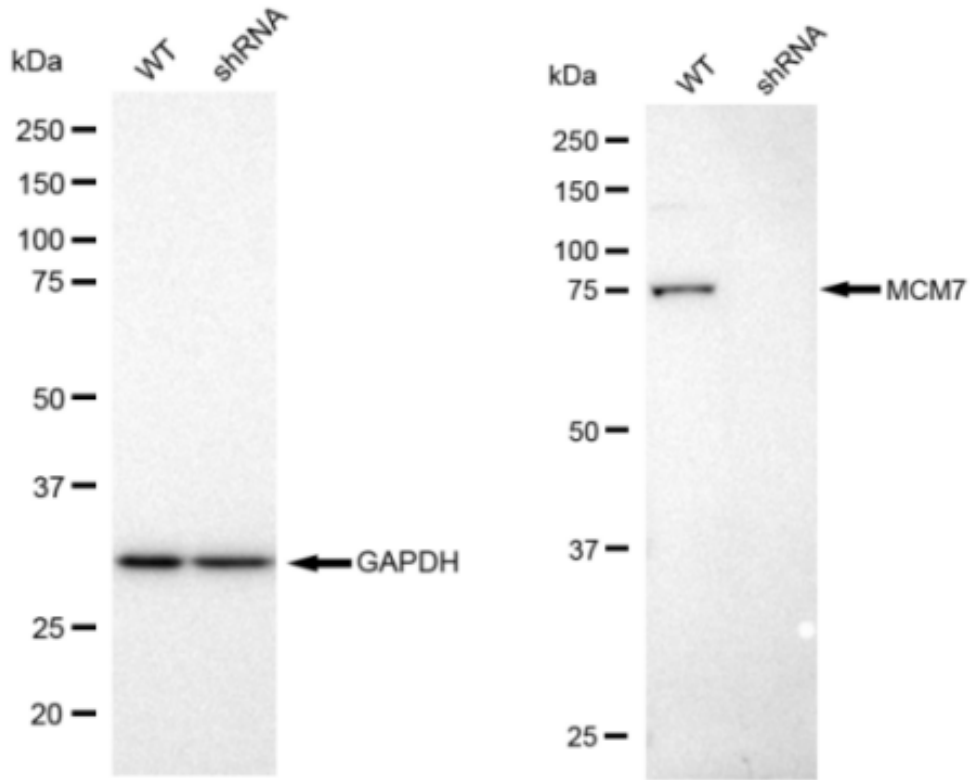
Flow cytometric analysis of MCM7 expression in HepG2 cells using MCM7 antibody 1:2,000. Green, isotype control; red, MCM7.



Immunocytochemical staining of HepG2 cells with MCM7 antibody 1:1,000. Nuclei were stained blue with DAPI; MCM7 was stained magenta with Alexa Fluor® 647. Images were taken using Leica stellaris 5. Protein abundance based on laser Intensity and smart gain: Medium. Scale bar: 20  $\mu\text{m}$ .



Western blotting analysis using anti-MCM7 antibody 1:5,000 and HRP-conjugated goat anti-rabbit secondary antibody 1:50,000 respectively. Image was developed using FeQ™ ECL Substrate Kit .



Western blotting analysis using anti-MCM7 antibody 1:5,000 and HRP-conjugated goat anti-rabbit secondary antibody 1:50,000 respectively. Image was developed using FeQ™ ECL Substrate Kit .