



SunLong Biotech Co.,LTD
Tel: 0086-571- 56623320 Fax:0086-571- 56623318
E-mail:sales@sunlongbiotech.com
www.sunlongbiotech.com

[KD-Validated] Anti-MCM5 Rabbit Monoclonal Antibody

Cat No.: KD-10594

Aliases:

MCM5; Minichromosome Maintenance Complex Component 5; CDC46; DNA Replication Licensing Factor MCM5; CDC46 Homolog; P1-CDC46; MCM5 Minichromosome Maintenance Deficient 5, Cell Division Cycle 46 (*S. Cerevisiae*); Minichromosome Maintenance Deficient (*S. Cerevisiae*) 5 (Cell Division Cycle 46); MCM5 Minichromosome Maintenance Deficient 5, Cell Division Cycle 46; Minichromosome Maintenance Deficient 5 (Cell Division Cycle 46); EC 3.6.4.12; MGORS8

Background:

UniProt Entry: [P33992](#);NCBI Gene Entry: [4174](#)

Application Information

Molecular Weight: Predicted, 82 kDa, observed, 82 kDa Clonality: Rabbit monoclonal antibody Clone ID: 24GB4965 Species Reactivity: Human, Mouse, Rat Applications Tested: Western Blotting (WB), Flow Cytometry (FCM)

Immunogen

A synthesized peptide derived from human MCM5

Isotype

Rabbit IgG

Storage Buffer

Supplied in PBS (pH 7.4) containing 50% glycerol, and 0.02% sodium azide.

Storage

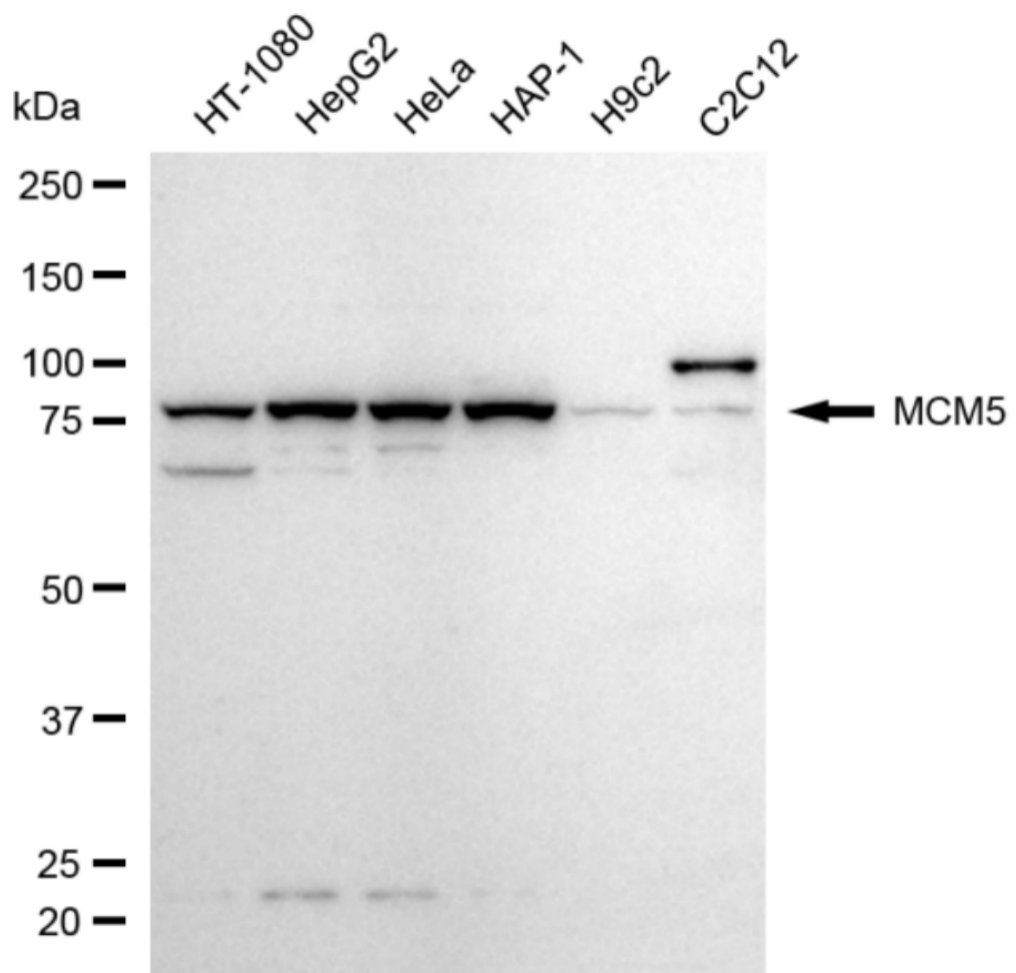
Store at -20 °C for one year.

Recommended Dilutions

Western Blotting (WB): 1:1,000-1:5,000 Flow Cytometry (FCM): 1:2,000

Protocols

For general and specific antibody protocols please visit our website. Read all instructions before using this product.



Western blotting analysis using anti-MCM5 antibody 1:5,000 and HRP-conjugated goat anti-rabbit secondary antibody 1:20,000 respectively. Image was developed using NaQ™ ECL Substrate Kit 1:5,000 and HRP-conjugated goat anti-rabbit secondary antibody 1:20,000 respectively. Image was developed using NaQ™ ECL Substrate Kit 1:2,000. Green, isotype control; red, MCM5.