



SunLong Biotech Co.,LTD
Tel: 0086-571- 56623320 Fax:0086-571- 56623318
E-mail:sales@sunlongbiotech.com
www.sunlongbiotech.com

[KD-Validated] Anti-MCM3 Rabbit Monoclonal Antibody

Cat No.: KD-10593

Aliases:

MCM3; Minichromosome Maintenance Complex Component 3; DNA Polymerase Alpha Holoenzyme-Associated Protein P1; DNA Replication Licensing Factor MCM3; RLF Subunit Beta; P1-MCM3; P102; MCM3 Minichromosome Maintenance Deficient 3 (S. Cerevisiae); Minichromosome Maintenance Deficient (S. Cerevisiae) 3; MCM3 Minichromosome Maintenance Deficient 3; Replication Licensing Factor, Beta Subunit; Minichromosome Maintenance Deficient 3; Cervical Cancer Proto-Oncogene 5; DNA Replication Factor MCM3; HR1f Beta Subunit; EC 3.6.4.12; HCC5; P1.H; RLFB

Background:

UniProt Entry: [P25205](#);NCBI Gene Entry: [4172](#)

Application Information

Molecular Weight: Predicted, 91 kDa, observed, 100 kDa Clonality: Rabbit monoclonal antibody Clone ID: 23GB2490 Species Reactivity: Human, Mouse, Rat Applications Tested: Western Blotting (WB), Immunocytochemistry (IC)

Immunogen

A synthesized peptide derived from human MCM3

Isotype

Rabbit IgG

Storage Buffer

Supplied in PBS (pH 7.4) containing 50% glycerol, and 0.02% sodium azide.

Storage

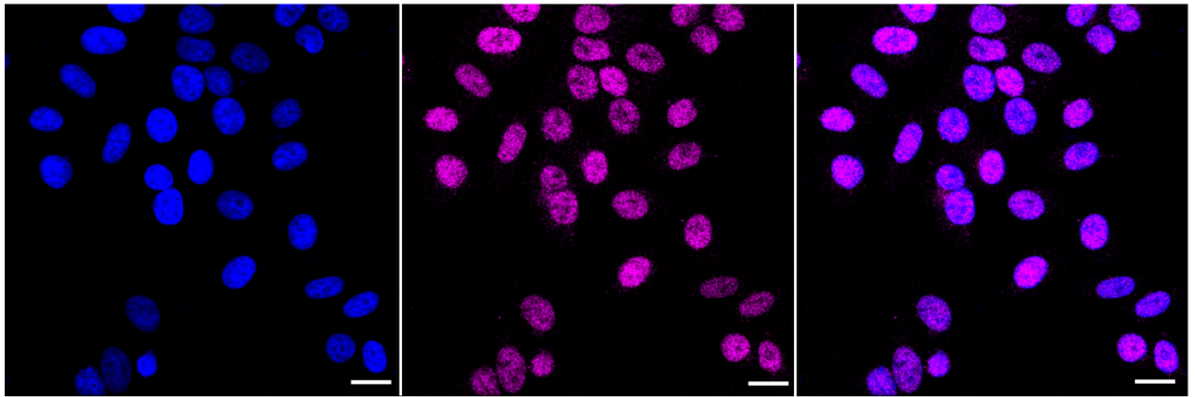
Store at -20 °C for one year.

Recommended Dilutions

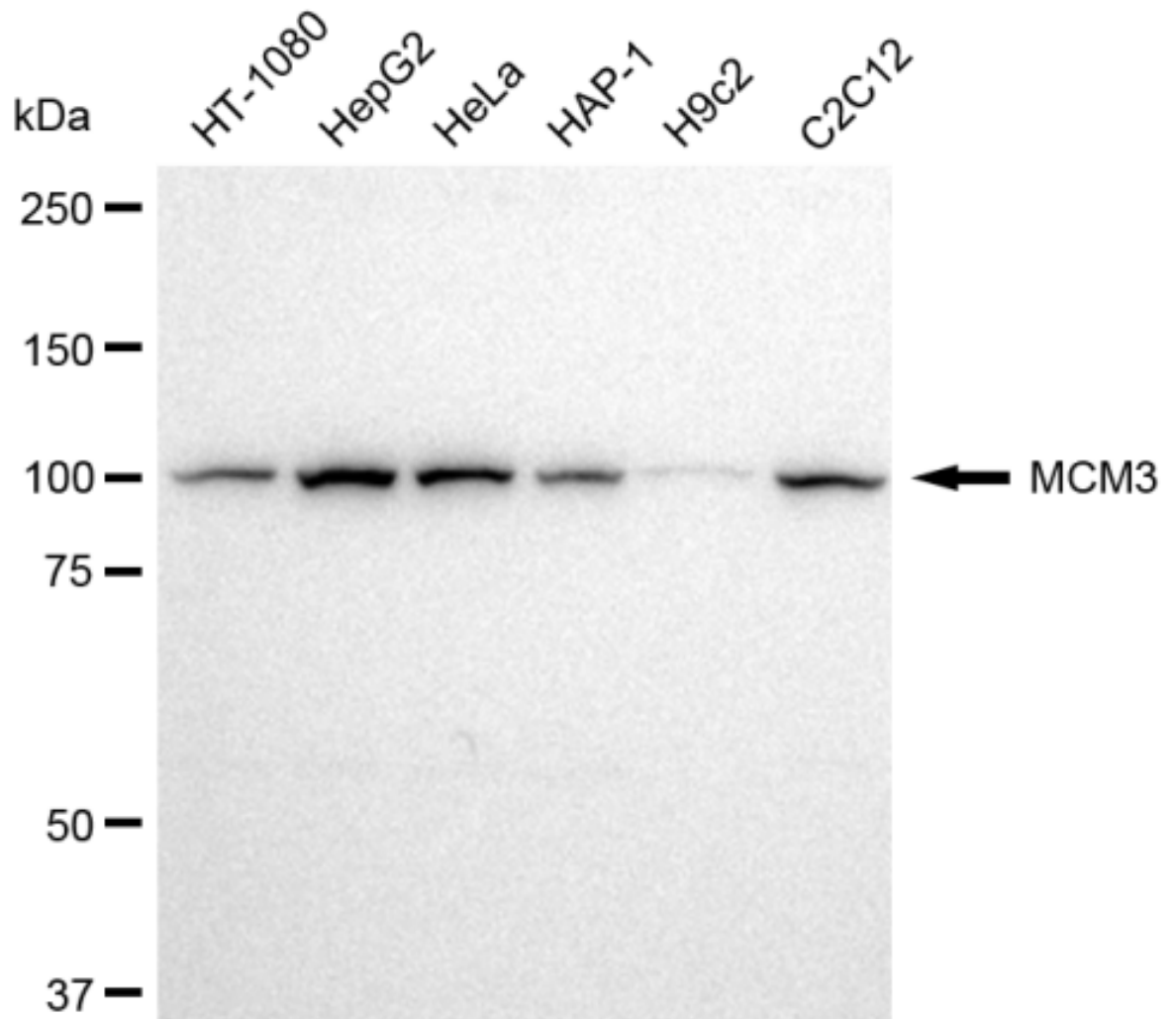
Western Blotting (WB): 1:1,000-1:5,000 Immunocytochemistry (IC): 1:1,000

Protocols

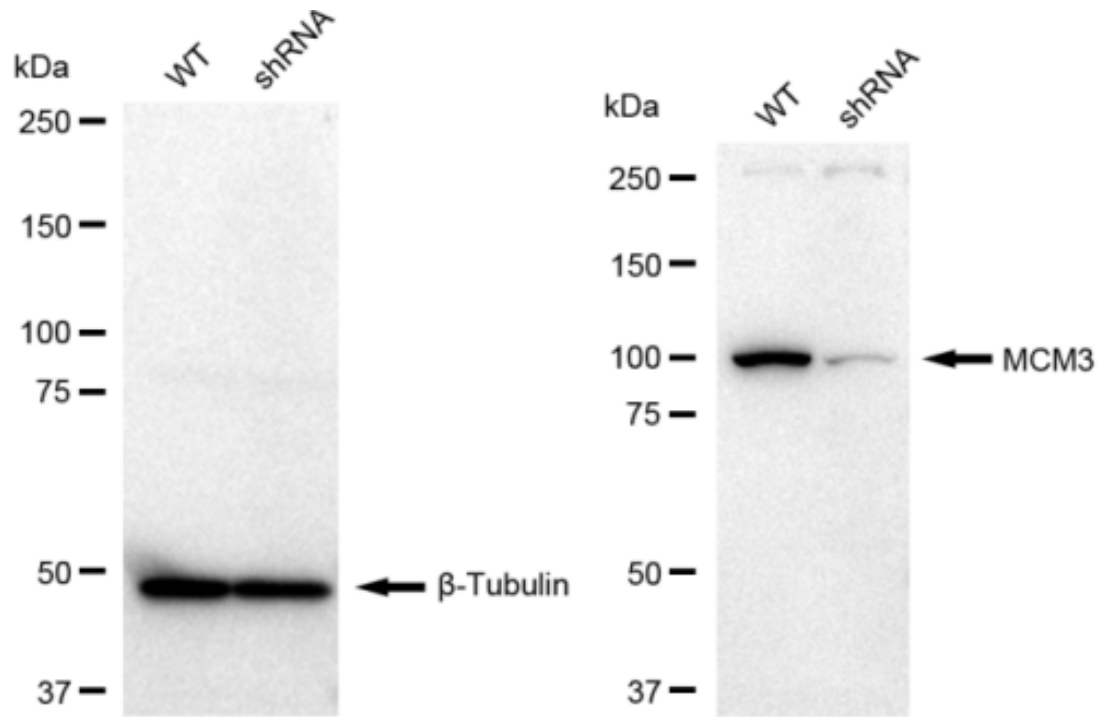
For general and specific antibody protocols please visit our website. Read all instructions before using this product.



Immunocytochemical staining of HepG2 cells with MCM3 antibody 1:1,000. Nuclei were stained blue with DAPI; MCM3 was stained magenta with Alexa Fluor® 647. Images were taken using Leica stellaris 5. Protein abundance based on laser Intensity and smart gain: Medium. Scale bar: 20 µm.



Western blotting analysis using anti-MCM3 antibody 1:5,000 and HRP-conjugated goat anti-rabbit secondary antibody 1:20,000 respectively. Image was developed using FeQ™ ECL Substrate Kit .



Western blotting analysis using anti-MCM3 antibody 1:5,000 and HRP-conjugated goat anti-rabbit secondary antibody 1:20,000 respectively. Image was developed using FeQ™ ECL Substrate Kit .