



SunLong Biotech Co.,LTD
Tel: 0086-571- 56623320 Fax:0086-571- 56623318
E-mail:sales@sunlongbiotech.com
www.sunlongbiotech.com

[KD-Validated] Anti-CD146 Rabbit Monoclonal Antibody

Cat No.: KD-10592

Aliases:

MCAM; Melanoma Cell Adhesion Molecule; MUC18; METCAM; HEMCAM; CD146; S-Endo 1 Endothelial-Associated Antigen; Melanoma-Associated Antigen MUC18; Cell Surface Glycoprotein MUC18; Cell Surface Glycoprotein P1H12; Melanoma-Associated Antigen A32; Gicerin; MelCAM; Melanoma Adhesion Molecule; CD146 Antigen; MELCAM

Background:

UniProt Entry: [P43121](#);NCBI Gene Entry: [4162](#)

Application Information

Molecular Weight: Predicted, 72 kDa, observed, 100 kDa Clonality: Rabbit monoclonal antibody Clone ID: 23GB2705 Spncies Reactivity: Human, Rat Applications Tested: Western Blotting (WB), Flow Cytometry (FCM), Immunocytochemistry (IC)

Immunogen

A synthesized peptide derived from human CD146

Isotype

Rabbit IgG

Storage Buffer

Supplied in PBS (pH 7.4) containing 50% glycerol, and 0.02% sodium azide.

Storage

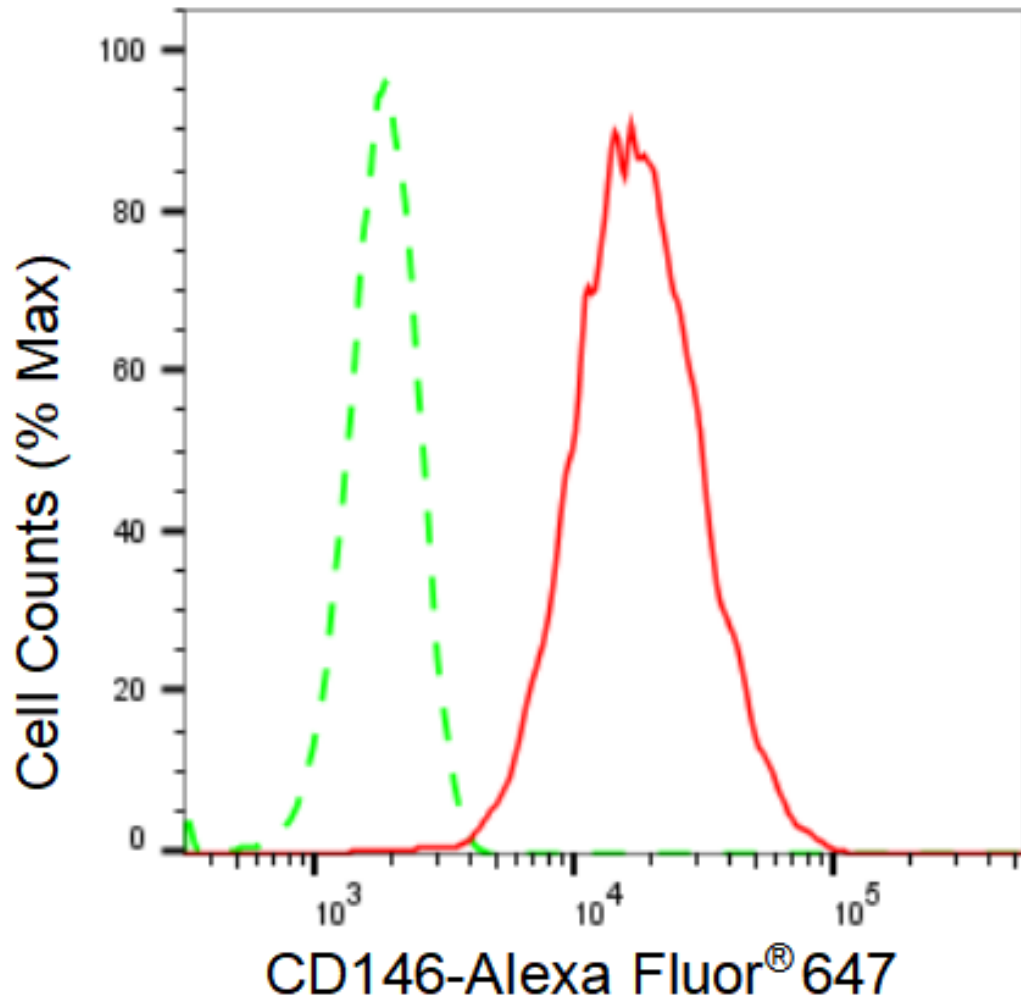
Store at -20 °C for one year.

Recommended Dilutions

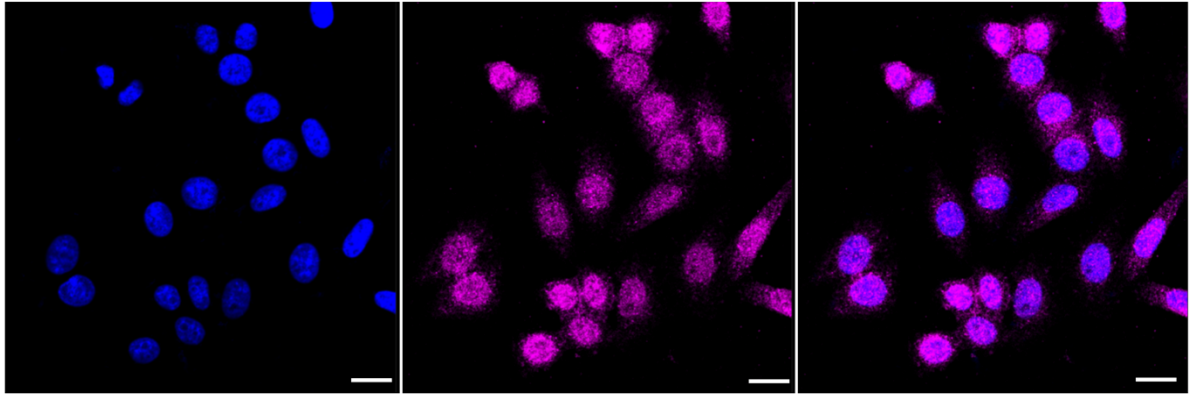
Western Blotting (WB): 1:1,000-1:5,000 Flow Cytometry (FCM): 1:2,000
Immunocytochemistry (IC): 1:1,000

Protocols

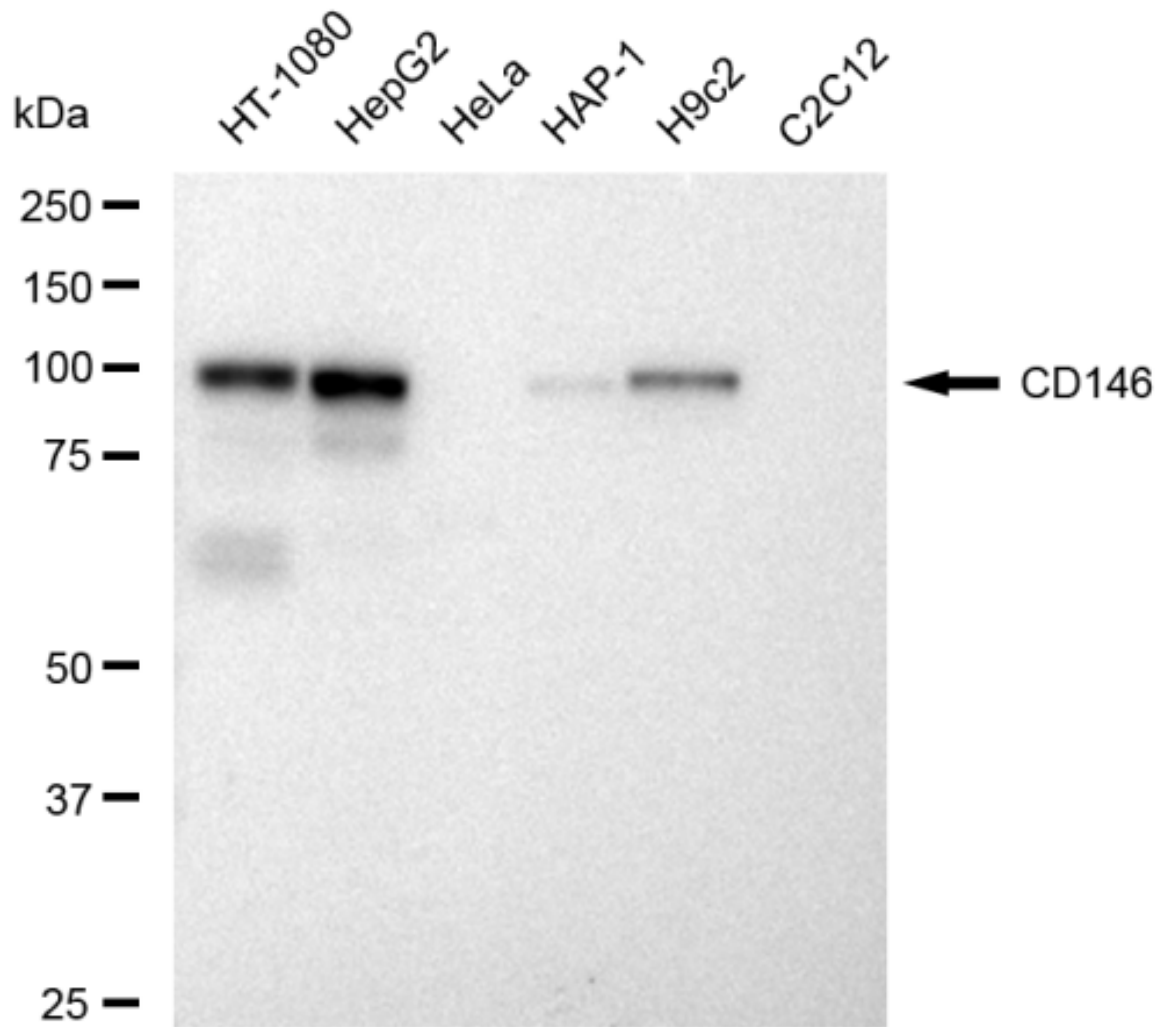
For general and specific antibody protocols please visit our website. Read all instructions before using this product.



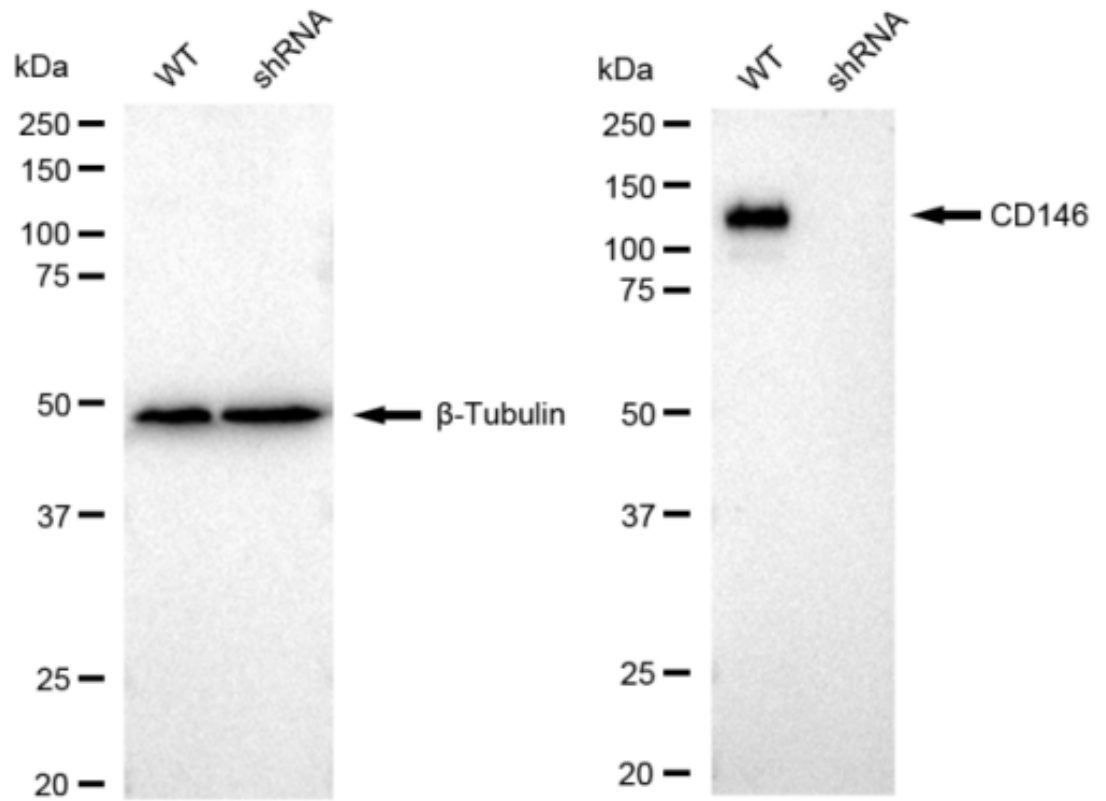
Flow cytometric analysis of CD146 expression in HepG2 cells using CD146 antibody 1:2,000. Green, isotype control; red, CD146.



Immunocytochemical staining of HepG2 cells with CD146 antibody 1:1,000. Nuclei were stained blue with DAPI; CD146 was stained magenta with Alexa Fluor® 647. Images were taken using Leica stellaris 5. Protein abundance based on laser Intensity and smart gain: Medium. Scale bar: 20 μ m.



Western blotting analysis using anti-CD146 antibody 1:5,000 and HRP-conjugated goat anti-rabbit secondary antibody 1:20,000 respectively. Image was developed using FeQ™ ECL Substrate Kit .



Western blotting analysis using anti-CD146 antibody 1:5,000 and HRP-conjugated goat anti-rabbit secondary antibody 1:20,000 respectively. Image was developed using FeQ™ ECL Substrate Kit .