



SunLong Biotech Co.,LTD
Tel: 0086-571- 56623320 Fax:0086-571- 56623318
E-mail:sales@sunlongbiotech.com
www.sunlongbiotech.com

[KD-Validated] Anti-Methyl-CpG Binding Domain Protein 2 Rabbit Monoclonal Antibody

Cat No.: KD-10591

Aliases:

MBD2; Methyl-CpG Binding Domain Protein 2; Methyl-CpG-Binding Domain Protein 2; Demethylase; DMTase; Methyl-CpG-Binding Protein MBD2; NY-CO-41

Background:

UniProt Entry: [Q9UBB5](#);NCBI Gene Entry: [8932](#)

Application Information

Molecular Weight: Predicted, 43 kDa, observed, 43 kDa Clonality: Rabbit monoclonal antibody Clone ID: 24GB4570 Species Reactivity: Human, Mouse, Rat Applications Tested: Western Blotting (WB), Flow Cytometry (FCM)

Immunogen

A synthesized peptide derived from human MBD2

Isotype

Rabbit IgG

Storage Buffer

Supplied in PBS (pH 7.4) containing 50% glycerol, and 0.02% sodium azide.

Storage

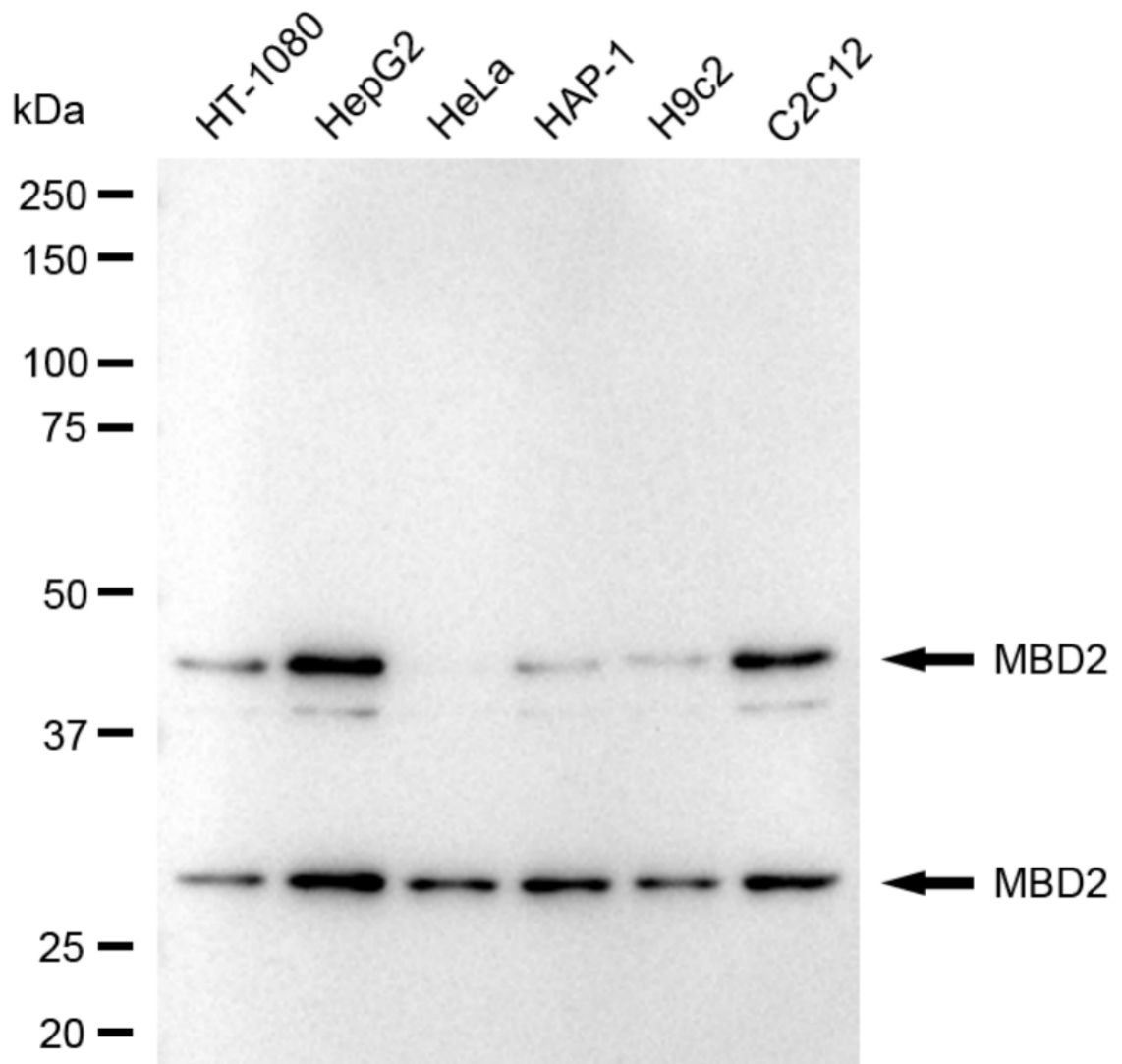
Store at -20 °C for one year.

Recommended Dilutions

Western Blotting (WB): 1:1,000-1:5,000 Flow Cytometry (FCM): 1:2,000

Protocols

For general and specific antibody protocols please visit our website. Read all instructions before using this product.



Western blotting analysis using anti-MBD2 antibody 1:5,000 and HRP-conjugated goat anti-rabbit secondary antibody 1:20,000 respectively. Image was developed using NaQ™ ECL Substrate Kit 1:5,000 and HRP-conjugated goat anti-rabbit secondary antibody

1:20,000 respectively. Image was developed using NaQ™ ECL Substrate Kit 1:2,000.
Green, isotype control; red, MBD2.