



SunLong Biotech Co.,LTD  
Tel: 0086-571- 56623320 Fax:0086-571- 56623318  
E-mail:sales@sunlongbiotech.com  
www.sunlongbiotech.com

## **[KD-Validated] Anti-Methyl-CpG Binding Domain Protein 2 Rabbit Monoclonal Antibody**

Cat No.: KD-10590

### **Aliases:**

Methyl-CpG Binding Domain Protein 2; Methyl-CpG-Binding Domain Protein 2;  
Demethylase; DMTase; Methyl-CpG-Binding Protein MBD2; NY-CO-41

### **Background:**

UniProt Entry: [Q9UBB5](#);NCBI Gene Entry: [8932](#)

### **Application Information**

Molecular Weight: Predicted, 43 kDa, observed, 29,43 kDa Clonality: Rabbit monoclonal antibody Clone ID: 24GB460 Species Reactivity: Human, Mouse, Rat Applications Tested: Western Blotting (WB), Flow Cytometry (FCM), Immunocytochemistry (IC)

### **Immunogen**

A synthesized peptide derived from human MBD2

### **Isotype**

Rabbit IgG

### **Storage Buffer**

Supplied in PBS (pH 7.4) containing 50% glycerol, and 0.02% sodium azide.

### **Storage**

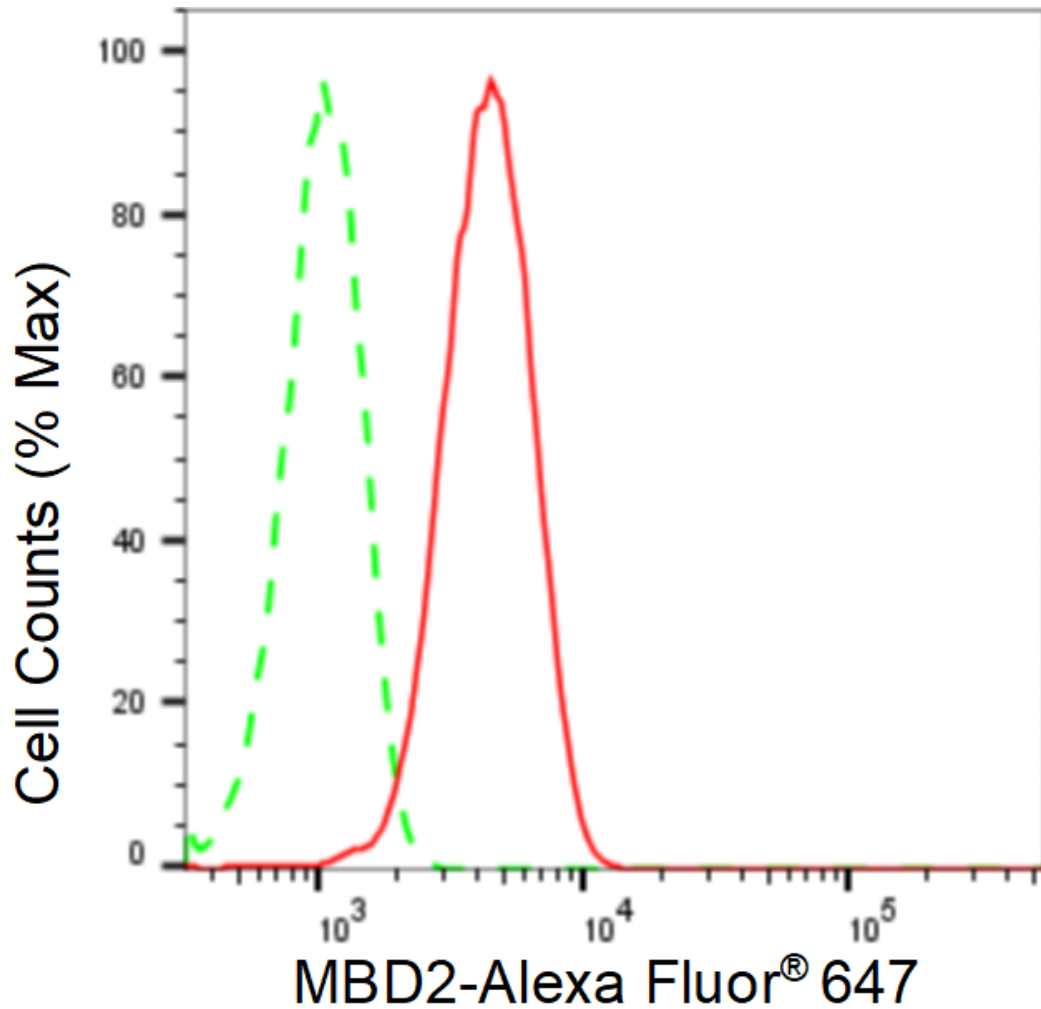
Store at -20 °C for one year.

#### Recommended Dilutions

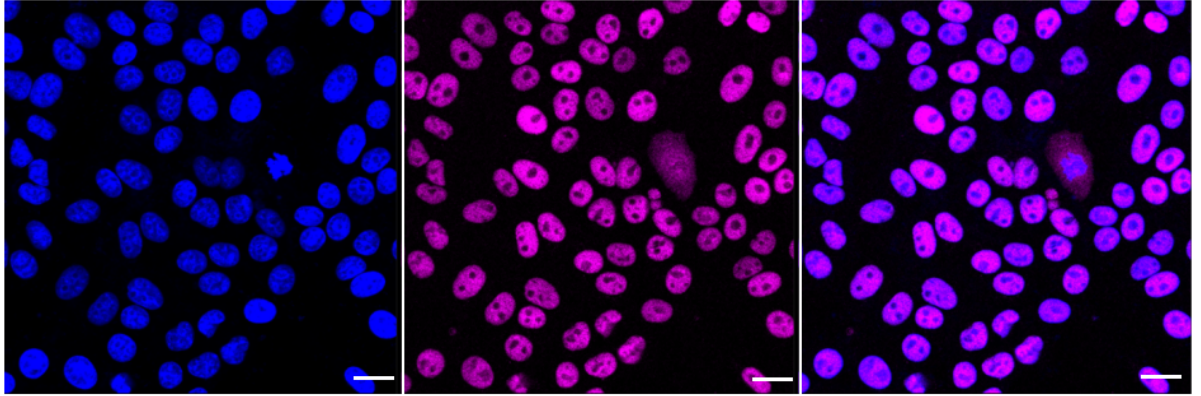
Western Blotting (WB): 1:1,000-1:10,000 Flow Cytometry (FCM): 1:2,000  
Immunocytochemistry (IC): 1:1,000

#### Protocols

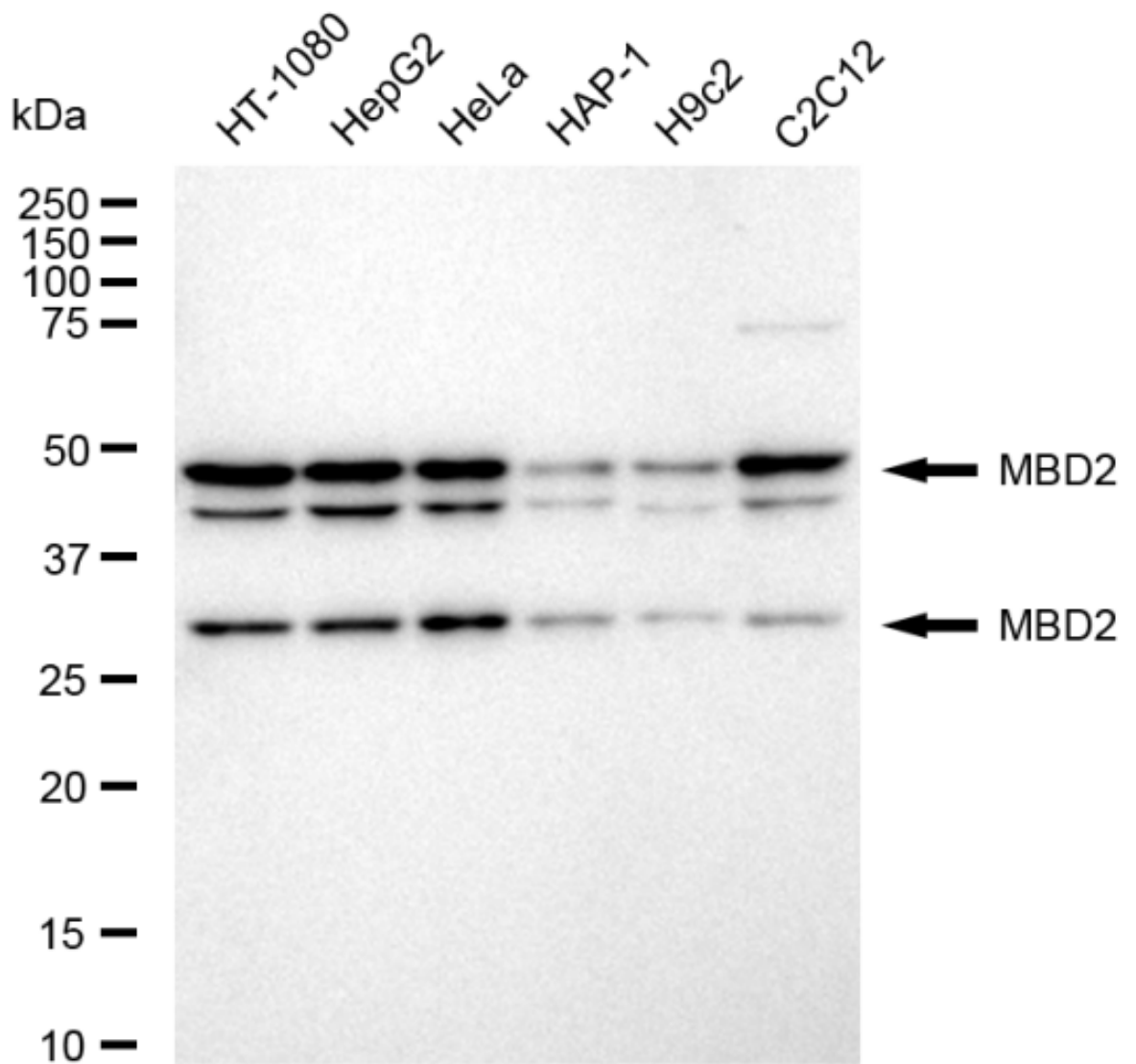
For general and specific antibody protocols please visit our website. Read all instructions before using this product.



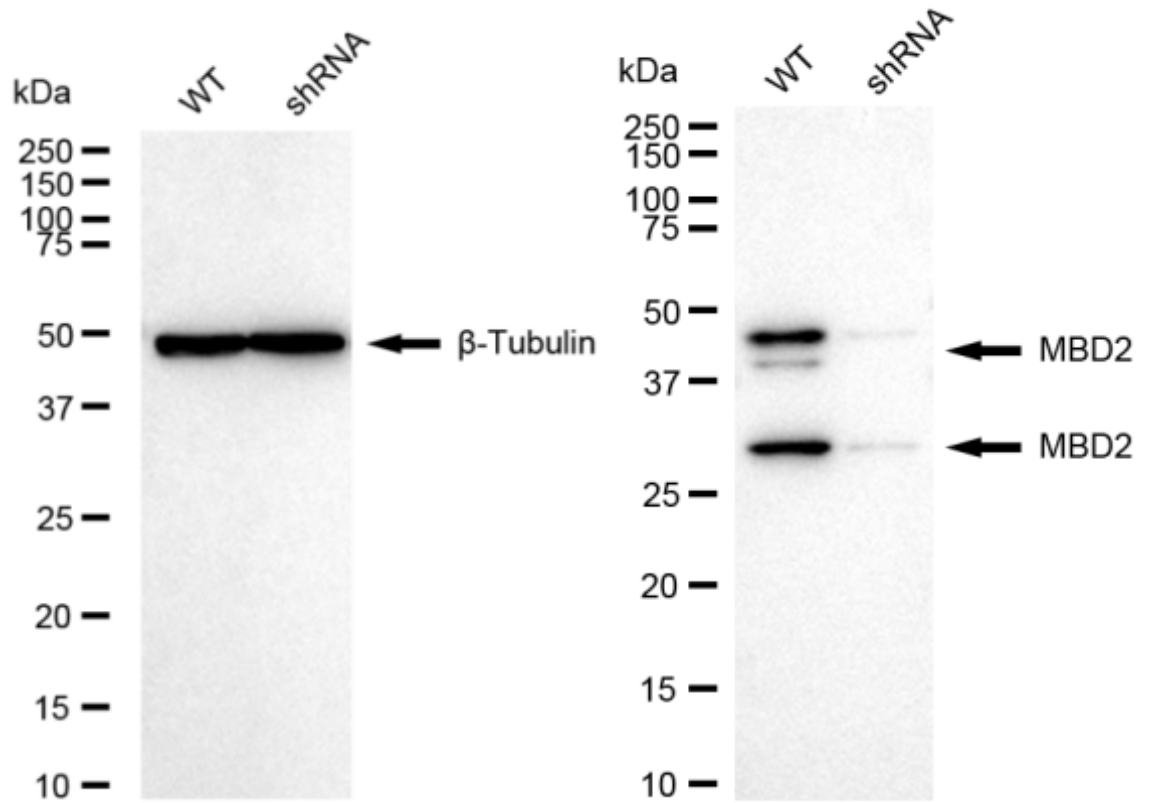
Flow cytometric analysis of MBD2 expression in HepG2 cells using MBD2 antibody 1:2,000. Green, isotype control; red, MBD2.



Immunocytochemical staining of HepG2 cells with anti-MBD2 antibody 1:1,000. Nuclei were stained blue with DAPI; MBD2 was stained magenta with Alexa Fluor® 647. Images were taken using Leica stellaris 5. Protein abundance based on laser Intensity and smart gain: Medium. Scale bar: 20  $\mu\text{m}$ .



Western blotting analysis using anti-MBD2 antibody 1:10,000 and HRP-conjugated goat anti-rabbit secondary antibody 1:20,000 respectively. Image was developed using FeQ™ ECL Substrate Kit .



Western blotting analysis using anti-MBD2 antibody 1:10,000 and HRP-conjugated goat anti-rabbit secondary antibody 1:20,000 respectively. Image was developed using NaQ™ ECL Substrate Kit .