



SunLong Biotech Co.,LTD
Tel: 0086-571- 56623320 Fax:0086-571- 56623318
E-mail:sales@sunlongbiotech.com
www.sunlongbiotech.com

[KD-Validated] Anti-Methyl-CpG Binding Domain Protein 1 Rabbit Monoclonal Antibody

Cat No.: KD-10589

Aliases:

Methyl-CpG Binding Domain Protein 1; CXXC3; PCM1; Protein Containing Methyl-CpG-Binding Domain 1; Methyl-CpG-Binding Domain Protein 1; CXXC-Type Zinc Finger Protein 3; Protein Containing MBD 1; The Regulator Of Fibroblast Growth Factor 2 (FGF-2) Transcription; Methyl-CpG-Binding Protein MBD1; RFT

Background:

UniProt Entry: [Q9UIS9](#);NCBI Gene Entry: [4152](#)

Application Information

Molecular Weight: Predicted, 67 kDa, observed, 70-80 kDa Clonality: Rabbit monoclonal antibody Clone ID: 24GB405 Spncies Reactivity: Human, Rat Applications Tested: Western Blotting (WB)

Immunogen

A synthesized peptide derived from human MBD1

Isotype

Rabbit IgG

Storage Buffer

Supplied in PBS (pH 7.4) containing 50% glycerol, and 0.02% sodium azide.

Storage

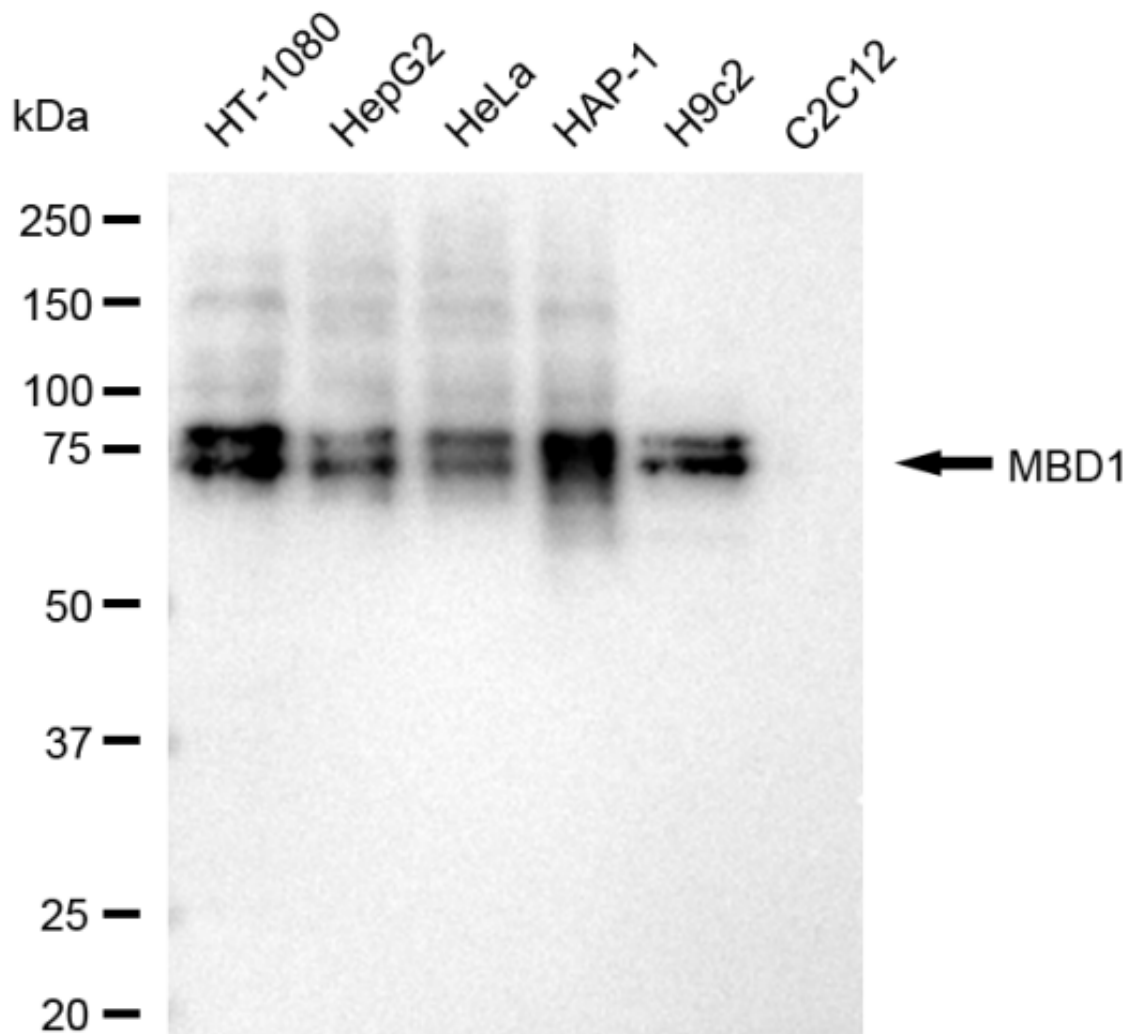
Store at -20 °C for one year.

Recommended Dilutions

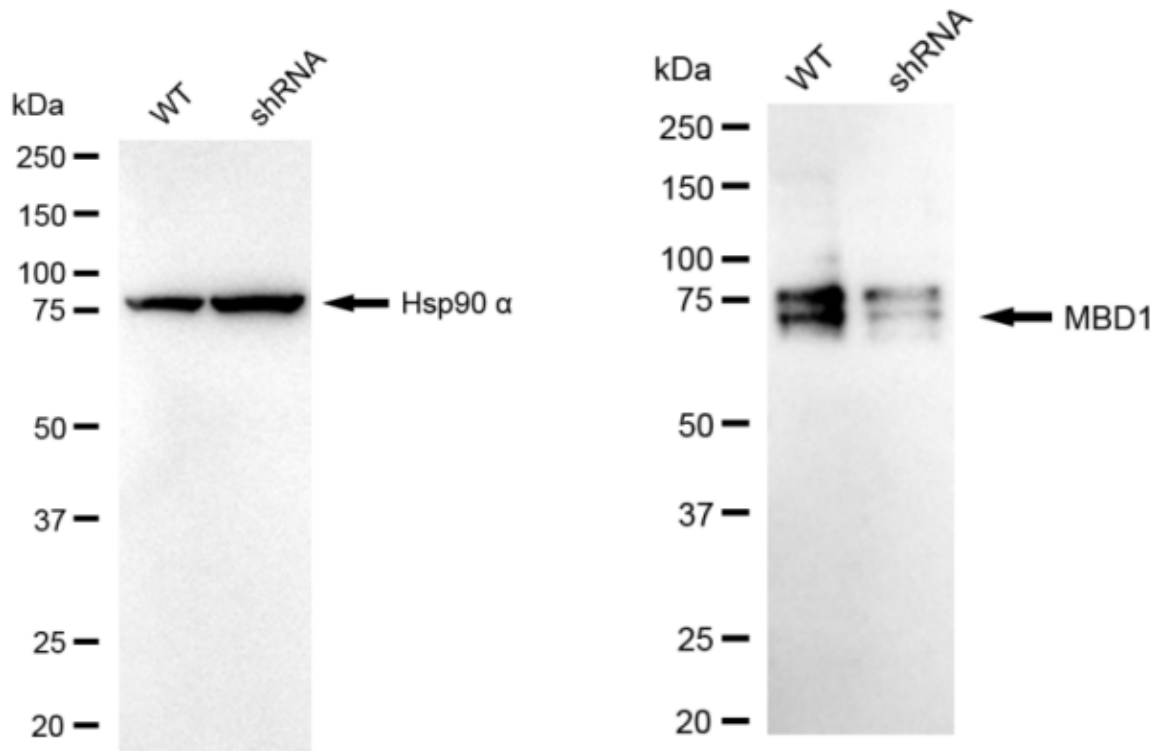
Western Blotting (WB): 1:1,000-1:5,000

Protocols

For general and specific antibody protocols please visit our website. Read all instructions before using this product.



Western blotting analysis using anti-MBD1 antibody 1:5,000 and HRP-conjugated goat anti-rabbit secondary antibody 1:20,000 respectively. Image was developed using FeQ™ ECL Substrate Kit .



Western blotting analysis using anti-MBD1 antibody 1:5,000 and HRP-conjugated goat anti-rabbit secondary antibody 1:20,000 respectively. Image was developed using NaQ™ ECL Substrate Kit .