



SunLong Biotech Co.,LTD
Tel: 0086-571- 56623320 Fax:0086-571- 56623318
E-mail:sales@sunlongbiotech.com
www.sunlongbiotech.com

[KD-Validated] Anti-MARK2 Rabbit Monoclonal Antibody

Cat No.: KD-10587

Aliases:

Microtubule Affinity Regulating Kinase 2; Par1b; MAP/Microtubule Affinity-Regulating Kinase 2; ELKL Motif Kinase 1; PAR-1B; PAR-1; EMK1; Serine/Threonine-Protein Kinase MARK2; Ser/Thr Protein Kinase PAR-1B; PAR1 Homolog B; EC 2.7.11.1; EMK-1; Serine/Threonine Protein Kinase EMK; Testicular Tissue Protein Li 117; Protein-Serine/Threonine Kinase; Serine/Threonine Kinase; ELKL Motif Kinase; PAR1 Homolog; EC 2.7.11.26; EC 2.7.11; Par-1b

Background:

UniProt Entry: [Q7KZI7](#);NCBI Gene Entry: [2011](#)

Application Information

Molecular Weight: Predicted, 88 kDa, observed, 74 kDa Clonality: Rabbit monoclonal antibody Clone ID: 24GB675 Species Reactivity: Human, Mouse Applications Tested: Western Blotting (WB), Flow Cytometry (FCM), Immunocytochemistry (IC)

Immunogen

A synthesized peptide derived from human MARK2

Isotype

Rabbit IgG

Storage Buffer

Supplied in PBS (pH 7.4) containing 50% glycerol, and 0.02% sodium azide.

Storage

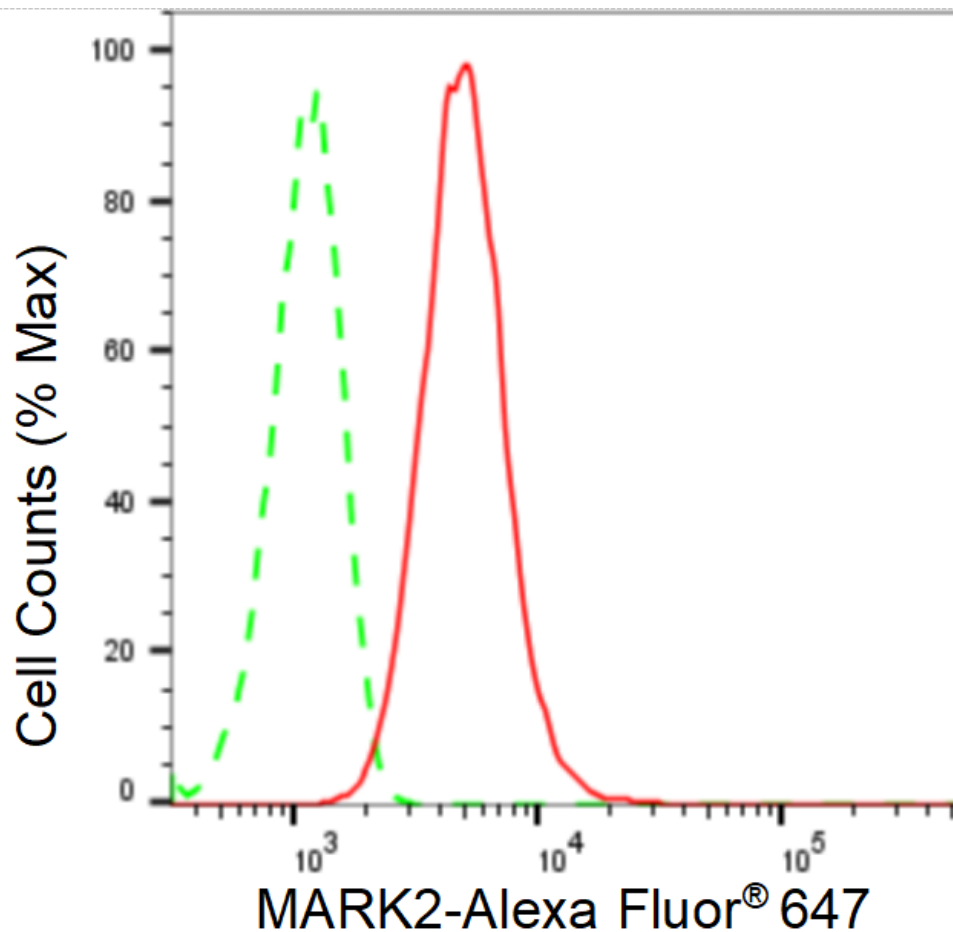
Store at -20 °C for one year.

Recommended Dilutions

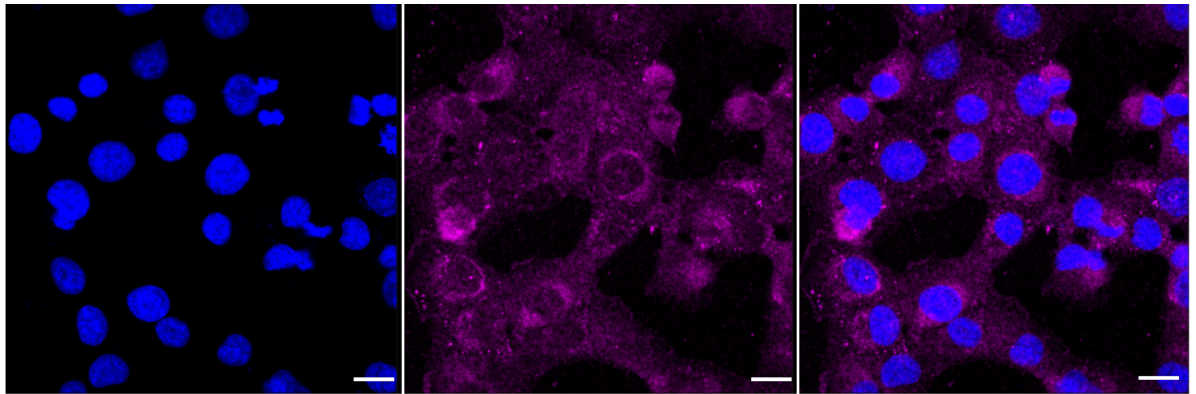
Western Blotting (WB): 1:1,000-1:5,000 Flow Cytometry (FCM): 1:2,000
Immunocytochemistry (IC): 1:1,000

Protocols

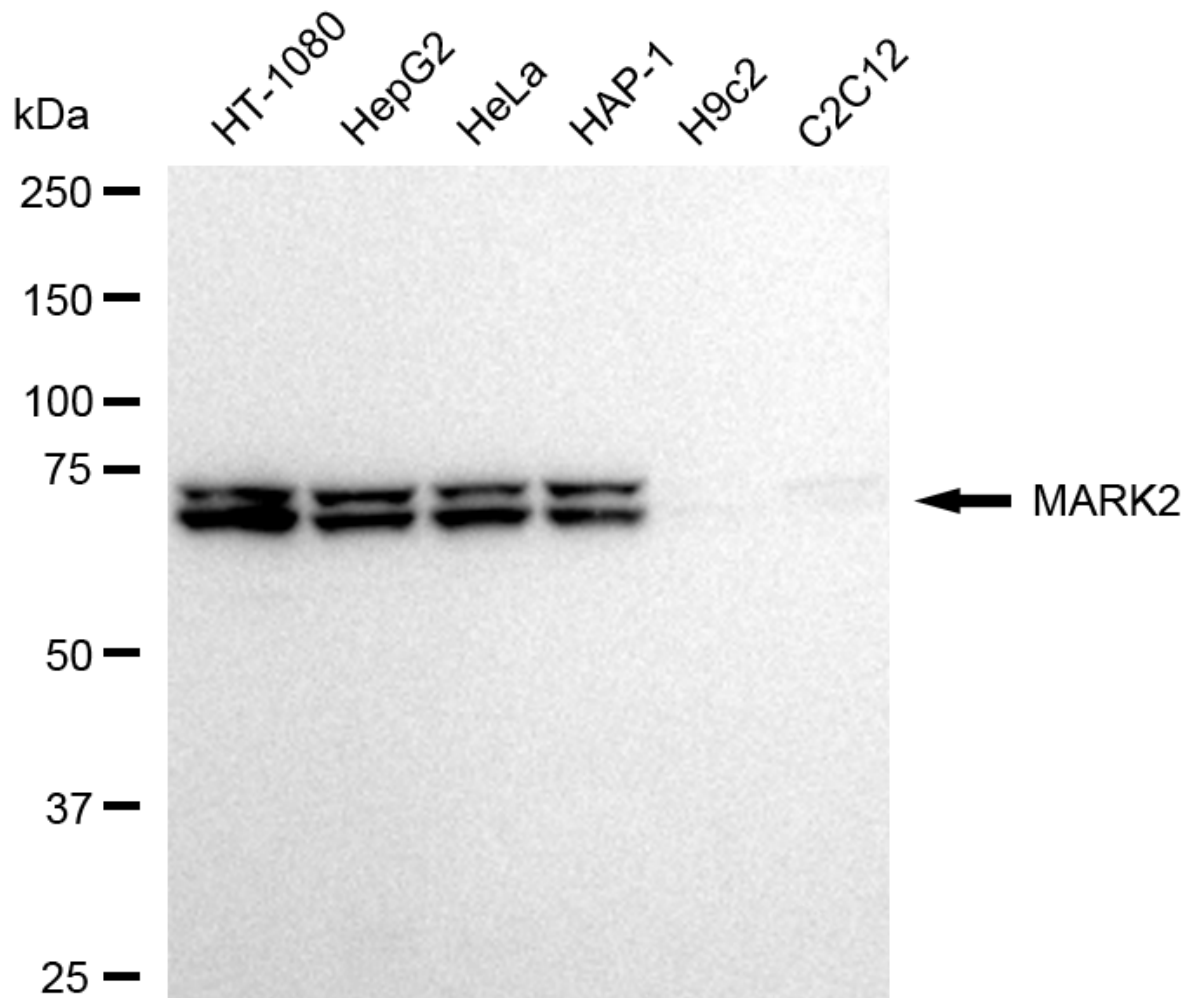
For general and specific antibody protocols please visit our website. Read all instructions before using this product.



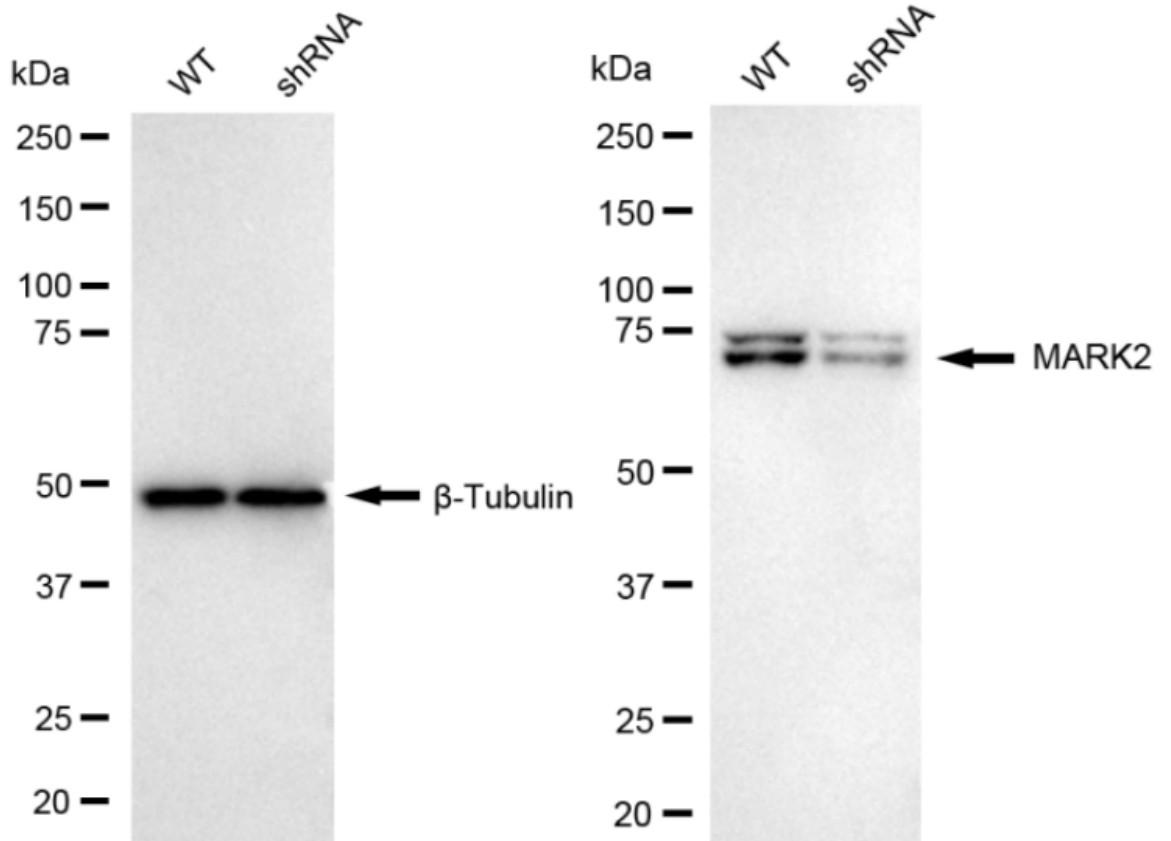
Flow cytometric analysis of MARK2 expression in HT-1080 cells using MARK2 antibody 1:2,000. Green, isotype control; red, MARK2.



Immunocytochemical staining of HT-1080 cells with anti-MARK2 antibody 1:1,000. Nuclei were stained blue with DAPI; MARK2 was stained magenta with Alexa Fluor® 647. Images were taken using Leica stellaris 5. Protein abundance based on laser Intensity and smart gain: Medium. Scale bar: 20 μ m.



Western blotting analysis using anti-MARK2 antibody 1:5,000 and HRP-conjugated goat anti-rabbit secondary antibody 1:20,000 respectively. Image was developed using FeQ™ ECL Substrate Kit .



Western blotting analysis using anti-MARK2 antibody 1:5,000 and HRP-conjugated goat anti-rabbit secondary antibody 1:20,000 respectively. Image was developed using NaQ™ ECL Substrate Kit .