



SunLong Biotech Co.,LTD
Tel: 0086-571- 56623320 Fax:0086-571- 56623318
E-mail:sales@sunlongbiotech.com
www.sunlongbiotech.com

[KD-Validated] Anti-MAPK activated protein kinase 2 Rabbit Monoclonal Antibody

Cat No.: KD-10585

Aliases:

MAPKAPK2; MAPK Activated Protein Kinase 2; MK2; Mitogen-Activated Protein Kinase-Activated Protein Kinase 2; MAP Kinase-Activated Protein Kinase 2; MAPKAP Kinase 2; EC 2.7.11.1; MAPKAP-K2; MK-2; MAPK-Activated Protein Kinase 2; MAPKAPK-2; EC 2.7.11

Background:

UniProt Entry: [P49137](#);NCBI Gene Entry: [9261](#)

Application Information

Molecular Weight: Predicted, 46 kDa, observed, 46 kDa Clonality: Rabbit monoclonal antibody Clone ID: 23GB2950 Species Reactivity: Human, Mouse, Rat Applications Tested: Western Blotting (WB), Flow Cytometry (FCM), Immunocytochemistry (IC)

Immunogen

A synthesized peptide derived from human MAPKAP Kinase 2

Isotype

Rabbit IgG

Storage Buffer

Supplied in PBS (pH 7.4) containing 50% glycerol, and 0.02% sodium azide.

Storage

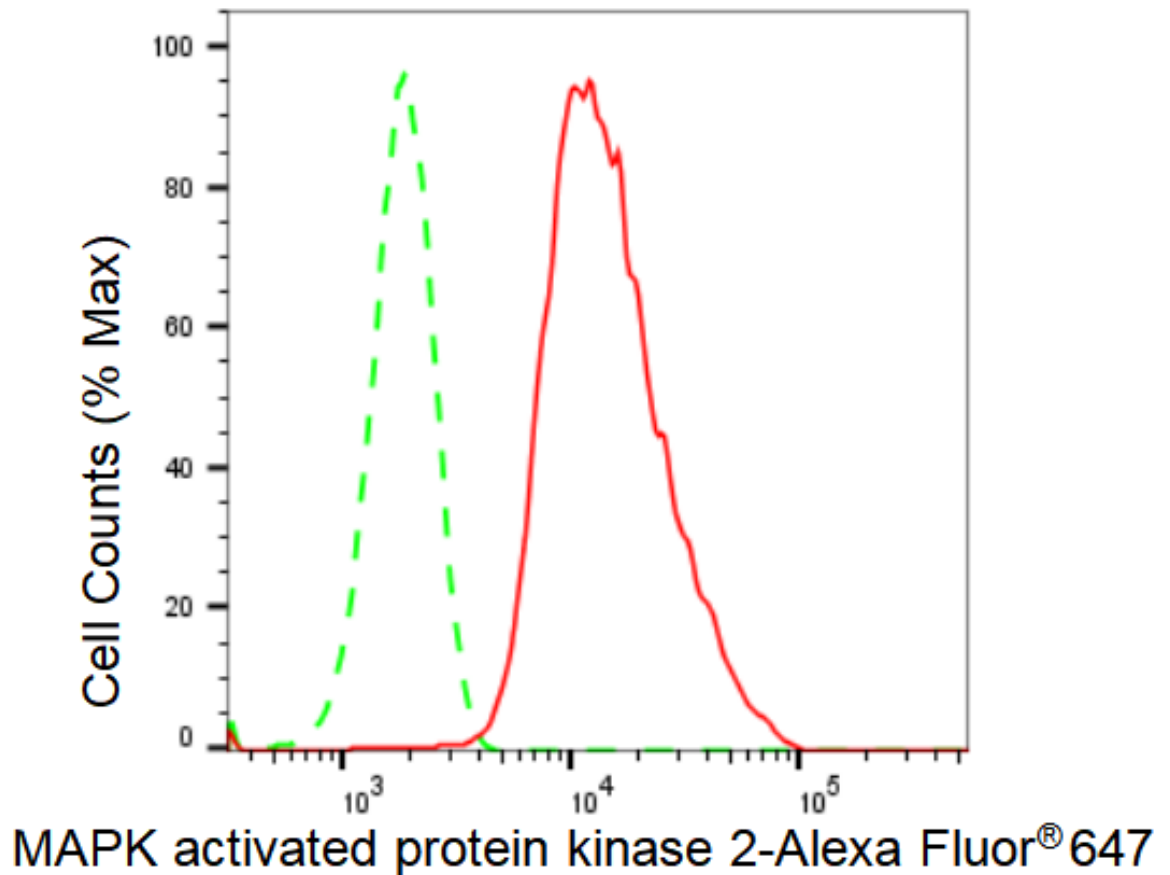
Store at -20 °C for one year.

Recommended Dilutions

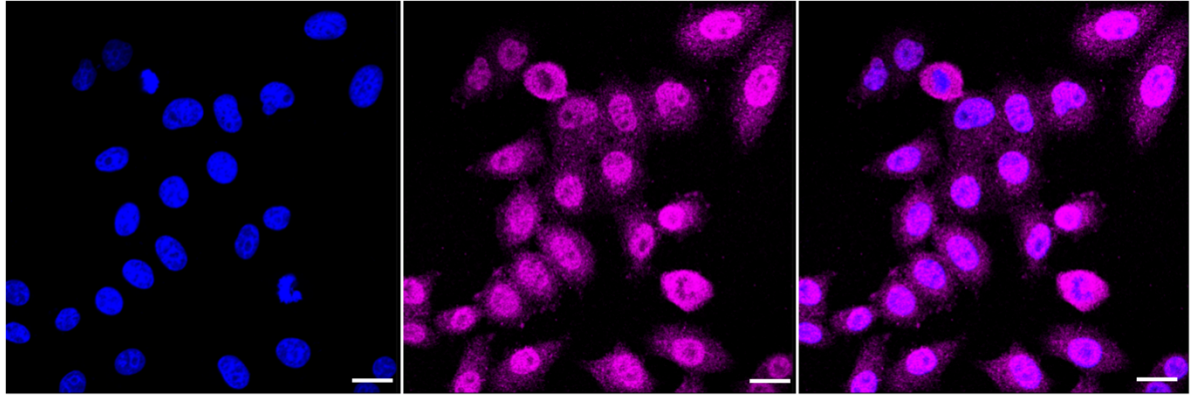
Western Blotting (WB): 1:1,000-1:5,000 Flow Cytometry (FCM): 1:2,000
Immunocytochemistry (IC): 1:1,000

Protocols

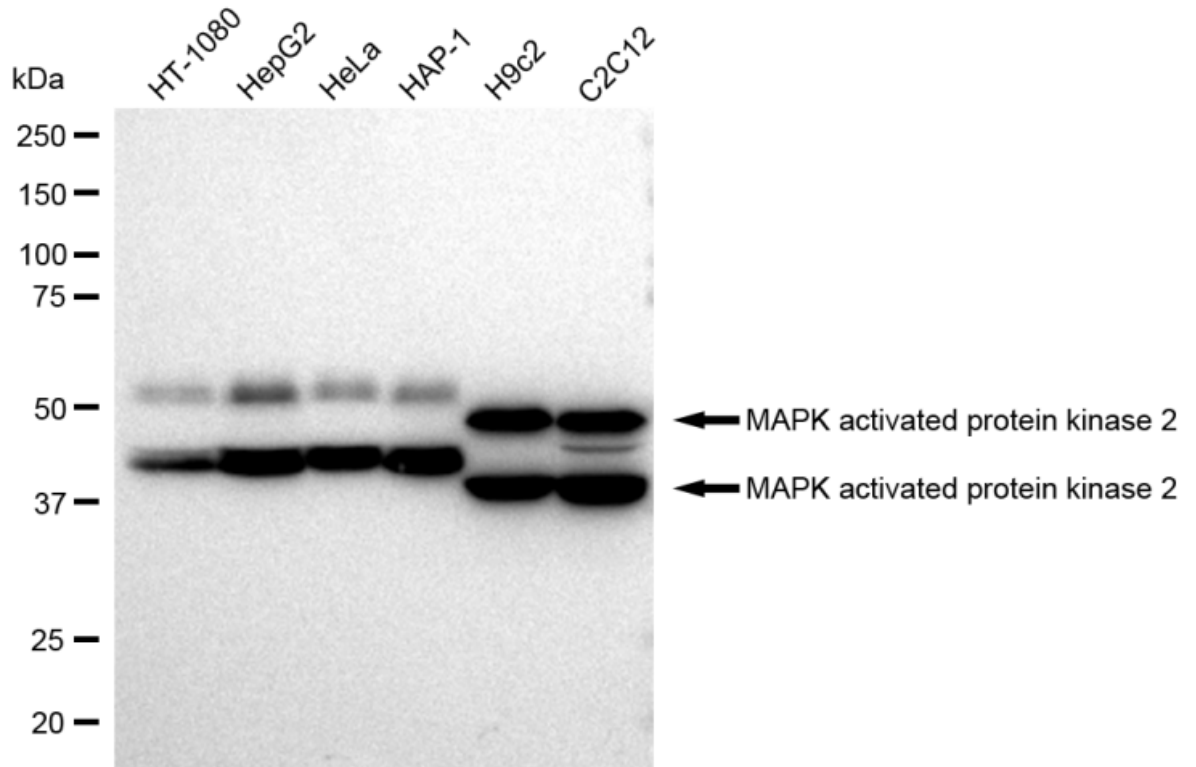
For general and specific antibody protocols please visit our website. Read all instructions before using this product.



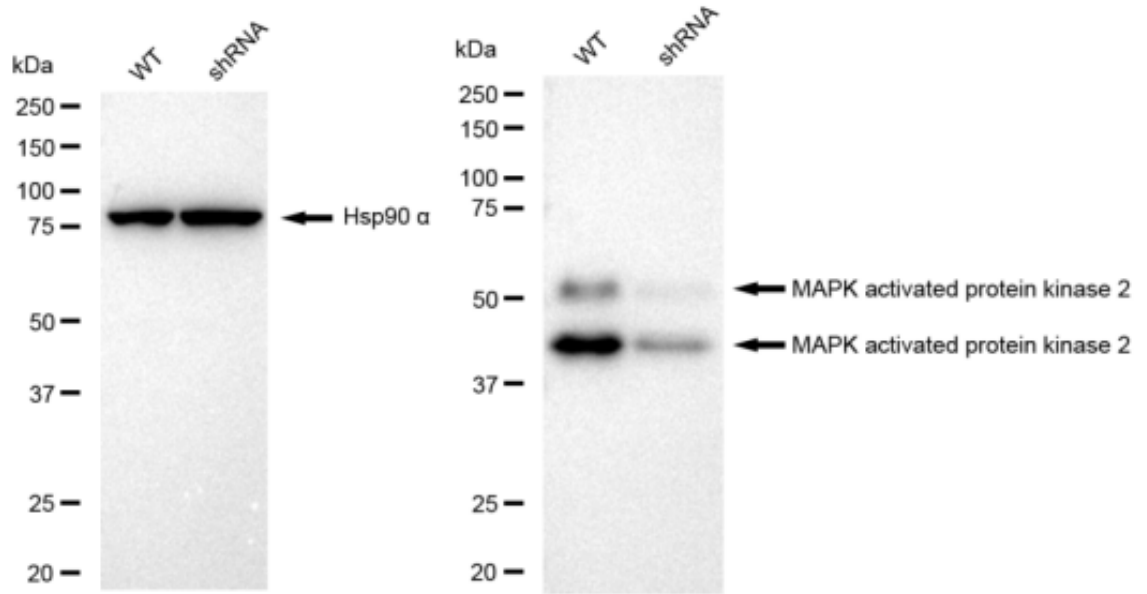
Flow cytometric analysis of MAPK activated protein kinase 2 expression in HepG2 cells using MAPK activated protein kinase 2 antibody 1:2,000. Green, isotype control; red, MAPK activated protein kinase 2.



Immunocytochemical staining of HepG2 cells with MAPK activated protein kinase 2 antibody 1:1,000. Nuclei were stained blue with DAPI; MAPK activated protein kinase 2 was stained magenta with Alexa Fluor® 647. Images were taken using Leica stellaris 5. Protein abundance based on laser Intensity and smart gain: Medium. Scale bar: 20 μ m.



Western blotting analysis using anti-MAPK activated protein kinase 2 antibody (KD-10585). Total cell lysates (30 μ g) from various cell lines were loaded and separated by SDS-PAGE. The blot was incubated with anti-MAPK activated protein kinase 2 antibody (KD-10585, 1:5,000) and HRP-conjugated goat anti-rabbit secondary antibody 1:20,000 respectively. Image was developed using FeQ™ ECL Substrate Kit .



Western blotting analysis using anti-MAPK activated protein kinase 2 antibody (KD-10585). MAPK activated protein kinase 2 expression in wild type (WT) and MAPK activated protein kinase 2 shRNA knockdown (KD) HeLa cells with 30 μ g of total cell lysates. Hsp90 α serves as a loading control. The blot was incubated with anti-MAPK activated protein kinase 2 antibody (KD-10585, 1:5,000) and HRP-conjugated goat anti-rabbit secondary antibody 1:20,000 respectively. Image was developed using FeQ™ ECL Substrate Kit .