



SunLong Biotech Co.,LTD
Tel: 0086-571- 56623320 Fax:0086-571- 56623318
E-mail:sales@sunlongbiotech.com
www.sunlongbiotech.com

[KD-Validated] Anti-ERK1 Rabbit Monoclonal Antibody

Cat No.: KD-10583

Aliases:

MAPK3; Mitogen-Activated Protein Kinase 3; ERK1; PRKM3; Extracellular Signal-Regulated Kinase 1; Microtubule-Associated Protein 2 Kinase; Insulin-Stimulated MAP2 Kinase; EC 2.7.11.24; P44-ERK1; P44-MAPK; P44ERK1; P44MAPK; ERK-1; ERT2; Extracellular Signal-Related Kinase 1; MAP Kinase Isoform P44; MAP Kinase 3; EC 2.7.11; HS44KDAP; HUMKER1A; P44mapk; P44erk1; MAPK 1; MAPK

Background:

UniProt Entry: [P27361](#);NCBI Gene Entry: [5595](#)

Application Information

Molecular Weight: Predicted, 43 kDa, observed, 40 kDa Clonality: Rabbit monoclonal antibody Clone ID: 23GB2450 Species Reactivity: Human Applications Used: Western Blotting (WB), Flow Cytometry (FCM), Immunocytochemistry (IC)

Immunogen

A synthesized peptide derived from human ERK1

Isotype

Rabbit IgG

Storage Buffer

Supplied in PBS (pH 7.4) containing 50% glycerol, and 0.02% sodium azide.

Storage

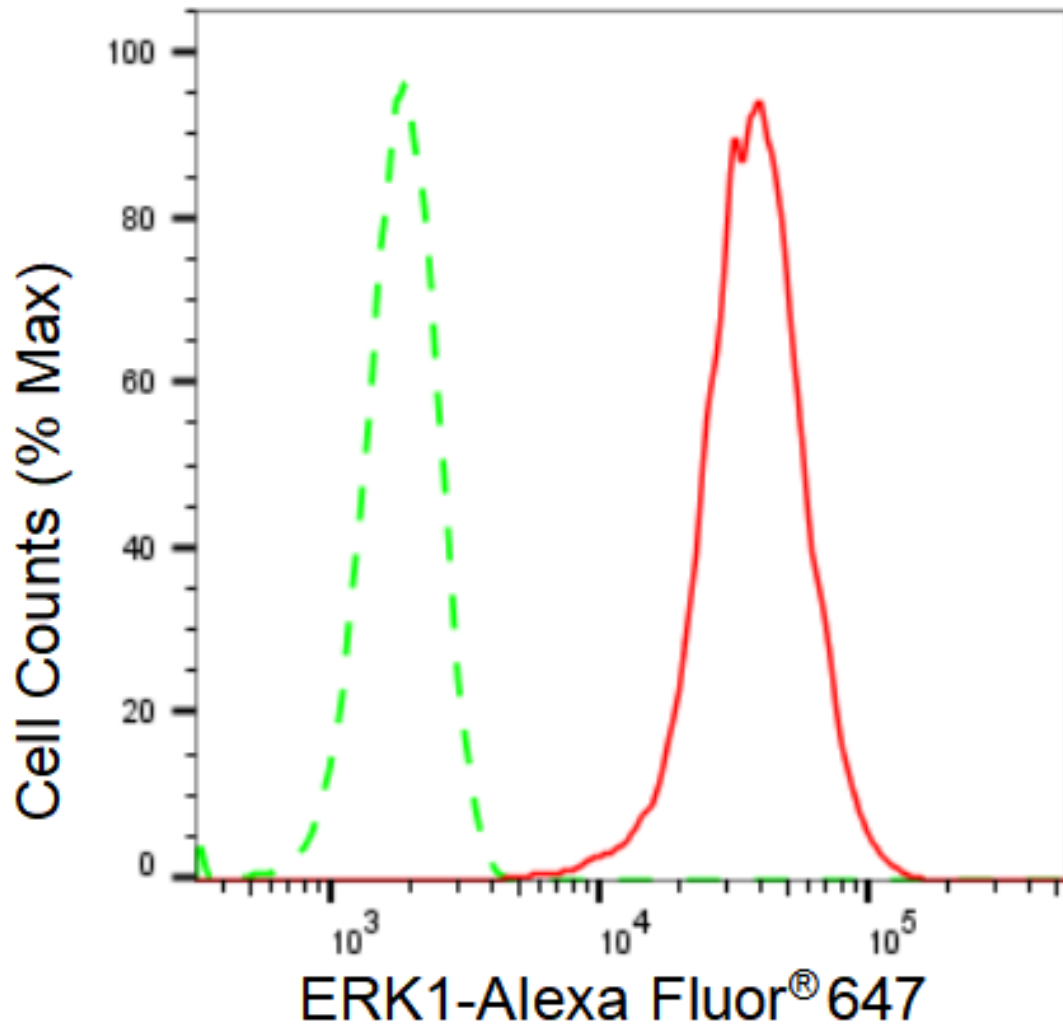
Store at -20 °C for one year.

Recommended Dilutions

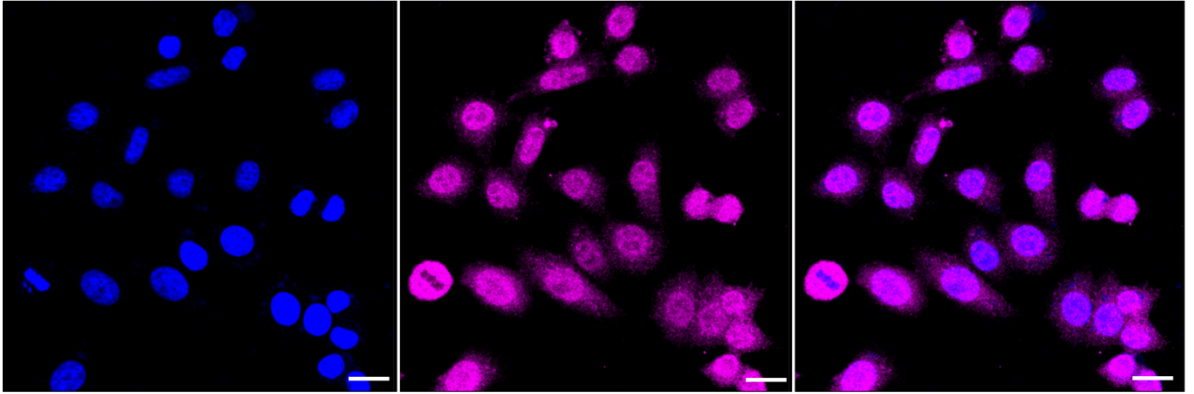
Western Blotting (WB): 1:1,000-1:5,000 Flow Cytometry (FCM): 1:2,000
Immunocytochemistry (IC): 1:1,000

Protocols

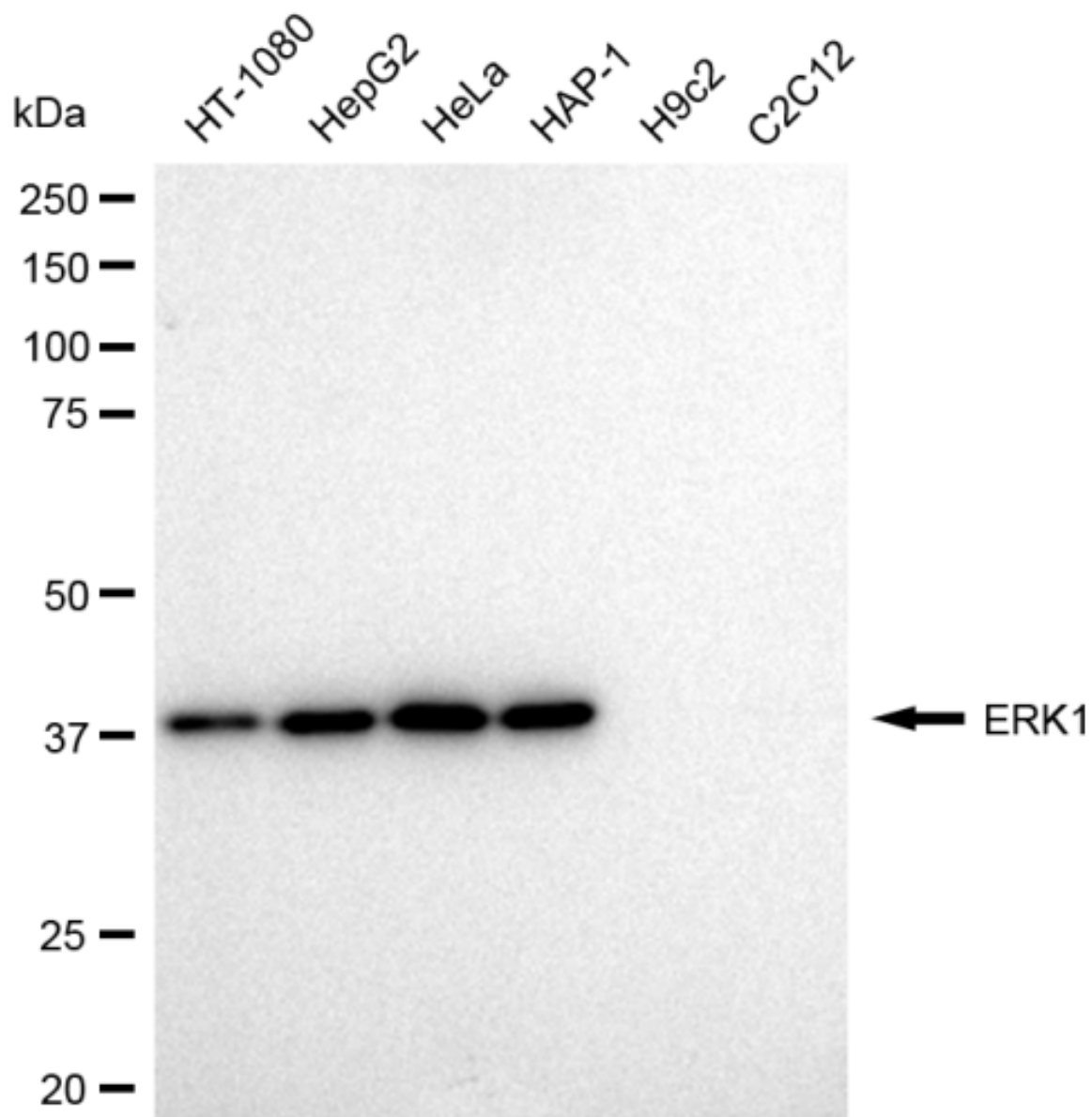
For general and specific antibody protocols please visit our website. Read all instructions before using this product.



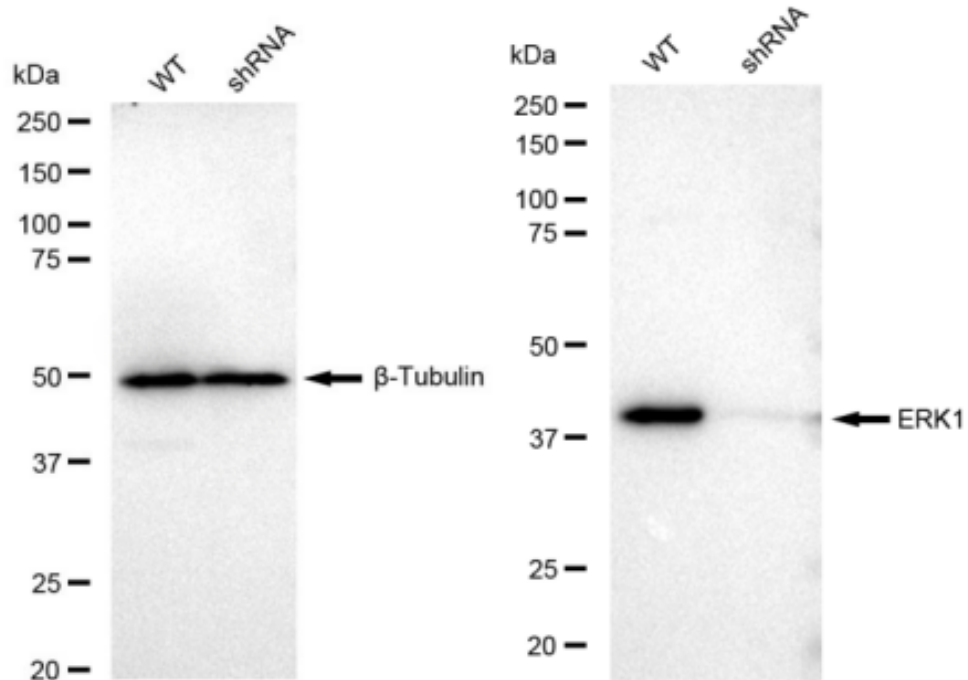
Flow cytometric analysis of ERK1 expression in HepG2 cells using ERK1 antibody 1:2,000. Green, isotype control; red, ERK1.



Immunocytochemical staining of HepG2 cells with ERK1 antibody 1:1,000. Nuclei were stained blue with DAPI; ERK1 was stained magenta with Alexa Fluor® 647. Images were taken using Leica stellaris 5. Protein abundance based on laser Intensity and smart gain: Medium. Scale bar: 20 μ m.



Western blotting analysis using anti-ERK1 antibody 1:5,000 and HRP-conjugated goat anti-rabbit secondary antibody 1:20,000 respectively. Image was developed using FeQ™ ECL Substrate Kit .



Western blotting analysis using anti-ERK1 antibody 1:5,000 and HRP-conjugated goat anti-rabbit secondary antibody 1:20,000 respectively. Image was developed using FeQ™ ECL Substrate Kit .