



SunLong Biotech Co.,LTD
Tel: 0086-571- 56623320 Fax:0086-571- 56623318
E-mail:sales@sunlongbiotech.com
www.sunlongbiotech.com

[KD-Validated] Anti-ERK1 Rabbit Monoclonal Antibody

Cat No.: KD-10582

Aliases:

MAPK3; Mitogen-Activated Protein Kinase 3; ERK1; PRKM3; Extracellular Signal-Regulated Kinase 1; Microtubule-Associated Protein 2 Kinase; Insulin-Stimulated MAP2 Kinase; EC 2.7.11.24; P44-ERK1; P44-MAPK; P44ERK1; P44MAPK; ERK-1; ERT2; Extracellular Signal-Related Kinase 1; MAP Kinase Isoform P44; MAP Kinase 3; EC 2.7.11; HS44KDAP; HUMKER1A; P44mapk; P44erk1; MAPK 1; MAPK

Background:

UniProt Entry: [P27361](#);NCBI Gene Entry: [5595](#)

Application Information

Molecular Weight: Predicted, 43 kDa, observed, 40 kDa Clonality: Rabbit monoclonal antibody Clone ID: 23GB2455 Species Reactivity: Human, Mouse, Rat Applications Tested: Western Blotting (WB), Flow Cytometry (FCM)

Immunogen

A synthesized peptide derived from human ERK1

Isotype

Rabbit IgG

Storage Buffer

Supplied in PBS (pH 7.4) containing 50% glycerol, and 0.02% sodium azide.

Storage

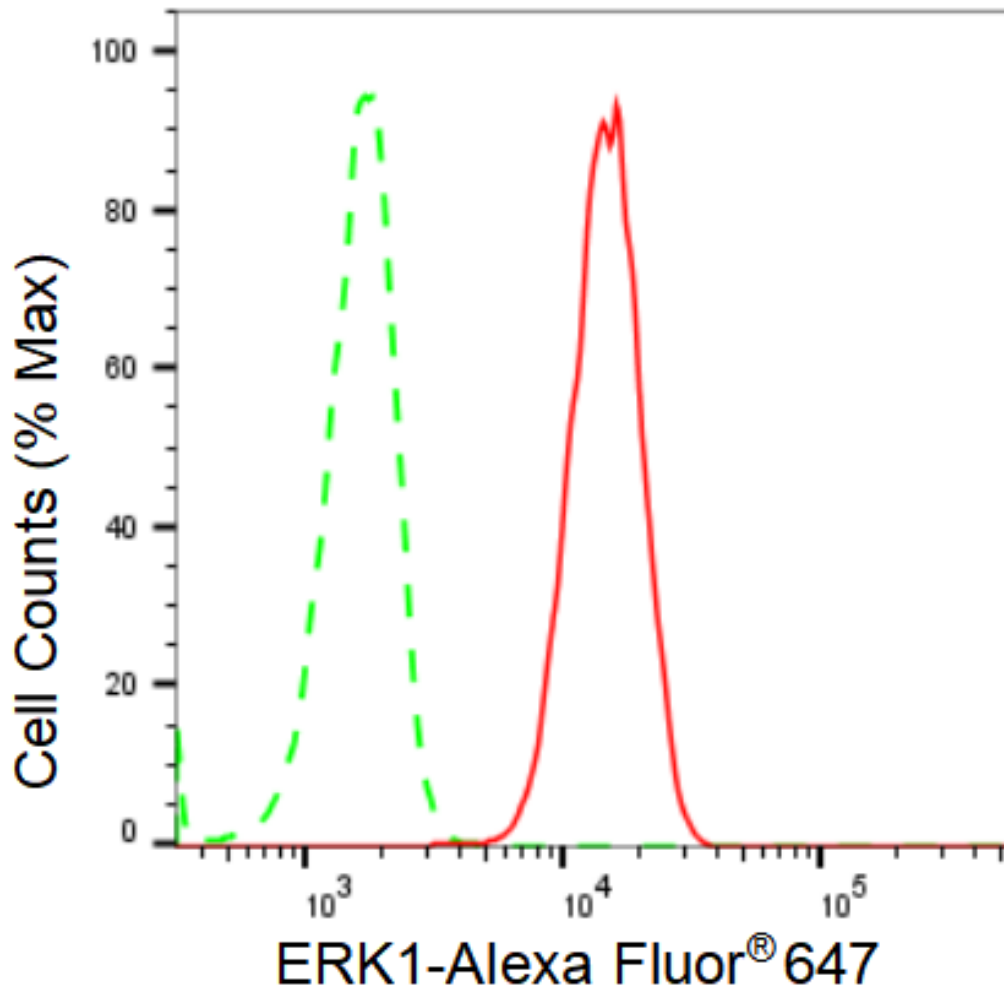
Store at -20 °C for one year.

Recommended Dilutions

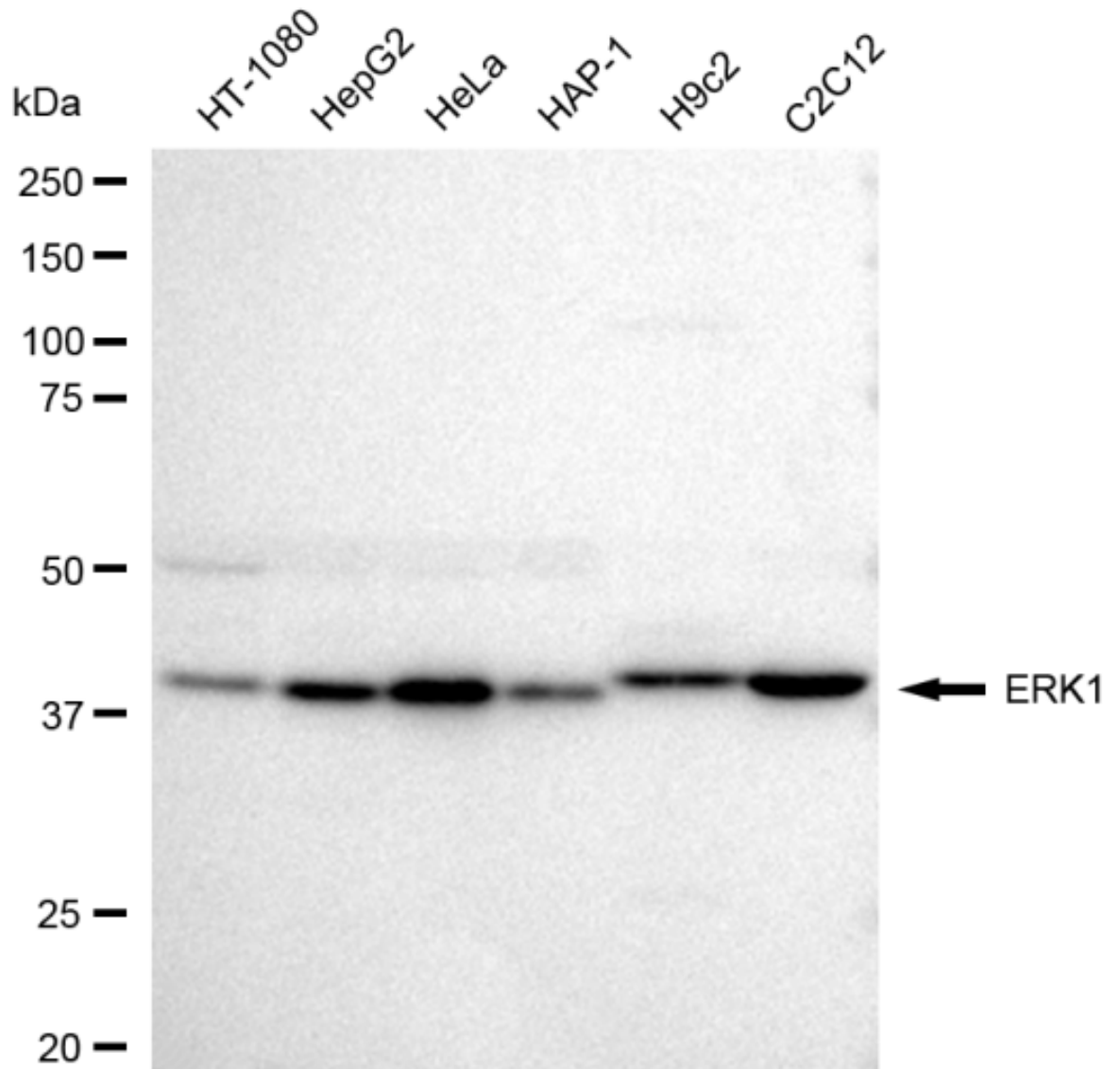
Western Blotting (WB): 1:1,000-1:5,000 Flow Cytometry (FCM): 1:2,000

Protocols

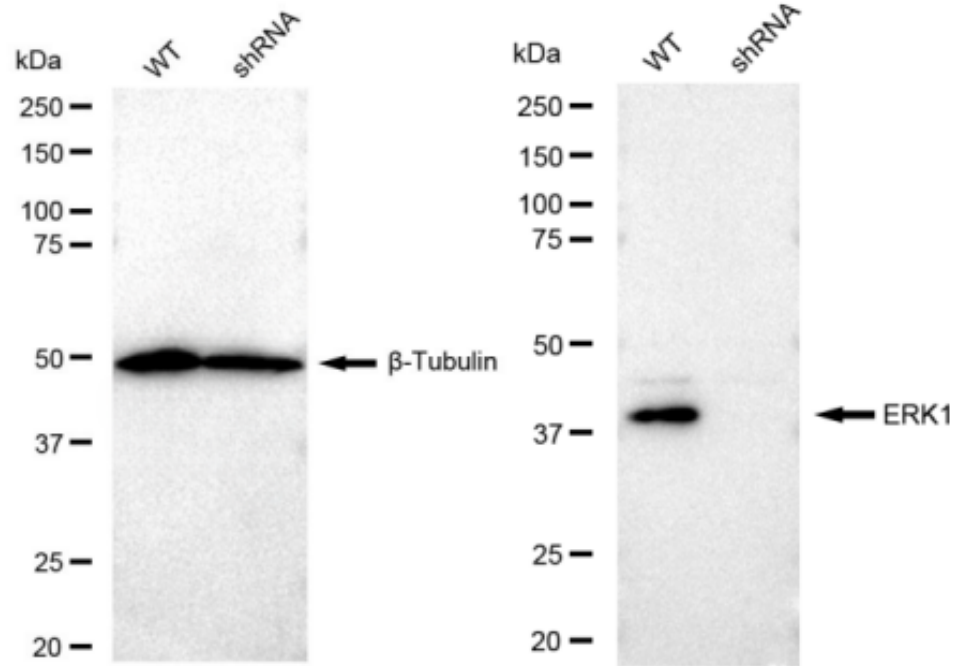
For general and specific antibody protocols please visit our website. Read all instructions before using this product.



Flow cytometric analysis of ERK1 expression in C2C12 cells using ERK1 antibody 1:2,000. Green, isotype control; red, ERK1.



Western blotting analysis using anti-ERK1 antibody 1:5,000 and HRP-conjugated goat anti-rabbit secondary antibody 1:20,000 respectively. Image was developed using FeQ™ ECL Substrate Kit .



Western blotting analysis using anti-ERK1 antibody 1:5,000 and HRP-conjugated goat anti-rabbit secondary antibody 1:20,000 respectively. Image was developed using FeQ™ ECL Substrate Kit .