



SunLong Biotech Co.,LTD  
Tel: 0086-571- 56623320 Fax:0086-571- 56623318  
E-mail:sales@sunlongbiotech.com  
www.sunlongbiotech.com

## **[KD-Validated] Anti-p38 MAPK Rabbit Monoclonal Antibody**

Cat No.: KD-10579

### **Aliases:**

MAPK14; Mitogen-Activated Protein Kinase 14; PRKM14; PRKM15; CSBP1; CSBP2; CSPB1; P38; Mitogen-Activated Protein Kinase P38 Alpha; MAX-Interacting Protein; CSAID-Binding Protein; MAP Kinase P38 Alpha; P38 MAP Kinase; MAP Kinase 14; EC 2.7.11.24; SAPK2A; Mxi2; CSBP; MXI2; Cytokine Suppressive Anti-Inflammatory Drug Binding Protein; Cytokine Suppressive Anti-Inflammatory Drug-Binding Protein; P38 Mitogen Activated Protein Kinase; Stress-Activated Protein Kinase 2A; Stress-Activated Protein Kinase 2a; MAP Kinase Mxi2; MAP Kinase MXI2; P38alpha Exip; EC 2.7.11; P38ALPHA; MAPK 14; SAPK2a; EXIP; RK

### **Background:**

UniProt Entry: [Q16539](#);NCBI Gene Entry: [1432](#)

### **Application Information**

Molecular Weight: Predicted, 41 kDa, observed, 38 kDa Clonality: Rabbit monoclonal antibody Clone ID: 23GB4535 Species Reactivity: Human, Mouse, Rat Applications Tested: Western Blotting (WB), Flow Cytometry (FCM), Immunocytochemistry (IC)

### **Immunogen**

A synthesized peptide derived from human p38 MAPK

### **Isotype**

Rabbit IgG

### Storage Buffer

Supplied in PBS (pH 7.4) containing 50% glycerol, and 0.02% sodium azide.

### Storage

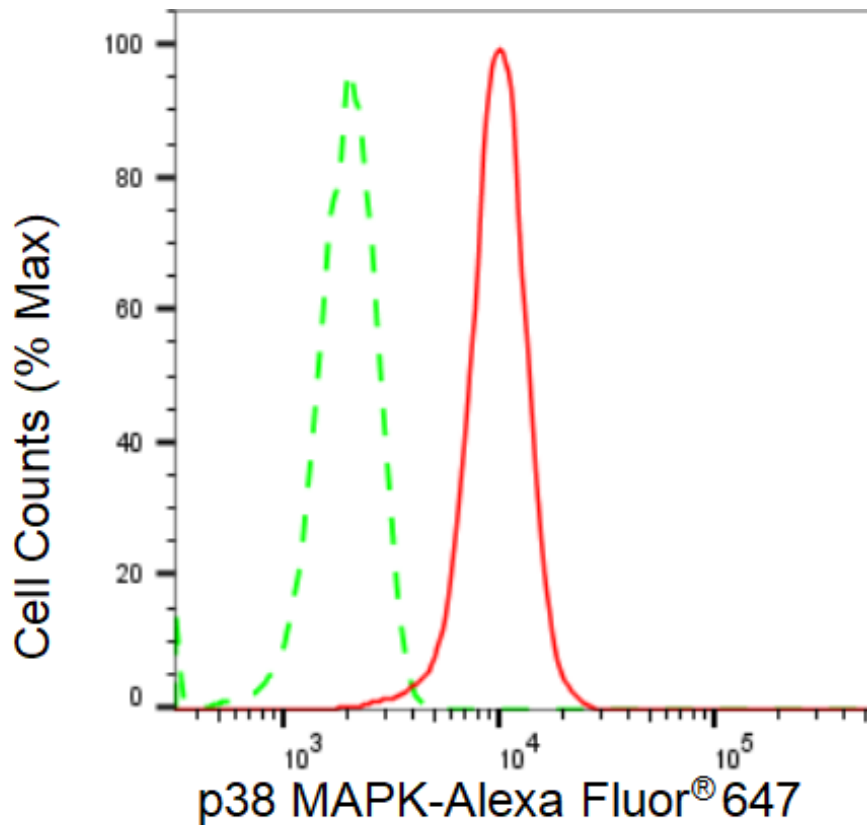
Store at -20 °C for one year.

### Recommended Dilutions

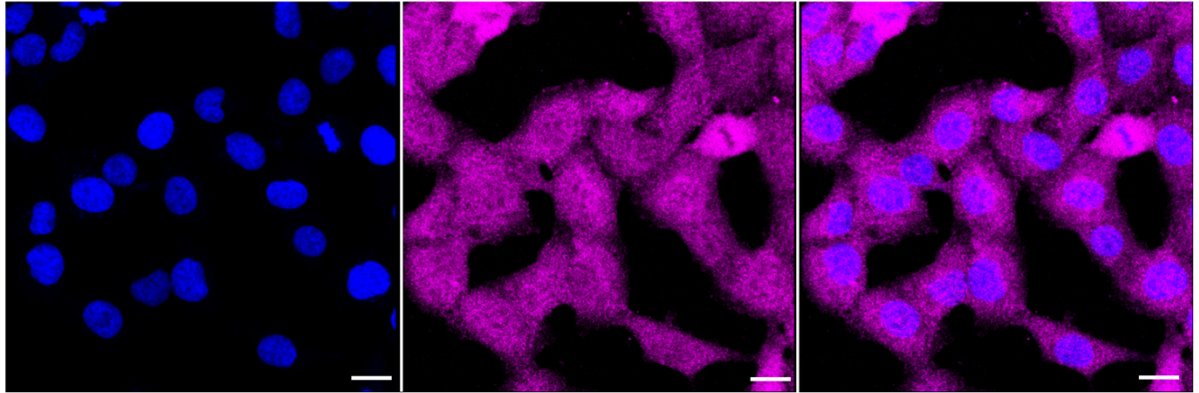
Western Blotting (WB): 1:1,000-1:5,000 Flow Cytometry (FCM): 1:2,000  
Immunocytochemistry (IC): 1:1,000

### Protocols

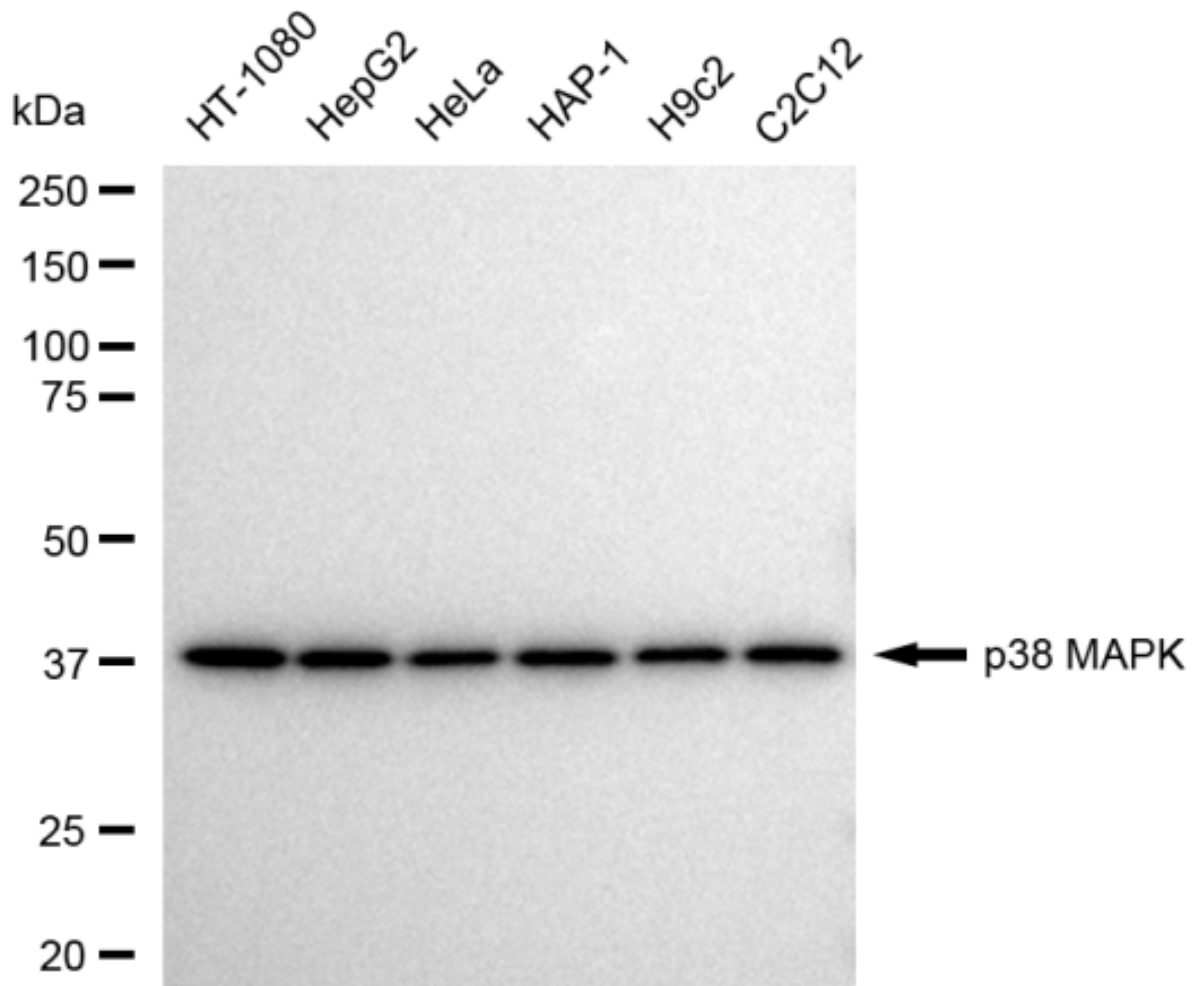
For general and specific antibody protocols please visit our website. Read all instructions before using this product.



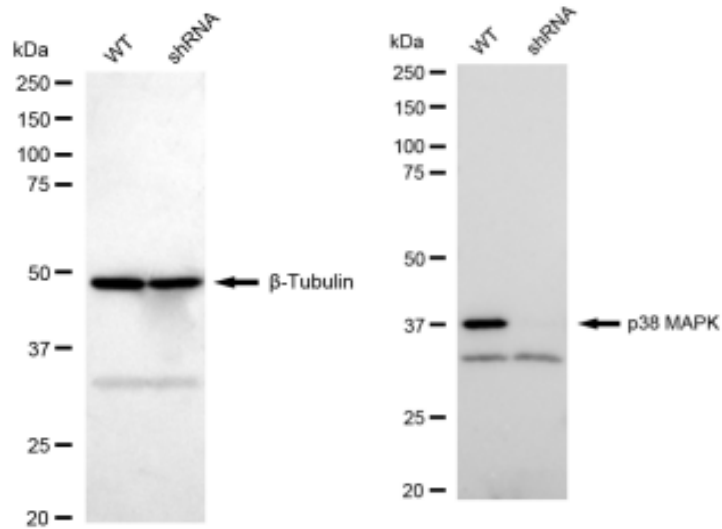
Flow cytometric analysis of p38 MAPK expression in HT-1080 cells using p38 MAPK antibody 1:2,000. Green, isotype control; red, p38 MAPK.



Immunocytochemical staining of HT-1080 cells with p38 MAPK antibody 1:1,000. Nuclei were stained blue with DAPI; p38 MAPK was stained magenta with Alexa Fluor® 647. Images were taken using Leica stellaris 5. Protein abundance based on laser Intensity and smart gain: Medium. Scale bar: 20  $\mu$ m.



Western blotting analysis using anti-p38 MAPK antibody 1:5,000 and HRP-conjugated goat anti-rabbit secondary antibody 1:20,000 respectively. Image was developed using FeQ™ ECL Substrate Kit .



Western blotting analysis using anti-p38 MAPK antibody 1:5,000 and HRP-conjugated goat anti-rabbit secondary antibody 1:20,000 respectively. Image was developed using FeQ™ ECL Substrate Kit .