



SunLong Biotech Co.,LTD  
Tel: 0086-571- 56623320 Fax:0086-571- 56623318  
E-mail:sales@sunlongbiotech.com  
www.sunlongbiotech.com

## **[KD-Validated] Anti-p38 MAPK Rabbit Monoclonal Antibody**

Cat No.: KD-10578

### **Aliases:**

MAPK14; Mitogen-Activated Protein Kinase 14; PRKM14; PRKM15; CSBP1; CSBP2; CSPB1; P38; Mitogen-Activated Protein Kinase P38 Alpha; MAX-Interacting Protein; CSAID-Binding Protein; MAP Kinase P38 Alpha; P38 MAP Kinase; MAP Kinase 14; EC 2.7.11.24; SAPK2A; Mxi2; CSBP; MXI2; Cytokine Suppressive Anti-Inflammatory Drug Binding Protein; Cytokine Suppressive Anti-Inflammatory Drug-Binding Protein; P38 Mitogen Activated Protein Kinase; Stress-Activated Protein Kinase 2A; Stress-Activated Protein Kinase 2a; MAP Kinase Mxi2; MAP Kinase MXI2; P38alpha Exip; EC 2.7.11; P38ALPHA; MAPK 14; SAPK2a; EXIP; RK

### **Background:**

UniProt Entry: [Q16539](#);NCBI Gene Entry: [1432](#)

### **Application Information**

Molecular Weight: Predicted, 41 kDa, observed, 38 kDa Clonality: Rabbit monoclonal antibody Clone ID: 23GB4530 Species Reactivity: Human, Mouse, Rat Applications Tested: Western Blotting (WB), Flow Cytometry (FCM), Immunocytochemistry (IC)

### **Immunogen**

A synthesized peptide derived from human p38 MAPK

### **Isotype**

Rabbit IgG

### Storage Buffer

Supplied in PBS (pH 7.4) containing 50% glycerol, and 0.02% sodium azide.

### Storage

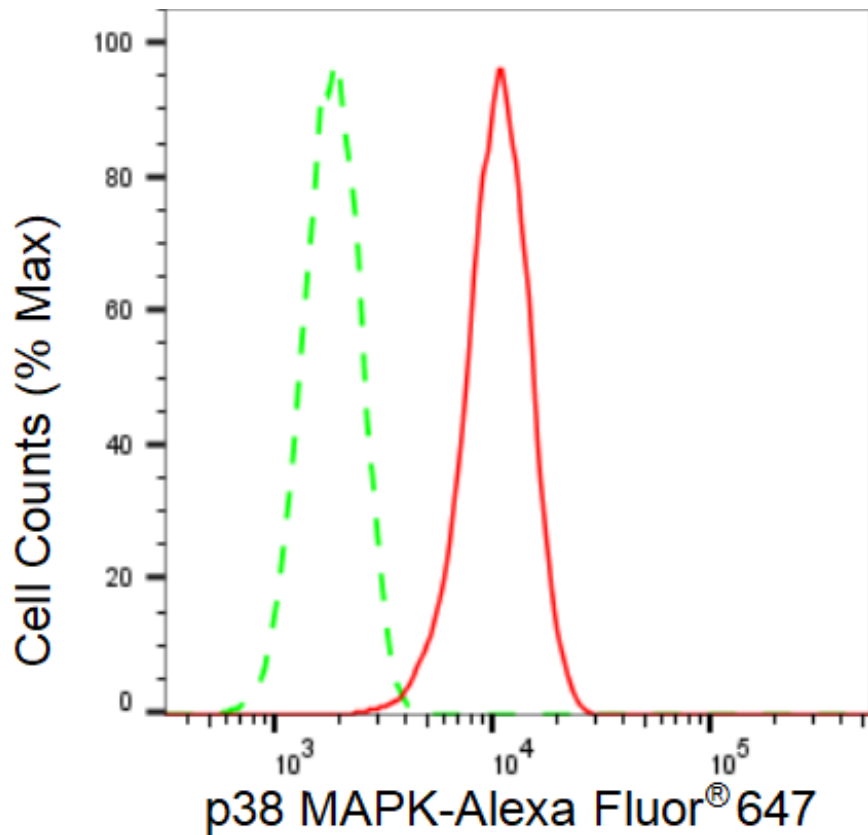
Store at -20 °C for one year.

### Recommended Dilutions

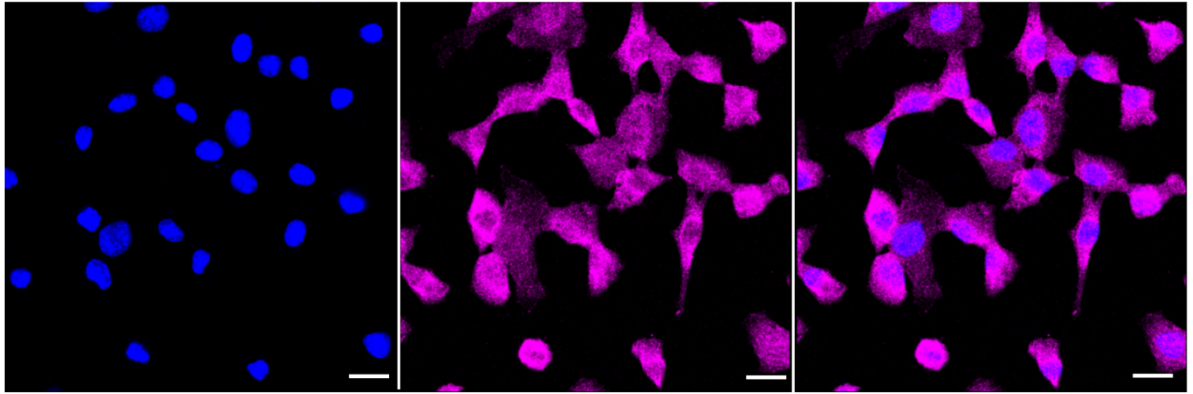
Western Blotting (WB): 1:1,000-1:5,000 Flow Cytometry (FCM): 1:2,000  
Immunocytochemistry (IC): 1:1,000

### Protocols

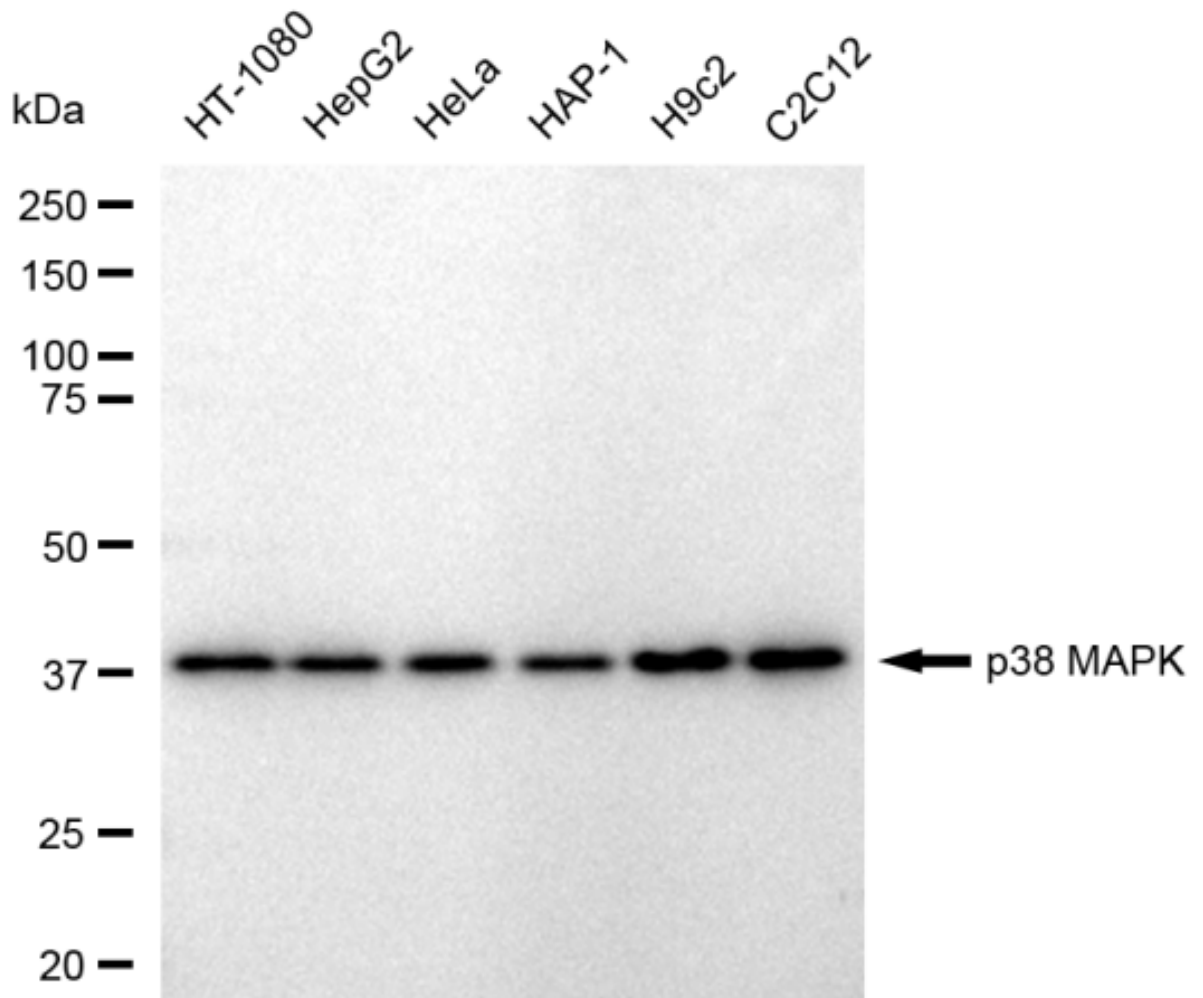
For general and specific antibody protocols please visit our website. Read all instructions before using this product.



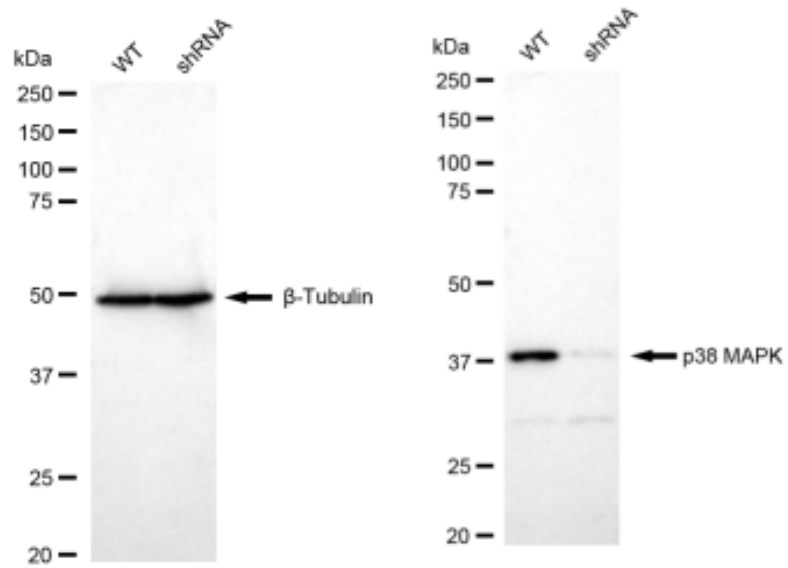
Flow cytometric analysis of p38 MAPK expression in C2C12 cells using p38 MAPK antibody 1:2,000. Green, isotype control; red, p38 MAPK.



Immunocytochemical staining of C2C12 cells with p38 MAPK antibody 1:1,000. Nuclei were stained blue with DAPI; p38 MAPK was stained magenta with Alexa Fluor® 647. Images were taken using Leica stellaris 5. Protein abundance based on laser Intensity and smart gain: Medium. Scale bar: 20  $\mu$ m.



Western blotting analysis using anti-p38 MAPK antibody 1:5,000 and HRP-conjugated goat anti-rabbit secondary antibody 1:20,000 respectively. Image was developed using FeQ™ ECL Substrate Kit .



Western blotting analysis using anti-p38 MAPK antibody 1:5,000 and HRP-conjugated goat anti-rabbit secondary antibody 1:20,000 respectively. Image was developed using FeQ™ ECL Substrate Kit .