



SunLong Biotech Co.,LTD
Tel: 0086-571- 56623320 Fax:0086-571- 56623318
E-mail:sales@sunlongbiotech.com
www.sunlongbiotech.com

[KD-Validated] Anti-ERK1/2 Rabbit Monoclonal Antibody

Cat No.: KD-10576

Aliases:

MAPK3; Mitogen-Activated Protein Kinase 3; ERK1; PRKM3; Extracellular Signal-Regulated Kinase 1; Microtubule-Associated Protein 2 Kinase; Insulin-Stimulated MAP2 Kinase; EC 2.7.11.24; P44-ERK1; P44-MAPK; P44ERK1; P44MAPK; ERK-1; ERT2; Extracellular Signal-Related Kinase 1; MAP Kinase Isoform P44; MAP Kinase; EC 2.7.11; HS44KDAP; HUMKER1A; P44mapk; P44erk1; MAPK 1; MAPK 3; MAPK1; Mitogen-Activated Protein Kinase 1; ERK2; Extracellular Signal-Regulated Kinase 2; MAPK2; PRKM1; PRKM2; ERK; Mitogen-Activated Protein Kinase 2; MAP Kinase 1; MAP Kinase 2; EC 2.7.11.24; P42-MAPK; P41mapk; MAPK; ERK-2; ERT1; Protein Tyrosine Kinase; ERK2; MAP Kinase Isoform P42; EC 2.7.11; P42MAPK; P41MAPK; MAPK 1; NS13; P38; P40; P41

Background:

UniProt Entry: [P27361/ P28482](#);NCBI Gene Entry: [5595/5594](#)

Application Information

Molecular Weight: Predicted, 43,41 kDa, observed, 42,44 kDa Clonality: Rabbit monoclonal antibody Clone ID: 23GB4510 Species Reactivity: Human, Mouse, Rat Applications Tested: Western Blotting (WB), Flow Cytometry (FCM), Immunocytochemistry (IC)

Immunogen

A synthesized peptide derived from human ERK1/2

Isotype

Rabbit IgG

Storage Buffer

Supplied in PBS (pH 7.4) containing 50% glycerol, and 0.02% sodium azide.

Storage

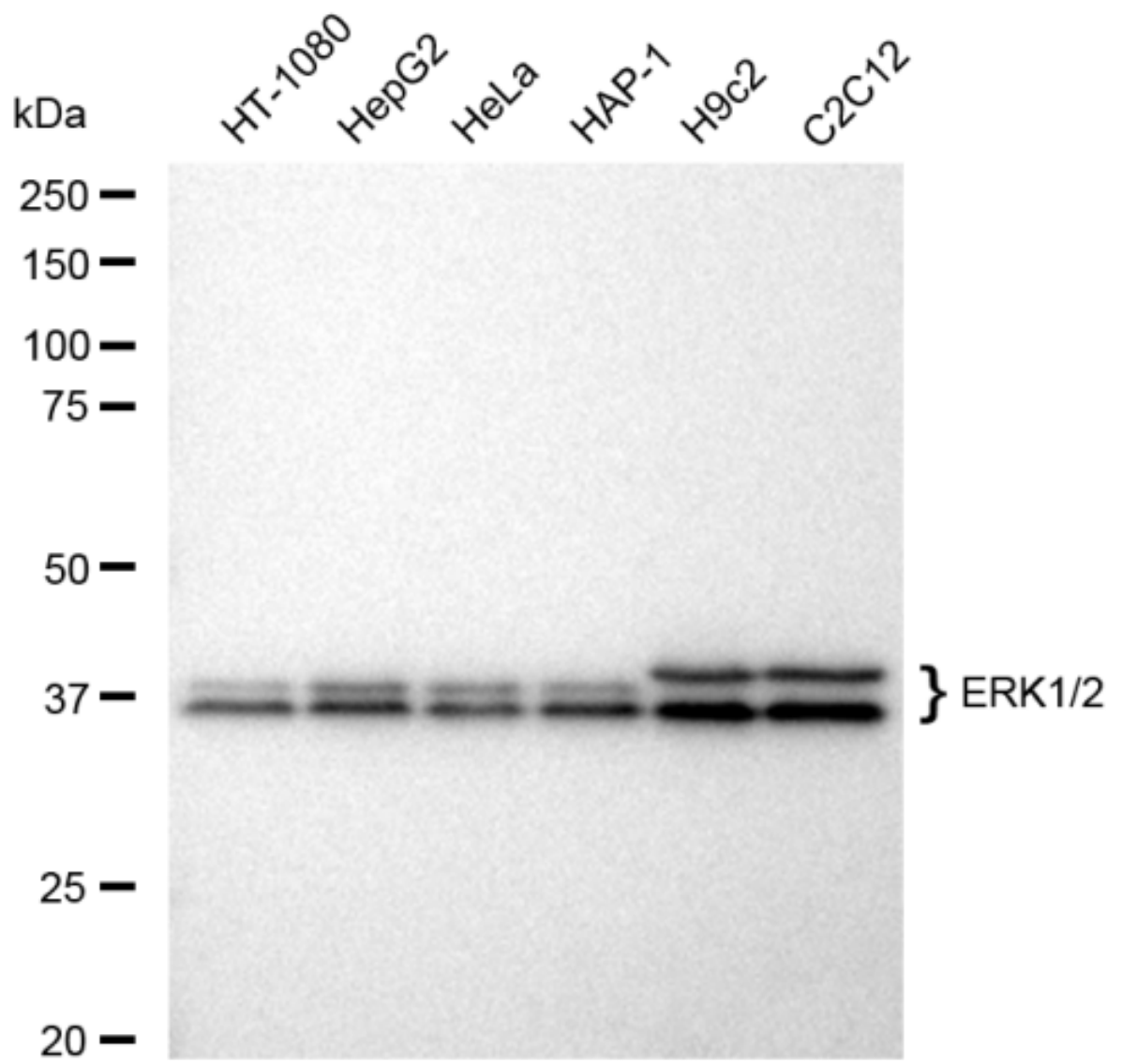
Store at -20 °C for one year.

Recommended Dilutions

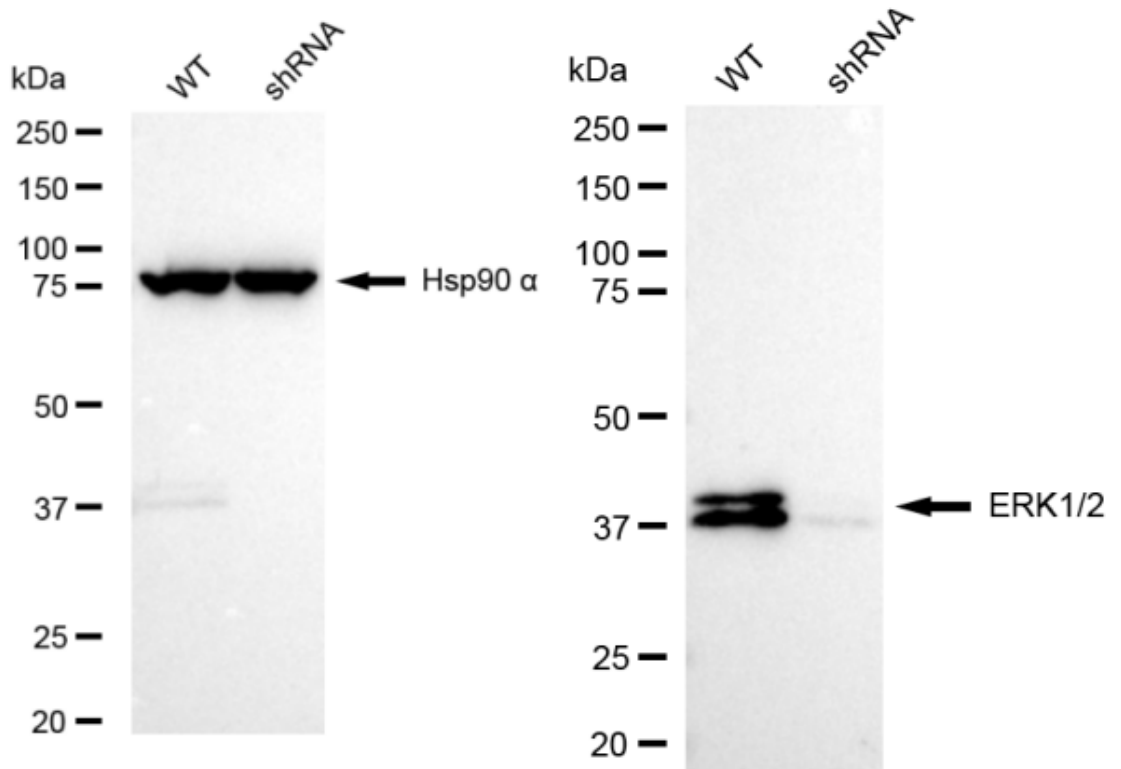
Western Blotting (WB): 1:1,000-1:5,000 Flow cytometry (FCM): 1:2,000
Immunocytochemistry (IC): 1:1,000

Protocols

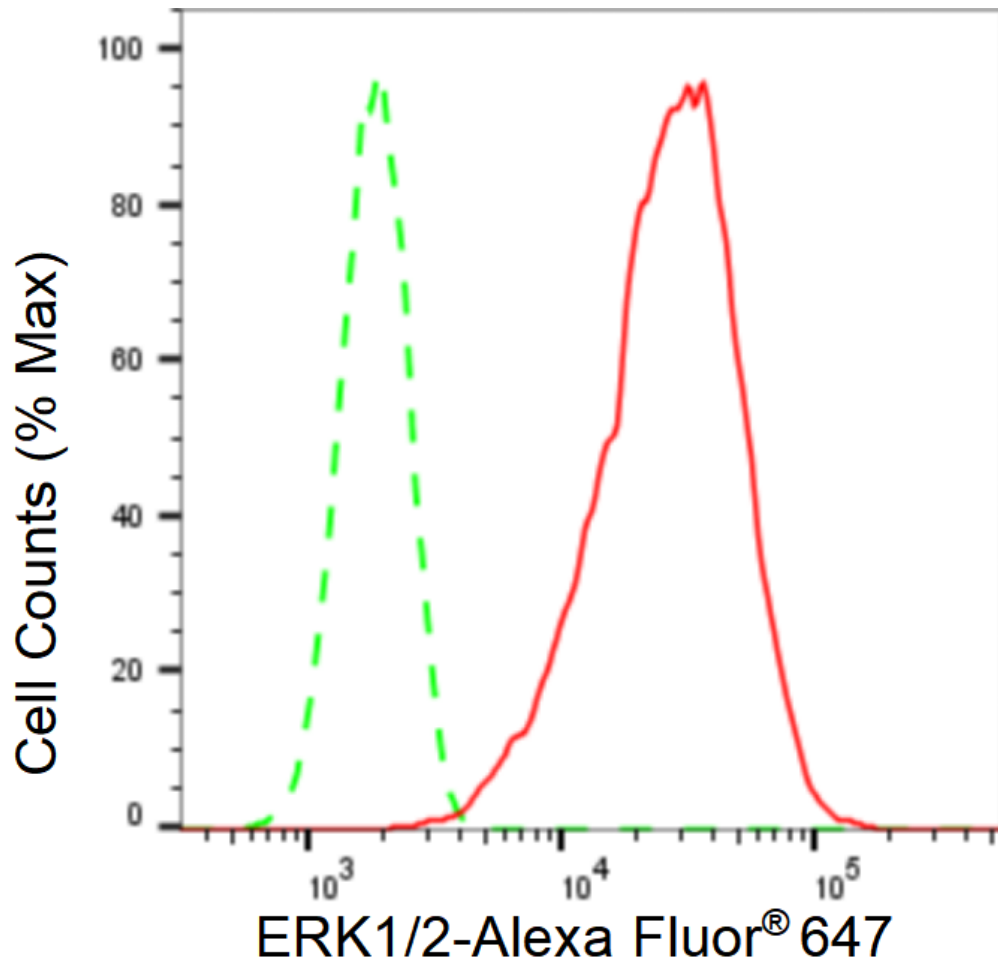
For general and specific antibody protocols please visit our website. Read all instructions before using this product.



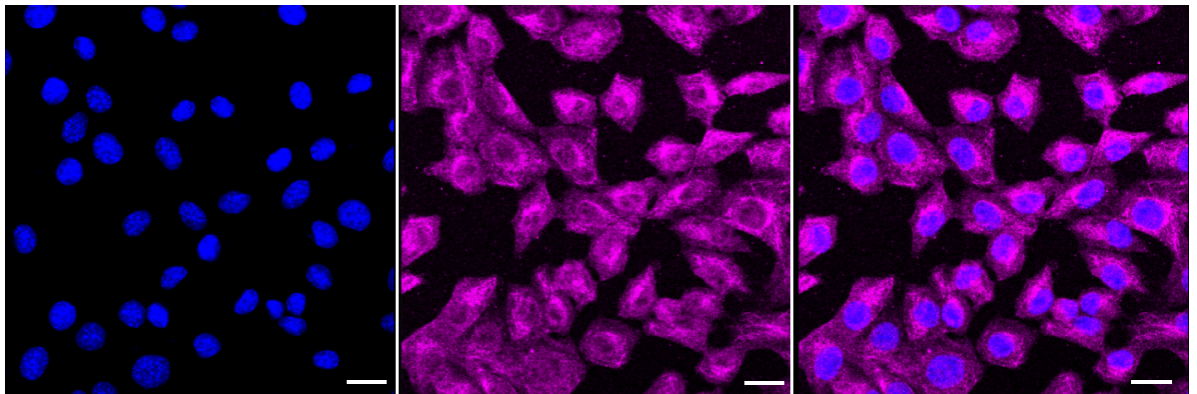
Western blotting analysis using anti-ERK1/2 antibody 1:5,000 and HRP-conjugated goat anti-rabbit secondary antibody 1:20,000 respectively. Image was developed using FeQ™ ECL Substrate Kit .



Western blotting analysis using anti-ERK1/2 antibody 1:5,000 and HRP-conjugated goat anti-rabbit secondary antibody 1:20,000 respectively. Image was developed using FeQTM ECL Substrate Kit .



Flow cytometric analysis of ERK1/2 expression in C2C12 cells using ERK1/2 antibody 1:2,000. Green, isotype control; red, ERK1/2.



Immunocytochemical staining of C2C12 cells with ERK1/2 antibody 1:1,000. Nuclei were stained blue with DAPI; ERK1/2 was stained magenta with Alexa Fluor® 647. Images were taken using Leica stellaris 5. Protein abundance based on laser Intensity and smart gain: Medium. Scale bar: 20 μ m.