



SunLong Biotech Co.,LTD
Tel: 0086-571- 56623320 Fax:0086-571- 56623318
E-mail:sales@sunlongbiotech.com
www.sunlongbiotech.com

[KD-Validated] Anti-Mitogen-Activated Protein Kinase 1 Rabbit Monoclonal Antibody

Cat No.: KD-10575

Aliases:

MAPK1; Mitogen-Activated Protein Kinase 1; ERK2; Extracellular Signal Regulated Kinase 2; P41mapk; MAPK; PRKM1; PRKM2; ERK; Mitogen-Activated Protein Kinase 2; MAP Kinase 1; MAP Kinase 2; EC 2.7.11.24; P42-MAPK; MAPK 2; ERK-2; ERT1; Protein Tyrosine Kinase ERK2; MAP Kinase Isoform P42; EC 2.7.11; P42MAPK; MAPK 1; NS13; P38; P40; P41

Background:

UniProt Entry: [P28482](#);NCBI Gene Entry: [5594](#)

Application Information

Molecular Weight: Predicted, 41 kDa, observed, 41 kDa Clonality: Rabbit monoclonal antibody Clone ID: 24GB3095 Species Reactivity: Human, Mouse, Rat Applications Tested: Western Blotting (WB), Flow Cytometry (FCM), Immunocytochemistry (IC)

Immunogen

A synthesized peptide derived from human ERK2

Isotype

Rabbit IgG

Storage Buffer

Supplied in PBS (pH 7.4) containing 50% glycerol, and 0.02% sodium azide.

Storage

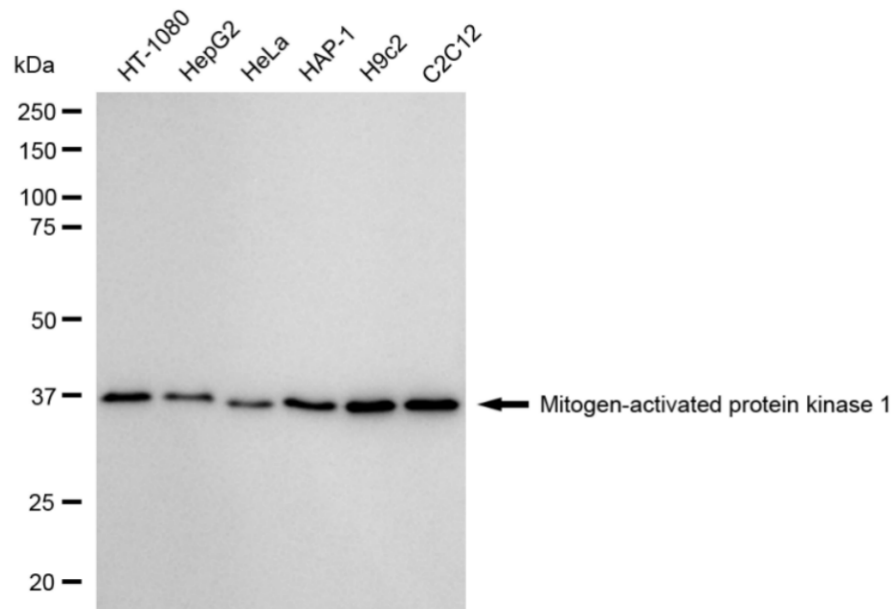
Store at -20 °C for one year.

Recommended Dilutions

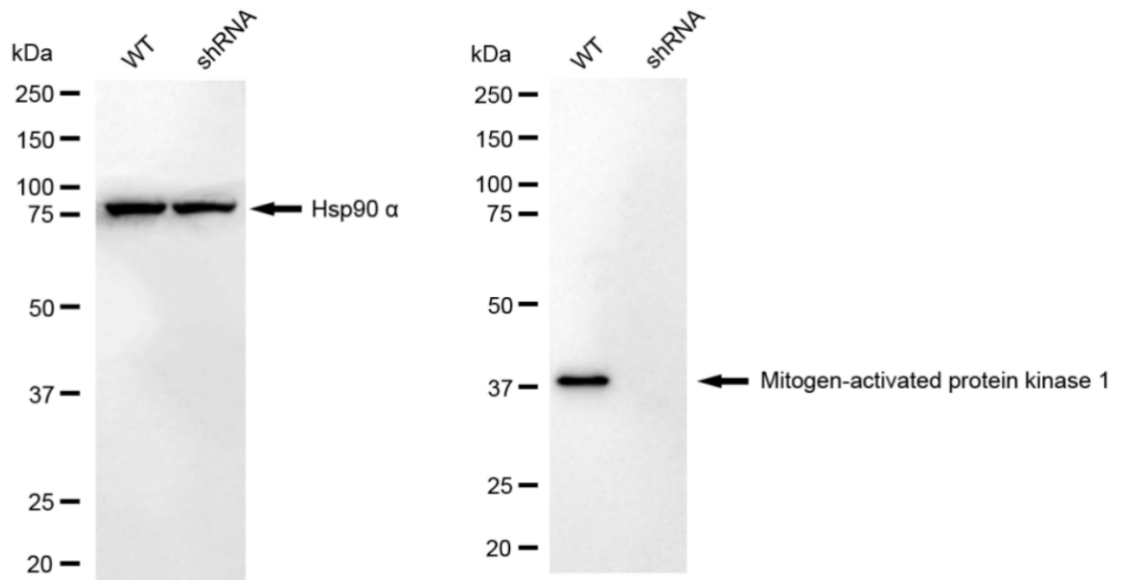
Western Blotting (WB): 1:1,000-1:5,000 Flow Cytometry (FCM): 1:2,000
Immunocytochemistry (IC): 1:1,000

Protocols

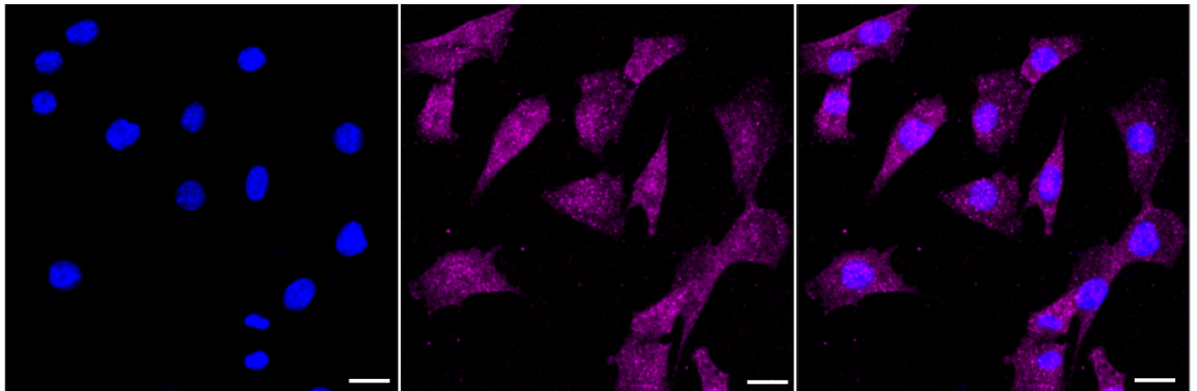
For general and specific antibody protocols please visit our website. Read all instructions before using this product.



Western blotting analysis using anti-Mitogen-activated protein kinase 1 antibody 1:5,000 and HRP-conjugated goat anti-rabbit secondary antibody 1:20,000 respectively. Image was developed using FeQTM ECL Substrate Kit .



Western blotting analysis using anti-mitogen-activated protein kinase 1 antibody 1:5,000 and HRP-conjugated goat anti-rabbit secondary antibody 1:20,000 respectively. Image was developed using NaQ™ ECL Substrate Kit 1:2,000. Green, isotype control; red, Mitogen-activated protein kinase 1.



Immunocytochemical staining of C2C12 cells with anti-Mitogen-activated protein kinase 1 antibody 1:1,000 . Nuclei were stained blue with DAPI; Mitogen-activated protein kinase 1 was stained magenta with Alexa Fluor® 647. Images were taken using leica stellaris 5. Protein abundance based on laser intensity and smart gain: Medium. Scale bar: 20 μ m.