



SunLong Biotech Co.,LTD
Tel: 0086-571- 56623320 Fax:0086-571- 56623318
E-mail:sales@sunlongbiotech.com
www.sunlongbiotech.com

[KD-Validated] Anti-MAP3K7 Rabbit Monoclonal Antibody

Cat No.: KD-10574

Aliases:

MAP3K7; Mitogen-Activated Protein Kinase Kinase Kinase 7; MEKK7; TAK1; Transforming Growth Factor-Beta-Activated Kinase 1; TGF-Beta Activated Kinase 1; EC 2.7.11.25; TGF-Beta-Activated Kinase 1; EC 2.7.11; TGF1a; CSCF; FMD2

Background:

UniProt Entry: [O43318](#);NCBI Gene Entry: [6885](#)

Application Information

Molecular Weight: Predicted, 67 kDa, observed, 75 kDa Clonality: Rabbit monoclonal antibody Clone ID: 23GB2395 Species Reactivity: Human, Mouse, Rat Applications Tested: Western Blotting (WB), Flow Cytometry (FCM), Immunocytochemistry (IC)

Immunogen

A synthesized peptide derived from human TAK1

Isotype

Rabbit IgG

Storage Buffer

Supplied in PBS (pH 7.4) containing 50% glycerol, and 0.02% sodium azide.

Storage

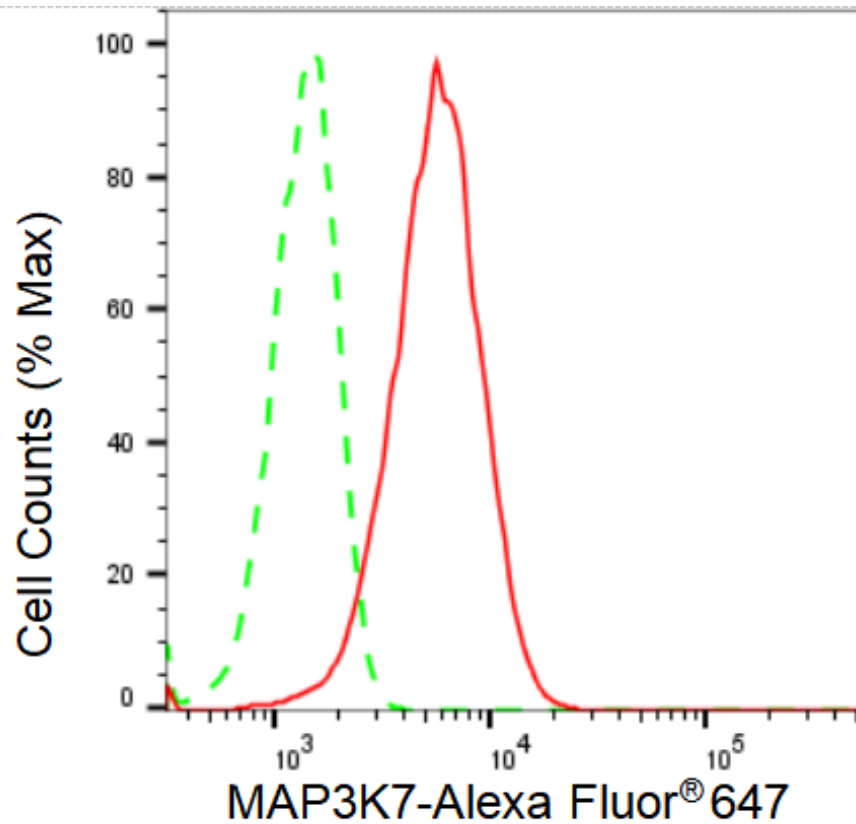
Store at -20 °C for one year.

Recommended Dilutions

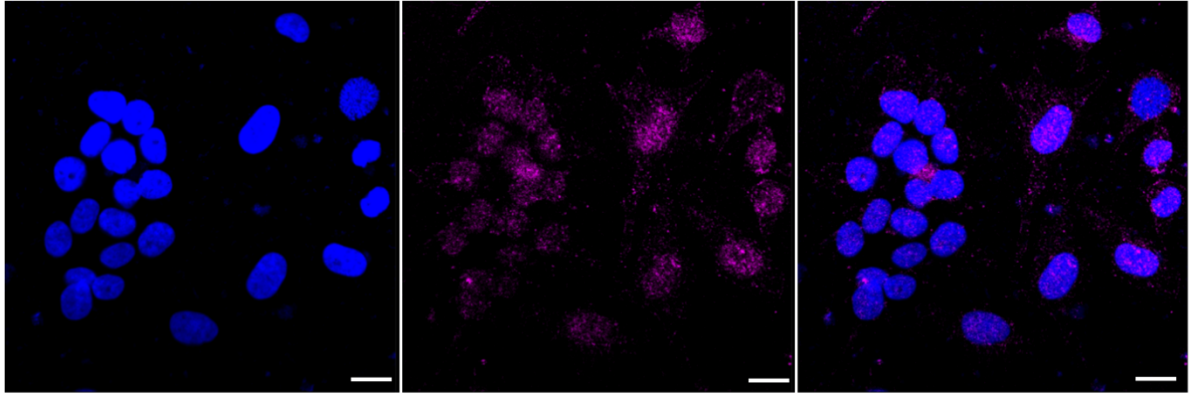
Western Blotting (WB): 1:1,000-1:5,000 Flow Cytometry (FCM): 1:2,000
Immunocytochemistry (IC): 1:1,000

Protocols

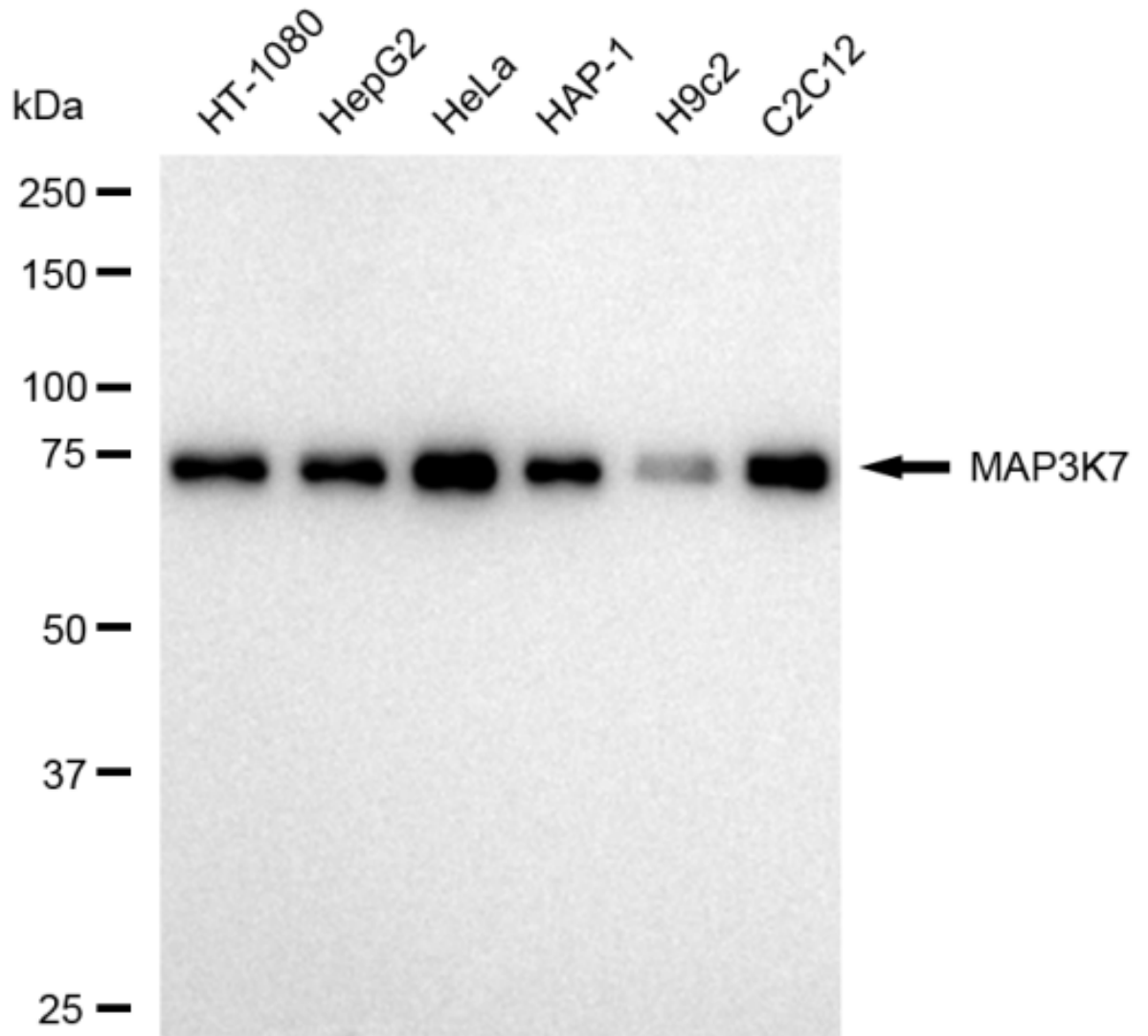
For general and specific antibody protocols please visit our website. Read all instructions before using this product.



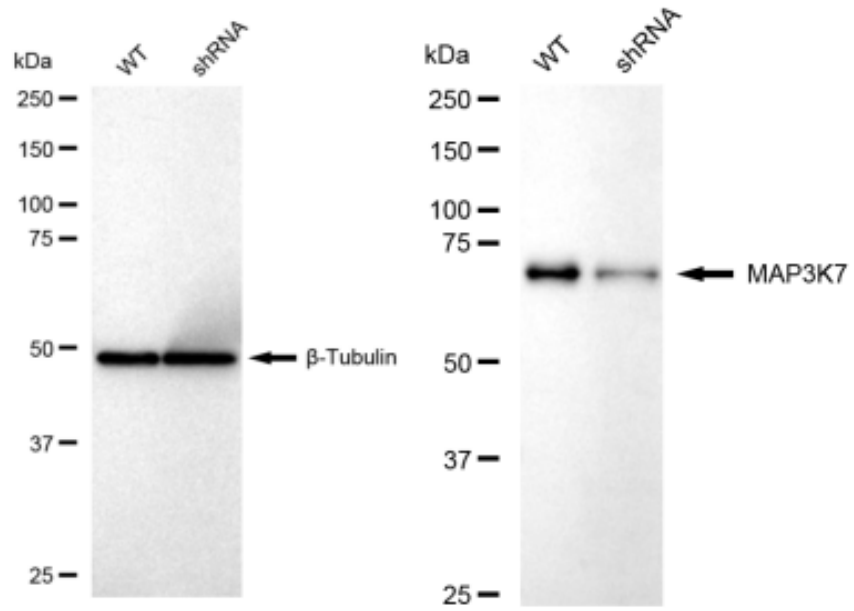
Flow cytometric analysis of MAP3K7 expression in HeLa cells using MAP3K7 antibody 1:2,000. Green, isotype control; red, MAP3K7.



Immunocytochemical staining of HeLa cells with MAP3K7 antibody 1:1,000. Nuclei were stained blue with DAPI; MAP3K7 was stained magenta with Alexa Fluor® 647. Images were taken using Leica stellaris 5. Protein abundance based on laser Intensity and smart gain: Very low. Scale bar: 20 μm .



Western blotting analysis using anti-MAP3K7 antibody 1:5,000 and HRP-conjugated goat anti-rabbit secondary antibody 1:20,000 respectively. Image was developed using FeQ™ ECL Substrate Kit .



Western blotting analysis using anti-MAP3K7 antibody 1:5,000 and HRP-conjugated goat anti-rabbit secondary antibody 1:20,000 respectively. Image was developed using FeQ™ ECL Substrate Kit .