



SunLong Biotech Co.,LTD
Tel: 0086-571- 56623320 Fax:0086-571- 56623318
E-mail:sales@sunlongbiotech.com
www.sunlongbiotech.com

[KD-Validated] Anti-MAP3K2 Rabbit Monoclonal Antibody

Cat No.: KD-10573

Aliases:

Mitogen-Activated Protein Kinase Kinase Kinase 2; MEKK2B; MEKK2; MAPK/ERK Kinase Kinase 2; MAP/ERK Kinase Kinase 2; MEK Kinase 2; MEKK 2; EC 2.7.11.25; MAPKKK2

Background:

UniProt Entry: [Q9Y2U5](#);NCBI Gene Entry: [10746](#)

Application Information

Molecular Weight: Predicted, 70 kDa, observed, 70 kDa Clonality: Rabbit monoclonal antibody Clone ID: 24GB260 Species Reactivity: Human, Mouse, Rat Applications Tested: Western Blotting (WB), Flow Cytometry (FCM), Immunocytochemistry (IC)

Immunogen

A synthesized peptide derived from human MEKK2

Isotype

Rabbit IgG

Storage Buffer

Supplied in PBS (pH 7.4) containing 50% glycerol, and 0.02% sodium azide.

Storage

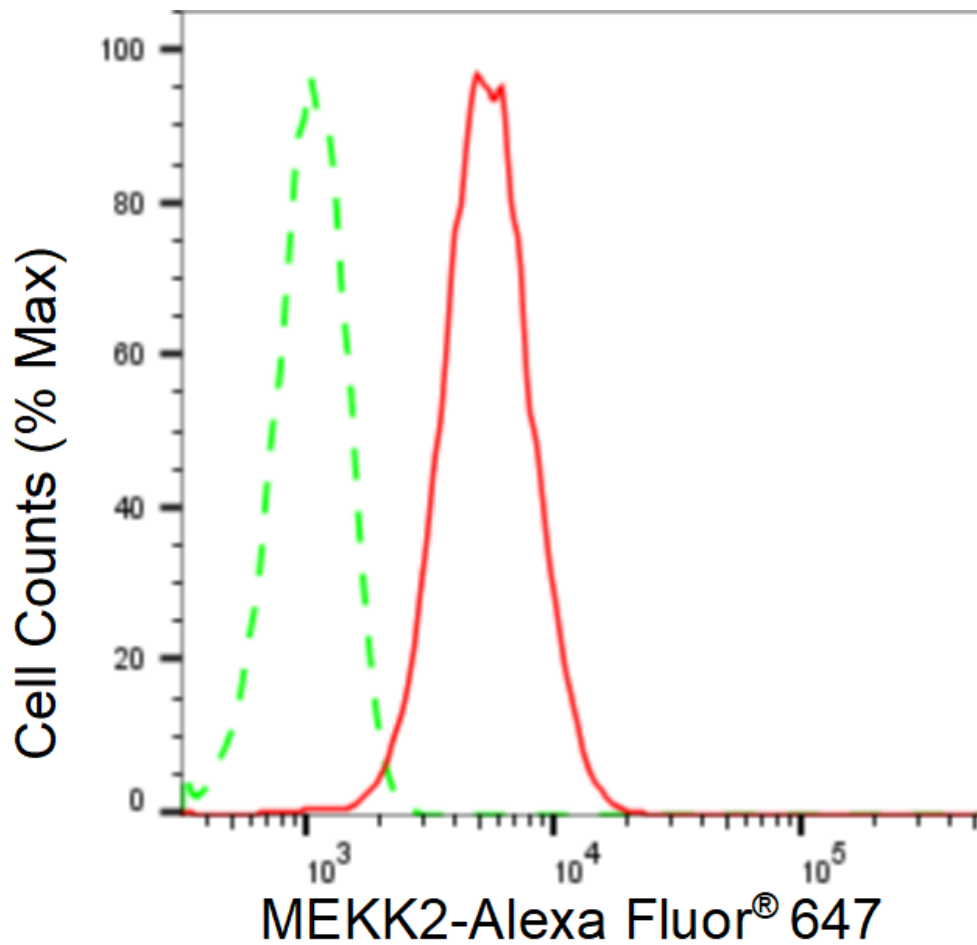
Store at -20 °C for one year.

Recommended Dilutions

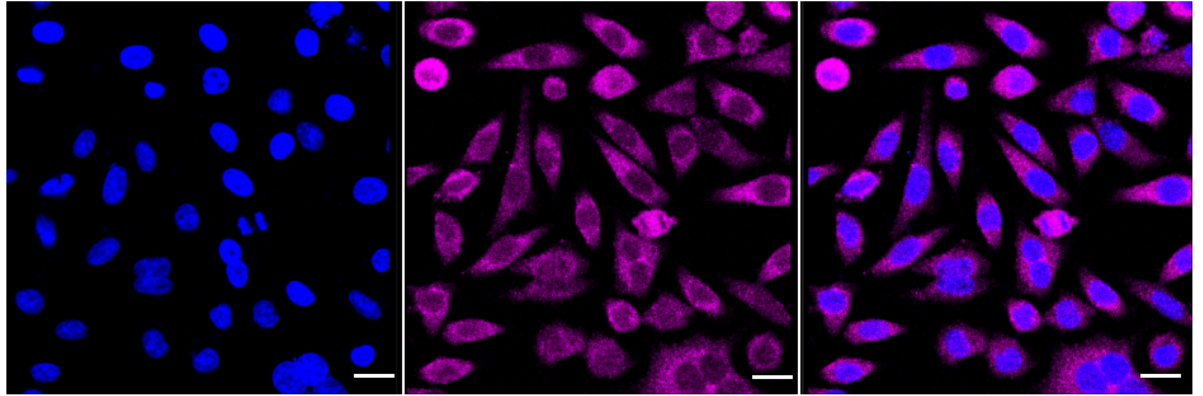
Western Blotting (WB): 1:1,000-1:20,000 Flow Cytometry (FCM): 1:2,000
Immunocytochemistry (IC): 1:1,000

Protocols

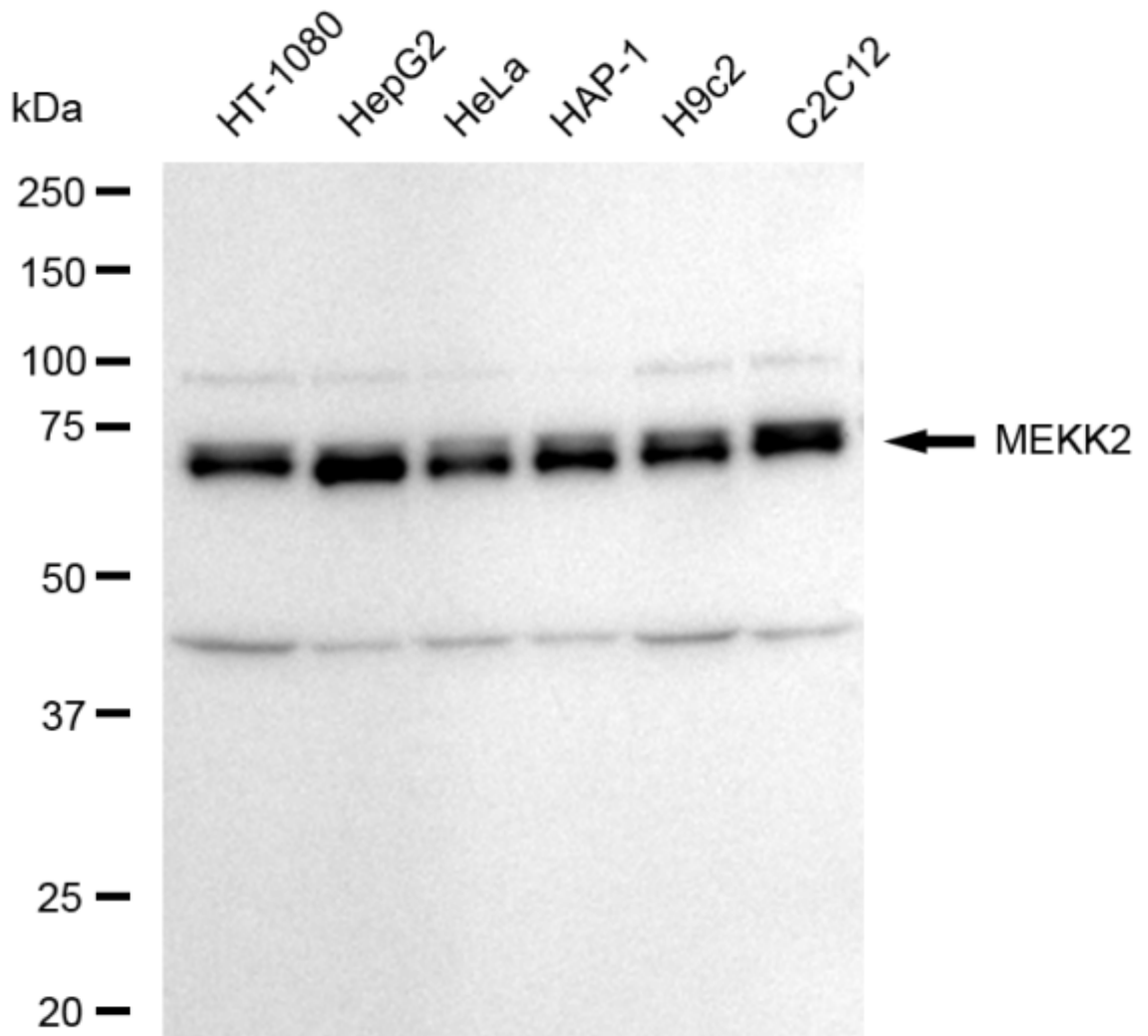
For general and specific antibody protocols please visit our website. Read all instructions before using this product.



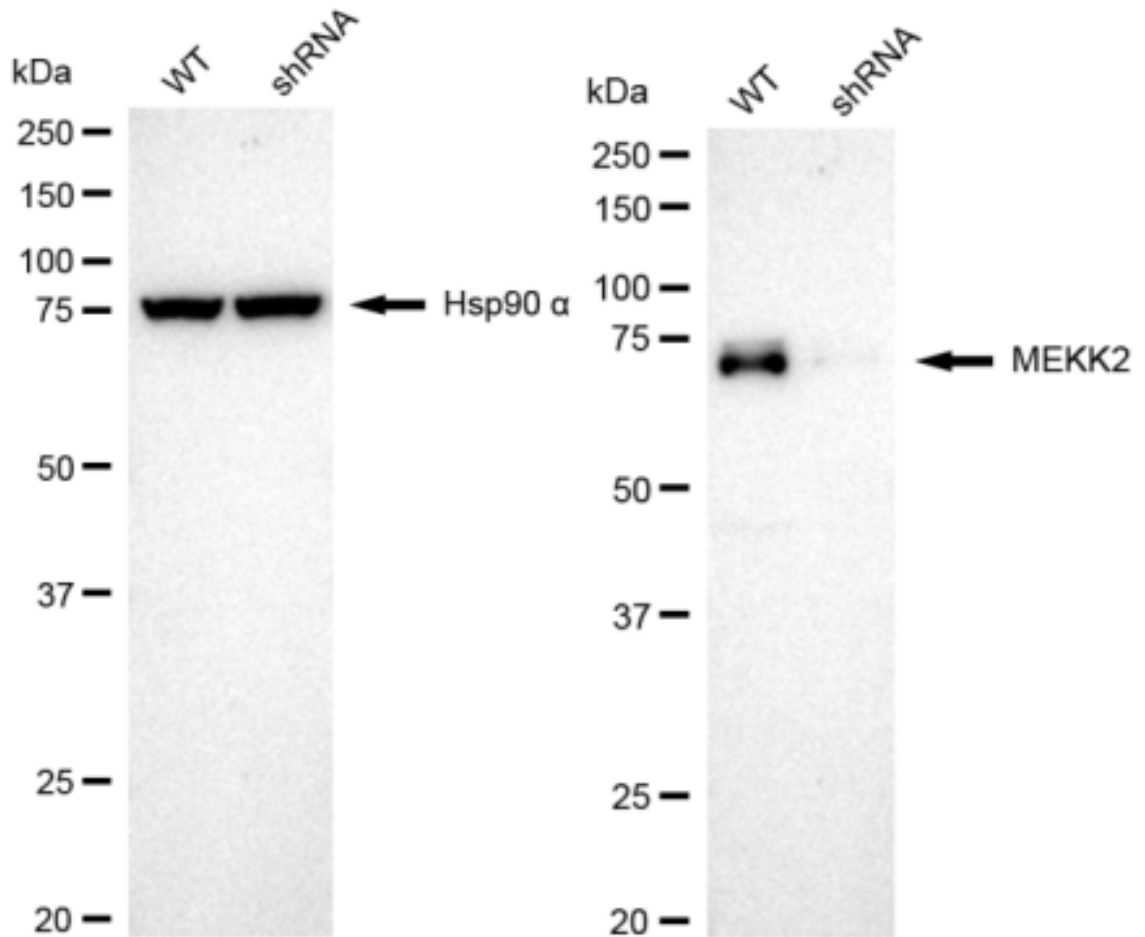
Flow cytometric analysis of MEKK2 expression in HepG2 cells using MEKK2 antibody 1:2,000. Green, isotype control; red, MEKK2.



Immunocytochemical staining of HeLa cells with anti-MEKK2 antibody 1:1,000. Nuclei were stained blue with DAPI; MEKK2 was stained magenta with Alexa Fluor® 647. Images were taken using Leica stellaris 5. Protein abundance based on laser Intensity and smart gain: Medium. Scale bar: 20 μ m.



Western blotting analysis using anti-MEKK2 antibody 1:20,000 and HRP-conjugated goat anti-rabbit secondary antibody 1:20,000 respectively. Image was developed using FeQ™ ECL Substrate Kit .



Western blotting analysis using anti-MEKK2 antibody 1:20,000 and HRP-conjugated goat anti-rabbit secondary antibody 1:20,000 respectively. Image was developed using NaQ™ ECL Substrate Kit .