



SunLong Biotech Co.,LTD
Tel: 0086-571- 56623320 Fax:0086-571- 56623318
E-mail:sales@sunlongbiotech.com
www.sunlongbiotech.com

[KD-Validated] Anti-MAP2K3 Rabbit Monoclonal Antibody

Cat No.: KD-10572

Aliases:

MAP2K3; Mitogen-Activated Protein Kinase Kinase 3; MEK3; MKK3; Stress-Activated Protein Kinase Kinase 2; MAP Kinase Kinase 3; MAPK/ERK Kinase 3; MAPKK3; SAPKK2; PRKMK3; Dual Specificity Mitogen-Activated Protein Kinase Kinase 3; SAPK Kinase 2; EC 2.7.12.2; SAPKK-2; MAPKK 3; MEK 3; Dual Specificity Mitogen Activated Protein Kinase Kinase 3; SKK2

Background:

UniProt Entry: [P46734](#);NCBI Gene Entry: [5606](#)

Application Information

Molecular Weight: Predicted, 39 kDa, observed, 36 kDa Clonality: Rabbit monoclonal antibody Clone ID: 23GB2420 Species Reactivity: Human, Mouse, Rat Applications Tested: Western Blotting (WB), Flow Cytometry (FCM), Immunocytochemistry (IC)

Immunogen

A synthesized peptide derived from human MEK3

Isotype

Rabbit IgG

Storage Buffer

Supplied in PBS (pH 7.4) containing 50% glycerol, and 0.02% sodium azide.

Storage

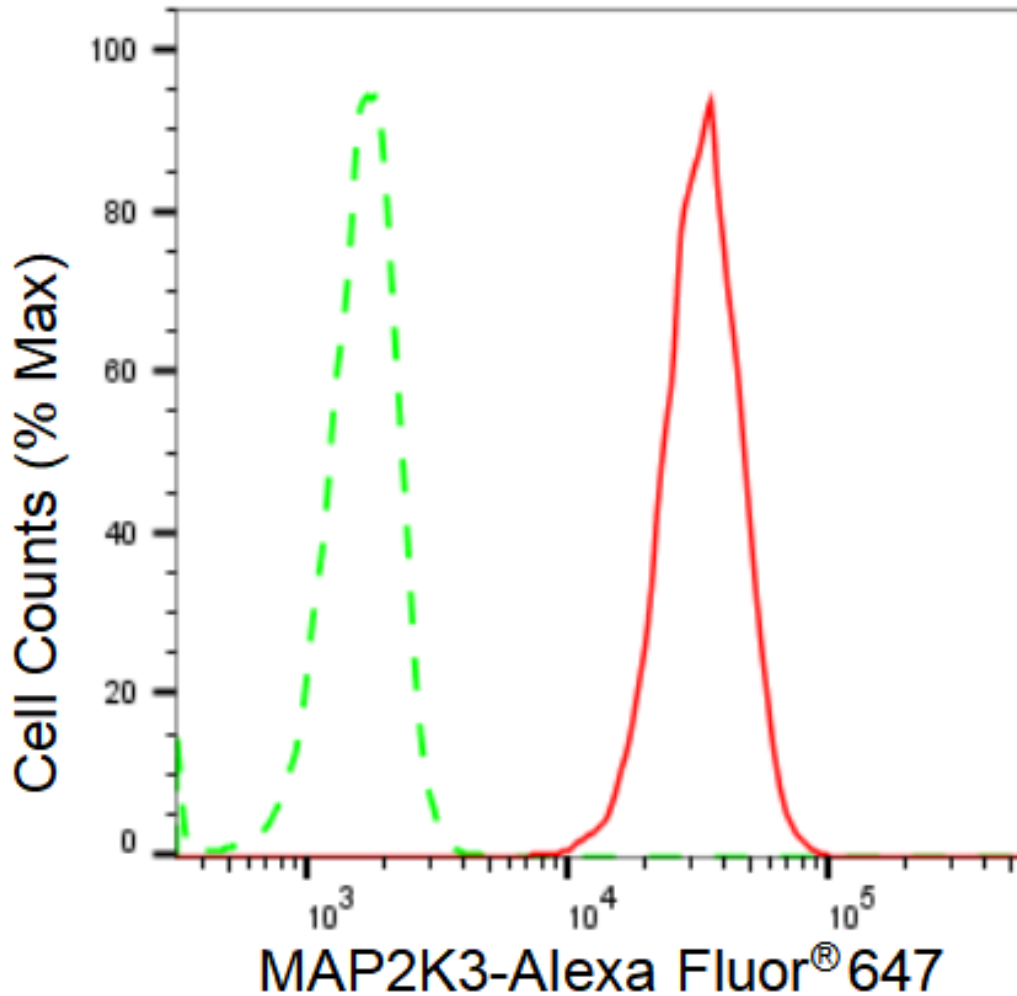
Store at -20 °C for one year.

Recommended Dilutions

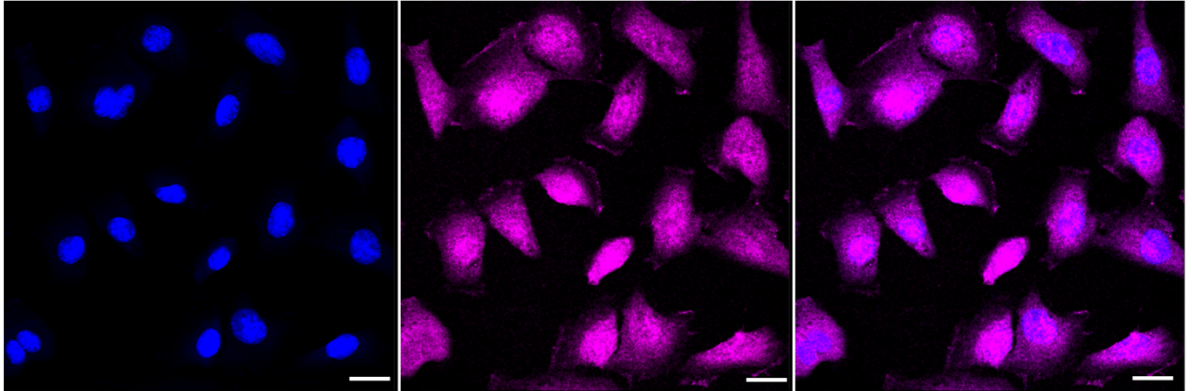
Western Blotting (WB): 1:1,000-1:5,000 Flow Cytometry (FCM): 1:2,000
Immunocytochemistry (IC): 1:1,000

Protocols

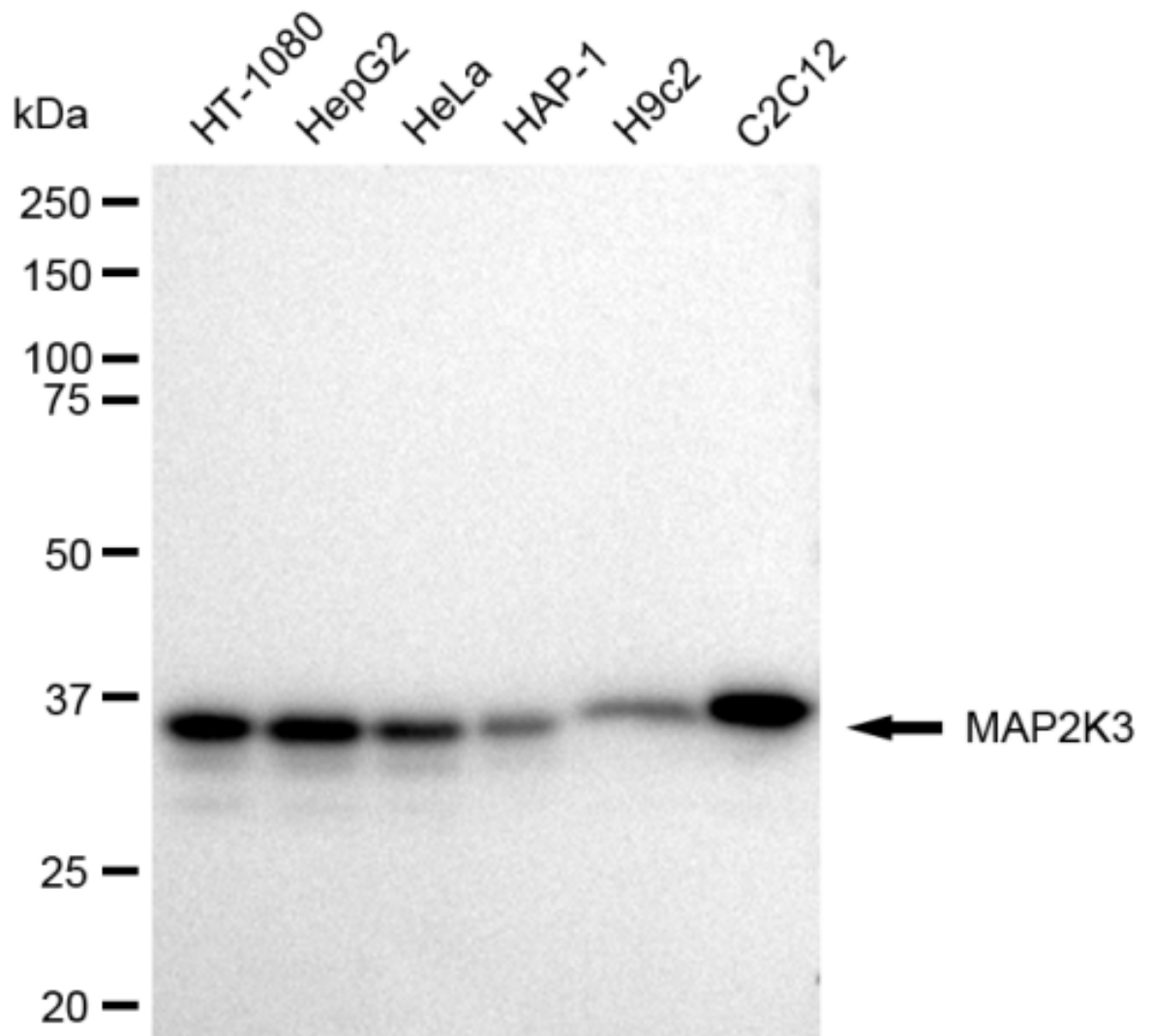
For general and specific antibody protocols please visit our website. Read all instructions before using this product.



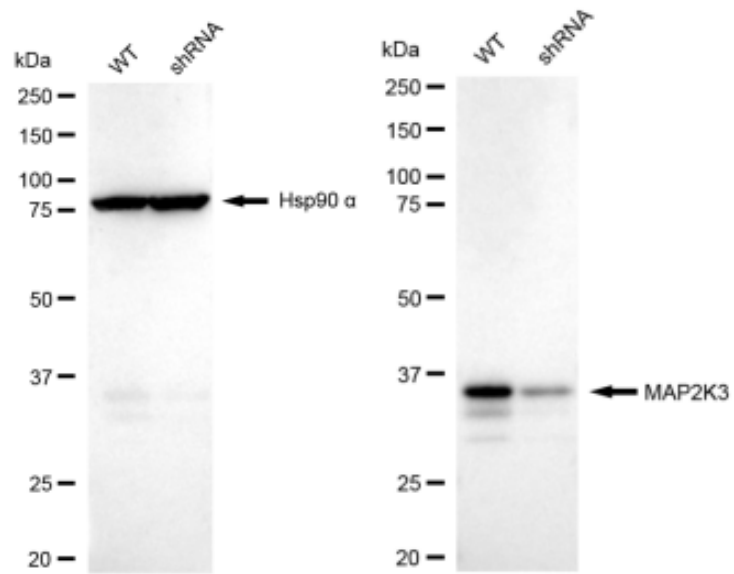
Flow cytometric analysis of MAP2K3 expression in C2C12 cells using MAP2K3 antibody 1:2,000. Green, isotype control; red, MAP2K3.



Immunocytochemical staining of C2C12 cells with MAP2K3 antibody 1:1,000. Nuclei were stained blue with DAPI; MAP2K3 was stained magenta with Alexa Fluor® 647. Images were taken using Leica stellaris 5. Protein abundance based on laser Intensity and smart gain: Medium. Scale bar: 20 μm .



Western blotting analysis using anti-MAP2K3 antibody 1:5,000 and HRP-conjugated goat anti-rabbit secondary antibody 1:20,000 respectively. Image was developed using FeQ™ ECL Substrate Kit .



Western blotting analysis using anti-MAP2K3 antibody 1:5,000 and HRP-conjugated goat anti-rabbit secondary antibody 1:20,000 respectively. Image was developed using FeQ™ ECL Substrate Kit .