



SunLong Biotech Co.,LTD
Tel: 0086-571- 56623320 Fax:0086-571- 56623318
E-mail:sales@sunlongbiotech.com
www.sunlongbiotech.com

[KD-Validated] Anti-Phospho-MEK1 (T292) Rabbit Monoclonal Antibody

Cat No.: KD-10571

Aliases:

Mitogen-Activated Protein Kinase Kinase 1; MEK1; Dual Specificity Mitogen-Activated Protein Kinase Kinase 1; MAPK/ERK Kinase 1; MAPKK1; PRKMK1; MKK1; ERK Activator Kinase 1; MAP Kinase Kinase 1; EC 2.7.12.2; MAPKK 1; MEK 1; Protein Kinase, Mitogen-Activated, Kinase 1 (MAP Kinase Kinase 1); CFC3; MEL

Background:

UniProt Entry: [Q02750](#);NCBI Gene Entry: [5604](#)

Application Information

Molecular Weight: Predicted, 43 kDa, observed, 45 kDa Clonality: Rabbit monoclonal antibody Clone ID: 24GB305 Species Reactivity: Human, Mouse, Rat Applications Tested: Western Blotting (WB), Flow Cytometry (FCM), Immunocytochemistry (IC)

Immunogen

A synthesized peptide derived from human MEK1

Isotype

Rabbit IgG

Storage Buffer

Supplied in PBS (pH 7.4) containing 50% glycerol, and 0.02% sodium azide.

Storage

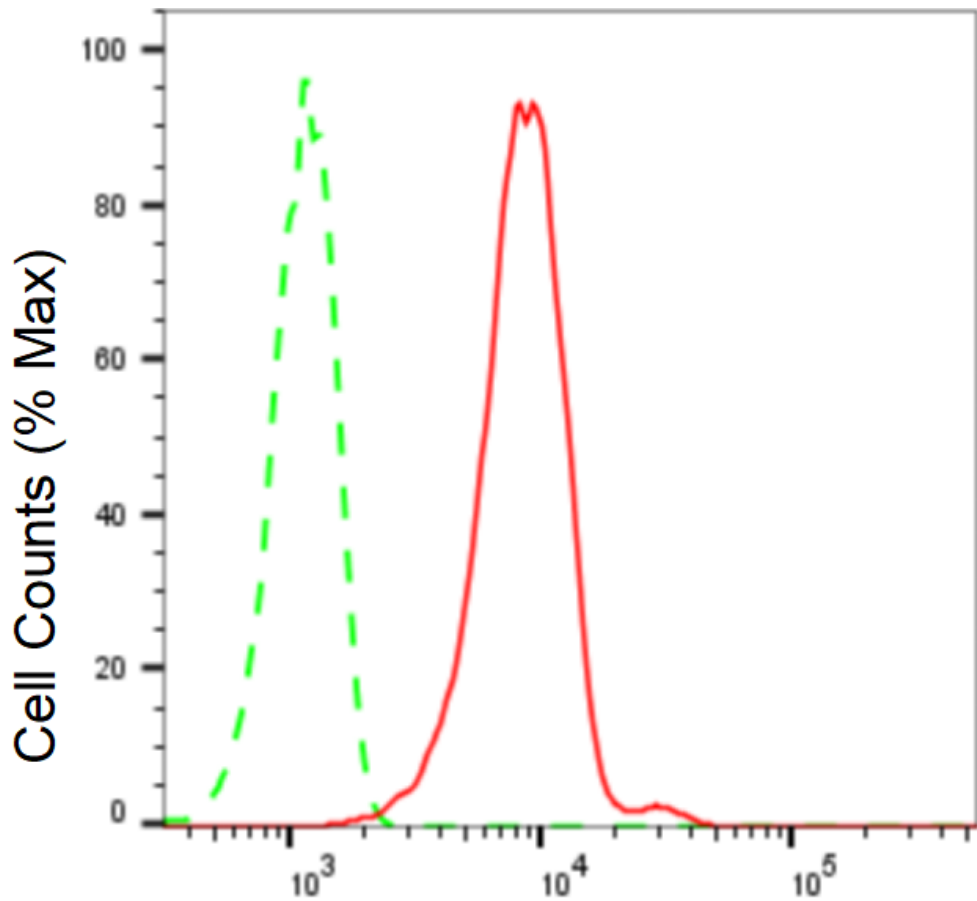
Store at -20 °C for one year.

Recommended Dilutions

Western Blotting (WB): 1:1,000-1:5,000 Flow Cytometry (FCM): 1:2,000
Immunocytochemistry (IC): 1:1,000

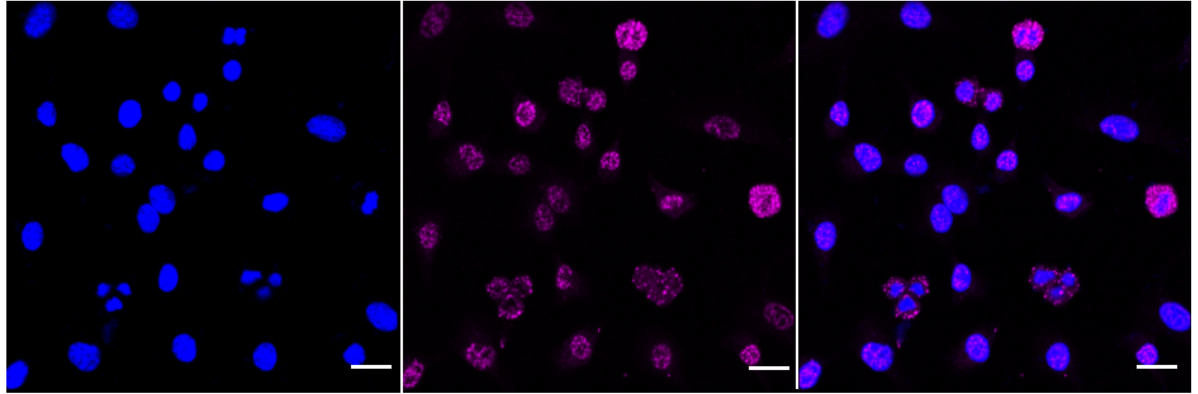
Protocols

For general and specific antibody protocols please visit our website. Read all instructions before using this product.

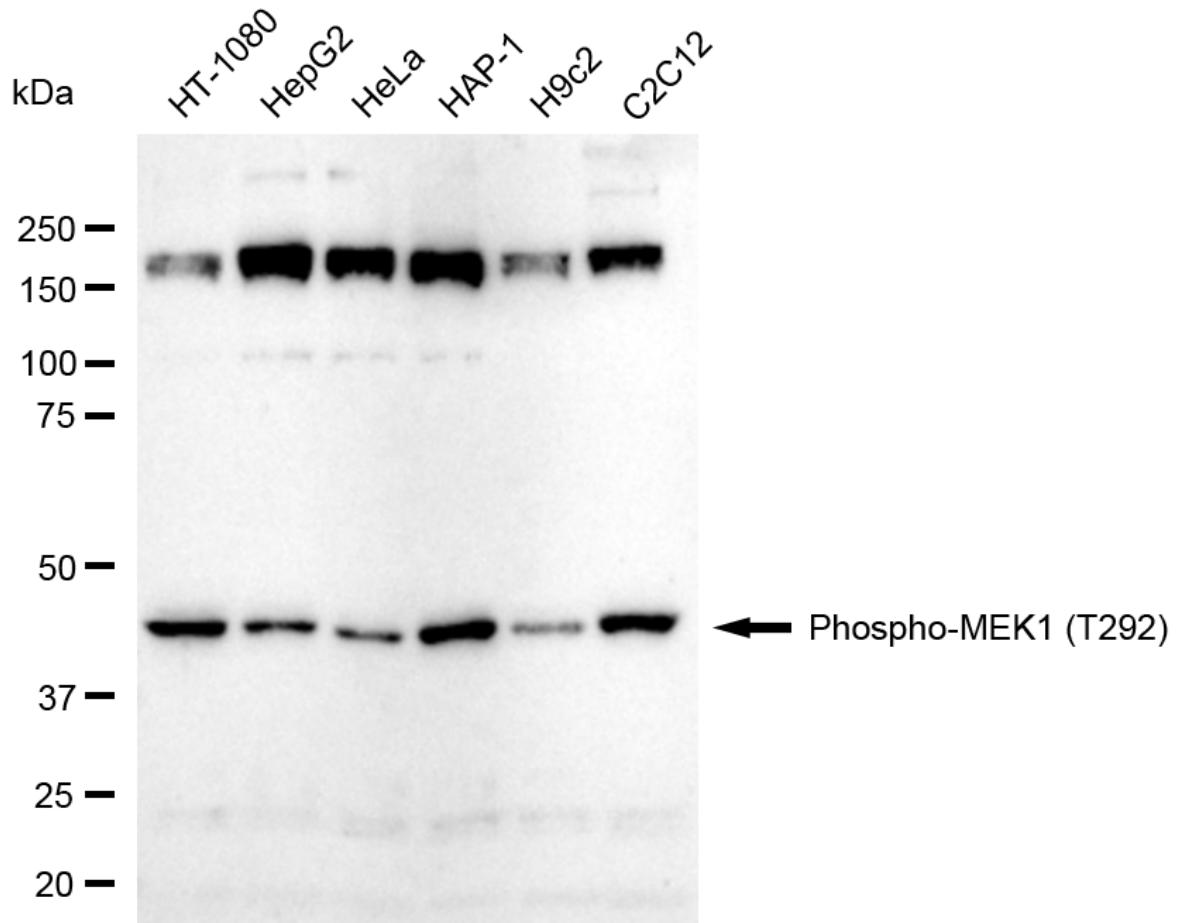


Phospho-MEK1 (T292)-Alexa Fluor[®] 647

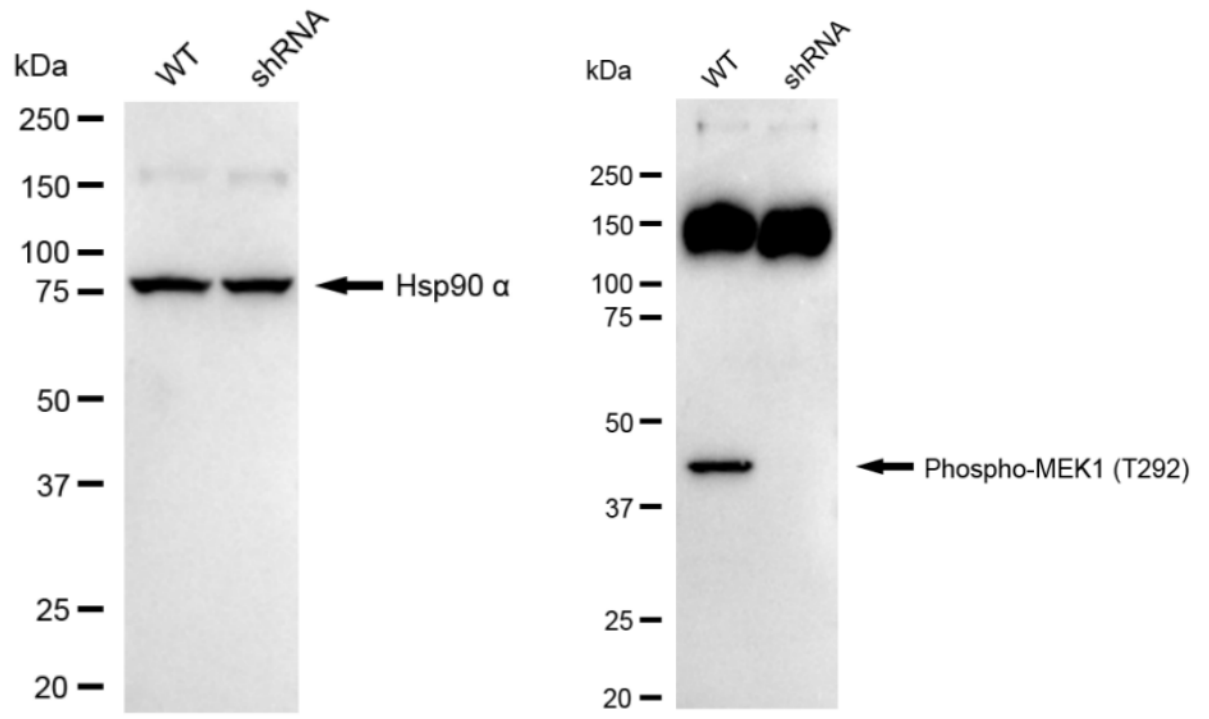
Flow cytometric analysis of Phospho-MEK1 (T292) expression in C2C12 cells using Phospho-MEK1 (T292) antibody 1:2,000. Green, isotype control; red, Phospho-MEK1 (T292).



Immunocytochemical staining of C2C12 cells with anti-Phospho-MEK1 (T292) antibody 1:1,000. Nuclei were stained blue with DAPI; Phospho-MEK1 (T292) was stained magenta with Alexa Fluor® 647. Images were taken using Leica stellaris 5. Protein abundance based on laser Intensity and smart gain: High. Scale bar: 20 μ m.



Western blotting analysis using anti-Phospho-MEK1 (T292) antibody 1:5,000 and HRP-conjugated goat anti-rabbit secondary antibody 1:20,000 respectively. Image was developed using FeQ™ ECL Substrate Kit .



Western blotting analysis using anti-Phospho-MEK1 (T292) antibody 1:5,000 and HRP-conjugated goat anti-rabbit secondary antibody 1:20,000 respectively. Image was developed using NaQ™ ECL Substrate Kit .